

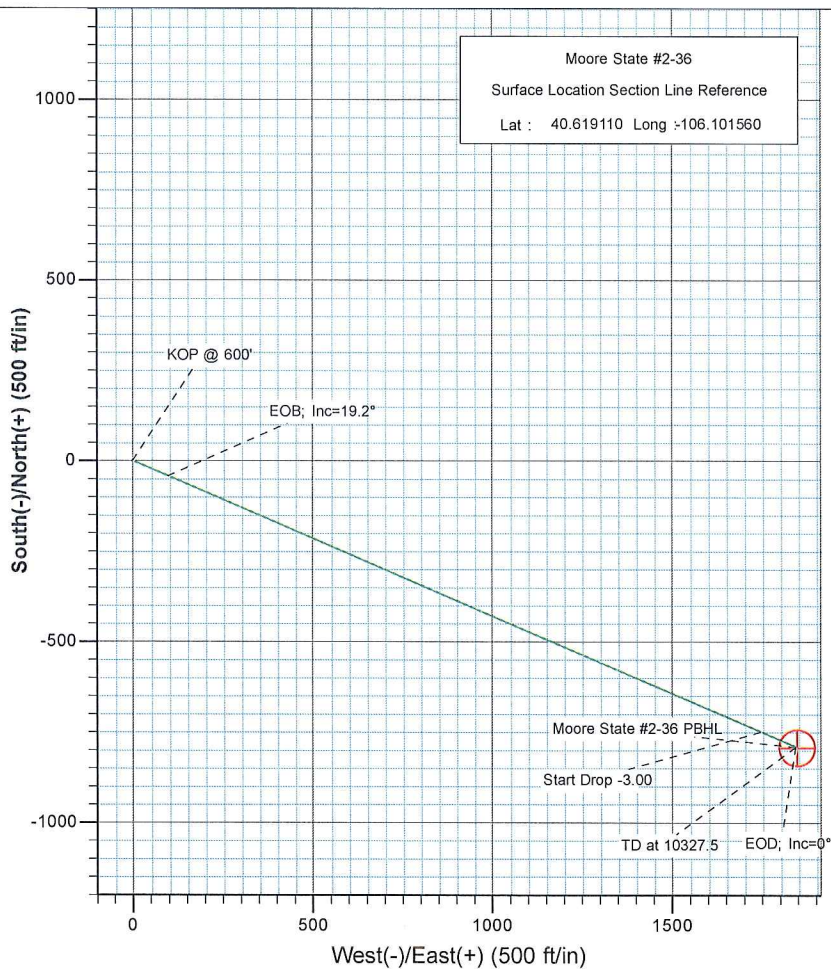
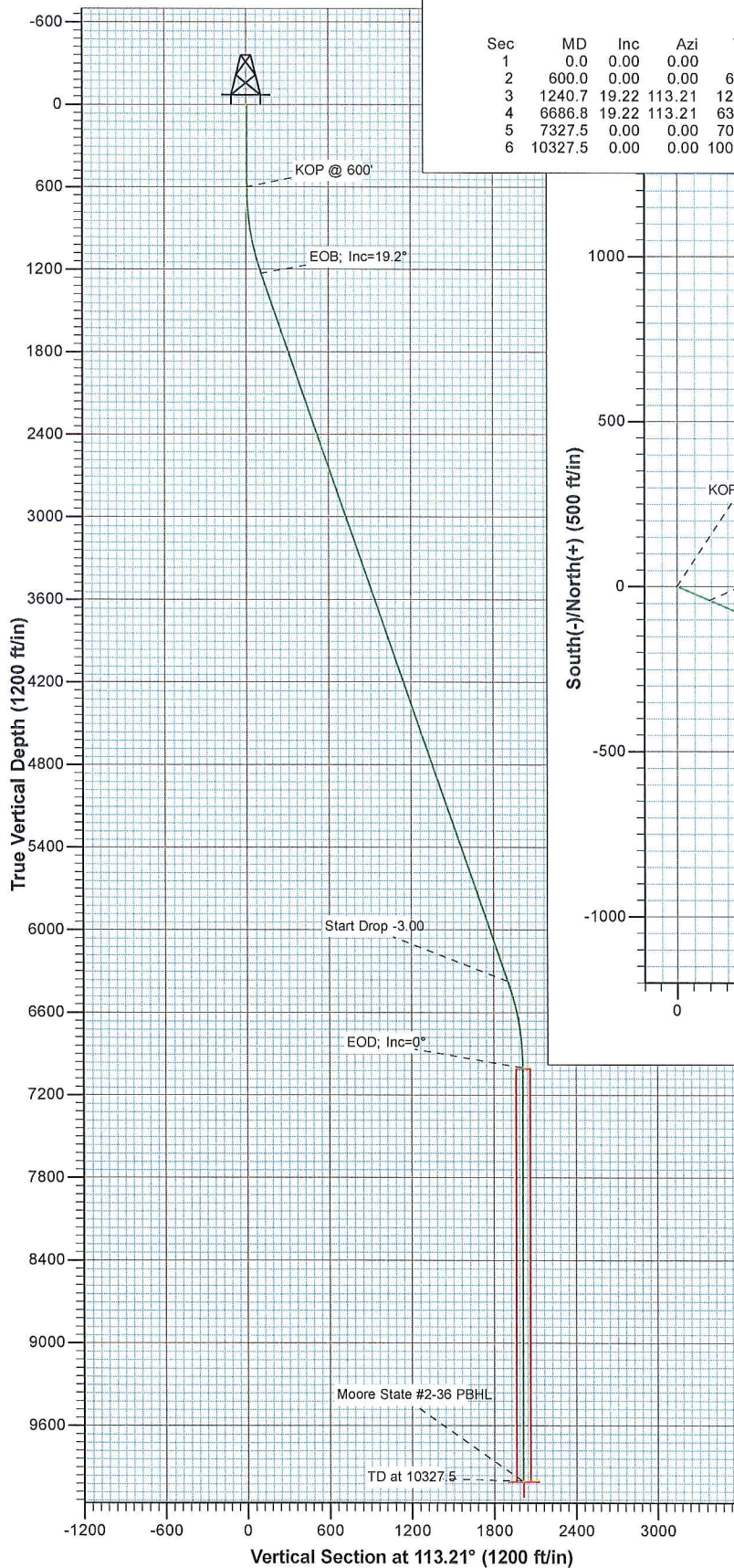
BONANZA CREEK ENERGY COMPANY

Project: Jackson County, CO
 Site: NWSW Sec 36-T8N-R78W
 Well: Moore State #2-36
 Wellbore: DD
 Plan: Plan #1



SECTION DETAILS

Sec	MD	Inc	Azi	TVD	+N/-S	+E/-W	Dleg	TFace	VSect	Target
1	0.0	0.00	0.00	0.0	0.0	0.0	0.00	0.00	0.0	
2	600.0	0.00	0.00	600.0	0.0	0.0	0.00	0.00	0.0	
3	1240.7	19.22	113.21	1228.7	-42.0	97.8	3.00	113.21	106.5	
4	6866.8	19.22	113.21	6371.3	-748.5	1745.6	0.00	0.00	1899.3	
5	7327.5	0.00	0.00	7000.0	-790.5	1843.4	3.00	180.00	2005.7	
6	10327.5	0.00	0.00	10000.0	-790.5	1843.4	0.00	0.00	2005.7	Moore State #2-36 PBHL



Azimuths to True North
 Magnetic North: 9.68°
 Magnetic Field
 Strength: 53195.9nT
 Dip Angle: 67.04°
 Date: 6/7/2010
 Model: IGRF200510

Plan #1
 Moore State #2-36

WELL @ 8508.0ft (Original Well Elev)
 North American Datum 1983
 Well Moore State #2-36, True North

Type	Target	Azimuth	Origin	Type	N/S	E/W	From	TVD
TD	No Target (Freehand)	113.21	Slot		0.0	0.0		0.0
Name	TVD	+N/-S	+E/-W	Latitude	Longitude			
Moore State #2-36 PBHL	10000.0	-790.5	1843.4	40.616940	-106.094920			

Cathedral Energy Services

Planning Report

Database:	EDM 5000.1 US Multi Users DB	Local Co-ordinate Reference:	Well Moore State #2-36
Company:	Bonanza Creek Energy Operating Company, LLC	TVD Reference:	WELL @ 8508.0ft (Original Well Elev)
Project:	Jackson County, CO	MD Reference:	WELL @ 8508.0ft (Original Well Elev)
Site:	NWSW Sec 36-T8N-R78W	North Reference:	True
Well:	Moore State #2-36	Survey Calculation Method:	Minimum Curvature
Wellbore:	DD		
Design:	Plan #1		

Project	Jackson County, CO		
Map System:	US State Plane 1983	System Datum:	Mean Sea Level
Geo Datum:	North American Datum 1983		
Map Zone:	Colorado Northern Zone		

Site	NWSW Sec 36-T8N-R78W				
Site Position:		Northing:	1,468,952.98 ft	Latitude:	40.619110
From:	Lat/Long	Easting:	2,833,007.77 ft	Longitude:	-106.101560
Position Uncertainty:	0.0 ft	Slot Radius:	0.000 in	Grid Convergence:	-0.39 °

Well	Moore State #2-36					
Well Position	+N/-S	0.0 ft	Northing:	1,468,952.97 ft	Latitude:	40.619110
	+E/-W	0.0 ft	Easting:	2,833,007.77 ft	Longitude:	-106.101560
Position Uncertainty		0.0 ft	Wellhead Elevation:	ft	Ground Level:	8,498.0 ft

Wellbore	DD				
Magnetics	Model Name	Sample Date	Declination (°)	Dip Angle (°)	Field Strength (nT)
	IGRF200510	6/7/2010	9.68	67.04	53,196

Design	Plan #1			
Audit Notes:				
Version:	Phase:	PLAN	Tie On Depth:	0.0
Vertical Section:	Depth From (TVD) (ft)	+N/-S (ft)	+E/-W (ft)	Direction (°)
	0.0	0.0	0.0	113.21

Plan Sections										
Measured Depth (ft)	Inclination (°)	Azimuth (°)	Vertical Depth (ft)	+N/-S (ft)	+E/-W (ft)	Dogleg Rate (°/100ft)	Build Rate (°/100ft)	Turn Rate (°/100ft)	TFO (°)	Target
0.0	0.00	0.00	0.0	0.0	0.0	0.00	0.00	0.00	0.00	
600.0	0.00	0.00	600.0	0.0	0.0	0.00	0.00	0.00	0.00	
1,240.7	19.22	113.21	1,228.7	-42.0	97.8	3.00	3.00	0.00	113.21	
6,686.8	19.22	113.21	6,371.3	-748.5	1,745.6	0.00	0.00	0.00	0.00	
7,327.5	0.00	0.00	7,000.0	-790.5	1,843.4	3.00	-3.00	0.00	180.00	
10,327.5	0.00	0.00	10,000.0	-790.5	1,843.4	0.00	0.00	0.00	0.00	Moore State #2-36 PE

Cathedral Energy Services

Planning Report

Database:	EDM 5000.1 US Multi Users DB	Local Co-ordinate Reference:	Well Moore State #2-36
Company:	Bonanza Creek Energy Operating Company, LLC	TVD Reference:	WELL @ 8508.0ft (Original Well Elev)
Project:	Jackson County, CO	MD Reference:	WELL @ 8508.0ft (Original Well Elev)
Site:	NWSW Sec 36-T8N-R78W	North Reference:	True
Well:	Moore State #2-36	Survey Calculation Method:	Minimum Curvature
Wellbore:	DD		
Design:	Plan #1		

Planned Survey

Measured Depth (ft)	Inclination (°)	Azimuth (°)	Vertical Depth (ft)	+N/-S (ft)	+E/-W (ft)	Vertical Section (ft)	Dogleg Rate (°/100ft)	Build Rate (°/100ft)	Comments / Formations
0.0	0.00	0.00	0.0	0.0	0.0	0.0	0.00	0.00	
100.0	0.00	0.00	100.0	0.0	0.0	0.0	0.00	0.00	
200.0	0.00	0.00	200.0	0.0	0.0	0.0	0.00	0.00	
300.0	0.00	0.00	300.0	0.0	0.0	0.0	0.00	0.00	
400.0	0.00	0.00	400.0	0.0	0.0	0.0	0.00	0.00	
500.0	0.00	0.00	500.0	0.0	0.0	0.0	0.00	0.00	
600.0	0.00	0.00	600.0	0.0	0.0	0.0	0.00	0.00	KOP @ 600'
700.0	3.00	113.21	700.0	-1.0	2.4	2.6	3.00	3.00	
800.0	6.00	113.21	799.6	-4.1	9.6	10.5	3.00	3.00	
900.0	9.00	113.21	898.8	-9.3	21.6	23.5	3.00	3.00	
1,000.0	12.00	113.21	997.1	-16.4	38.4	41.7	3.00	3.00	
1,100.0	15.00	113.21	1,094.3	-25.6	59.8	65.1	3.00	3.00	
1,200.0	18.00	113.21	1,190.2	-36.8	85.9	93.5	3.00	3.00	
1,240.7	19.22	113.21	1,228.7	-42.0	97.8	106.5	3.00	3.00	EOB; Inc=19.2°
1,300.0	19.22	113.21	1,284.7	-49.7	115.8	126.0	0.00	0.00	
1,400.0	19.22	113.21	1,379.2	-62.6	146.0	158.9	0.00	0.00	
1,500.0	19.22	113.21	1,473.6	-75.6	176.3	191.8	0.00	0.00	
1,600.0	19.22	113.21	1,568.0	-88.6	206.6	224.7	0.00	0.00	
1,700.0	19.22	113.21	1,662.4	-101.5	236.8	257.7	0.00	0.00	
1,800.0	19.22	113.21	1,756.9	-114.5	267.1	290.6	0.00	0.00	
1,900.0	19.22	113.21	1,851.3	-127.5	297.3	323.5	0.00	0.00	
2,000.0	19.22	113.21	1,945.7	-140.5	327.6	356.4	0.00	0.00	
2,100.0	19.22	113.21	2,040.2	-153.4	357.8	389.3	0.00	0.00	
2,200.0	19.22	113.21	2,134.6	-166.4	388.1	422.3	0.00	0.00	
2,300.0	19.22	113.21	2,229.0	-179.4	418.3	455.2	0.00	0.00	
2,400.0	19.22	113.21	2,323.4	-192.4	448.6	488.1	0.00	0.00	
2,500.0	19.22	113.21	2,417.9	-205.3	478.8	521.0	0.00	0.00	
2,600.0	19.22	113.21	2,512.3	-218.3	509.1	553.9	0.00	0.00	
2,700.0	19.22	113.21	2,606.7	-231.3	539.4	586.9	0.00	0.00	
2,800.0	19.22	113.21	2,701.1	-244.3	569.6	619.8	0.00	0.00	
2,900.0	19.22	113.21	2,795.6	-257.2	599.9	652.7	0.00	0.00	
3,000.0	19.22	113.21	2,890.0	-270.2	630.1	685.6	0.00	0.00	
3,100.0	19.22	113.21	2,984.4	-283.2	660.4	718.5	0.00	0.00	
3,200.0	19.22	113.21	3,078.8	-296.2	690.6	751.5	0.00	0.00	
3,300.0	19.22	113.21	3,173.3	-309.1	720.9	784.4	0.00	0.00	
3,400.0	19.22	113.21	3,267.7	-322.1	751.1	817.3	0.00	0.00	
3,500.0	19.22	113.21	3,362.1	-335.1	781.4	850.2	0.00	0.00	
3,600.0	19.22	113.21	3,456.5	-348.1	811.7	883.1	0.00	0.00	
3,700.0	19.22	113.21	3,551.0	-361.0	841.9	916.1	0.00	0.00	
3,800.0	19.22	113.21	3,645.4	-374.0	872.2	949.0	0.00	0.00	
3,900.0	19.22	113.21	3,739.8	-387.0	902.4	981.9	0.00	0.00	
4,000.0	19.22	113.21	3,834.3	-400.0	932.7	1,014.8	0.00	0.00	
4,100.0	19.22	113.21	3,928.7	-412.9	962.9	1,047.7	0.00	0.00	
4,200.0	19.22	113.21	4,023.1	-425.9	993.2	1,080.6	0.00	0.00	
4,300.0	19.22	113.21	4,117.5	-438.9	1,023.4	1,113.6	0.00	0.00	
4,400.0	19.22	113.21	4,212.0	-451.9	1,053.7	1,146.5	0.00	0.00	
4,500.0	19.22	113.21	4,306.4	-464.8	1,083.9	1,179.4	0.00	0.00	
4,600.0	19.22	113.21	4,400.8	-477.8	1,114.2	1,212.3	0.00	0.00	
4,700.0	19.22	113.21	4,495.2	-490.8	1,144.5	1,245.2	0.00	0.00	
4,800.0	19.22	113.21	4,589.7	-503.7	1,174.7	1,278.2	0.00	0.00	
4,900.0	19.22	113.21	4,684.1	-516.7	1,205.0	1,311.1	0.00	0.00	
5,000.0	19.22	113.21	4,778.5	-529.7	1,235.2	1,344.0	0.00	0.00	

Cathedral Energy Services

Planning Report

Database:	EDM 5000.1 US Multi Users DB	Local Co-ordinate Reference:	Well Moore State #2-36
Company:	Bonanza Creek Energy Operating Company, LLC	TVD Reference:	WELL @ 8508.0ft (Original Well Elev)
Project:	Jackson County, CO	MD Reference:	WELL @ 8508.0ft (Original Well Elev)
Site:	NWSW Sec 36-T8N-R78W	North Reference:	True
Well:	Moore State #2-36	Survey Calculation Method:	Minimum Curvature
Wellbore:	DD		
Design:	Plan #1		

Planned Survey

Measured Depth (ft)	Inclination (°)	Azimuth (°)	Vertical Depth (ft)	+N/-S (ft)	+E/-W (ft)	Vertical Section (ft)	Dogleg Rate (°/100ft)	Build Rate (°/100ft)	Comments / Formations
5,100.0	19.22	113.21	4,872.9	-542.7	1,265.5	1,376.9	0.00	0.00	
5,200.0	19.22	113.21	4,967.4	-555.6	1,295.7	1,409.8	0.00	0.00	
5,300.0	19.22	113.21	5,061.8	-568.6	1,326.0	1,442.8	0.00	0.00	
5,400.0	19.22	113.21	5,156.2	-581.6	1,356.2	1,475.7	0.00	0.00	
5,500.0	19.22	113.21	5,250.6	-594.6	1,386.5	1,508.6	0.00	0.00	
5,600.0	19.22	113.21	5,345.1	-607.5	1,416.8	1,541.5	0.00	0.00	
5,700.0	19.22	113.21	5,439.5	-620.5	1,447.0	1,574.4	0.00	0.00	
5,800.0	19.22	113.21	5,533.9	-633.5	1,477.3	1,607.4	0.00	0.00	
5,900.0	19.22	113.21	5,628.4	-646.5	1,507.5	1,640.3	0.00	0.00	
6,000.0	19.22	113.21	5,722.8	-659.4	1,537.8	1,673.2	0.00	0.00	
6,100.0	19.22	113.21	5,817.2	-672.4	1,568.0	1,706.1	0.00	0.00	
6,200.0	19.22	113.21	5,911.6	-685.4	1,598.3	1,739.0	0.00	0.00	
6,300.0	19.22	113.21	6,006.1	-698.4	1,628.5	1,772.0	0.00	0.00	
6,400.0	19.22	113.21	6,100.5	-711.3	1,658.8	1,804.9	0.00	0.00	
6,500.0	19.22	113.21	6,194.9	-724.3	1,689.0	1,837.8	0.00	0.00	
6,600.0	19.22	113.21	6,289.3	-737.3	1,719.3	1,870.7	0.00	0.00	
6,686.8	19.22	113.21	6,371.3	-748.5	1,745.6	1,899.3	0.00	0.00	Start Drop -3.00
6,700.0	18.82	113.21	6,383.8	-750.2	1,749.5	1,903.6	3.00	-3.00	
6,800.0	15.82	113.21	6,479.2	-762.0	1,776.9	1,933.4	3.00	-3.00	
6,900.0	12.82	113.21	6,576.1	-771.7	1,799.6	1,958.1	3.00	-3.00	
7,000.0	9.82	113.21	6,674.2	-779.5	1,817.7	1,977.7	3.00	-3.00	
7,100.0	6.82	113.21	6,773.1	-785.2	1,831.0	1,992.2	3.00	-3.00	
7,200.0	3.82	113.21	6,872.6	-788.8	1,839.5	2,001.5	3.00	-3.00	
7,300.0	0.82	113.21	6,972.5	-790.4	1,843.2	2,005.5	3.00	-3.00	
7,327.5	0.00	0.00	7,000.0	-790.5	1,843.4	2,005.7	3.00	-3.00	EOD; Inc=0°
7,400.0	0.00	0.00	7,072.5	-790.5	1,843.4	2,005.7	0.00	0.00	
7,500.0	0.00	0.00	7,172.5	-790.5	1,843.4	2,005.7	0.00	0.00	
7,600.0	0.00	0.00	7,272.5	-790.5	1,843.4	2,005.7	0.00	0.00	
7,700.0	0.00	0.00	7,372.5	-790.5	1,843.4	2,005.7	0.00	0.00	
7,800.0	0.00	0.00	7,472.5	-790.5	1,843.4	2,005.7	0.00	0.00	
7,900.0	0.00	0.00	7,572.5	-790.5	1,843.4	2,005.7	0.00	0.00	
8,000.0	0.00	0.00	7,672.5	-790.5	1,843.4	2,005.7	0.00	0.00	
8,100.0	0.00	0.00	7,772.5	-790.5	1,843.4	2,005.7	0.00	0.00	
8,200.0	0.00	0.00	7,872.5	-790.5	1,843.4	2,005.7	0.00	0.00	
8,300.0	0.00	0.00	7,972.5	-790.5	1,843.4	2,005.7	0.00	0.00	
8,400.0	0.00	0.00	8,072.5	-790.5	1,843.4	2,005.7	0.00	0.00	
8,500.0	0.00	0.00	8,172.5	-790.5	1,843.4	2,005.7	0.00	0.00	
8,600.0	0.00	0.00	8,272.5	-790.5	1,843.4	2,005.7	0.00	0.00	
8,700.0	0.00	0.00	8,372.5	-790.5	1,843.4	2,005.7	0.00	0.00	
8,800.0	0.00	0.00	8,472.5	-790.5	1,843.4	2,005.7	0.00	0.00	
8,900.0	0.00	0.00	8,572.5	-790.5	1,843.4	2,005.7	0.00	0.00	
9,000.0	0.00	0.00	8,672.5	-790.5	1,843.4	2,005.7	0.00	0.00	
9,100.0	0.00	0.00	8,772.5	-790.5	1,843.4	2,005.7	0.00	0.00	
9,200.0	0.00	0.00	8,872.5	-790.5	1,843.4	2,005.7	0.00	0.00	
9,300.0	0.00	0.00	8,972.5	-790.5	1,843.4	2,005.7	0.00	0.00	
9,400.0	0.00	0.00	9,072.5	-790.5	1,843.4	2,005.7	0.00	0.00	
9,500.0	0.00	0.00	9,172.5	-790.5	1,843.4	2,005.7	0.00	0.00	
9,600.0	0.00	0.00	9,272.5	-790.5	1,843.4	2,005.7	0.00	0.00	
9,700.0	0.00	0.00	9,372.5	-790.5	1,843.4	2,005.7	0.00	0.00	
9,800.0	0.00	0.00	9,472.5	-790.5	1,843.4	2,005.7	0.00	0.00	
9,900.0	0.00	0.00	9,572.5	-790.5	1,843.4	2,005.7	0.00	0.00	
10,000.0	0.00	0.00	9,672.5	-790.5	1,843.4	2,005.7	0.00	0.00	

Cathedral Energy Services

Planning Report

Database:	EDM 5000.1 US Multi Users DB	Local Co-ordinate Reference:	Well Moore State #2-36
Company:	Bonanza Creek Energy Operating Company, LLC	TVD Reference:	WELL @ 8508.0ft (Original Well Elev)
Project:	Jackson County, CO	MD Reference:	WELL @ 8508.0ft (Original Well Elev)
Site:	NWSW Sec 36-T8N-R78W	North Reference:	True
Well:	Moore State #2-36	Survey Calculation Method:	Minimum Curvature
Wellbore:	DD		
Design:	Plan #1		

Planned Survey

Measured Depth (ft)	Inclination (°)	Azimuth (°)	Vertical Depth (ft)	+N/-S (ft)	+E/-W (ft)	Vertical Section (ft)	Dogleg Rate (°/100ft)	Build Rate (°/100ft)	Comments / Formations
10,100.0	0.00	0.00	9,772.5	-790.5	1,843.4	2,005.7	0.00	0.00	
10,200.0	0.00	0.00	9,872.5	-790.5	1,843.4	2,005.7	0.00	0.00	
10,300.0	0.00	0.00	9,972.5	-790.5	1,843.4	2,005.7	0.00	0.00	
10,327.5	0.00	0.00	10,000.0	-790.5	1,843.4	2,005.7	0.00	0.00	TD at 10327.5 - Moore State #2-36 PBHL

Targets

Target Name	Dip Angle (°)	Dip Dir. (°)	TVD (ft)	+N/-S (ft)	+E/-W (ft)	Northing (ft)	Easting (ft)	Latitude	Longitude
- hit/miss target									
- Shape									
Moore State #2-36 PBHL	0.00	0.00	10,000.0	-790.5	1,843.4	1,468,149.99	2,834,845.76	40.616940	-106.094920
- plan hits target center									
- Circle (radius 50.0)									

Plan Annotations

Measured Depth (ft)	Vertical Depth (ft)	Local Coordinates		Comment
		+N/-S (ft)	+E/-W (ft)	
600.0	600.0	0.0	0.0	KOP @ 600'
1,240.7	1,228.7	-42.0	97.8	EOB; Inc=19.2°
6,686.8	6,371.3	-748.5	1,745.6	Start Drop -3.00
7,327.5	7,000.0	-790.5	1,843.4	EOD; Inc=0°
10,327.5	10,000.0	-790.5	1,843.4	TD at 10327.5