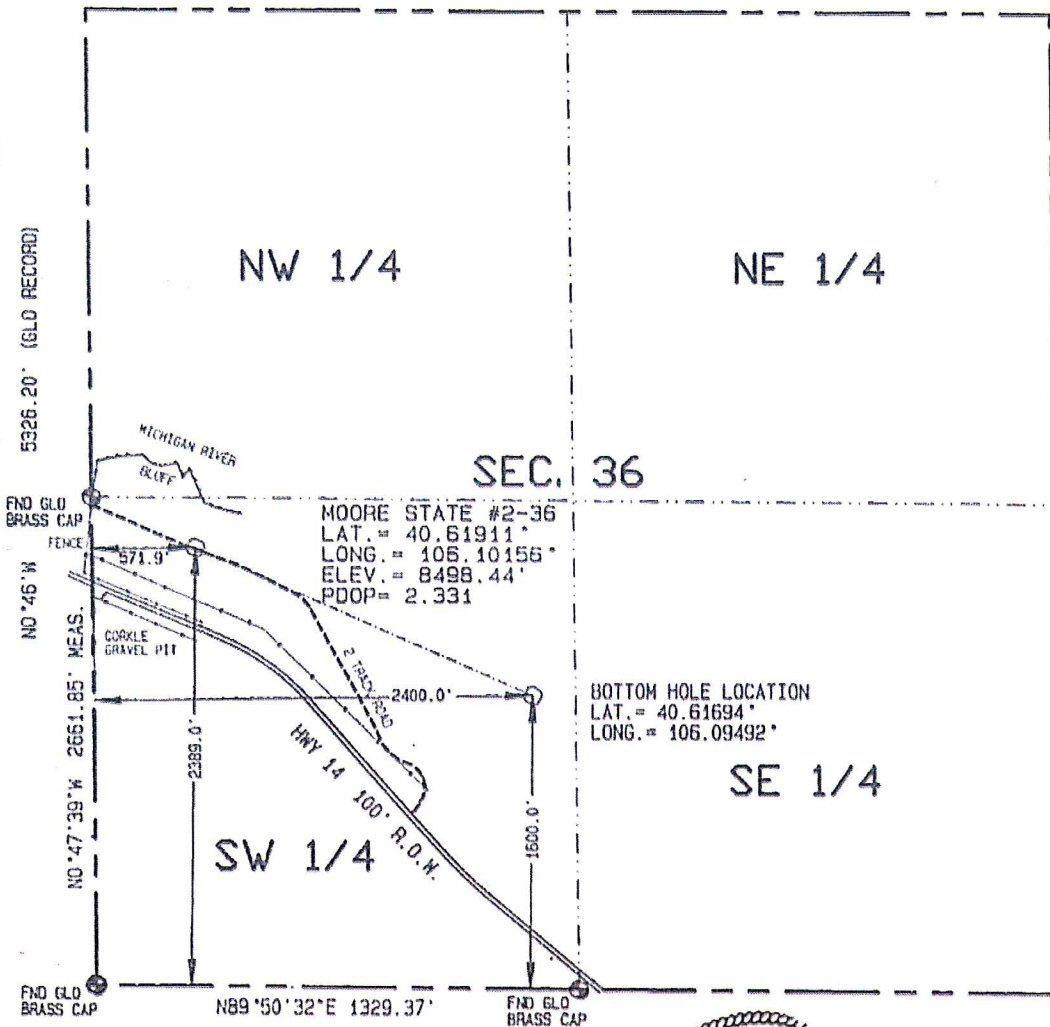


Contract Surveyors, Ltd. of Denver, Colorado has in accordance with a request from Steve Wolfe for Bonanza Creek Energy Operating Company, LLC, determined the location of MOORE STATE #2-36 to be 2389' FSL & 572' FWL Section 36, Township 8 North, Range 78 West of the 6th Principal Meridian, Jackson County, State of Colorado. The surface elevation at this point is 8498 feet above m.s.l. Improvements within 400' of location are: Overhead power line passes 263' to Southwest. Hwy 14 passes 388' to Southwest (R.O.W. fence 364'). The bluffs above the Michigan River are 244' Northeast.

BASIS OF BEARINGS IS  
THE WEST LINE OF THE  
SW 1/4 OF SEC. 36,  
T8N, R78W OF THE 6TH  
P.M. JACKSON COUNTY, CO.  
BEARS N00°47'39"E  
BETWEEN SET MONUMENTS  
AS DETERMINED BY GPS  
(NAD 83)

BASIS OF ELEVATION IS  
C.G.S. POINT Y 316  
BY DIFFERENTIAL GPS  
EL. = 8135.12'

BEARINGS AND DISTANCES  
SHOWN ARE FIELD MEASURED  
AND THE LOCATION DISTANCES  
ARE AT RIGHT ANGLES FROM  
THE NEAREST NORTH-SOUTH AND  
EAST-WEST SECTION LINES.



I HEREBY CERTIFY THAT THIS PLAT IS AN ACCURATE REPRESENTATION  
OF A CORRECT SURVEY SHOWING THE LOCATION OF SAID MOORE STATE #2-36.



1000 500 0 1000

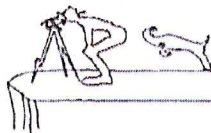


Scale 1" = 1000'

Dan R. Griggs PLS# 38018

**CONTRACT SURVEYORS, LTD.**  
COMPLETE SURVEYING AND GLOBAL POSITIONING

2133 SOUTH BELLAIRE STREET #14  
DENVER COLORADO 80222  
(303) 756-3695



DATE OF FIELD WORK

22, 27 APR. 2010

DATE OF DRAWING

19 MAY. 2010

MOORE STATE #2-36

NW 1/4, SW 1/4 SEC. 36, T8N, R78W

BONANZA CREEK ENERGY OPERATING COMPANY, LLC

CSL# 10104-07

JACKSON COUNTY, COLORADO