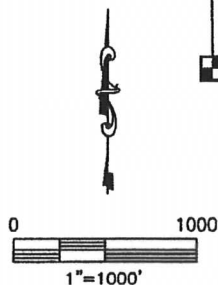
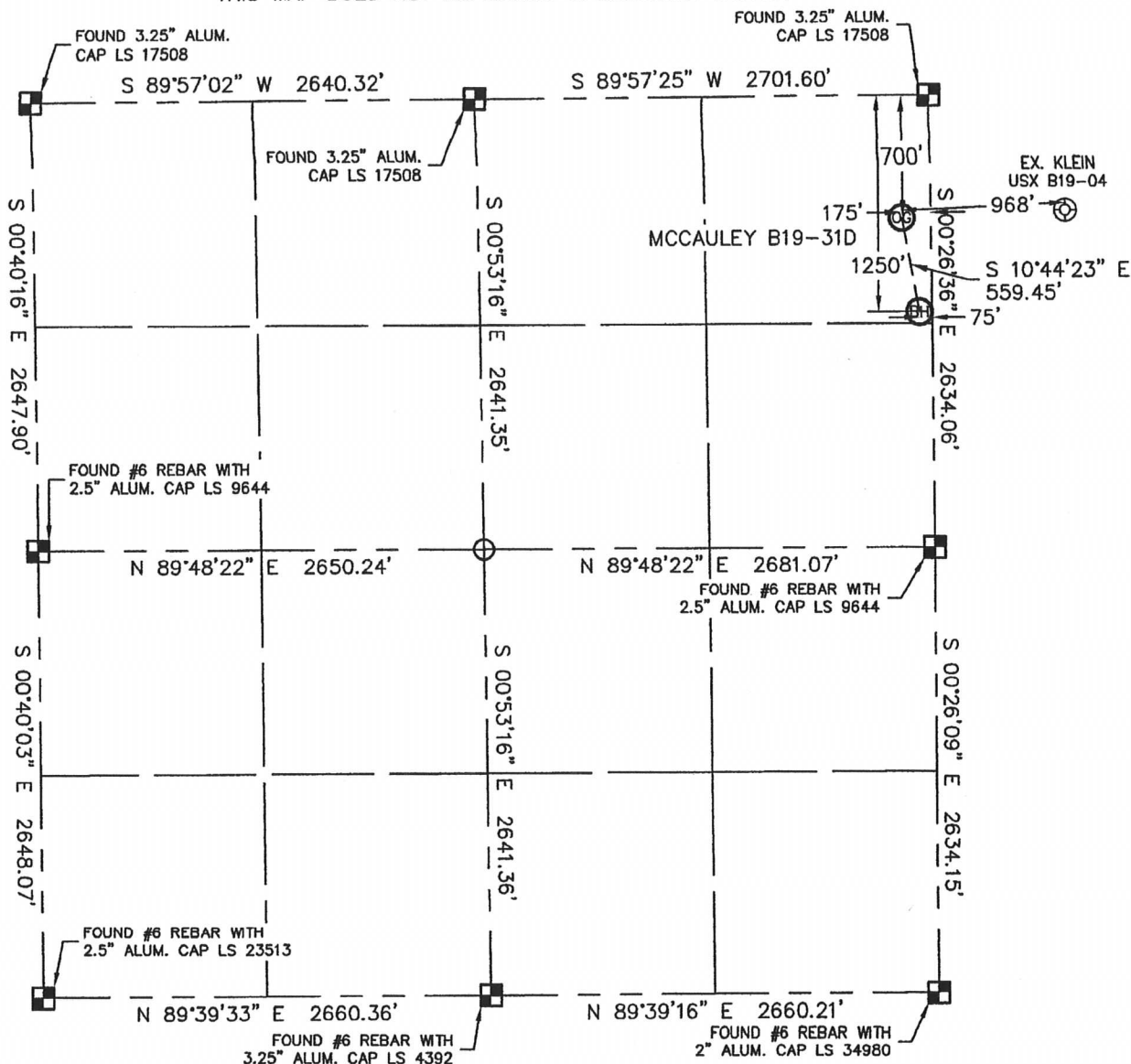


# WELL LOCATION CERTIFICATE

THIS MAP DOES NOT REPRESENT A BOUNDARY SURVEY

SECTION: 24  
TOWNSHIP: 5N  
RANGE: 65W



In accordance with a request from Matt Campbell with Noble Energy Inc., Lat40°, LLC has determined the surface location of the MCCAULEY B19-31D to be 700' from the NORTH line and 175' from the EAST line and the bottom hole to be 1250' from the NORTH line and 75' from the EAST line as measured at right angles from the section line of Section 24, Township 5 North, Range 65 West of the Sixth Principal Meridian, County of Weld, State of Colorado.

I hereby state that this Well Location Certificate was prepared by me, or under my direct supervision, that the fieldwork was completed on 8/11/10, for and on behalf of Noble Energy Inc.. That this is not a Land Survey Plat or an Improvement Survey Plat, and that it is not to be relied upon for establishment of fence, building, or other future improvement lines.

**NOTE:**

- 1) Bearings shown are Grid Bearings of the Colorado State Plane Coordinate System, North Zone, North American Datum 1983/2007. The lineal dimensions as contained herein are based upon the "U.S. Survey Foot."
- 2) Ground elevations are based on an observed GPS elevation (NAVD 1988 DATUM).
- 3) NEAREST EXISTING WELL: KLEIN USX B19-04 968'
- 4) IMPROVEMENTS: See LOCATION DRAWING exhibit for all visible improvements within 400' of disturbed area.
- 5) SURFACE USE: IRRIGATED CROP
- 6) INSTRUMENT OPERATOR: BRIAN BRINKMAN

**SURFACE LOCATION**  
LATITUDE: 40.38993°N  
LONGITUDE: 104.60252°W  
PDOP: 1.0  
ELEV: 4631  
1/4, 1/4: NE1/4NE1/4

**BOTTOM HOLE**  
LATITUDE: 40.38842°N  
LONGITUDE: 104.60216°W

NEAREST PROPERTY LINE: 175' EAST

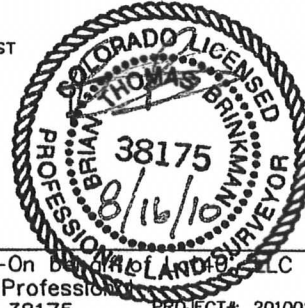
## LEGEND

- = ALIQUOT MONUMENT AS DESCRIBED
- = CALCULATED POSITION

**NOTE**

According to Colorado law, you must commence any legal action based upon any defect in this W.L.C. within three years after you discover such defect. In no event, may any action based upon any defect in this survey be commenced more than ten years after the date of the certificate shown hereon. (13-80-105 C.R.S.)

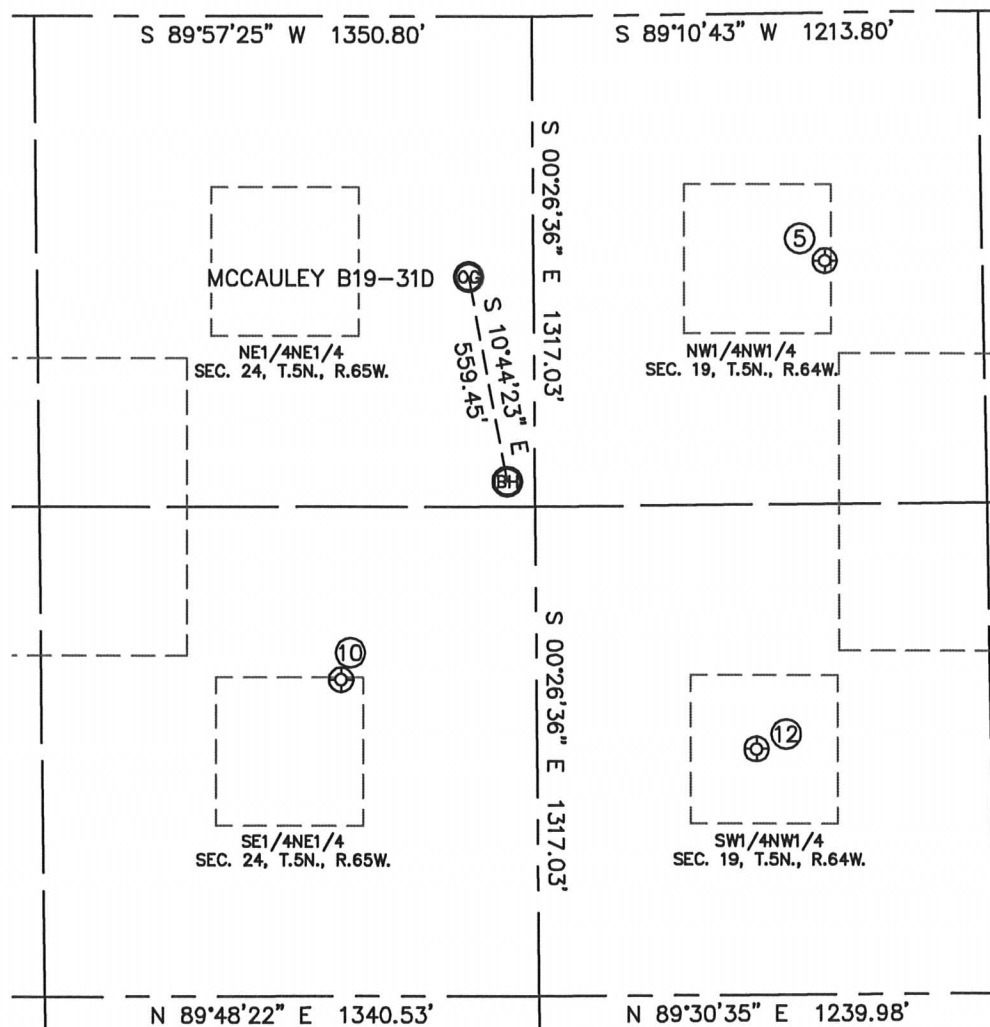
Brian T. Brinkman—On behalf of Lat40°, LLC  
Colorado Licensed Professional  
Land Surveyor No. 38175



PROJECT#: 2010026

# SITE SKETCH

SECTION: 24  
TOWNSHIP: 5N  
RANGE: 65W



⑤

KLEIN USX B19-04  
NW1/4NW1/4  
666' FNL  
792' FWL  
LAT-40.39003°N  
LONG-104.59904°W  
PDOP: 1.6  
ELEV: 4629

⑩

SANDIN 24-8H5  
SE1/4NE1/4  
1783' FNL  
530' FEL  
LAT-40.38697°N  
LONG-104.60380°W  
PDOP: 5.2  
ELEV: 4632

⑫

KLEIN 1-19-5-64  
SW1/4NW1/4  
1977' FNL  
596' FWL  
LAT-40.38643°N  
LONG-104.59976°W  
PDOP: 2.9  
ELEV: 4632

