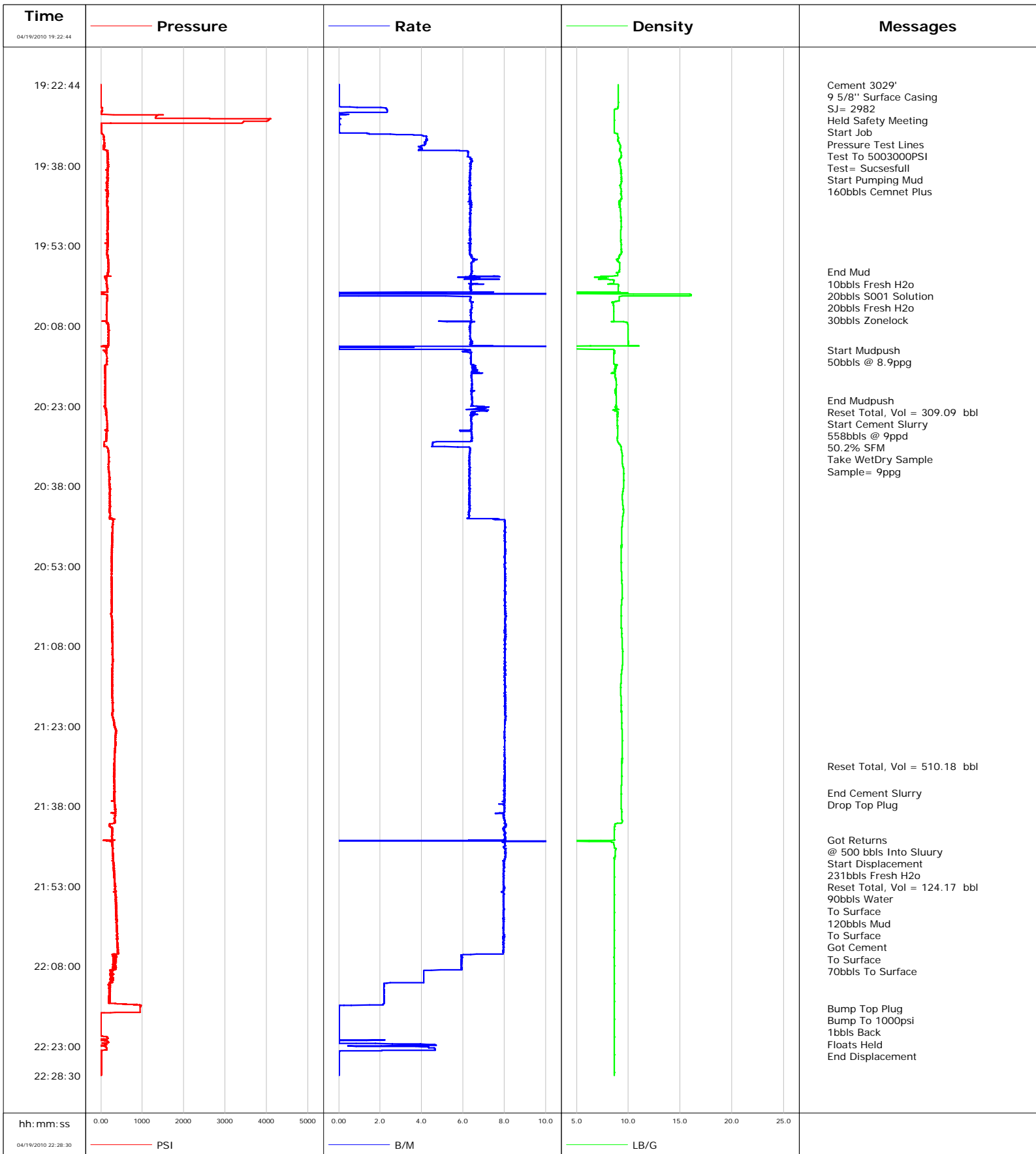


Well	SGU 8504A-25 F25 496	Client	ENCANA
Field	N PARACHUTE	SIR No.	B2IJ-00145
Engineer	JASON CRICK	Job Type	SURFACE
Country	United States	Job Date	04-19-2010



Well		Field		Job Start		Customer		Job Number	
SGU 8504A-25 F25 496		N PARACHUTE		Apr/19/2010		ENCANA		B2IJ-00145	
Date	Time 24-hr clock	Treating Pressure PSI	Flow Rate B/M	Density LB/G	Volume BBL	Message			
04/19/2010	19:26:54	-6	0.1	8.99	0.0				
04/19/2010	19:27:24	27	2.3	8.69	0.9				
04/19/2010	19:27:54	22	2.3	8.65	2.1				
04/19/2010	19:28:24	1502	0.3	8.65	2.3				
04/19/2010	19:28:54	1320	0.0	8.65	2.3				
04/19/2010	19:29:24	4049	0.0	8.65	2.3				
04/19/2010	19:29:54	3418	0.0	8.65	2.3				
04/19/2010	19:30:24	5	0.0	8.65	2.3				
04/19/2010	19:30:54	3	0.0	8.65	2.3				
04/19/2010	19:31:24	3	0.0	8.65	2.3				
04/19/2010	19:31:54	15	1.4	8.85	2.4				
04/19/2010	19:32:24	76	4.2	8.98	3.9				
04/19/2010	19:32:38					Start Pumping Mud			
04/19/2010	19:32:38	76	4.2	9.00	4.9				
04/19/2010	19:32:43					160bbls Cemnet Plus			
04/19/2010	19:32:43	73	4.2	9.01	5.2				
04/19/2010	19:32:54	78	4.2	9.01	6.0				
04/19/2010	19:33:24	78	4.2	9.04	8.1				
04/19/2010	19:33:54	87	4.2	9.17	10.2				
04/19/2010	19:34:24	95	3.9	9.22	12.2				
04/19/2010	19:34:54	51	4.0	9.22	14.2				
04/19/2010	19:35:24	162	6.2	9.26	16.9				
04/19/2010	19:35:54	174	6.2	9.31	20.0				
04/19/2010	19:36:24	168	6.4	9.28	23.1				
04/19/2010	19:36:54	156	6.4	9.14	26.3				
04/19/2010	19:37:24	170	6.4	9.20	29.5				
04/19/2010	19:37:54	173	6.4	9.24	32.7				
04/19/2010	19:38:24	170	6.4	9.27	35.9				
04/19/2010	19:38:54	167	6.3	9.29	39.0				
04/19/2010	19:39:24	162	6.4	9.29	42.2				
04/19/2010	19:39:54	158	6.3	9.33	45.4				
04/19/2010	19:40:24	161	6.3	9.34	48.6				
04/19/2010	19:40:54	153	6.3	9.33	51.7				
04/19/2010	19:41:24	155	6.3	9.26	54.9				
04/19/2010	19:41:54	153	6.3	9.23	58.0				
04/19/2010	19:42:24	154	6.3	9.30	61.2				
04/19/2010	19:42:54	160	6.3	9.29	64.4				
04/19/2010	19:43:24	166	6.3	9.31	67.5				
04/19/2010	19:43:54	160	6.3	9.35	70.7				
04/19/2010	19:44:24	139	6.3	9.22	73.9				
04/19/2010	19:44:54	133	6.4	9.11	77.0				
04/19/2010	19:45:24	150	6.4	9.23	80.2				
04/19/2010	19:45:54	162	6.3	9.23	83.4				
04/19/2010	19:46:24	164	6.4	9.24	86.6				
04/19/2010	19:46:54	174	6.3	9.27	89.8				
04/19/2010	19:47:24	173	6.4	9.28	92.9				
04/19/2010	19:47:54	165	6.3	9.29	96.1				
04/19/2010	19:48:24	167	6.3	9.29	99.3				
04/19/2010	19:48:54	158	6.3	9.29	102.5				
04/19/2010	19:49:24	169	6.3	9.30	105.6				
04/19/2010	19:49:54	173	6.3	9.31	108.8				
04/19/2010	19:50:24	166	6.3	9.26	112.0				
04/19/2010	19:50:54	161	6.3	9.28	115.1				
04/19/2010	19:51:24	172	6.3	9.28	118.3				

Well		Field		Job Start		Customer		Job Number	
SGU 8504A-25 F25 496		N PARACHUTE		Apr/19/2010		ENCANA		B2IJ-00145	
Date	Time 24-hr clock	Treating Pressure PSI	Flow Rate B/M	Density LB/G	Volume BBL	Message			
04/19/2010	19:52:24	171	6.3	9.29	124.6				
04/19/2010	19:52:54	169	6.4	9.32	127.8				
04/19/2010	19:53:24	158	6.3	9.31	131.0				
04/19/2010	19:53:54	148	6.3	9.33	134.2				
04/19/2010	19:54:24	137	6.3	9.31	137.3				
04/19/2010	19:54:54	161	6.4	9.14	140.5				
04/19/2010	19:55:24	174	6.5	9.02	143.7				
04/19/2010	19:55:54	173	6.5	9.02	147.0				
04/19/2010	19:56:24	191	6.4	9.17	150.2				
04/19/2010	19:56:54	189	6.4	9.18	153.4				
04/19/2010	19:57:24	194	6.4	9.18	156.6				
04/19/2010	19:57:51					End Mud			
04/19/2010	19:57:51	184	6.4	9.17	159.5				
04/19/2010	19:57:54	195	6.4	9.13	159.8				
04/19/2010	19:58:20					10bbbls Fresh H2o			
04/19/2010	19:58:20	178	6.4	8.99	162.6				
04/19/2010	19:58:24	169	6.4	8.99	163.0				
04/19/2010	19:58:54	117	6.8	7.09	166.3				
04/19/2010	19:59:24	134	6.4	8.56	169.6				
04/19/2010	19:59:54	139	6.4	8.61	172.8				
04/19/2010	20:00:12					20bbbls S001 Solution			
04/19/2010	20:00:12	143	6.6	8.82	174.8				
04/19/2010	20:00:24	149	6.4	9.06	176.0				
04/19/2010	20:00:54	158	6.3	9.04	179.2				
04/19/2010	20:01:24	152	6.4	9.03	182.4				
04/19/2010	20:01:54	24	0.0	3.57	184.7				
04/19/2010	20:02:24	148	1.0	11.01	185.6				
04/19/2010	20:02:54	149	6.4	9.13	188.7				
04/19/2010	20:03:24	152	6.4	8.82	191.8				
04/19/2010	20:03:54	147	6.4	8.56	195.0				
04/19/2010	20:03:58					20bbbls Fresh H2o			
04/19/2010	20:03:58	137	6.4	8.56	195.5				
04/19/2010	20:04:24	136	6.4	8.58	198.3				
04/19/2010	20:04:54	136	6.4	8.61	201.5				
04/19/2010	20:05:24	140	6.4	8.61	204.6				
04/19/2010	20:05:54	137	6.4	8.61	207.8				
04/19/2010	20:06:24	133	6.4	8.61	211.0				
04/19/2010	20:06:54	140	6.4	8.61	214.2				
04/19/2010	20:06:56					30bbbls Zonelock			
04/19/2010	20:06:56	138	6.4	8.61	214.4				
04/19/2010	20:07:24	171	6.4	9.92	217.4				
04/19/2010	20:07:54	177	6.3	9.96	220.5				
04/19/2010	20:08:24	202	6.3	9.97	223.7				
04/19/2010	20:08:54	186	6.3	9.97	226.9				
04/19/2010	20:09:24	197	6.3	9.97	230.0				
04/19/2010	20:09:54	180	6.3	9.97	233.2				
04/19/2010	20:10:24	175	6.3	9.98	236.4				
04/19/2010	20:10:54	187	6.5	10.00	239.6				
04/19/2010	20:11:24	183	6.4	9.98	242.8				
04/19/2010	20:11:54	122	0.0	1.11	246.3				
04/19/2010	20:12:24	138	5.6	8.52	246.5				
04/19/2010	20:12:31					Start Mudpush			
04/19/2010	20:12:31	130	6.3	8.61	247.2				
04/19/2010	20:12:54	133	6.1	8.67	249.5				

Well			Field		Job Start	Customer	Job Number
SGU 8504A-25 F25 496			N PARACHUTE		Apr/19/2010	ENCANA	B2IJ-00145
Date	Time 24-hr clock	Treating Pressure PSI	Flow Rate B/M	Density LB/G	Volume BBL	Message	
04/19/2010	20:12:57	136	6.4	8.62	249.9		
04/19/2010	20:13:24	139	6.4	8.59	252.7		
04/19/2010	20:13:54	150	6.4	8.61	255.9		
04/19/2010	20:14:24	140	6.4	8.61	259.1		
04/19/2010	20:14:54	146	6.4	8.61	262.3		
04/19/2010	20:15:24	89	6.5	8.87	265.5		
04/19/2010	20:15:54	102	6.5	8.79	268.8		
04/19/2010	20:16:24	96	6.6	8.68	272.0		
04/19/2010	20:16:54	102	6.9	8.44	275.3		
04/19/2010	20:17:24	104	6.4	8.70	278.6		
04/19/2010	20:17:54	107	6.4	8.80	281.8		
04/19/2010	20:18:24	106	6.4	8.82	285.0		
04/19/2010	20:18:54	108	6.4	8.84	288.2		
04/19/2010	20:19:24	107	6.4	8.84	291.4		
04/19/2010	20:19:54	104	6.4	8.76	294.6		
04/19/2010	20:20:24	105	6.4	8.81	297.8		
04/19/2010	20:20:54	106	6.4	8.81	301.1		
04/19/2010	20:21:24	106	6.4	8.84	304.3		
04/19/2010	20:21:54	103	6.4	8.84	307.5		
04/19/2010	20:21:56					End Mudpush	
04/19/2010	20:21:56	103	6.4	8.84	307.7		
04/19/2010	20:22:09					Reset Total, Vol = 309.09 bbl	
04/19/2010	20:22:09	105	6.4	8.85	309.1		
04/19/2010	20:22:24	108	6.4	8.85	310.7		
04/19/2010	20:22:33					Start Cement Slurry	
04/19/2010	20:22:33	105	6.4	8.84	311.7		
04/19/2010	20:22:34					558bbls @ 9ppd	
04/19/2010	20:22:34	100	6.5	8.84	311.8		
04/19/2010	20:22:35					50.2% SFM	
04/19/2010	20:22:35					Take WetDry Sample	
04/19/2010	20:22:35					Sample= 9ppg	
04/19/2010	20:22:35	101	6.4	8.84	311.9		
04/19/2010	20:22:54	99	6.5	8.80	313.9		
04/19/2010	20:23:24	113	6.9	8.79	317.3		
04/19/2010	20:23:54	120	6.9	8.77	320.7		
04/19/2010	20:24:24	127	6.4	8.99	324.0		
04/19/2010	20:24:54	134	6.5	8.94	327.3		
04/19/2010	20:25:24	137	6.4	8.94	330.5		
04/19/2010	20:25:54	148	6.4	8.94	333.6		
04/19/2010	20:26:24	152	6.4	8.95	336.8		
04/19/2010	20:26:54	156	6.4	8.95	340.1		
04/19/2010	20:27:24	150	6.4	8.96	343.3		
04/19/2010	20:27:54	144	6.4	8.97	346.4		
04/19/2010	20:28:24	134	6.4	8.97	349.6		
04/19/2010	20:28:54	134	6.4	8.95	352.8		
04/19/2010	20:29:24	137	6.4	8.93	356.0		
04/19/2010	20:29:54	78	4.5	9.04	358.8		
04/19/2010	20:30:24	82	4.5	9.22	361.1		
04/19/2010	20:30:54	154	6.3	9.31	363.7		
04/19/2010	20:31:24	179	6.3	9.35	366.9		
04/19/2010	20:31:54	191	6.3	9.39	370.1		
04/19/2010	20:32:24	190	6.3	9.41	373.2		
04/19/2010	20:32:54	194	6.3	9.41	376.4		
04/19/2010	20:33:24	190	6.3	9.42	379.5		

Well		Field		Job Start		Customer		Job Number	
SGU 8504A-25 F25 496		N PARACHUTE		Apr/19/2010		ENCANA		B2IJ-00145	
Date	Time 24-hr clock	Treating Pressure PSI	Flow Rate B/M	Density LB/G	Volume BBL	Message			
04/19/2010	20:34:24	183	6.3	9.48	385.8				
04/19/2010	20:34:54	184	6.3	9.54	389.0				
04/19/2010	20:35:24	195	6.3	9.55	392.2				
04/19/2010	20:35:54	209	6.3	9.55	395.3				
04/19/2010	20:36:24	216	6.3	9.55	398.5				
04/19/2010	20:36:54	197	6.3	9.57	401.6				
04/19/2010	20:37:24	199	6.3	9.56	404.8				
04/19/2010	20:37:54	206	6.3	9.55	407.9				
04/19/2010	20:38:24	212	6.3	9.53	411.1				
04/19/2010	20:38:54	220	6.3	9.49	414.2				
04/19/2010	20:39:24	211	6.3	9.45	417.4				
04/19/2010	20:39:54	214	6.3	9.42	420.5				
04/19/2010	20:40:24	215	6.3	9.42	423.7				
04/19/2010	20:40:54	220	6.3	9.44	426.8				
04/19/2010	20:41:24	211	6.3	9.46	430.0				
04/19/2010	20:41:54	227	6.3	9.50	433.1				
04/19/2010	20:42:24	212	6.3	9.52	436.3				
04/19/2010	20:42:54	217	6.3	9.54	439.5				
04/19/2010	20:43:24	220	6.3	9.50	442.6				
04/19/2010	20:43:54	213	6.3	9.46	445.7				
04/19/2010	20:44:24	299	8.0	9.45	449.3				
04/19/2010	20:44:54	294	8.0	9.41	453.3				
04/19/2010	20:45:24	284	8.0	9.39	457.3				
04/19/2010	20:45:54	284	8.0	9.37	461.3				
04/19/2010	20:46:24	276	8.0	9.36	465.3				
04/19/2010	20:46:54	268	8.0	9.36	469.3				
04/19/2010	20:47:24	280	8.0	9.35	473.3				
04/19/2010	20:47:54	285	8.0	9.34	477.4				
04/19/2010	20:48:24	276	8.0	9.35	481.4				
04/19/2010	20:48:54	275	8.0	9.34	485.4				
04/19/2010	20:49:24	271	8.0	9.33	489.4				
04/19/2010	20:49:54	268	8.0	9.33	493.4				
04/19/2010	20:50:24	257	8.0	9.33	497.4				
04/19/2010	20:50:54	265	8.0	9.33	501.4				
04/19/2010	20:51:24	267	8.0	9.32	505.4				
04/19/2010	20:51:54	270	8.0	9.32	509.4				
04/19/2010	20:52:24	269	8.0	9.32	513.5				
04/19/2010	20:52:54	261	8.0	9.32	517.5				
04/19/2010	20:53:24	258	8.0	9.32	521.5				
04/19/2010	20:53:54	257	8.0	9.33	525.5				
04/19/2010	20:54:24	259	8.0	9.34	529.5				
04/19/2010	20:54:54	253	8.0	9.35	533.5				
04/19/2010	20:55:24	260	8.0	9.36	537.5				
04/19/2010	20:55:54	263	8.0	9.37	541.5				
04/19/2010	20:56:24	260	8.0	9.38	545.6				
04/19/2010	20:56:54	258	8.0	9.39	549.6				
04/19/2010	20:57:24	260	8.0	9.40	553.6				
04/19/2010	20:57:54	262	8.0	9.41	557.6				
04/19/2010	20:58:24	257	8.0	9.41	561.6				
04/19/2010	20:58:54	267	8.0	9.40	565.6				
04/19/2010	20:59:24	266	8.0	9.37	569.6				
04/19/2010	20:59:54	267	8.0	9.35	573.7				
04/19/2010	21:00:24	267	8.0	9.33	577.7				
04/19/2010	21:00:54	266	8.0	9.32	581.7				

Well			Field		Job Start	Customer	Job Number
SGU 8504A-25 F25 496			N PARACHUTE		Apr/19/2010	ENCANA	B2IJ-00145
Date	Time 24-hr clock	Treating Pressure PSI	Flow Rate B/M	Density LB/G	Volume BBL	Message	
04/19/2010	21:01:54	240	8.1	9.31	589.7		
04/19/2010	21:02:24	263	8.1	9.30	593.7		
04/19/2010	21:02:54	274	8.1	9.29	597.8		
04/19/2010	21:03:24	274	8.0	9.29	601.8		
04/19/2010	21:03:54	274	8.0	9.31	605.8		
04/19/2010	21:04:24	274	8.0	9.33	609.8		
04/19/2010	21:04:54	268	8.0	9.34	613.8		
04/19/2010	21:05:24	285	8.0	9.35	617.8		
04/19/2010	21:05:54	283	8.0	9.37	621.8		
04/19/2010	21:06:24	276	8.0	9.38	625.9		
04/19/2010	21:06:54	272	8.0	9.39	629.9		
04/19/2010	21:07:24	280	8.0	9.40	633.9		
04/19/2010	21:07:54	286	8.0	9.41	637.9		
04/19/2010	21:08:24	272	8.0	9.42	641.9		
04/19/2010	21:08:54	283	8.0	9.44	645.9		
04/19/2010	21:09:24	276	8.0	9.45	649.9		
04/19/2010	21:09:54	281	8.0	9.46	653.9		
04/19/2010	21:10:24	294	8.0	9.46	657.9		
04/19/2010	21:10:54	289	8.0	9.45	662.0		
04/19/2010	21:11:24	288	8.0	9.44	666.0		
04/19/2010	21:11:54	276	8.0	9.41	670.0		
04/19/2010	21:12:24	273	8.0	9.38	674.0		
04/19/2010	21:12:54	273	8.0	9.36	678.0		
04/19/2010	21:13:24	268	8.0	9.33	682.0		
04/19/2010	21:13:54	280	8.0	9.31	686.0		
04/19/2010	21:14:24	280	8.0	9.30	690.0		
04/19/2010	21:14:54	279	8.0	9.29	694.0		
04/19/2010	21:15:24	270	8.0	9.28	698.0		
04/19/2010	21:15:54	275	8.0	9.27	702.1		
04/19/2010	21:16:24	279	8.0	9.27	706.1		
04/19/2010	21:16:54	268	8.0	9.27	710.1		
04/19/2010	21:17:24	273	8.0	9.29	714.1		
04/19/2010	21:17:54	278	8.1	9.30	718.1		
04/19/2010	21:18:24	283	8.0	9.31	722.1		
04/19/2010	21:18:54	297	8.0	9.32	726.1		
04/19/2010	21:19:24	293	8.0	9.33	730.2		
04/19/2010	21:19:54	293	8.0	9.33	734.2		
04/19/2010	21:20:24	274	8.0	9.33	738.2		
04/19/2010	21:20:54	269	8.0	9.34	742.2		
04/19/2010	21:21:24	288	8.0	9.35	746.2		
04/19/2010	21:21:54	313	8.0	9.35	750.3		
04/19/2010	21:22:24	322	8.0	9.36	754.3		
04/19/2010	21:22:54	327	8.0	9.36	758.3		
04/19/2010	21:23:24	340	8.0	9.37	762.3		
04/19/2010	21:23:54	353	8.0	9.39	766.3		
04/19/2010	21:24:24	356	8.0	9.40	770.3		
04/19/2010	21:24:54	348	8.0	9.41	774.3		
04/19/2010	21:25:24	352	8.0	9.40	778.3		
04/19/2010	21:25:54	354	8.0	9.40	782.3		
04/19/2010	21:26:24	346	8.0	9.40	786.3		
04/19/2010	21:26:54	349	8.0	9.40	790.3		
04/19/2010	21:27:24	339	8.0	9.40	794.3		
04/19/2010	21:27:54	333	8.0	9.40	798.3		
04/19/2010	21:28:24	336	8.0	9.39	802.3		

Well		Field		Job Start		Customer		Job Number	
SGU 8504A-25 F25 496		N PARACHUTE		Apr/19/2010		ENCANA		B2IJ-00145	
Date	Time 24-hr clock	Treating Pressure PSI	Flow Rate B/M	Density LB/G	Volume BBL	Message			
04/19/2010	21:29:24	342	8.0	9.38	810.3				
04/19/2010	21:29:54	333	8.0	9.38	814.4				
04/19/2010	21:30:24	324	8.0	9.37	818.4				
04/19/2010	21:30:31					Reset Total, Vol = 510.18 bbl			
04/19/2010	21:30:31	330	8.0	9.37	819.3				
04/19/2010	21:30:54	331	8.0	9.37	822.4				
04/19/2010	21:31:24	324	8.0	9.37	826.4				
04/19/2010	21:31:54	318	8.0	9.37	830.4				
04/19/2010	21:32:24	327	8.0	9.37	834.4				
04/19/2010	21:32:54	325	8.0	9.36	838.4				
04/19/2010	21:33:24	325	8.0	9.35	842.4				
04/19/2010	21:33:54	329	8.0	9.34	846.4				
04/19/2010	21:34:24	327	8.0	9.33	850.4				
04/19/2010	21:34:54	320	8.0	9.32	854.4				
04/19/2010	21:35:24	326	8.0	9.32	858.4				
04/19/2010	21:35:32					End Cement Slurry			
04/19/2010	21:35:32	322	8.0	9.32	859.5				
04/19/2010	21:35:36					Drop Top Plug			
04/19/2010	21:35:36	333	8.0	9.31	860.0				
04/19/2010	21:35:54	324	8.0	9.31	862.4				
04/19/2010	21:36:24	326	8.0	9.31	866.4				
04/19/2010	21:36:54	336	8.0	9.31	870.4				
04/19/2010	21:37:24	333	8.0	9.31	874.4				
04/19/2010	21:37:54	344	8.0	9.31	878.4				
04/19/2010	21:38:24	336	8.0	9.33	882.4				
04/19/2010	21:38:54	343	8.0	9.34	886.4				
04/19/2010	21:39:24	355	7.8	9.35	890.3				
04/19/2010	21:39:54	355	8.0	9.36	894.3				
04/19/2010	21:40:24	337	8.0	9.37	898.3				
04/19/2010	21:40:54	338	8.0	9.43	902.3				
04/19/2010	21:41:24	217	8.1	8.71	906.3				
04/19/2010	21:41:54	216	8.0	8.69	910.3				
04/19/2010	21:42:24	274	8.0	8.65	914.3				
04/19/2010	21:42:54	275	8.0	8.65	918.3				
04/19/2010	21:43:24	263	8.0	8.66	922.3				
04/19/2010	21:43:54	272	8.0	8.64	926.4				
04/19/2010	21:44:17					Got Returns			
04/19/2010	21:44:17	274	8.0	8.65	929.4				
04/19/2010	21:44:18					@ 500 bbls Into Slurry			
04/19/2010	21:44:18	274	8.0	8.65	929.6				
04/19/2010	21:44:23					Start Displacement			
04/19/2010	21:44:23	284	8.0	8.64	930.2				
04/19/2010	21:44:24	271	8.0	8.64	930.4				
04/19/2010	21:44:27					231bbls Fresh H2o			
04/19/2010	21:44:27	75	6.3	8.29	930.7				
04/19/2010	21:44:54	270	8.0	8.58	934.9				
04/19/2010	21:45:24	283	8.0	8.64	938.9				
04/19/2010	21:45:54	278	8.0	8.65	942.9				
04/19/2010	21:45:58					Reset Total, Vol = 124.17 bbl			
04/19/2010	21:45:58	278	8.1	8.82	943.5				
04/19/2010	21:46:24	282	8.1	8.74	947.0				
04/19/2010	21:46:54	299	8.0	8.73	951.0				
04/19/2010	21:47:07					90bbls Water			
04/19/2010	21:47:07	293	8.1	8.73	952.7				

Well		Field		Job Start		Customer		Job Number	
SGU 8504A-25 F25 496		N PARACHUTE		Apr/19/2010		ENCANA		B2IJ-00145	
Date	Time 24-hr clock	Treating Pressure PSI	Flow Rate B/M	Density LB/G	Volume BBL	Message			
04/19/2010	21:47:29					To Surface			
04/19/2010	21:47:29	290	8.0	8.72	955.7				
04/19/2010	21:47:54	292	8.0	8.64	959.0				
04/19/2010	21:48:24	295	8.0	8.65	963.0				
04/19/2010	21:48:54	303	8.0	8.65	967.0				
04/19/2010	21:49:24	318	8.0	8.65	971.0				
04/19/2010	21:49:54	314	8.0	8.65	975.0				
04/19/2010	21:50:24	332	8.0	8.65	978.9				
04/19/2010	21:50:54	327	8.0	8.65	982.9				
04/19/2010	21:51:24	317	8.0	8.65	986.9				
04/19/2010	21:51:54	323	7.9	8.65	990.9				
04/19/2010	21:52:24	327	8.0	8.65	994.9				
04/19/2010	21:52:54	344	7.9	8.65	998.8				
04/19/2010	21:53:24	346	8.0	8.65	1002.8				
04/19/2010	21:53:54	350	8.0	8.65	1006.8				
04/19/2010	21:54:24	342	8.0	8.65	1010.8				
04/19/2010	21:54:54	355	8.0	8.65	1014.8				
04/19/2010	21:55:24	363	8.0	8.65	1018.7				
04/19/2010	21:55:54	363	7.9	8.65	1022.7				
04/19/2010	21:56:24	360	8.0	8.65	1026.7				
04/19/2010	21:56:54	369	8.0	8.65	1030.7				
04/19/2010	21:57:24	367	8.0	8.65	1034.7				
04/19/2010	21:57:54	363	8.0	8.65	1038.6				
04/19/2010	21:58:24	371	7.9	8.65	1042.6				
04/19/2010	21:58:54	381	8.0	8.65	1046.6				
04/19/2010	21:59:24	385	7.9	8.65	1050.6				
04/19/2010	21:59:54	385	8.0	8.65	1054.5				
04/19/2010	22:00:00					120bbbls Mud			
04/19/2010	22:00:00	372	8.0	8.65	1055.3				
04/19/2010	22:00:24	379	8.0	8.65	1058.5				
04/19/2010	22:00:54	385	7.9	8.65	1062.5				
04/19/2010	22:01:00					To Surface			
04/19/2010	22:01:00	387	7.9	8.65	1063.3				
04/19/2010	22:01:24	399	7.9	8.65	1066.5				
04/19/2010	22:01:54	400	8.0	8.65	1070.4				
04/19/2010	22:02:24	393	8.0	8.65	1074.4				
04/19/2010	22:02:54	382	7.9	8.65	1078.4				
04/19/2010	22:03:10					Got Cement			
04/19/2010	22:03:10	395	8.0	8.65	1080.5				
04/19/2010	22:03:11					To Surface			
04/19/2010	22:03:11	389	8.0	8.65	1080.7				
04/19/2010	22:03:24	394	8.0	8.65	1082.4				
04/19/2010	22:03:34					70bbbls To Surface			
04/19/2010	22:03:34	387	7.9	8.65	1083.7				
04/19/2010	22:03:54	409	8.0	8.65	1086.4				
04/19/2010	22:04:24	409	7.9	8.65	1090.3				
04/19/2010	22:04:54	407	7.9	8.65	1094.3				
04/19/2010	22:05:24	404	8.0	8.65	1098.3				
04/19/2010	22:05:54	270	6.0	8.65	1102.1				
04/19/2010	22:06:24	295	6.0	8.63	1105.1				
04/19/2010	22:06:54	334	5.9	8.65	1108.0				
04/19/2010	22:07:24	289	5.9	8.65	1111.0				
04/19/2010	22:07:54	290	5.9	8.65	1113.9				
04/19/2010	22:08:24	292	5.9	8.65	1116.9				

Well		Field		Job Start		Customer		Job Number	
SGU 8504A-25 F25 496		N PARACHUTE		Apr/19/2010		ENCANA		B2IJ-00145	
Date	Time 24-hr clock	Treating Pressure PSI	Flow Rate B/M	Density LB/G	Volume BBL	Message			
04/19/2010	22:09:24	247	4.1	8.65	1121.7				
04/19/2010	22:09:54	234	4.1	8.65	1123.8				
04/19/2010	22:10:24	248	4.1	8.65	1125.8				
04/19/2010	22:10:54	248	4.1	8.65	1127.9				
04/19/2010	22:11:24	199	2.2	8.65	1129.4				
04/19/2010	22:11:54	192	2.2	8.65	1130.5				
04/19/2010	22:12:24	213	2.2	8.65	1131.6				
04/19/2010	22:12:54	192	2.2	8.65	1132.7				
04/19/2010	22:13:24	217	2.2	8.65	1133.8				
04/19/2010	22:13:54	203	2.2	8.65	1134.9				
04/19/2010	22:14:24	218	2.2	8.65	1136.0				
04/19/2010	22:14:54	211	2.2	8.65	1137.1				
04/19/2010	22:15:24	954	0.3	8.65	1138.1				
04/19/2010	22:15:54	947	0.0	8.65	1138.1				
04/19/2010	22:16:00					Bump Top Plug			
04/19/2010	22:16:00	947	0.0	8.65	1138.1				
04/19/2010	22:16:03					Bump To 1000psi			
04/19/2010	22:16:03	947	0.0	8.65	1138.1				
04/19/2010	22:16:24	945	0.0	8.65	1138.1				
04/19/2010	22:16:54	-3	0.0	8.65	1138.1				
04/19/2010	22:17:24	-3	0.0	8.65	1138.1				
04/19/2010	22:17:45					1bbls Back			
04/19/2010	22:17:45	-4	0.0	8.65	1138.1				
04/19/2010	22:17:53					Floats Held			
04/19/2010	22:17:53	-4	0.0	8.65	1138.1				
04/19/2010	22:17:54	-4	0.0	8.65	1138.1				
04/19/2010	22:18:24	-4	0.0	8.65	1138.1				
04/19/2010	22:18:37					End Displacement			
04/19/2010	22:18:37	-4	0.0	8.65	1138.1				
04/19/2010	22:18:54	-4	0.0	8.65	1138.1				
04/19/2010	22:19:24	-5	0.0	8.65	1138.1				
04/19/2010	22:19:54	-4	0.0	8.65	1138.1				
04/19/2010	22:20:24	-4	0.0	8.65	1138.1				
04/19/2010	22:20:54	-5	0.0	8.65	1138.1				
04/19/2010	22:21:24	161	0.0	8.65	1138.1				
04/19/2010	22:21:54	3	2.2	8.65	1138.1				
04/19/2010	22:22:24	175	0.0	8.65	1138.2				
04/19/2010	22:22:54	39	4.4	8.65	1139.7				
04/19/2010	22:23:24	147	4.6	8.65	1141.3				
04/19/2010	22:23:54	1	1.1	8.65	1143.5				
04/19/2010	22:24:24	5	0.0	8.65	1143.5				
04/19/2010	22:24:54	5	0.0	8.65	1143.5				
04/19/2010	22:25:24	5	0.0	8.65	1143.5				
04/19/2010	22:25:54	6	0.0	8.65	1143.5				
04/19/2010	22:26:24	6	0.0	8.65	1143.5				
04/19/2010	22:26:54	6	0.0	8.65	1143.5				
04/19/2010	22:27:24	7	0.0	8.65	1143.5				
04/19/2010	22:27:54	7	0.0	8.65	1143.5				

Well SGU 8504A-25 F25 496	Field N PARACHUTE	Job Start Apr/19/2010	Customer ENCANA	Job Number B2IJ-00145
-------------------------------------	-----------------------------	---------------------------------	---------------------------	---------------------------------

Post Job Summary

Average Pump Rates, bbl/min				Volume of Fluid Injected, bbl			
Slurry 6.8	N2	Mud 6.1	Maximum Rate 25.0	Total Slurry 1143.5	Mud 154.6	Spacer 311.6	N2
Treating Pressure Summary, psi				Breakdown Fluid			
Maximum 4104	Final 6	Average 254	Bump Plug to 1000	Breakdown	Type	Volume	Density
Avg. N2 Percent	Designed Slurry Volume 558.0 bbl	Displacement 278.2 bbl	Mix Water Temp 75 degF	Cement Circulated to Surface? <input checked="" type="checkbox"/>	Volume 70.0 bbl		
Customer or Authorized Representative NORM MCCREARY				Schlumberger Supervisor JASON CRICK		Washed Thru Perfs <input type="checkbox"/>	To
						Circulation Lost <input type="checkbox"/>	Job Completed <input type="checkbox"/>
						-	-



Service Order for i-District Job 308408

Customer Name: ENCANA USA - PARACHUTE FIELD OFC	Person Taking Call: Strickler, Nikole	Location: Grand Junction, CO WS	Order Date: 12/3/2009 12:00 AM	Job Number: 308408		
Service Order Number: B2IJ-00145	Service Line: Cementing	Supervisor: Strickler, Nikole	Legal Location:			
Well Name and Number: SGU 8504A-25 F25 496	Pad/Platform:	Field: Story Gulch	County: RIO BLANCO	State/Prov: CO		
Well Master Number: 0631175401	API/UWI:	Rig Name: PATTERSON 306	Well Age: NEW	Sales Engineer: Hudson, Matthew		
Job Type: Cementing – 9 5/8" Surface Casing	Time Well Ready:	Deviation:	Hole Size:	Well MD: 3000 ft		
Well TVD:	BHP:	BHST: 115 °F	BHCT: 95 °F	Treat Down: Casing		
Packer Type:	Packer Depth:	Well Head Connection:	HHP on Location: 550 hhp	Max Allowed Pressure: 4000 psi		
Max Allowed Ann Pressure: 1500 psi		Job Stage Number: Production casing 12 of 12	FTL Ticket/Quote Number : B2IJ-00145			
Expected on Location: 4/19/2010 12:00 AM	Ready to Pump:	Job Start Date: 4/19/2010 12:00 AM	Job End Date: 4/19/2010 12:00 PM			
Leave for Job: 4/19/2010 12:00:00 AM		Arrive from Job: 4/19/2010 12:00:00 PM				
Casing/Tubing			Service Instructions:			
String Type	Depth	Size	Weight	Grade	Thread	Cement 9 5/8" Surface Casing @ 3000ft w/ 50% Excess 160 bbls CemNET + in mud 30 bbls ZONELOCK 50 bbls MUDPUSH @ 8.6 ppg 1108skts 9.0ppg LiteCRETE Drop plug on fly with 5 bbls 8.6 ppg MudPUSH II Displace w water Displace with water CemNET in all slurry
Perforations						
Top	Bottom	SPF	No of Shots	Formation Name		
Total Interval: 0			Diameter:			
Coiled Tubing						
Size	Thickness	Length	String ID	Reel ID		
Client Contact						
Name	Voice	Fax	Email	Title	Company	Notes
Norman Mcreary	303-353-5354					
Notes: 9 5/8" head, bowl, plug 1000lbs of CemNET 1600lbs of CemNET + 600lbs of S001						

Directions:

Materials				
Name	Code	Description	Quantity	Density
8.6 MudPush		49bbbls Water + 215lbs D182 + 775lbs D031	50.00 bbl	8.60 lb/gal
9.0 LiteCRETE		LiteCRETE Blend + 0.8%D079 + 0.8%D065 + 0.4%D013 + 0.2%D046 + 0.25pps D029		
B290	B290	CemNET+	1,600.00 lb	
D095	D095	D095 Cement Additive	1,000.00 lb	
S001	S001	Calcium Chloride S1	600.00 lb	

Fluid Systems:

8.6 MudPush				
49bbbls Water + 215lbs D182 + 775lbs D031				
<i>Sacks Of:</i>		<i>Total Blend/Cem:</i>		
<i>Sack Weight:</i>		<i>Dry Blend Code:</i>		
<i>Yield:</i>		<i>Final Fluid Density:</i>	8.60	lb/gal
<i>Mix Water:</i>		<i>Base Fluid Den:</i>		
<i>Mix Fluid:</i>		<i>Volume:</i>	50.00	bbl
<i>Mix Water Den:</i>		<i>Base Fluid Vol:</i>		
<i>Sacks Blend/Cem:</i>		<i>Acid Volume:</i>		
<i>Total Mix Water:</i>		<i>Acid Conc:</i>		
<i>Total Mix Fluid:</i>				
Load out Excess				
Code	Conc	Design	Total by design	Load out with excess
D031	15.500 lb/bbl	BWVSpacerV O	775.00 lb	775.00 lb
D182	4.300 lb/bbl	BWVSpacerV O	215.00 lb	215.00 lb

9.0 LiteCRETE				
LiteCRETE Blend + 0.8%D079 + 0.8%D065 + 0.4%D013 + 0.2%D046 + 0.25pps D029				
<i>Sacks Of:</i>	Cement	<i>Total Blend/Cem:</i>	110,800.00	lb
<i>Sack Weight:</i>	100.00 lb	<i>Dry Blend Code:</i>		
<i>Yield:</i>	2.83 ft3/sk	<i>Final Fluid Density:</i>		
<i>Mix Water:</i>	10.62 lb/sk	<i>Base Fluid Den:</i>		
<i>Mix Fluid:</i>	10.62 lb/sk	<i>Volume:</i>		
<i>Mix Water Den:</i>	8.32 lb/gal	<i>Base Fluid Vol:</i>		
<i>Sacks Blend/Cem:</i>	1,108.00 sks	<i>Acid Volume:</i>		
<i>Total Mix Water:</i>	333.20 m3	<i>Acid Conc:</i>		
<i>Total Mix Fluid:</i>	333.20 m3			
Load out Excess				
Code	Conc	Design	Total by design	Load out with excess
D124	53.000 lb/sk	WTSK	58,724.00 lb	58,724.00 lb
D907	37.000 lb/sk	WTSK	40,996.00 lb	40,996.00 lb
D154	10.000 lb/sk	WTSK	11,080.00 lb	11,080.00 lb

D079	0.800 lb/sk	WTSK	886.40 lb	886.40 lb
D065	0.800 lb/sk	WTSK	886.40 lb	886.40 lb
D013	0.400 lb/sk	WTSK	443.20 lb	443.20 lb
D046	0.200 lb/sk	WTSK	221.60 lb	221.60 lb
D029	0.250 lb/sk	WTSK	277.00 lb	277.00 lb

Resources				
Personnel	Equipment 1	Equipment 2	Assignment	Note
	2CSS24561		4/19/2010 2:08 AM - 7:45 PM	
	2CSS26558		4/19/2010 2:08 AM - 7:45 PM	