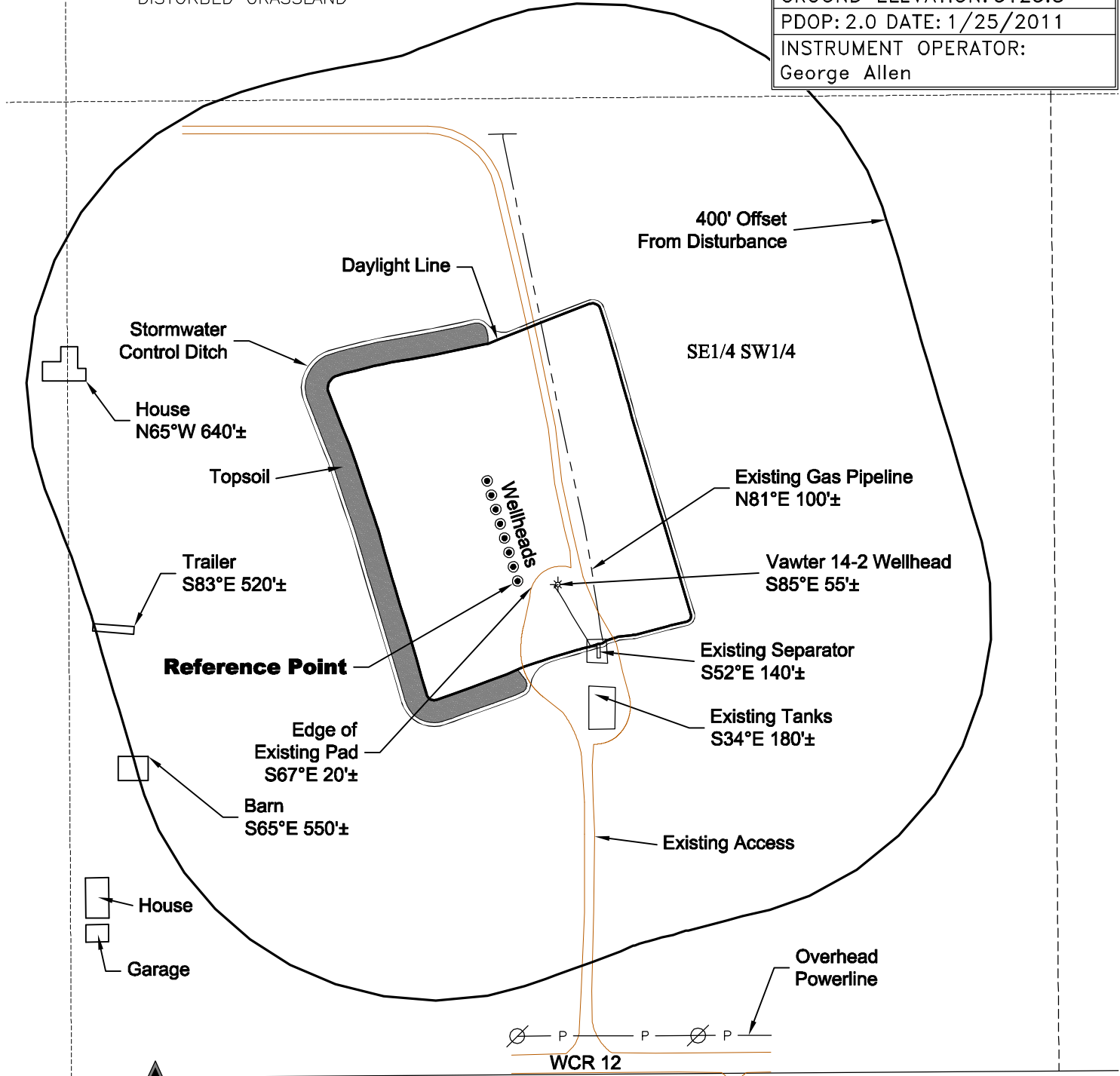


LOCATION DRAWING

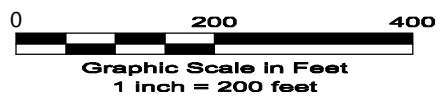
REFERENCE POINT

LATITUDE: 40.07498
LONGITUDE: -104.74685
FOOTAGE: 660 FSL 1917 FWL
GROUND ELEVATION: 5125.8
PDOP: 2.0 DATE: 1/25/2011
INSTRUMENT OPERATOR: George Allen

VEGETATION:
DISTURBED GRASSLAND



DWG: G:\GEO SURV\WeldzNorth\Enprop Inc\Wawter 14-2 F2A.dwg USER: MTC DATE: Jan 31, 2011 2:04pm



DISTURBANCE ACREAGE:
4.7± DRILLING OPERATIONS
1.0± INTERIM RECLAIM

1/31/11

GEO SURV

LAND SURVEYING AND MAPPING
LAFAYETTE - WINTER PARK
Ph 303 666 0379 Fx 303 665 6320

ENPROP, INC.
VAWTER 14-2 PAD

SE1/4 SW1/4 SEC. 2 T1N R66W
6th PM WELD COUNTY COLORADO