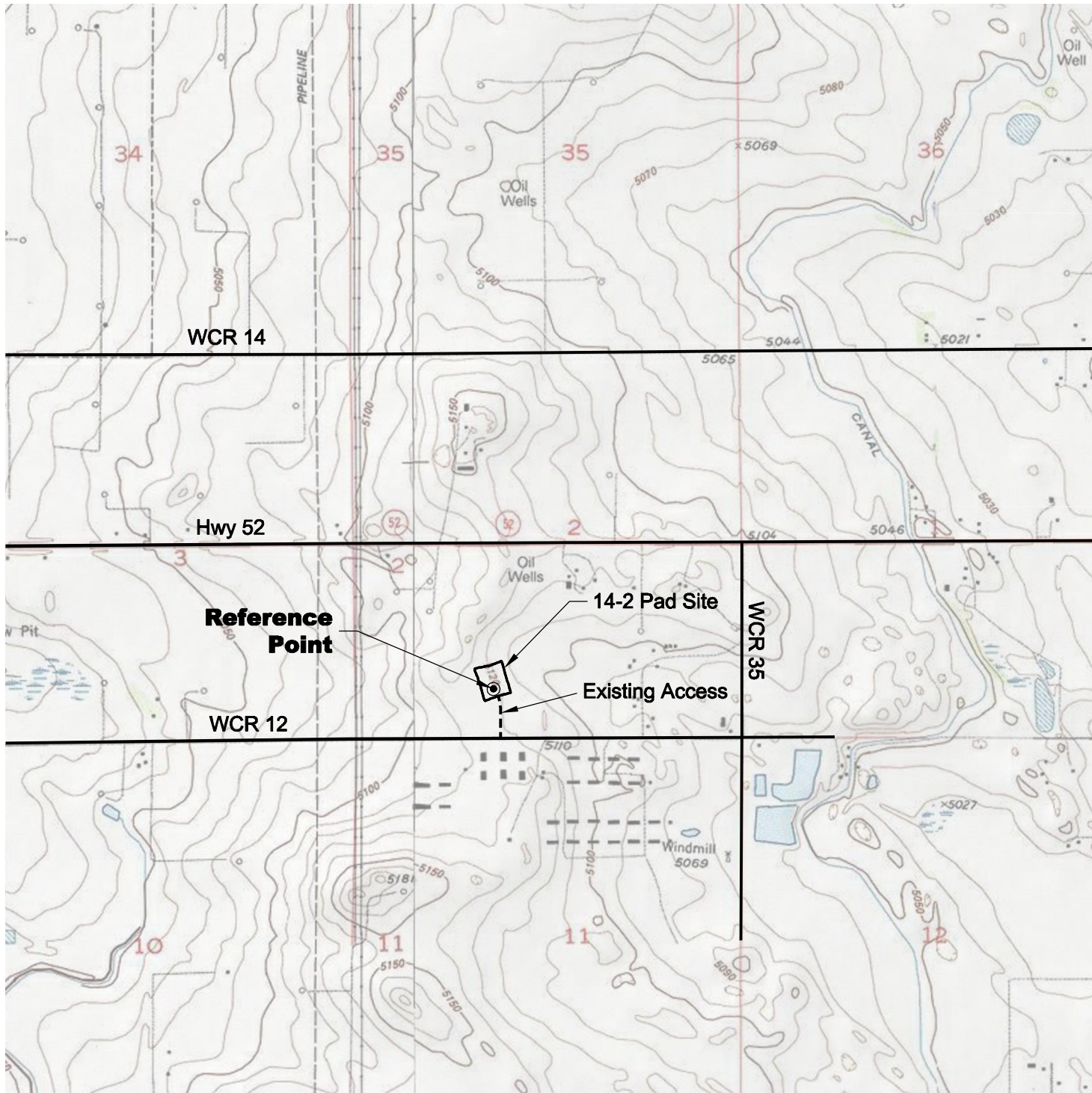


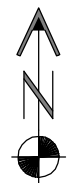
ACCESS ROAD MAP



DRIVING DIRECTIONS:

From Town of Fort Lupton, beginning at intersection of Hwy 85 & Hwy 52;
 Ease on Hwy 52
 MP 2.0 Right on WCR 29 1/2
 MP 2.5 Left on WCR 12
 MP 4.4 Left on gravel access to pad
 MP 4.5 Vawter 14-2 Pad

1/31/11



North



Graphic Scale in Feet
 1 inch = 2000 feet



LAND SURVEYING AND MAPPING
 LAFAYETTE - WINTER PARK
 Ph 303 666 0379 Fx 303 665 6320

ENPROP, INC.
VAWTER 14-2 PAD

SE1/4 SW1/4 SEC. 2 T1N R66W
6th PM WELD COUNTY COLORADO