

MONITOR WELL LOCATION

LAT.	40.526908°
LONG.	104.345504°
LAT.	40.526925°
LONG.	104.344996°
LAT.	40°31'36.87"
LONG.	104°20'43.81"
LAT.	40°31'36.93"
LONG.	104°20'41.99"
NORTH	1436882.27
EAST	3320928.19
NORTH	436882.81
EAST	2321077.66

FOOTAGE: 2374' FEL - 1390' FSL

GROUND ELEV. 4919.8'

INST. OPTR. ADAM HARMON

MEASURE DATE: 02/28/2011

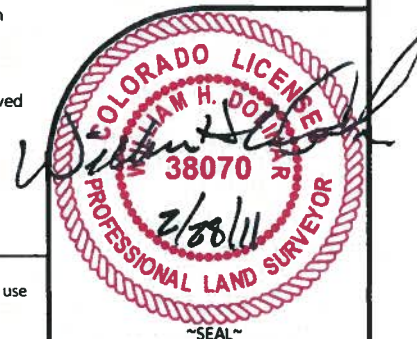
PDOP: 2.3

I, William H. Dollnar, Professional Land Surveyor, CO. RLS # 38070 hereby certify that (in accordance with a request from Anna Walls with Marathon Oil Co, 5555 San Felipe, Houston, TX 77056) I and or personnel under my direction made a survey on the 28th day of February 2011, for the Monitoring Well Location and Elevation of Marathon Oil Co. Crow Valley 7-62-32-1M being located within the NW1/4 SE1/4 Section 32, T7N R62W, of the 6th P.M., Weld County, State of Colorado.

- All bearings and distances are GRID based on the Colorado State Plane Coordinate System, North Zone, North American Datum 1983 from GPS observations occupying a WHS control point (5/8" rebar) and having the Location and Elevation derived from an Opus Solution.
- Vertical Datum used is of NAVD 88.
- Record Bearings and Distances as shown are based on the General Land Office Survey plat approved on the 16th day of December 1872.

CONFIDENTIALITY NOTES:

The information contained in this plot is legally privileged and confidential information intended only for the use of the recipients. If you are not the intended recipients, you are hereby notified that any use, dissemination, distribution or copying of this information is strictly prohibited.



WILLIAM H. SMITH & ASSOCIATES P.C.

SURVEYING CONSULTANTS

350 EAST SECOND NORTH PHONE: 307-875-3638
 GREEN RIVER, WY 307-875-3639
www.whsmithpc.com

DRAWN BY: CED

CHECKED BY: WHD

PROJECT NO: 762321M

JOB NO: 2011001

REVISIONS:

LEGEND

- FOUND CORNER
- ⊗ CALCULATED CORNER
- NOTHING FOUND

LOCATION:

CROW VALLEY 7-62-32-1M
 WITHIN THE NW/4
 SE/4 SECTION 32,
 T 7 N, R 62 W,
 6TH PM.
 WELD COUNTY,
 COLORADO

MARATHON OIL COMPANY
 PO BOX 3128, HOUSTON TX, 77253
 5555 SAN FELIPE, HOUSTON TX, 77056

MONITORING WELL PLAT

SCALE: 1"=1000'

EXHIBIT "A"

DATE: 02/27/2011

SHEET 1 OF 1