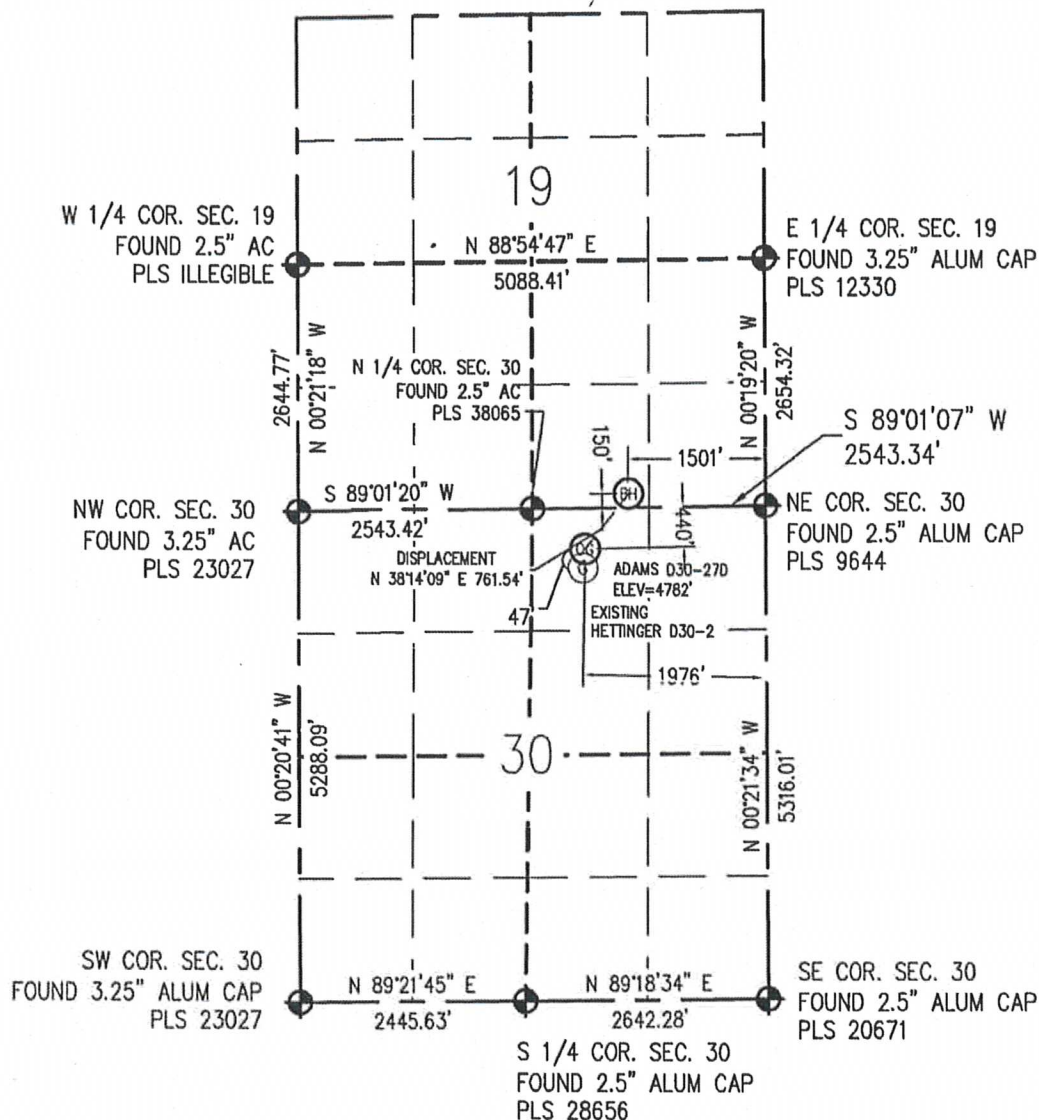


**WELL LOCATION CERTIFICATE**

THIS MAP DOES NOT REPRESENT A BOUNDARY SURVEY



IN ACCORDANCE WITH A REQUEST FROM SEAN CASPER - NOBLE ENERGY, BASELINE ENGINEERING CORP. HAS DETERMINED THE LOCATION OF THE ADAMS D30-270 TO BE 440' FNL AND 1976' FEL, AS MEASURED AT NINETY (90) DEGREES FROM THE SECTION LINE OF SECTION 30, TOWNSHIP 3 NORTH, RANGE 64 WEST AND THE BOTTOM HOLE LOCATION TO BE 150' FSL AND 1501' FEL OF SECTION 19, TOWNSHIP 3 NORTH, RANGE 64 WEST, 6TH PRINCIPAL MERIDIAN, WELD COUNTY, COLORADO.

I HEREBY CERTIFY THAT THIS WELL LOCATION CERTIFICATE WAS PREPARED BY ME, OR UNDER MY DIRECT SUPERVISION, THAT THE FIELD WORK WAS COMPLETED ON 11/04/2010, THAT IT IS NOT A LAND SURVEY PLAT OR AN IMPROVEMENT SURVEY PLAT, AND THAT IT IS NOT TO BE RELIED UPON FOR ESTABLISHMENT OF FENCE, BUILDING, OR OTHER FUTURE IMPROVEMENT LINES.

Scale 1" = 2000 ft

**NOTES:**

- 1) LAT/LONG SHOWN ARE BASED ON A GPS OBSERVATION (NAD83).
- 2) BEARINGS SHOWN ARE GRID BEARINGS OF THE COLORADO STATE PLANE COORDINATE SYSTEM, NORTH ZONE, NORTH AMERICAN DATUM 1983/2007.
- 3) GROUND ELEVATIONS ARE BASED ON A GPS OBSERVATION (NAVD 88 DATUM).
- 4) ALL DISTANCES SHOWN ARE FIELD MEASURED UNLESS OTHERWISE NOTED.
- 5) THE NEAREST EXISTING WELL IS: HETTINGER D30-2 47' SOUTHWEST.
- 6) IMPROVEMENTS: SEE VISIBLE IMPROVEMENTS EXHIBIT FOR ALL VISIBLE IMPROVEMENTS WITHIN 600' OF WELL HEAD.
- 7) SURFACE USE: OPEN RANGE.

**SURFACE HOLE:**  
LATITUDE: 40.202243° N  
LONGITUDE: 104.591609° W  
PDOP: 1.8  
1/4, 1/4: NW1/4 NE1/4  
NEAREST PROPERTY LINE: 440' N

**BOTTOM HOLE:**  
LATITUDE: 40.203871° N  
LONGITUDE: 104.589900° W

**LEGEND**

- - FOUND/SET SURVEY MONUMENT PER MONUMENT RECORD EXCEPTIONS NOTED.
- - CALCULATED SURVEY MONUMENT POSITION
- (C) - CALCULATED DIMENSION

Mark A. Hall  
Professional Land Surveyor Registration No. 36073  
State of Colorado  
FOR AND ON BEHALF OF BASELINE ENGINEERING CORP.

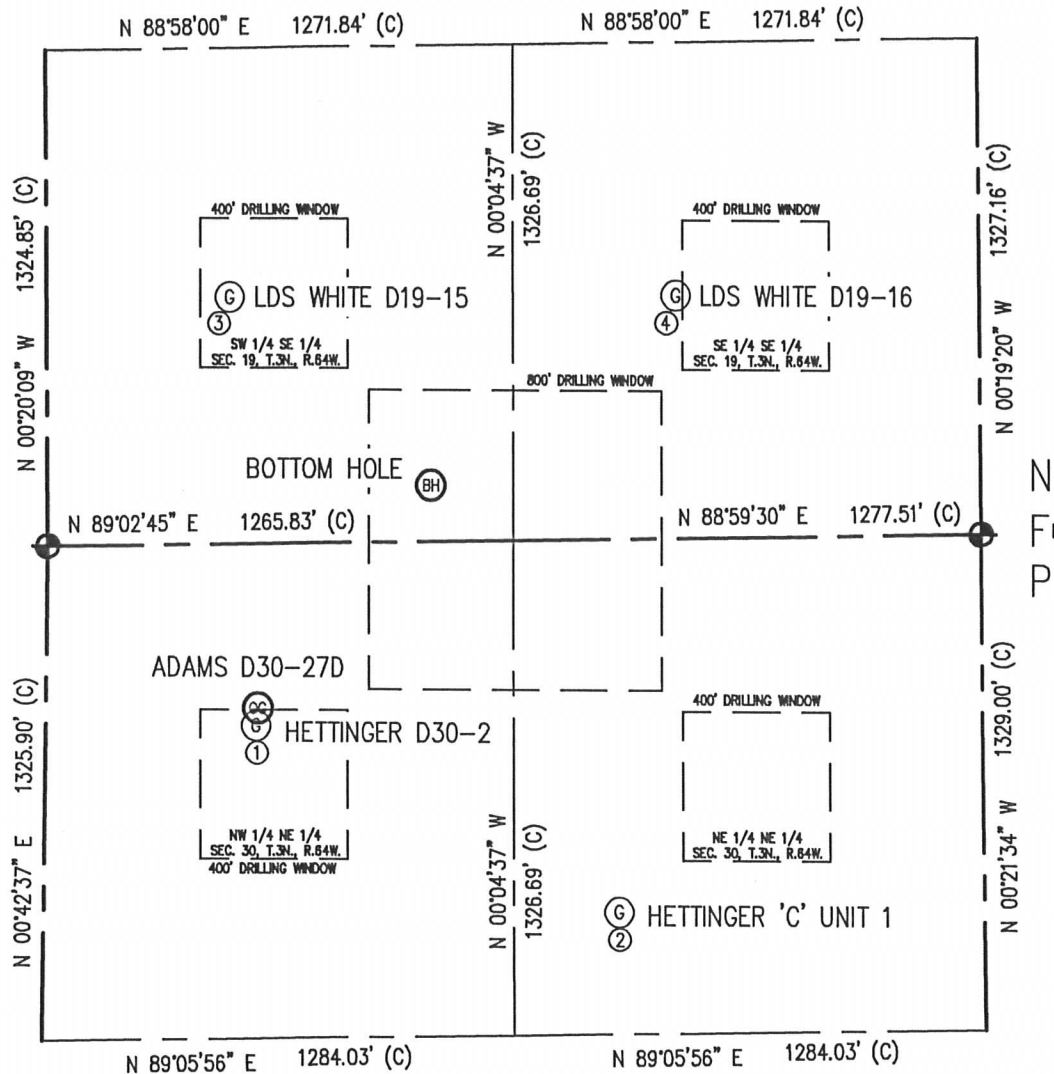
Completed  
11/12/2010

NOTICE: According to Colorado law you MUST commence any legal action based upon any defect in this W.L.C. within three years after you first discover such defect. In no event may any action based upon any defect in this W.L.C. be commenced more than ten years from this said date of the certification show hereon.

JOB #: NOB3N64W30-01

## SITE SKETCH

ADAMS D30-27D

SECTION 19 & 30  
TOWNSHIP 3 NORTH  
RANGE 64 WEST

①

HETTINGER D30-2  
NW 1/4 NE 1/4  
1981' FEL  
487' FNL  
EL=4782'  
LATITUDE: 40.202115° N  
LONGITUDE: 104.591627° W  
PDOP: 1.8

②

HETTINGER 'C' UNIT 1  
NE 1/4 NE 1/4  
994' FEL  
1000' FNL  
EL=4785'  
LATITUDE: 40.200725° N  
LONGITUDE: 104.588102° W  
PDOP: 1.8

③

LDC WHITE D19-15  
SW 1/4 SE 1/4  
2045' FEL  
659' FSL  
EL=4778'  
LATITUDE: 40.205257° N  
LONGITUDE: 104.591840° W  
PDOP: 1.8

④

LDS WHITE D19-16  
SE 1/4 SE 1/4  
828' FEL  
648' FSL  
EL=4778'  
LATITUDE: 40.205250° N  
LONGITUDE: 104.587485° W  
PDOP: 2.4

## NOTES:

- THIS SKETCH DOES NOT REPRESENT A BOUNDARY SURVEY.
- THE DATUM FOR THE LATITUDES AND LONGITUDES ON THIS SKETCH IS NAD83.



0 500  
Scale 1" = 500 ft