

OXY GRAND JUNCTION EBUSINESS
DO NOT MAIL
BROWNFIELD, Texas

CC
CC 697-15-17A

H&P 353/H&P/353

Post Job Summary

Cement Surface Casing

Prepared for:
Date Prepared:
Version: 1

Service Supervisor: SMITH, DUSTIN

Submitted by:

HALLIBURTON

The Road to Excellence Starts with Safety

The Road to Excellence Starts With Safety							
Sold To #: 344034		Ship To #: 2826549		Quote #:		Sales Order #: 7840784	
Customer: OXY GRAND JUNCTION EBUSINESS				Customer Rep: Goddeyene, Andy			
Well Name: CC			Well #: 697-15-17A			API/UWI #: 05-045-19501	
Field: GRAND VALLEY		City (SAP): UNKNOWN		County/Parish: Garfield			State: Colorado
Lat: N 39.53 deg. OR N 39 deg. 31 min. 46.211 secs.				Long: W 108.213 deg. OR W -109 deg. 47 min. 12.613 secs.			
Contractor: H&P 353			Rig/Platform Name/Num: H&P 353				
Job Purpose: Cement Surface Casing							
Well Type: Development Well			Job Type: Cement Surface Casing				
Sales Person: DUNNING, DUSTIN			Srvs Supervisor: SMITH, DUSTIN			MBU ID Emp #: 418015	

Job Personnel

HES Emp Name	Exp Hrs	Emp #	HES Emp Name	Exp Hrs	Emp #	HES Emp Name	Exp Hrs	Emp #
JENSEN, SHANE Lynn		441759	SALAZAR, PAUL Omar		445614	SCOLLARD, GARRY		485297
SMITH, DUSTIN Michael		418015						

Equipment

HES Unit #	Distance-1 way	HES Unit #	Distance-1 way	HES Unit #	Distance-1 way	HES Unit #	Distance-1 way
10001431	mile	10616651C	mile	10804579	mile	10951248	mile
10995025	mile						

Job Hours

Date	On Location Hours	Operating Hours	Date	On Location Hours	Operating Hours	Date	On Location Hours	Operating Hours

TOTAL Total is the sum of each column separately

Job

Formation Name					Job Times			
Formation Depth (MD)	Top	Bottom			Called Out	Date	Time	Time Zone
Form Type		BHST			On Location	20 - Dec - 2010	21:30	MST
Job depth MD	2730. ft	Job Depth TVD	2710. ft		Job Started	21 - Dec - 2010	06:00	MST
Water Depth		Wk Ht Above Floor	5. ft		Job Completed	21 - Dec - 2010	11:56	MST
Perforation Depth (MD)	From	To			Departed Loc	21 - Dec - 2010	19:43	MST
						22:30		MST

Well Data

Description	New / Used	Max pressure psig	Size in	ID in	Weight lbm/ft	Thread	Grade	Top MD ft	Bottom MD ft	Top TVD ft	Bottom TVD ft
-------------	------------	-------------------	---------	-------	---------------	--------	-------	-----------	--------------	------------	---------------

Sales/Rental/3rd Party (HES)

Description	Qty	Qty uom	Depth	Supplier
PLUG,CMTG,TOP,9 5/8,HWE,8.16 MIN/9.06 MA	1	EA		
R/A DENSOMETER W/CHART RECORDER,/JOB,ZI	1	JOB		
ADC (AUTO DENSITY CTRL) SYS, /JOB,ZI	1	JOB		

Tools and Accessories

Type	Size	Qty	Make	Depth	Type	Size	Qty	Make	Depth	Type	Size	Qty	Make
Guide Shoe					Packer					Top Plug			
Float Shoe					Bridge Plug					Bottom Plug			
Float Collar					Retainer					SSR plug set			
Insert Float										Plug Container			
Stage Tool										Centralizers			

Miscellaneous Materials

Gelling Agt	Conc	Surfactant	Conc	Acid Type	Qty	Conc	%
Treatment Fld	Conc	Inhibitor	Conc	Sand Type	Size	Qty	

Fluid Data

Stage/Plug #: 1

Fluid #	Stage Type	Fluid Name	Qty	Qty uom	Mixing Density lbm/gal	Yield ft ³ /sk	Mix Fluid Gal/sk	Rate bbl/min	Total Mix Fluid Gal/sk
1	Water Spacer		20.00	bbl	8.33	.0	.0	.0	
2	MUD FLUSH III	MUD FLUSH III - SBM (528788)	20.00	bbl	8.4	.0	.0	.0	
3	Water Spacer		20.00	bbl	.	.0	.0	.0	
4	Lead Cement	VERSACEM (TM) SYSTEM (452010)	880.0	sacks	12.3	2.33	12.62		12.62
12.62 Gal		FRESH WATER							
5	Tail Cement	VERSACEM (TM) SYSTEM (452010)	135.0	sacks	12.8	2.07	10.67		10.67
10.67 Gal		FRESH WATER							
6	Displacement			bbl	.	.0	.0	.0	
7	Topout Cement	HALCEM (TM) SYSTEM (452986)	14.3	sacks	12.5	1.97	10.96		10.96
10.96 Gal		FRESH WATER							
Calculated Values		Pressures		Volumes					
Displacement		Shut In: Instant		Lost Returns		Cement Slurry		Pad	
Top Of Cement		5 Min		Cement Returns		Actual Displacement		Treatment	
Frac Gradient		15 Min		Spacers		Load and Breakdown		Total Job	
Rates									
Circulating		Mixing		Displacement		Avg. Job			
Cement Left In Pipe		Amount	0 ft	Reason	Shoe Joint				
Frac Ring # 1 @	ID	Frac ring # 2 @	ID	Frac Ring # 3 @	ID	Frac Ring # 4 @	ID		
The Information Stated Herein Is Correct				Customer Representative Signature					

The Road to Excellence Starts with Safety

Sold To #: 344034		Ship To #: 2826549		Quote #:		Sales Order #: 7840784	
Customer: OXY GRAND JUNCTION EBUSINESS				Customer Rep: Goddeyene, Andy			
Well Name: CC			Well #: 697-15-17A			API/UWI #: 05-045-19501	
Field: GRAND VALLEY		City (SAP): UNKNOWN		County/Parish: Garfield		State: Colorado	
Legal Description:							
Lat: N 39.53 deg. OR N 39 deg. 31 min. 46.211 secs.				Long: W 108.213 deg. OR W -109 deg. 47 min. 12.613 secs.			
Contractor: H&P 353			Rig/Platform Name/Num: H&P 353				
Job Purpose: Cement Surface Casing						Ticket Amount:	
Well Type: Development Well			Job Type: Cement Surface Casing				
Sales Person: DUNNING, DUSTIN			Srvc Supervisor: SMITH, DUSTIN			MBU ID Emp #: 418015	

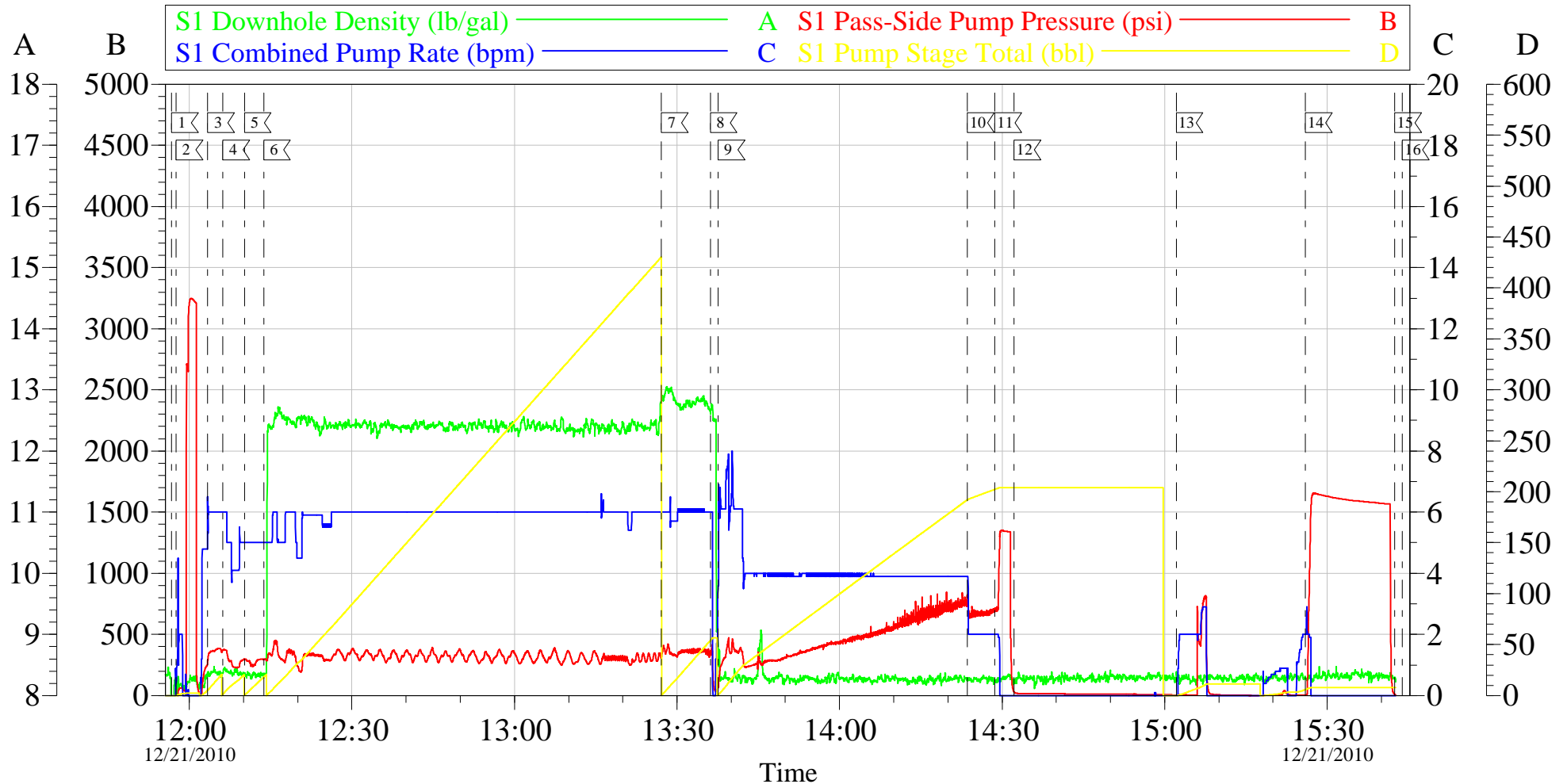
Activity Description	Date/Time	Cht #	Rate bbl/min	Volume bbl		Pressure psig		Comments
				Stage	Total	Tubing	Casing	
Call Out	12/20/2010 21:30							ELITE # 4
Depart Yard Safety Meeting	12/21/2010 00:00							ALL HES EMPLOYEES
Arrive At Loc	12/21/2010 06:00							ARRIVED ON LOCATION 1 1/2 HOURS EARLY DIDNT START CHARGING TIME UNTIL REQUESTED ON LOCATION TIME
Assessment Of Location Safety Meeting	12/21/2010 07:00							ALL HES EMPLOYEES
Pre-Rig Up Safety Meeting	12/21/2010 07:30							ALL HES EMPLOYEES
Rig-Up Equipment	12/21/2010 08:30							1 F-450 PICKUP 1 HT-400 PUMP TRUCK 1 FIELD STORAGE BIN 1 660 BULK TRUCK
Pre-Job Safety Meeting	12/21/2010 11:30							ALL HES EMPLOYEES AND RIG CREW
Rig-Up Completed	12/21/2010 11:55							RIG CIRCULATED FOR 1 HOUR PRIOR TO JOB
Start Job	12/21/2010 11:56							TD: 2730 TP: 2710 SJ: 53.82 MUD WT: 10.0 PPG 9 5/8 36# J-55 CSG 14 3/4 OH
Test Lines	12/21/2010 11:57					3260.0		PRESSURE TEST OK
Pump Spacer 1	12/21/2010 12:03		6	20	20		380.0	FRESH WATER
Pump Spacer 2	12/21/2010 12:06		6	20	20		340.0	MUD FLUSH III
Pump Spacer 1	12/21/2010 12:10		6	20	20		265.0	FRESH WATER

Activity Description	Date/Time	Cht #	Rate bbl/min	Volume bbl		Pressure psig		Comments
				Stage	Total	Tubing	Casing	
Pump Lead Cement	12/21/2010 12:13		6	365.2	365.2		360.0	880 SKS 12.3 PPG 2.33 YIELD 12.62 GAL/SK 7 BOXES TUFF FIBER
Pump Tail Cement	12/21/2010 13:27		6	48	48		375.0	135 SKS 12.8 PPG 2.07 YIELD 10.67 GAL/SK
Shutdown	12/21/2010 13:36							
Drop Plug	12/21/2010 13:36							PLUG AWAY NO PROBLEMS
Pump Displacement	12/21/2010 13:37		4	205.3	205.3		720.0	FRESH WATER
Slow Rate	12/21/2010 14:23		2	190.3	190.3		740.0	
Bump Plug	12/21/2010 14:28		2	205.3	205.3		1366.0	
Check Floats	12/21/2010 14:32							FLOATS HELD
Other	12/21/2010 15:02		2	10	10		730.0	10 BBLS SUGAR WATER TO CLEAR PARASITE STRING
Other	12/21/2010 15:25		1	3	3		1500.0	CASING TEST TO 1500 PSI HOLD FOR 30 MINUTES
End Job	12/21/2010 15:43							GOT CIRCULATION 350 BBLS INTO LEAD CEMENT. LOST RETURNS 50 BBLS INTO DISPLACEMENT HAD SPARATIC RETURNS UNTIL LAST 60 BBLS DISPLACEMENT NO RETURNS REST OF JOB
Other	12/21/2010 19:32		1	1	1			FILL LINES
Start Job	12/21/2010 19:32							TOPOUT # 1
Pump Cement	12/21/2010 19:33		1	2	2		10.0	MIXED 5 BBLS CEMENT PUMPED 2 BBLS TO TOP WELL OFF 14.3 SKS
Clean Lines	12/21/2010 19:42		2	2	2			CLEAN LINES
End Job	12/21/2010 19:43							CEMENT AT SURFACE NOT FALLING BACK
Pre-Rig Down Safety Meeting	12/21/2010 20:00							ALL HES EMPLOYEES

Activity Description	Date/Time	Cht #	Rate bbl/ min	Volume bbl		Pressure psig		Comments
				Stage	Total	Tubing	Casing	
Rig-Down Equipment	12/21/2010 21:00							
Pre-Convoy Safety Meeting	12/21/2010 22:00							ALL HES EMPLOYEES
Crew Leave Location	12/21/2010 22:30							THANK YOU FOR USING HALLIBURTON CEMENT DUSTIN SMITH AND CREW

OXY

CC 697-15-17A 9 5/8 SURFACE



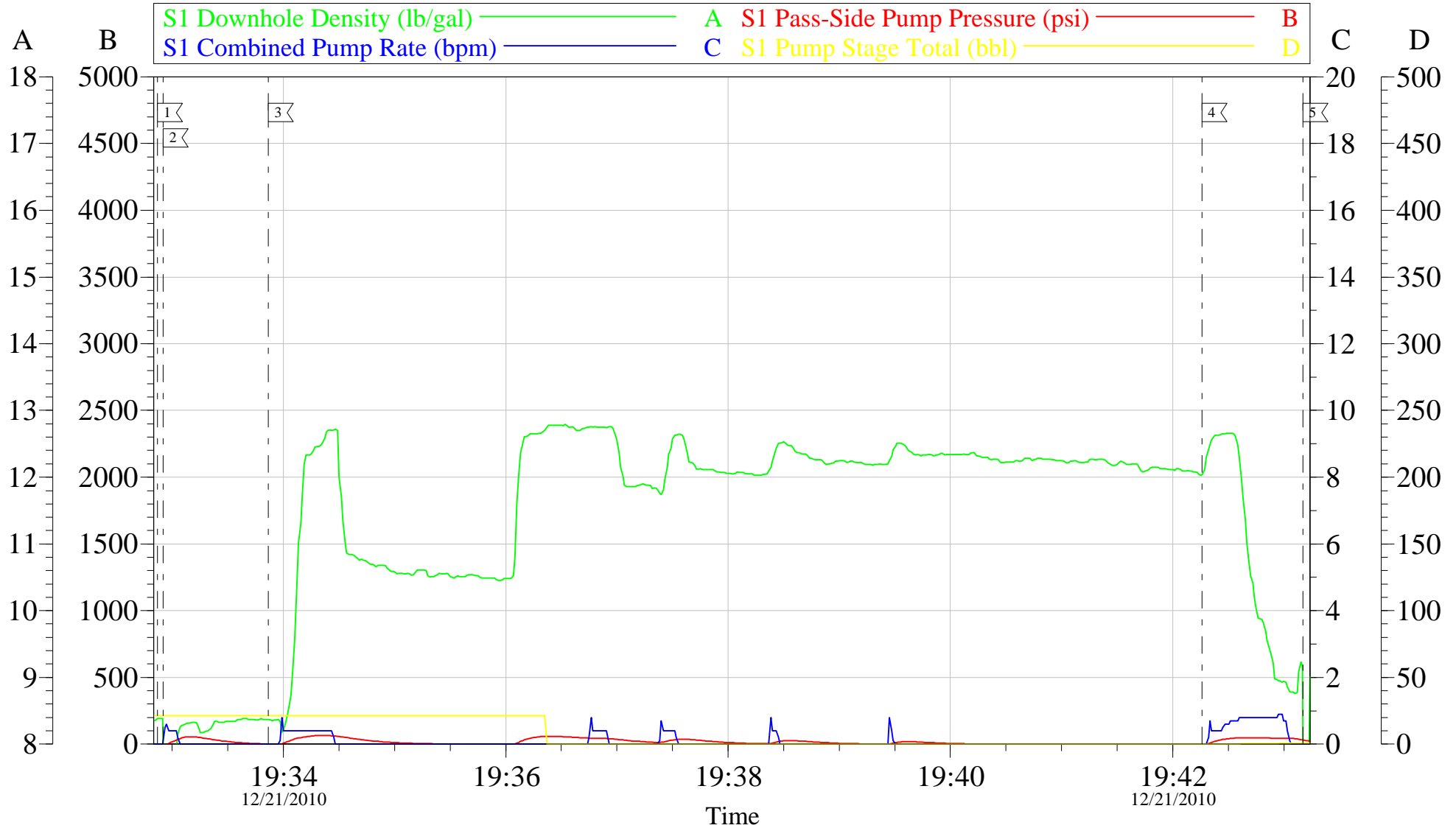
Local Event Log					
1	START JOB	11:56:41	2	TEST LINES	11:57:31
3	PUMP H2O	12:03:23	4	PUMP MUD FLUSH III	12:06:09
5	PUMP H2O	12:10:09	6	PUMP LEAD CEMENT	12:13:44
7	PUMP TAIL CEMENT	13:27:08	8	SHUTDOWN/ DROP PLUG	13:36:08
9	PUMP DISPLACEMENT	13:37:33	10	SLOW RATE	14:23:36
11	BUMP PLUG	14:28:39	12	CHECK FLOATS	14:32:14
13	CLEAR PARASITE STRING	15:02:07	14	CASING TEST	15:25:58
15	RELEASE PRESSURE	15:42:27	16	END JOB	15:43:51

Customer: OXY	Job Date: 21-Dec-2010	Sales Order #: 7840784
Well Description: CC 697-15-17A	Job Type: 9 5/8 SURFACE	ADC Used: YES
Company Rep:	Cement Supervisor: DUSTIN SMITH	Elite #: 4 SHANE JENSEN

OptiCem v6.4.8
21-Dec-10 15:42

OXY

CC 697-15-17A TOP OUT#1



Local Event Log					
1	START JOB	19:32:52	2	FILL LINES	19:32:55
3	PUMP CEMENT	19:33:52			
4	CLEAN LINES	19:42:16	5	END JOB	19:43:10

Customer: OXY	Job Date: 21-Dec-2010	Sales Order #: 7840784
Well Description: CC 697-15-17A	Job Type: TOP OUT #1	ADC Used: YES
Company Rep: TERRY	Cement Supervisor: DUSTIN SMITH	Elite #:4 SHANE JENSEN