
OXY GRAND JUNCTION EBUSINESS

**CC 697-09-56B
GRAND VALLEY
Garfield County , Colorado**

Cement Surface Casing
08-Jan-2011

Post Job Summary

The Road to Excellence Starts with Safety

Sold To #: 344034	Ship To #: 2829645	Quote #:	Sales Order #: 7856391
Customer: OXY GRAND JUNCTION EBUSINESS	Customer Rep: COOMBS, HENRY		
Well Name: CC	Well #: 697-09-56B	API/UWI #: 05-045-17692	
Field: GRAND VALLEY	City (SAP): PARACHUTE	County/Parish: Garfield	State: Colorado
Lat: N 39.53 deg. OR N 39 deg. 31 min. 46.402 secs.	Long: W 108.213 deg. OR W -109 deg. 47 min. 12.811 secs.		
Contractor: H&P 353	Rig/Platform Name/Num: H&P 353		
Job Purpose: Cement Surface Casing			
Well Type: Development Well	Job Type: Cement Surface Casing		
Sales Person: DUNNING, DUSTIN	Srv Supervisor: LEIST, JAMES	MBU ID Emp #: 362787	

Job Personnel

HES Emp Name	Exp Hrs	Emp #	HES Emp Name	Exp Hrs	Emp #	HES Emp Name	Exp Hrs	Emp #
JENSEN, SHANE Lynn	5	441759	LEIST, JAMES R	5	362787	SANCHEZ, ERIC David	5	487084
ZUMWALT, ORVILLE Raymond	5	398157						

Equipment

HES Unit #	Distance-1 way	HES Unit #	Distance-1 way	HES Unit #	Distance-1 way	HES Unit #	Distance-1 way
10025118	120 mile	10616651C	120 mile	10741259	120 mile	10995025	120 mile
11259883	120 mile	11463279	120 mile				

Job Hours

Date	On Location Hours	Operating Hours	Date	On Location Hours	Operating Hours	Date	On Location Hours	Operating Hours
1-8-11	10	5						

TOTAL	Total is the sum of each column separately							
-------	--	--	--	--	--	--	--	--

Job

Job Times

Formation Name	Top	Bottom	Called Out	Date	Time	Time Zone
Formation Depth (MD)			On Location	07 - Jan - 2011	21:00	MST
Form Type		BHST	Job Started	08 - Jan - 2011	06:00	MST
Job depth MD	2675. ft	Job Depth TVD	Job Completed	08 - Jan - 2011	12:50	MST
Water Depth		Wk Ht Above Floor	Departed Loc	08 - Jan - 2011	17:47	MST
Perforation Depth (MD)	From	To		08 - Jan - 2011	20:30	MST

Well Data

Description	New / Used	Max pressure psig	Size in	ID in	Weight lbm/ft	Thread	Grade	Top MD ft	Bottom MD ft	Top TVD ft	Bottom TVD ft
-------------	------------	-------------------	---------	-------	---------------	--------	-------	-----------	--------------	------------	---------------

Sales/Rental/3rd Party (HES)

Description	Qty	Qty uom	Depth	Supplier
R/A DENSOMETER W/CHART RECORDER,/JOB,ZI	1	JOB		
PORT. DATA ACQUIS. W/OPTICEM RT W/HES	1	EA		
PLUG,CMTG,TOP,9 5/8,HWE,8.16 MIN/9.06 MA	1	EA		

Tools and Accessories

Type	Size	Qty	Make	Depth	Type	Size	Qty	Make	Depth	Type	Size	Qty	Make
Guide Shoe					Packer					Top Plug	9.625	1	
Float Shoe					Bridge Plug					Bottom Plug			
Float Collar					Retainer					SSR plug set			
Insert Float										Plug Container	9.625	1	
Stage Tool										Centralizers			

Miscellaneous Materials

Gelling Agt	Conc	Surfactant	Conc	Acid Type	Qty	Conc	%
Treatment Fld	Conc	Inhibitor	Conc	Sand Type	Size		Qty

Fluid Data									
Stage/Plug #: 1									
Fluid #	Stage Type	Fluid Name	Qty	Qty uom	Mixing Density lbm/gal	Yield ft ³ /sk	Mix Fluid Gal/sk	Rate bbl/min	Total Mix Fluid Gal/sk
1	Water Spacer		20.00	bbl	8.33	.0	.0	.0	
2	Gel Water Spacer		20.00	bbl	.	.0	.0	.0	
3	Water Spacer		20.00	bbl	.	.0	.0	.0	
4	Lead Cement	VERSACEM (TM) SYSTEM (452010)	800.0	sacks	12.3	2.33	12.62		12.62
5	Tail Cement	VERSACEM (TM) SYSTEM (452010)		sacks	12.8	2.07	10.67		10.67
6	Displacement		202.00	bbl	.	.0	.0	.0	
Calculated Values		Pressures		Volumes					
Displacement	202	Shut In: Instant		Lost Returns	65	Cement Slurry	377	Pad	
Top Of Cement	SURFACE	5 Min		Cement Returns	200	Actual Displacement	202	Treatment	
Frac Gradient		15 Min		Spacers	60	Load and Breakdown		Total Job	
Rates									
Circulating	5	Mixing		6	Displacement	6	Avg. Job		4
Cement Left In Pipe	Amount	50.5 ft	Reason	Shoe Joint					
Frac Ring # 1 @	ID	Frac ring # 2 @	ID	Frac Ring # 3 @	ID	Frac Ring # 4 @	ID		
The Information Stated Herein Is Correct				Customer Representative Signature					

The Road to Excellence Starts with Safety

Sold To #: 344034		Ship To #: 2829645		Quote #:		Sales Order #: 7856391	
Customer: OXY GRAND JUNCTION EBUSINESS				Customer Rep: COOMBS, HENRY			
Well Name: CC			Well #: 697-09-56B			API/UWI #: 05-045-17692	
Field: GRAND VALLEY		City (SAP): PARACHUTE		County/Parish: Garfield		State: Colorado	
Legal Description:							
Lat: N 39.53 deg. OR N 39 deg. 31 min. 46.402 secs.				Long: W 108.213 deg. OR W -109 deg. 47 min. 12.811 secs.			
Contractor: H&P 353			Rig/Platform Name/Num: H&P 353				
Job Purpose: Cement Surface Casing						Ticket Amount:	
Well Type: Development Well			Job Type: Cement Surface Casing				
Sales Person: DUNNING, DUSTIN			Srvc Supervisor: LEIST, JAMES			MBU ID Emp #: 362787	

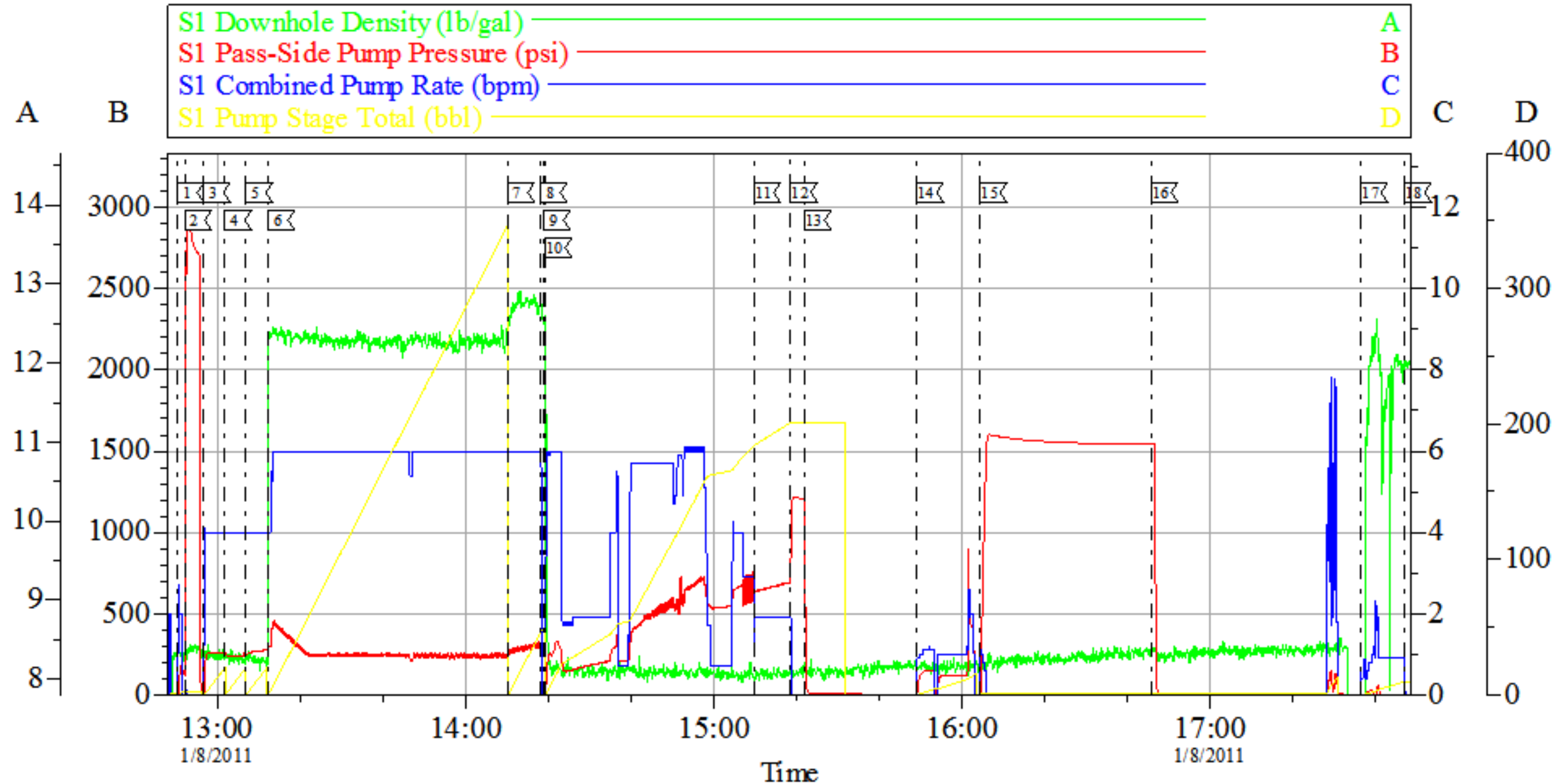
Activity Description	Date/Time	Cht #	Rate bbl/min	Volume bbl		Pressure psig		Comments
				Stage	Total	Tubing	Casing	
Call Out	01/07/2011 21:00							TP-2675, TD-2700, S.J.-50.5, HOLE-14 3/4, MUD#-9.4, YP-15, PV-20, TEMP-120
Pre-Convoy Safety Meeting	01/08/2011 00:30							WITH ALL HES PERSONNEL
Crew Leave Yard	01/08/2011 01:00							RIG CIRULATED FOR 1 HOUR PRIOR TO CMT JOB AT 5 BBL/MIN WITH 100 PSI
Arrive At Loc	01/08/2011 06:00							RIG RUNNING CASING, HES SPOTTED EQUIP. AND RIG UP WHAT WE COULD WITH OUT ENTERING RED ZONE
Assessment Of Location Safety Meeting	01/08/2011 07:00							WITH ALL HES PERSONNEL
Pre-Rig Up Safety Meeting	01/08/2011 07:10							WITH ALL HES PERSONNEL
Rig-Up Completed	01/08/2011 08:30							RAN MANIFOLD TO PUMP PARISITE STRING AND TAKE THE RETURNS FROM THE CASING STRING
Pre-Job Safety Meeting	01/08/2011 12:30							WITH ALL ON LOCATION PERSONNEL
Start Job	01/08/2011 12:50							LOST CIRULATION FOR 65 BBLS REST OF JOB HAD GOOD CIRULATION THROUGHOUT, NO PIPE MOVEMENT DURING JOB

Activity Description	Date/Time	Cht #	Rate bbl/min	Volume bbl		Pressure psig		Comments
				Stage	Total	Tubing	Casing	
Pressure Test	01/08/2011 12:52							2900 PSI
Pump Spacer 1	01/08/2011 12:56		4	20			260.0	FRESH WATER
Pump Spacer	01/08/2011 13:01		4	20			237.0	GEL SPACER
Pump Spacer	01/08/2011 13:06		4	20			220.0	FRESH WATER
Pump Lead Cement	01/08/2011 13:12		6	331			277.0	800 SKS, 12.3 PPG, 2.33 FT3/SK, 12.62 GAL/SK, NO TUFF FIBER ADDED PER COMPANY REP
Pump Tail Cement	01/08/2011 14:10		6	46			300.0	125 SKS, 12.8 PPG, 2.07 FT3/SK, 10.67 GAL/SK
Shutdown	01/08/2011 14:18							
Drop Top Plug	01/08/2011 14:18							AWAY
Pump Displacement	01/08/2011 14:19		6	202			660.0	FRESH WATER, 200 BBLs CMT TO SURFACE
Slow Rate	01/08/2011 15:09		2	192			640.0	TO BUMP PLUG
Bump Plug	01/08/2011 15:18		2	202			670.0	PLUG BUMPED
Check Floats	01/08/2011 15:21							THE FLOATS ARE HOLDING
Other	01/08/2011 15:49							PUMPED PARISITE STRING, WITH SUGAR WATER
Other	01/08/2011 16:04						1500.0	CASING TEST FOR 30 MIN. 1500 PSI
Other	01/08/2011 17:36		1	6			34.0	PUMP TOP OUT CMT 12.5 PPG, CMT ALREADY PAID FOR
End Job	01/08/2011 17:47							
Pre-Rig Down Safety Meeting	01/08/2011 18:00							WITH ALL HES PERSONNEL
Rig-Down Completed	01/08/2011 19:30							
Pre-Convoy Safety Meeting	01/08/2011 20:00							WITH ALL HES PERSONNEL
Crew Leave Location	01/08/2011 20:30							

Activity Description	Date/Time	Cht #	Rate bbl/ min	Volume bbl		Pressure psig		Comments
				Stage	Total	Tubing	Casing	
Comment	01/08/2011 20:30							THANKYOU FOR USING HALLIBURTON CEMENT, JAMES LEIST AND CREW

OXY

9 5/8 SURFACE CASING



Local Event Log								
1	START JOB	12:50:17	2	PRESSURE TEST	12:52:05	3	PUMP H2O SPACER	12:56:38
4	PUMP GEL SPACER	13:01:47	5	PUMP H2O SPACER	13:06:54	6	PUMP LEAD CMT	13:12:15
7	PUMP TAIL CMT	14:10:11	8	SHUTDOWN	14:18:07	9	DROP TOP PLUG	14:18:53
10	PUMP DISPLACEMENT	14:19:18	11	SLOW RATE	15:09:43	12	BUMP PLUG	15:18:37
13	CHECK FLOATS	15:21:58	14	PUMP PARISITE STRING	15:49:04	15	CASING TEST	16:04:26
16	RELEASE PSI	16:45:46	17	PUMP TOP OUT	17:36:30	18	END JOB	17:47:03

Customer: OXY
Well Description: CC 697-09-56B
Company Rep: HENRY COOMBS

Job Date: 08-Jan-2011
Job Type: SURFACE
Cement Supervisor: JAMES LEIST

Sales Order #: 7856391
ADC Used: YES
Elite #3 SHANE JENSEN

HALLIBURTON
OptiCem v6.3.4
08-Jan-11 18:15