

**CONFIDENTIALITY NOTES:**  
The information contained in this plat is legally privileged and confidential information intended only for the use of the recipients. If you are not the intended recipients, you are hereby notified that any use, dissemination, distribution or copying of this information is strictly prohibited.

**WILLIAM H. SMITH & ASSOCIATES P.C.**  
SURVEYING CONSULTANTS  
450 EAST SECOND NORTH PHONE: 307-875-3638  
GREEN RIVER, WY 307-875-3639  
www.whsmithpc.com

DRAWN BY: CED	CHECKED BY: WHD
PROJECT NO: 762321M	JOB NO: 2011001
REVISIONS:	

**LEGEND**

400' PERIMETER

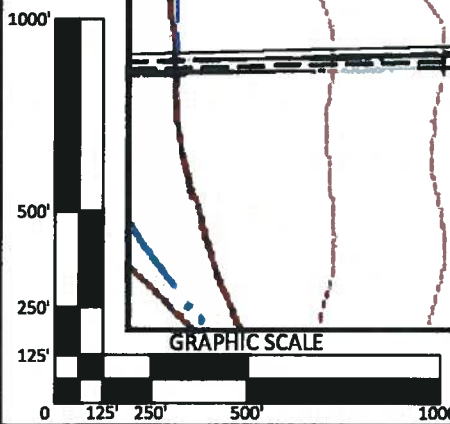
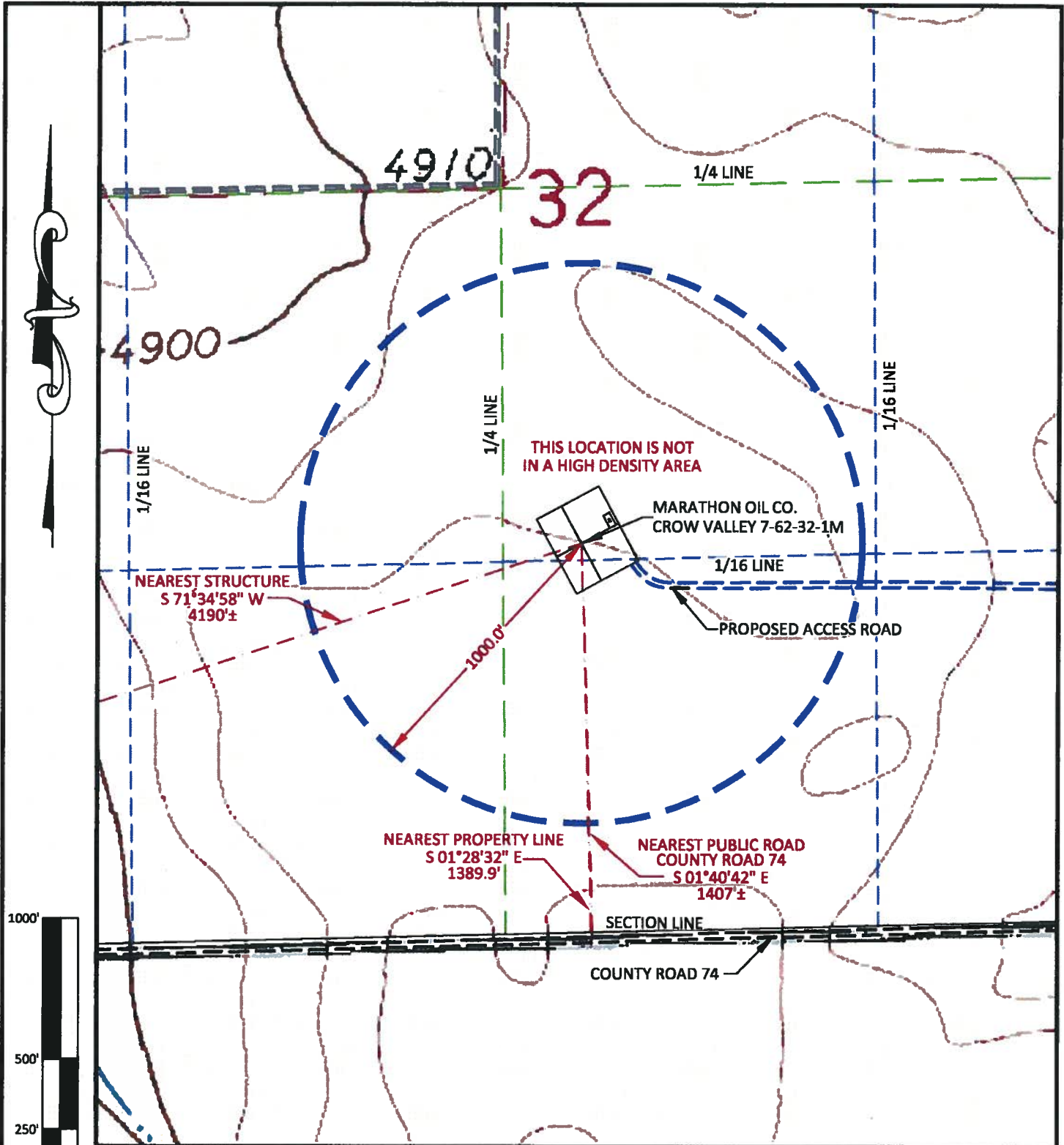
PROPOSED ACCESS

**LOCATION:**  
CROW VALLEY  
7-62-32-1M  
WITHIN THE NW/4  
SE/4 SECTION 32,  
T 7 N, R 62 W,  
6TH PM.  
WELD COUNTY,  
COLORADO

**MARATHON OIL COMPANY**  
PO BOX 3128, HOUSTON TX, 77253  
5555 SAN FELIPE, HOUSTON TX, 77056

**LOCATION DRAWING**

SCALE: 1"=200'	EXHIBIT "C"
DATE: 02/27/2011	SHEET 2 OF 10



**CONFIDENTIALITY NOTES:**  
 The information contained in this plat is legally privileged and confidential information intended only for the use of the recipients. If you are not the intended recipients, you are hereby notified that any use, dissemination, distribution or copying of this information is strictly prohibited.

**WILLIAM H. SMITH & ASSOCIATES P.C.**  
 SURVEYING CONSULTANTS  
 30 EAST SECOND NORTH GREEN RIVER, WY  
 PHONE: 307-875-3638 307-875-3639  
 www.wsmithpc.com

DRAWN BY: CED	CHECKED BY: WHD
PROJECT NO: 762321M	JOB NO: 2011001
REVISIONS:	

**LEGEND**

1000' RADIUS	
PROPOSED ACCESS	
EXISTING 2-TRACK	

**LOCATION:**  
 CROW VALLEY 7-62-32-1M  
 WITHIN THE NW/4 SE/4 SECTION 32,  
 T 7 N, R 62 W,  
 6TH PM.  
 WELD COUNTY,  
 COLORADO

**MARATHON OIL COMPANY**  
 PO BOX 3128, HOUSTON TX, 77253  
 5555 SAN FELIPE, HOUSTON TX, 77056

**CULTURE MAP**

SCALE: 1"=500'	EXHIBIT "H"
DATE: 02/27/2011	SHEET 7 OF 10