

---

# **OXY GRAND JUNCTION EBUSINESS**

---

**CC 697-15-09B  
GRAND VALLEY  
Garfield County , Colorado**

**Cement Surface Casing  
05-Jan-2011**

**Post Job Report**

## The Road to Excellence Starts with Safety

<b>Sold To #:</b> 344034		<b>Ship To #:</b> 2828801		<b>Quote #:</b>		<b>Sales Order #:</b> 7841912	
<b>Customer:</b> OXY GRAND JUNCTION EBUSINESS				<b>Customer Rep:</b> MCOOMBS, HENRY			
<b>Well Name:</b> CC			<b>Well #:</b> 697-15-09B			<b>API/UWI #:</b> 05-045-18055	
<b>Field:</b> GRAND VALLEY		<b>City (SAP):</b>		<b>County/Parish:</b> Garfield		<b>State:</b> Colorado	
<b>Lat:</b> N 39.529 deg. OR N 39 deg. 31 min. 46.114 secs.				<b>Long:</b> W 108.213 deg. OR W -109 deg. 47 min. 12.386 secs.			
<b>Contractor:</b> H&P Drilling			<b>Rig/Platform Name/Num:</b> H&P 353				
<b>Job Purpose:</b> Cement Surface Casing							
<b>Well Type:</b> Development Well			<b>Job Type:</b> Cement Surface Casing				
<b>Sales Person:</b> DUNNING, DUSTIN			<b>Srvc Supervisor:</b> MUHLESTEIN, RYAN			<b>MBU ID Emp #:</b> 453609	

### Job Personnel

HES Emp Name	Exp Hrs	Emp #	HES Emp Name	Exp Hrs	Emp #	HES Emp Name	Exp Hrs	Emp #
BROWN, TRAVIS A	12.5	396848	HAMMOND, ANSON Perry	12.5	421370	MUHLESTEIN, RYAN Herrick	12.5	453609
PRUITT, BRAD	12.5	475748	SANCHEZ, ERIC David	12.5	487084	WELLS, DOUGLAS Bruce	12.5	487783

### Equipment

HES Unit #	Distance-1 way	HES Unit #	Distance-1 way	HES Unit #	Distance-1 way	HES Unit #	Distance-1 way
10867304	120 mile	10897925	120 mile	10951244	120 mile	11360871	120 mile
11463279	120 mile	11542767	120 mile				

### Job Hours

Date	On Location Hours	Operating Hours	Date	On Location Hours	Operating Hours	Date	On Location Hours	Operating Hours
1/5/2011	12.5	10						

<b>TOTAL</b>	Total is the sum of each column separately							
--------------	--	--	--	--	--	--	--	--

### Job

Formation Name	Top	Bottom	Called Out	Date	Time	Time Zone
Formation Depth (MD)			On Location	04 - Jan - 2011	18:00	MST
Form Type		BHST	Job Started	05 - Jan - 2011	02:30	MST
Job depth MD	2735. ft	Job Depth TVD	Job Completed	05 - Jan - 2011	06:11	MST
Water Depth		Wk Ht Above Floor	Departed Loc	05 - Jan - 2011	12:58	MST
Perforation Depth (MD)	From	To		05 - Jan - 2011	15:00	MST

### Well Data

Description	New / Used	Max pressure psig	Size in	ID in	Weight lbm/ft	Thread	Grade	Top MD ft	Bottom MD ft	Top TVD ft	Bottom TVD ft
14 3/4" Open Hole				14.75				.	2735.		
9 5/8" Surface Casing	Unknown		9.625	8.921	36.			.	2714.		

### Sales/Rental/3<sup>rd</sup> Party (HES)

Description	Qty	Qty uom	Depth	Supplier
PLUG,CMTG, TOP, 9 5/8, HWE, 8.16 MIN/9.06 MA	1	EA		
R/A DENSOMETER W/CHART RECORDER, /JOB, ZI	1	JOB		
PORT. DATA ACQUIS. W/OPTICEM RT W/HES	1	EA		
ADC (AUTO DENSITY CTRL) SYS, /JOB, ZI	1	JOB		

### Tools and Accessories

Type	Size	Qty	Make	Depth	Type	Size	Qty	Make	Depth	Type	Size	Qty	Make
Guide Shoe					Packer					Top Plug	9.625	1	HES
Float Shoe					Bridge Plug					Bottom Plug			
Float Collar					Retainer					SSR plug set			
Insert Float										Plug Container	9.625	1	HES
Stage Tool										Centralizers			

Miscellaneous Materials													
Gelling Agt		Conc		Surfactant		Conc		Acid Type		Qty		Conc	%
Treatment Fld		Conc		Inhibitor		Conc		Sand Type		Size		Qty	
Fluid Data													
Stage/Plug #: 1													
Fluid #	Stage Type	Fluid Name			Qty	Qty uom	Mixing Density lbm/gal	Yield ft3/sk	Mix Fluid Gal/sk	Rate bbl/min	Total Mix Fluid Gal/sk		
1	Water Spacer				20.00	bbl	8.33	.0	.0	2.0			
2	Gel Spacer				20.00	bbl	8.4	.0	.0	2.0			
3	Water Spacer				20.00	bbl	8.4	.0	.0	2.0			
4	VersaCem Lead Cement	VERSACEM (TM) SYSTEM (452010)			805.0	sacks	12.3	2.33	12.62	5.0	12.62		
	12.62 Gal	FRESH WATER											
5	VersaCem Tail Cement	VERSACEM (TM) SYSTEM (452010)			125.0	sacks	12.8	2.07	10.67	6.0	10.67		
	10.67 Gal	FRESH WATER											
6	Displacement				206.00	bbl	8.4	.0	.0	5.0			
7	Topout Cement	HALCEM (TM) SYSTEM (452986)				sacks	12.5	1.97	10.96		10.96		
	10.96 Gal	FRESH WATER											
Calculated Values		Pressures			Volumes								
Displacement	206	Shut In: Instant			Lost Returns		0	Cement Slurry		381	Pad		
Top Of Cement	SURFACE	5 Min			Cement Returns		170	Actual Displacement		206	Treatment		
Frac Gradient		15 Min			Spacers		60	Load and Breakdown			Total Job		646
Rates													
Circulating	4	Mixing			4	Displacement		4	Avg. Job		4		
Cement Left In Pipe	Amount	43.5 ft	Reason		Shoe Joint								
Frac Ring # 1 @	ID	Frac ring # 2 @	ID	Frac Ring # 3 @	ID	Frac Ring # 4 @	ID						
The Information Stated Herein Is Correct					Customer Representative Signature								

*The Road to Excellence Starts with Safety*

<b>Sold To #:</b> 344034	<b>Ship To #:</b> 2828801	<b>Quote #:</b>	<b>Sales Order #:</b> 7841912
<b>Customer:</b> OXY GRAND JUNCTION EBUSINESS		<b>Customer Rep:</b> MCOOMBS, HENRY	
<b>Well Name:</b> CC	<b>Well #:</b> 697-15-09B	<b>API/UWI #:</b> 05-045-18055	
<b>Field:</b> GRAND VALLEY	<b>City (SAP):</b>	<b>County/Parish:</b> Garfield	<b>State:</b> Colorado
<b>Legal Description:</b>			
<b>Lat:</b> N 39.529 deg. OR N 39 deg. 31 min. 46.114 secs.		<b>Long:</b> W 108.213 deg. OR W -109 deg. 47 min. 12.386 secs.	
<b>Contractor:</b> H&P Drilling		<b>Rig/Platform Name/Num:</b> H&P 353	
<b>Job Purpose:</b> Cement Surface Casing			<b>Ticket Amount:</b>
<b>Well Type:</b> Development Well		<b>Job Type:</b> Cement Surface Casing	
<b>Sales Person:</b> DUNNING, DUSTIN		<b>Srv Supervisor:</b> MUHLESTEIN, RYAN	<b>MBU ID Emp #:</b> 453609

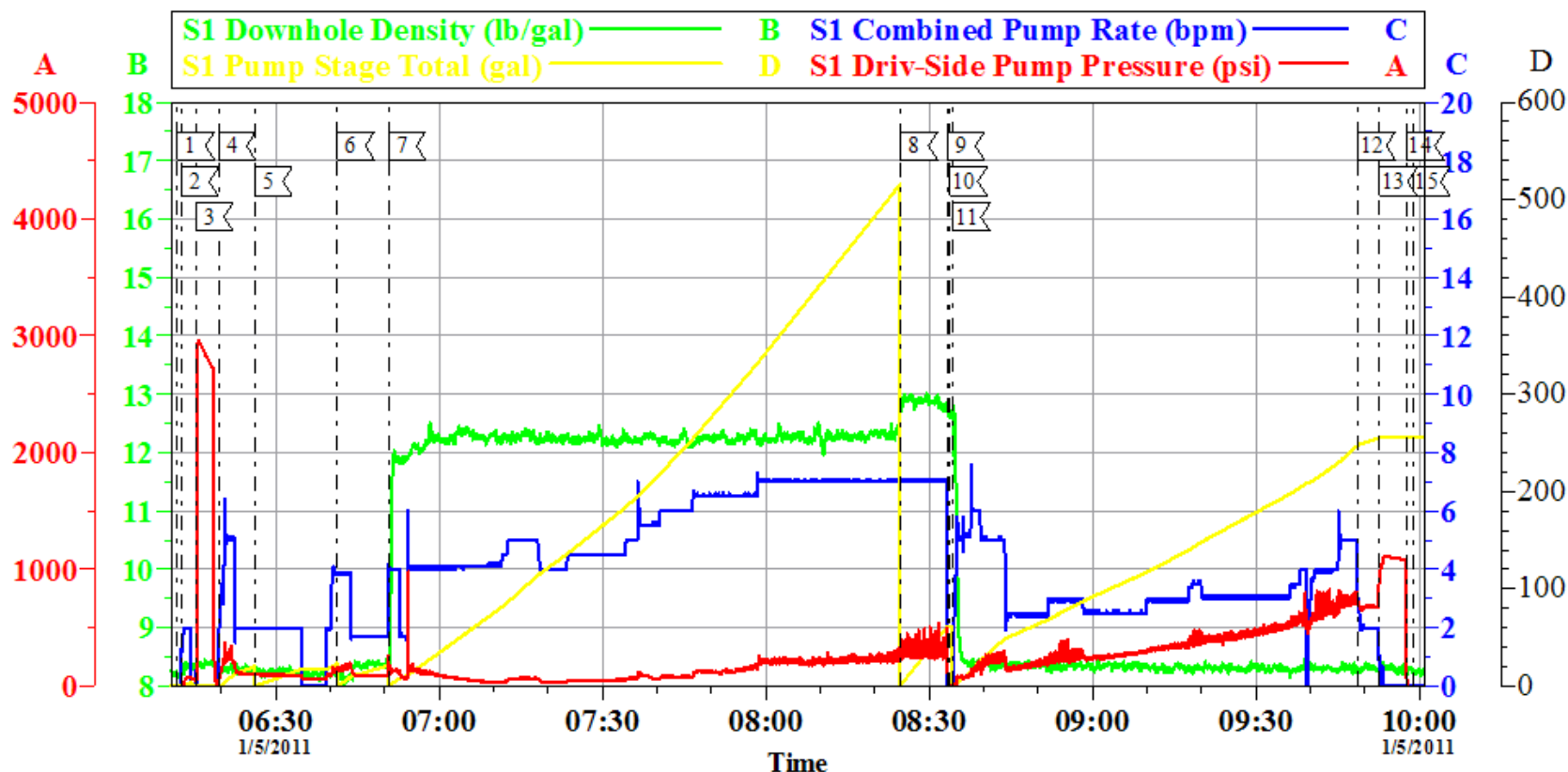
Activity Description	Date/Time	Cht #	Rate bbl/min	Volume bbl		Pressure psig		Comments
				Stage	Total	Tubing	Casing	
Call Out	01/04/2011 18:00							
Pre-Convoy Safety Meeting	01/04/2011 20:45							ALL HES EE'S
Arrive At Loc	01/05/2011 02:30							RIG STILL RUNNING
Pre-Rig Up Safety Meeting	01/05/2011 02:45							ALL HES EE'S
Rig-Up Equipment	01/05/2011 03:00							1 HT 400 PUMP, 1 1600 BULK STORAGE BIN, 1 660 BULK TRAILER, 1 F-450 PICK-UP, 1 PLUG CONTAINER, LINES TO FLOOR AND PIT
Pre-Job Safety Meeting	01/05/2011 05:45							ALL HES EE'S, RIG CREW AND CO REP
Start Job	01/05/2011 06:11							TD-2735' TP-2714' SJ-43.5' CASING 9 5/8" 36# J-55 HOLE 14 3/4"
Pump Water	01/05/2011 06:12		2	2			95.0	FRESH H2O TO FILL LINES
Test Lines	01/05/2011 06:15					2965.0		HELD PSI FOR 2 MIN, NO LEAKS
Pump Spacer 1	01/05/2011 06:19		2	20			300.0	FRESH H2O
Pump Spacer 2	01/05/2011 06:26		2	20			110.0	LGC GEL SPACER
Pump Spacer 1	01/05/2011 06:41		2	20			115.0	FRESH H2O
Pump Lead Cement	01/05/2011 06:50		5	334			280.0	805 SKS 12.3 PPG 2.33 FT3/SK 12.62 GAL/SK, 7 BOXES TUFF FIBER
Pump Tail Cement	01/05/2011 08:24		6	47			350.0	125 SKS 12.8 PPG 2.07 FT3/SK 10.67 GAL/SK
Shutdown	01/05/2011 08:33							

Activity Description	Date/Time	Cht #	Rate bbl/ min	Volume bbl		Pressure psig		Comments
				Stage	Total	Tubing	Casing	
Drop Top Plug	01/05/2011 08:33							VERIFY PLUG LAUNCHED
Pump Displacement	01/05/2011 08:34		4	206			780.0	FRESH H2O DISPLACEMENT, CEMENT RETURNS TO SURFACE AT 37 BBLS AWAY, 169 BBLS CMT TO SURFACE, RIG CELLAR PUMPS WERE NOT KEEPING UP
Slow Rate	01/05/2011 09:48		2	196			680.0	
Bump Plug	01/05/2011 09:52		2	206			690.0	PLUG BUMPED AT 690 PSI PRESSURED UP TO 1130 PSI
Check Floats	01/05/2011 09:57							FLOATS HELD, 1 BBL BACK TO PUMP TRUCK
End Job	01/05/2011 09:58							GOOD RETURNS THROUGHT JOB, RIG CIRCULATE 3 HRS PRIOR TO CMT, MUD 9.1#, FV 39, PV 11, YP 8, TEMP 120, 120 LBS SUGAR USED
Start Job	01/05/2011 10:22							
Pump Water	01/05/2011 10:23		2	20			770.0	PUMP SUGAR WATER THRU PARASITE LINE, CIRCULATED AT 770 PSI, FLOW NOTED TO SURFACE AT 7 BBLS AWAY
Shutdown	01/05/2011 10:33							
Pressure Test	01/05/2011 10:47		2	4			1780. 0	PRESSURE TEST CASING PER CO REP REQUEST, HELD PRESSURE 30 MINS
Other	01/05/2011 11:48							SWAP GROUND MANIFOLD TO WASH PUMP TRUCK TO PIT. PASS SIDE PRESSURE TRANSDUCER SHUT IN AT WELL SIDE OF MANIFOLD
Release Casing Pressure	01/05/2011 12:56							

Activity Description	Date/Time	Cht #	Rate bbl/ min	Volume bbl		Pressure psig		Comments
				Stage	Total	Tubing	Casing	
End Job	01/05/2011 12:58							
Pre-Rig Down Safety Meeting	01/05/2011 13:15							ALL HES EE'S
Rig-Down Equipment	01/05/2011 13:30							
Pre-Convoy Safety Meeting	01/05/2011 14:45							ALL HES EE'S
Crew Leave Location	01/05/2011 15:00							THANKS FOR USING HALLIBURTON CEMENT, RYAN MUHLESTEIN AND CREW

# OXY

## CC 697-15-09B 9 5/8" SURFACE



### Local Event Log

1 START JOB	06:11:58	2 FILL LINES	06:12:39	3 TEST LINES	06:15:20
4 PUMP H2O SPACER	06:19:31	5 PUMP LGC SPACER	06:26:11	6 PUMP H2O SPACER	06:41:19
7 PUMP LEAD CMT	06:50:42	8 PUMP TAIL CMT	08:24:43	9 SHUT DOWN	08:33:22
10 DROP PLUG	08:33:47	11 PUMP DISPLACEMENT	08:34:25	12 SLOW RATE	09:48:50
13 BUMP PLUG	09:52:46	14 CHECK FLOATS	09:57:43	15 END JOB	09:58:51

Customer: OXY  
Well Description: CC 697-15-09B  
Customer Rep: CODY LONG

Job Date: 05-Jan-2011  
Job type: SURFACE  
Service Supervisor: RYAN MUHLESTEIN

Sales Order #: 7841912  
ADC Used: YES  
Operator/ Pump: TRAVIS BROWN/ ELITE1

OptiCem v6.4.6  
05-Jan-11 10:17