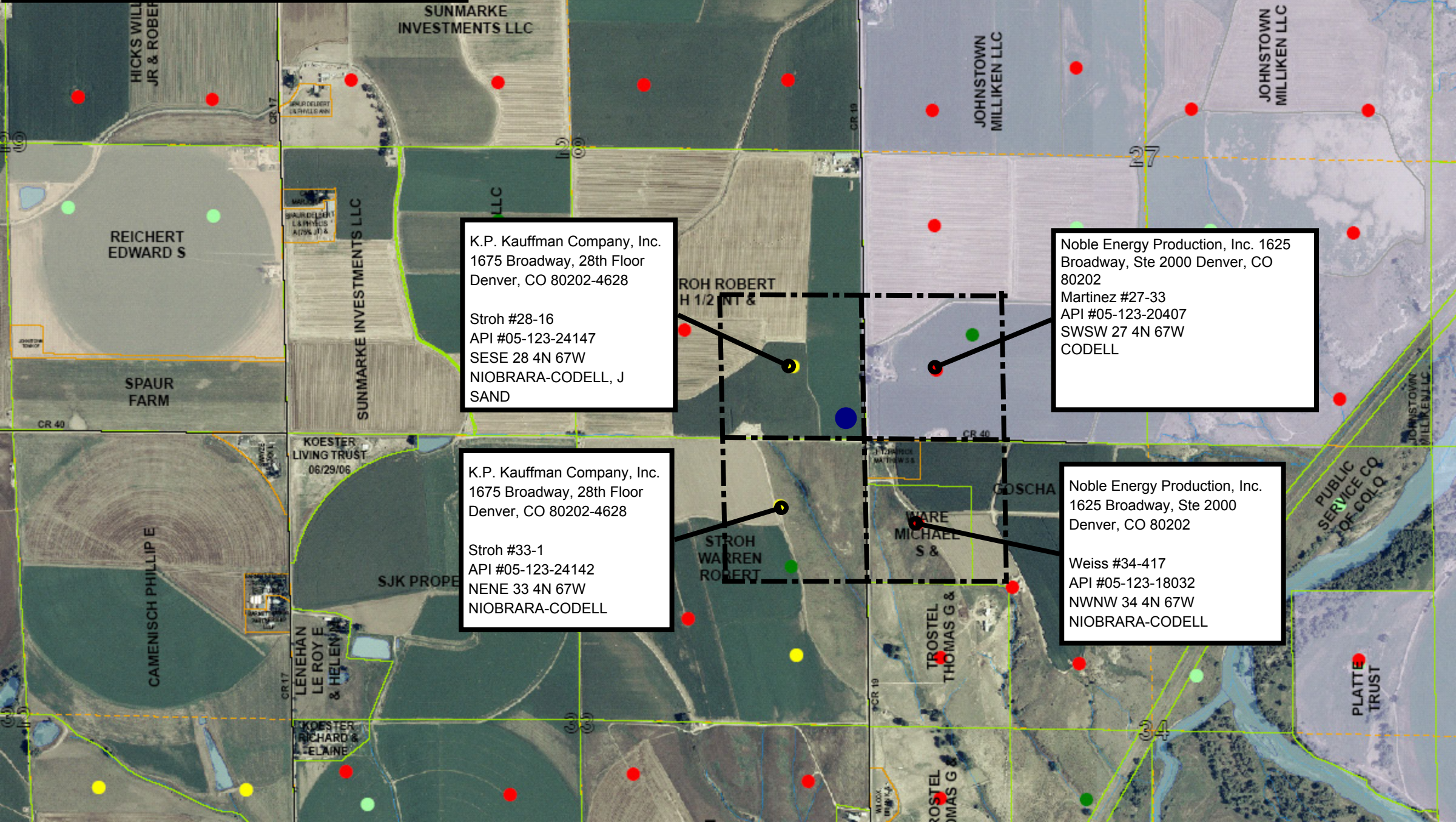


**STROH #38-28R UNIT PLAT**  
Outlined by black hashmarked lines and to include lands located in:  
SE/4SE/4 Sec. 28, T4N, R67W,  
NE/4NE/4 Sec. 33, T4N, R67W,  
SW/4SW/4 Sec. 27, T4N, R67W, and  
NW/4NW/4 Sec. 34, T4N, R67W, Weld County, CO.  
Surface Location: 160' FSL AND 200' FEL Sec. 28.  
Bottom Hole Location: 160' FSL and 200' FEL Sec. 28.



K.P. Kauffman Company, Inc.  
1675 Broadway, 28th Floor  
Denver, CO 80202-4628

Stroh #28-16  
API #05-123-24147  
SESE 28 4N 67W  
NIOBRARA-CODELL, J  
SAND

Noble Energy Production, Inc. 1625  
Broadway, Ste 2000 Denver, CO  
80202  
Martinez #27-33  
API #05-123-20407  
SWSW 27 4N 67W  
CODELL

K.P. Kauffman Company, Inc.  
1675 Broadway, 28th Floor  
Denver, CO 80202-4628

Stroh #33-1  
API #05-123-24142  
NENE 33 4N 67W  
NIOBRARA-CODELL

Noble Energy Production, Inc.  
1625 Broadway, Ste 2000  
Denver, CO 80202

Weiss #34-417  
API #05-123-18032  
NWNW 34 4N 67W  
NIOBRARA-CODELL