
KINDER MORGAN INC

Sand Canyon #8

Montezuma County , Colorado

Plug Service - Whipstock

23-Aug-2010

Job Site Documents

The Road to Excellence Starts with Safety

Sold To #: 320986	Ship To #: 320986	Quote #:	Sales Order #: 7587194
Customer: KINDER MORGAN INC	Customer Rep: Kornegay, Kenny		
Well Name: Sand Canyon	Well #: #8	API/UWI #:	
Field:	City (SAP): HOUSTON	County/Parish: Montezuma	State: Colorado
Contractor: AZTEC WELL SERVICE	Rig/Platform Name/Num: AWS 580		
Job Purpose: Plug Service - Whipstock			
Well Type: Producing Well	Job Type: Plug Service - Whipstock		
Sales Person: SNYDER, RANDALL	Srv Supervisor: WOOD, BRANDON	MBU ID Emp #: 412753	

Job Personnel

HES Emp Name	Exp Hrs	Emp #	HES Emp Name	Exp Hrs	Emp #	HES Emp Name	Exp Hrs	Emp #
AXT, STEPHEN Gary	4.5	434802	ETCITY, JERRY	4.5	227876	WOOD, BRANDON M	4.5	412753

Equipment

HES Unit #	Distance-1 way	HES Unit #	Distance-1 way	HES Unit #	Distance-1 way	HES Unit #	Distance-1 way
10248068	112 mile	10829466	112 mile	11324578	112 mile		

Job Hours

Date	On Location Hours	Operating Hours	Date	On Location Hours	Operating Hours	Date	On Location Hours	Operating Hours
TOTAL			Total is the sum of each column separately					

Job				Job Times			
Formation Name				Date	Time	Time Zone	
Formation Depth (MD)	Top	Bottom		Called Out	23 - Aug - 2010	08:00	MST
Form Type	BHST			On Location	23 - Aug - 2010	13:00	MST
Job depth MD	7942. ft	Job Depth TVD	7606. ft	Job Started	23 - Aug - 2010	14:40	MST
Water Depth		Wk Ht Above Floor	4. ft	Job Completed	23 - Aug - 2010	15:34	MST
Perforation Depth (MD)	From	To		Departed Loc	23 - Aug - 2010	17:30	MST

Well Data

Description	New / Used	Max pressure psig	Size in	ID in	Weight lbm/ft	Thread	Grade	Top MD ft	Bottom MD ft	Top TVD ft	Bottom TVD ft
Open Hole				6.5				7758.	7942.		
Production Casing	Unknown		7.625	6.765	33.7				7758.		
Drill Pipe	Unknown		2.875	2.151	10.4				7620.		
Fiberglass Tubing	Unknown		2.875	2.441	6.4			7620.	7940.		

Sales/Rental/3rd Party (HES)

Description	Qty	Qty uom	Depth	Supplier
SUGAR, GRANULATED, IMPERIAL	100	LB		

Tools and Accessories

Type	Size	Qty	Make	Depth	Type	Size	Qty	Make	Depth	Type	Size	Qty	Make
Guide Shoe					Packer					Top Plug			
Float Shoe					Bridge Plug					Bottom Plug			
Float Collar					Retainer					SSR plug set			
Insert Float										Plug Container			
Stage Tool										Centralizers			

Miscellaneous Materials

Gelling Agt	Conc	Surfactant	Conc	Acid Type	Qty	Conc	%
Treatment Fld	Conc	Inhibitor	Conc	Sand Type	Size	Qty	

Fluid Data									
Stage/Plug #: 1									
Fluid #	Stage Type	Fluid Name	Qty	Qty uom	Mixing Density lbm/gal	Yield ft ³ /sk	Mix Fluid Gal/sk	Rate bbl/min	Total Mix Fluid Gal/sk
1	Fresh Water		10	bbl	8.33	.0	.0	.0	
2	Cement	CMT - PREMIUM - CLASS G, 94 LB SK (100003685)	150	sacks	16.5	1.06	4.23		4.23
	94 lbm	CMT - PREMIUM - CLASS G REG OR TYPE V, BULK (100003685)							
	3 %	POTASSIUM CHLORIDE 7% (100001585)							
	0.8 %	HR-5, 50 LB SK (100005050)							
	0.125 lbm	POLY-E-FLAKE (101216940)							
	4.228 Gal	FRESH WATER							
Calculated Values		Pressures		Volumes					
Displacement	56.4	Shut In: Instant		Lost Returns		Cement Slurry		Pad	
Top Of Cement		5 Min		Cement Returns		Actual Displacement	58	Treatment	
Frac Gradient		15 Min		Spacers		Load and Breakdown		Total Job	
Rates									
Circulating		Mixing		Displacement		Avg. Job			
Cement Left In Pipe	Amount	0 ft	Reason	Shoe Joint					
Frac Ring # 1 @	ID	Frac ring # 2 @	ID	Frac Ring # 3 @	ID	Frac Ring # 4 @	ID		
The Information Stated Herein Is Correct				Customer Representative Signature					

The Road to Excellence Starts with Safety

Sold To #: 320986	Ship To #: 320986	Quote #:	Sales Order #: 7587194
Customer: KINDER MORGAN INC		Customer Rep: Kornegay, Kenny	
Well Name: Sand Canyon		Well #: #8	API/UWI #:
Field:	City (SAP): HOUSTON	County/Parish: Montezuma	State: Colorado
Legal Description:			
Lat:		Long:	
Contractor: AZTEC WELL SERVICE		Rig/Platform Name/Num: AWS 580	
Job Purpose: Plug Service - Whipstock			Ticket Amount:
Well Type: Producing Well		Job Type: Plug Service - Whipstock	
Sales Person: SNYDER, RANDALL		Srvs Supervisor: WOOD, BRANDON	MBU ID Emp #: 412753

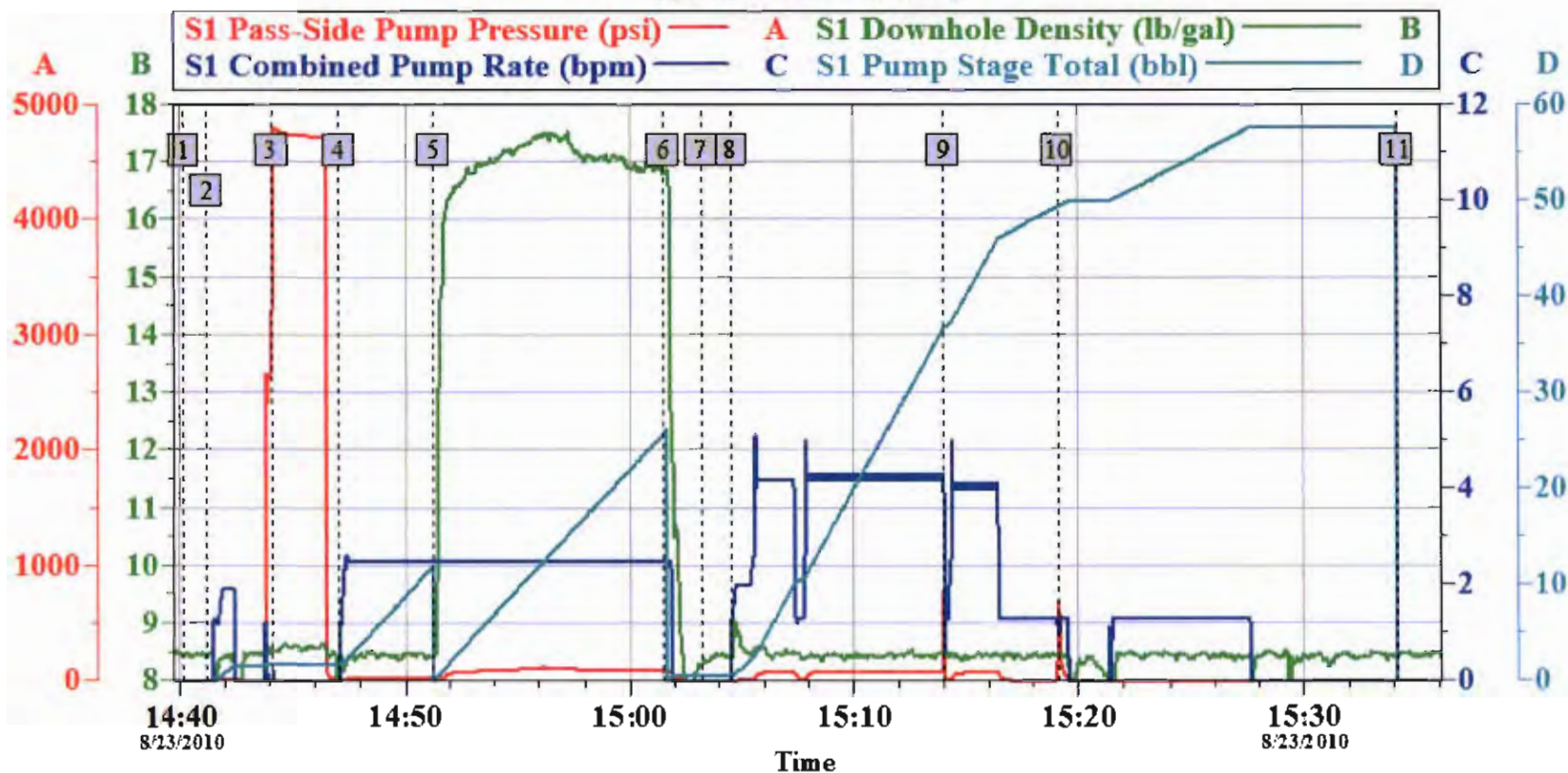
Activity Description	Date/Time	Cht #	Rate bbl/min	Volume bbl		Pressure psig		Comments
				Stage	Total	Tubing	Casing	
Call Out	08/23/2010 08:00							GRAND JUNCTION CALLED CREW AT 0400 AM, 3-21-10
Depart Yard Safety Meeting	08/23/2010 09:55							SAFETY MEETING INVOLVING THE CMT CREW
Crew Leave Yard	08/23/2010 10:00							
Arrive At Loc	08/23/2010 13:00							1- F-450 10829466, 1- RED TIGER PUMP TRUCK 11223557, 1- 660 BULK TRUCK TRAILERS 10723212
Assessment Of Location Safety Meeting	08/23/2010 13:05							ASSESSMENT OF LOCATION INVOLVING THE CMT CREW
Pre-Rig Up Safety Meeting	08/23/2010 13:30							SAFETY MEETING INVOLVING THE ENTIRE CMT/ RIG CREW
Rig-Up Equipment	08/23/2010 13:50							
Pre-Job Safety Meeting	08/23/2010 14:20							SAFETY MEETING INVOLVING EVERYONE ON LOCATION
Start Job	08/23/2010 14:41							TD 326 FT, TP 315.94 FT, FC 272.86 FT, SJ 43.08 FT, 10 3/4 40.5 # J-55 CSG, 14 3/4 OH, CALCULATED 112 PSI TO LIFT PIPE OUT OF HOLE
Test Lines	08/23/2010 14:44		0.5		1.5		4000.0	PRESSURE TEST GOOD TO 4000 PSI

Activity Description	Date/Time	Cht #	Rate bbl/min	Volume bbl		Pressure psig		Comments
				Stage	Total	Tubing	Casing	
Pump Spacer 1	08/23/2010 14:47		2.5		10		35.0	PUMP 10 BBL FRESH WATER SPACER
Pump Cement	08/23/2010 14:51		2.5		28.3		100.0	150 SKS, 1.06 YLD, 4.23 GAL H2O/SK, 28.3 BBLS @ 16.5 #, 15.1 BBLS H2O REQ (TYPE G, 8/10 HR-5, 3 % KCL)
Shutdown	08/23/2010 15:01							SHUT DOWN TO DROP TOP BALLS, 2 FOAM BALLS AND 1 SHEAR OFF BALL
Drop Ball	08/23/2010 15:03							VISUALLY WATCHED BALLS GET SUCKED DOWN INTO PIPE
Pump Displacement	08/23/2010 15:04		4.3		58		80.0	CALCULATED 56.4 BBLS DISPLACEMENT, ACTUALLY PUMPED 58 BBLS ON TANKS MARK TO MARK
Pressure Up	08/23/2010 15:14						797.0	PRESSURE UP TO 797 PSI AND FELL OFF WERE @ 38 BBLS GONE
Shutdown	08/23/2010 15:19						690.0	SHUTDOWN WHEN PRESSURED UP TO 690 PSI AND PRESSURE FELL OFF AGAIN, WAS @ 50 BBLS GONE
Pump Displacement	08/23/2010 15:21		1		8		15.0	CONTINUED WITH CALCULATED DISPLACEMENT, PUMPED ADDITIONAL 8 BBLS ON TANKS AND SHUTDOWN
Shutdown	08/23/2010 15:27							SHUT DOWN, RIG DOWN, PULLING OUT OF HOLE
End Job	08/23/2010 15:34							NO CIRCULATION THROUGHOUT THE ENTIRE CMT JOB, NO PIPE MOVEMENT
Pre-Rig Down Safety Meeting	08/23/2010 15:35							SAFETY MEETING INVOLVING THE CMT/RIG CREW
Rig-Down Equipment	08/23/2010 15:45							

Cementing Job Log

Activity Description	Date/Time	Cht #	Rate bbl/ min	Volume bbl		Pressure psig		Comments
				Stage	Total	Tubing	Casing	
Safety Meeting - Departing Location	08/23/2010 17:25							SAFETY MEETING INVOLVING THE CMT CREW
Depart Location for Service Center or Other Site	08/23/2010 17:30							THANK YOU FOR USING HALLIBURTON, BRANDON WOOD AND CREW

KINDER MORGAN SAND CANYON # 8



Global Event Log

1 Starting Job	14:40:10	2 Start Job	14:41:13	3 Test Lines	14:44:09
4 Pump Spacer	14:47:06	5 Pump Cement	14:51:16	6 Shutdown	15:01:31
7 Drop Ball	15:03:13	8 Pump Displacement	15:04:32	9 Pressure up	15:13:58
10 Shear Off TBG	15:19:07	11 End Job	15:34:12		

Customer: KINDER MORGAN
Well Description: SAND CANYON # 8
Customer Rep: KENNY KORNEGAY

Job Date: 23-Aug-2010
Job type: PLUG
Service Supervisor: BRANDON WOOD

Sales Order #: 7587194
ADC Used: YES
Operator Pump: JERRY ETCITY, U1324578

OptiCem v6.3.4
23-Aug-10 16:00