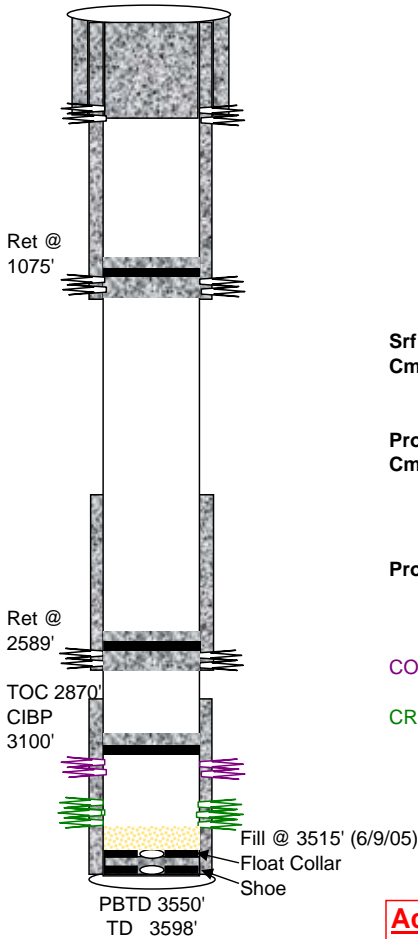




Black Hills Plateau Production, LLC

A Black Hills Corporation Enterprise



General Well Info		2/25/2011 by jad	
Well Name:	HSC #2-16	Field:	Shire Gulch
Diagram Date:	11/8/2010	County:	Mesa
Srf Location:	SWSW 16 9S 97W	State:	Colorado
Lease #(BLM):	C-12643	API #:	05-077-08659
GL Elev:	5513'	KB Elev:	5525'
Formation Tops			
Zone	Depth		
Cameo	2654'		
Rollins	2935'		
Cozzette	3151'		
Corcoran	3343'		

Srf Csg 8-5/8" 24# ST&C 0-470' (12 1/4" hole)
Cmt 325 sx Class "G" + 2% CaCl₂ + 1/4# Flocele (27 bbl to srf)

Prod Csg 5-1/2" 15.5# J55 LT&C 0-3596' (7 7/8" hole)
Cmt 40sx (lead) Highfill + 2#/sk Capseal
 90sx (tail) 50/50 Poz, Class G + 1/4#/sx Flocele + 10% salt + 2#/sx Capseal

Prod Tbg none

COZZ Perfs (12/29/92) 3174-3181, 3188-3210 (1spf)

CRCN Perfs (12/05/92) 3361-3372, 3379-3381, 3407-3435' (1spf, 41 holes)
 Frac (12/6/92) 349,000# 16/30 sand, 70Q N₂ foam ATP: 1266psi ATR: 25bpm
 4hrs after frac, chg to 32/64 - CP 600psi - came back w/ water & foam

Actual P&A 1/22/11

- Set CIBP at 3100' w/2 sx cmt on top
- Perf 2650'
- Set cement retainer 2589'
- Pump 40sx Class III cmt below retainer. Sting out. Dump 10 sx Class III cmt on top of retainer.
- Perforate 4 circulating holes @ 1125'
- Set cement retainer @ 1075'.
- Sting in to retainer. Pump 180sx Class III cmt below retainer. Sting out. Dump 10sx cmt on top of retainer.
- Perforate 4 circulating holes @ 520'.
- Pump 160 sx Class III cement. 7 bbls cmt returned to pit. Witnessed by BLM-Ed Fancher
- Dig out wellhead. Cut off 8 5/8" and 5 1/2" csg 6' below ground level. Install dry hole marker as per BLM.
- Reclaim Location.