
NOBLE ENERGY INC E-BUSINESS

**FEDERAL 8-11A
PARACHUTE
Garfield County , Colorado**

Cement Surface Casing
16-Sep-2010

Job Site Documents

The Road to Excellence Starts with Safety

Sold To #: 345242		Ship To #: 2804057		Quote #:		Sales Order #: 7609119	
Customer: NOBLE ENERGY INC E-BUSINESS				Customer Rep: WILKERSON, KENNY			
Well Name: FEDERAL			Well #: 8-11A		API/UWI #: 05-045-19133		
Field: PARACHUTE		City (SAP): PARACHUTE		County/Parish: Garfield		State: Colorado	
Lat: N 39.382 deg. OR N 39 deg. 22 min. 54.077 secs.				Long: W 108.023 deg. OR W -109 deg. 58 min. 36.437 secs.			
Contractor: H&P Drilling			Rig/Platform Name/Num: H&P 322				
Job Purpose: Cement Surface Casing							
Well Type: Development Well				Job Type: Cement Surface Casing			
Sales Person: METLI, MARSHALL			Srvc Supervisor: HONE, AARON			MBU ID Emp #: 381285	
Job Personnel							
HES Emp Name	Exp Hrs	Emp #	HES Emp Name	Exp Hrs	Emp #	HES Emp Name	Exp Hrs
ANDERSON, ADAM S	5.5	456683	HONE, AARON D	5.5	381285	JENKINS, DEMON Lashaun	5.5
WEAVER, CARLTON Russell	5.5	457698					
Equipment							
HES Unit #	Distance-1 way	HES Unit #	Distance-1 way	HES Unit #	Distance-1 way	HES Unit #	Distance-1 way
10011429	60 mile	10744648C	60 mile	10783493	60 mile	10822007	60 mile
10998508	60 mile	11259886	60 mile				
Job Hours							
Date	On Location Hours	Operating Hours	Date	On Location Hours	Operating Hours	Date	On Location Hours
9/16/10	5.5	4.4					
TOTAL		<i>Total is the sum of each column separately</i>					
Job				Job Times			
Formation Name				Date	Time	Time Zone	
Formation Depth (MD)	Top	Bottom		Called Out	16 - Sep - 2010	05:30	MST
Form Type	BHST			On Location	16 - Sep - 2010	10:30	MST
Job depth MD	1536. ft			Job Started	16 - Sep - 2010	13:19	MST
Water Depth	Wk Ht Above Floor			Job Completed	16 - Sep - 2010	14:24	MST
Perforation Depth (MD)	From	To		Departed Loc	16 - Sep - 2010	16:00	MST
Well Data							
Description	New / Used	Max pressure psig	Size in	ID in	Weight lbm/ft	Thread	Grade
Sales/Rental/3rd Party (HES)							
Description				Qty	Qty uom	Depth	Supplier
PLUG,CMTG,TOP,8 5/8,HWE,7.20 MIN/8.09 MA				1	EA		
PORT. DAS W/CEMWIN;ACQUIRE W/HES, ZI				1	JOB		
ADC (AUTO DENSITY CTRL) SYS, /JOB,ZI				1	JOB		
R/A DENSOMETER W/CHART RECORDER,/JOB,ZI				1	JOB		
Tools and Accessories							
Type	Size	Qty	Make	Depth	Type	Size	Qty
Guide Shoe					Packer		
Float Shoe					Bridge Plug		
Float Collar					Retainer		
Insert Float							
Stage Tool							
Miscellaneous Materials							
Gelling Agt		Conc		Surfactant		Conc	
Treatment Fld		Conc		Inhibitor		Conc	

Fluid Data									
Stage/Plug #: 1									
Fluid #	Stage Type	Fluid Name	Qty	Qty uom	Mixing Density lbm/gal	Yield ft ³ /sk	Mix Fluid Gal/sk	Rate bbl/min	Total Mix Fluid Gal/sk
1	Water Spacer		20.00	bbl	8.33	.0	.0	.0	
2	Lead Cement	VERSACEM (TM) SYSTEM (452010)	208.0	sacks	12.3	2.38	13.75		13.75
		13.75 Gal	FRESH WATER						
3	Tail Cement	VERSACEM (TM) SYSTEM (452010)	127.0	sacks	12.8	2.11	11.75		11.75
		11.75 Gal	FRESH WATER						
4	Displacement		93.4	bbl	8.33	.0	.0	.0	
Calculated Values		Pressures		Volumes					
Displacement	93.4	Shut In: Instant		Lost Returns	0	Cement Slurry	132.9	Pad	
Top Of Cement	SURFACE	5 Min		Cement Returns	18	Actual Displacement	93	Treatment	
Frac Gradient		15 Min		Spacers	20	Load and Breakdown		Total Job	
Rates									
Circulating	8	Mixing	6	Displacement	6	Avg. Job	6		
Cement Left In Pipe	Amount	43.10 ft	Reason	Shoe Joint					
Frac Ring # 1 @	ID	Frac ring # 2 @	ID	Frac Ring # 3 @	ID	Frac Ring # 4 @	ID		
The Information Stated Herein Is Correct				Customer Representative Signature					

The Road to Excellence Starts with Safety

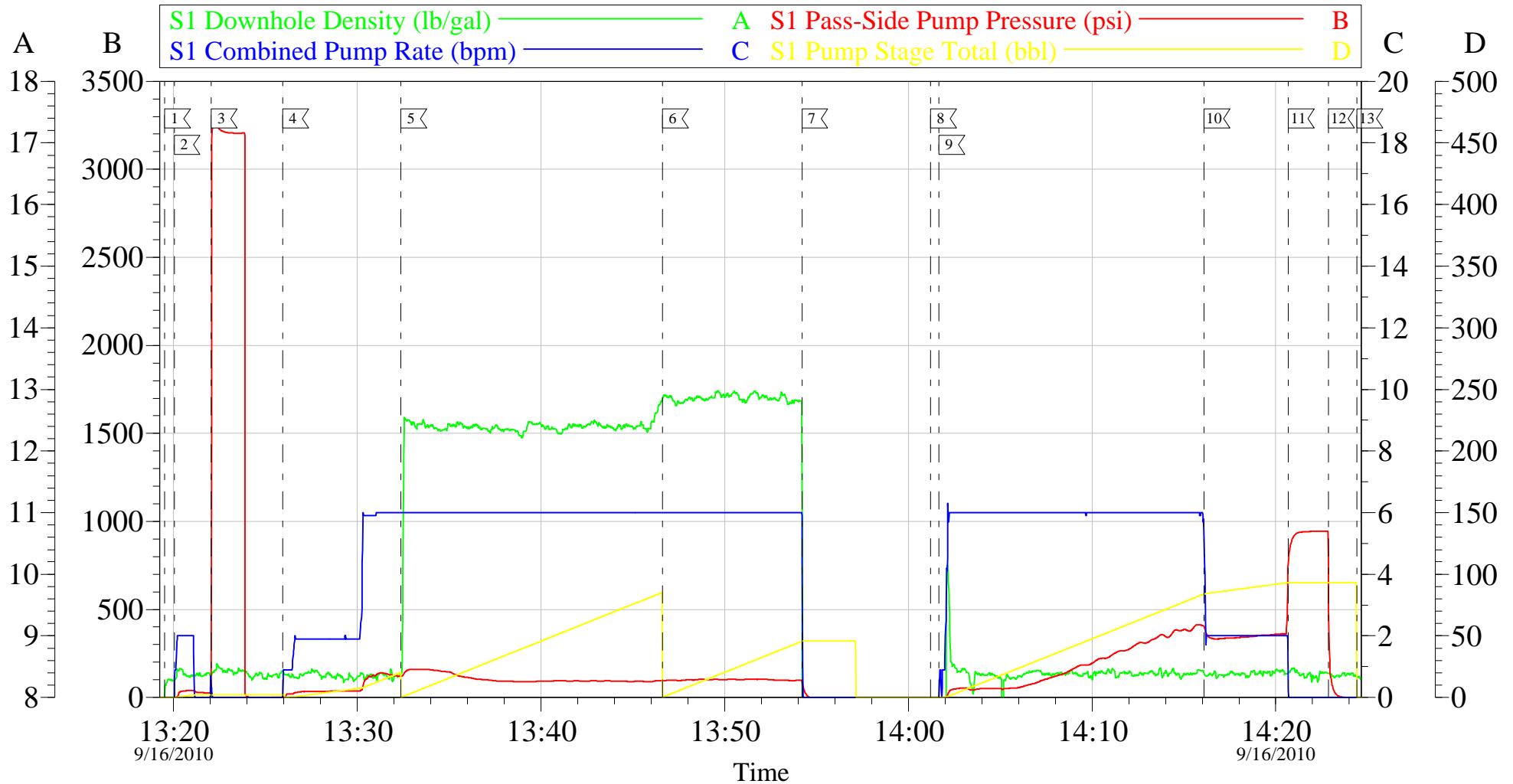
Sold To #: 345242		Ship To #: 2804057		Quote #:		Sales Order #: 7609119	
Customer: NOBLE ENERGY INC E-BUSINESS				Customer Rep: WILKERSON, KENNY			
Well Name: FEDERAL			Well #: 8-11A			API/UWI #: 05-045-19133	
Field: PARACHUTE		City (SAP): PARACHUTE		County/Parish: Garfield		State: Colorado	
Legal Description:							
Lat: N 39.382 deg. OR N 39 deg. 22 min. 54.077 secs.				Long: W 108.023 deg. OR W -109 deg. 58 min. 36.437 secs.			
Contractor: H&P Drilling			Rig/Platform Name/Num: H&P 322				
Job Purpose: Cement Surface Casing						Ticket Amount:	
Well Type: Development Well			Job Type: Cement Surface Casing				
Sales Person: METLI, MARSHALL			Srvc Supervisor: HONE, AARON			MBU ID Emp #: 381285	

Activity Description	Date/Time	Cht #	Rate bbl/min	Volume bbl		Pressure psig		Comments
				Stage	Total	Tubing	Casing	
Call Out	09/16/2010 05:30							
Pre-Convoy Safety Meeting	09/16/2010 08:50							
Crew Leave Yard	09/16/2010 09:00							
Arrive At Loc	09/16/2010 10:30							
Assessment Of Location Safety Meeting	09/16/2010 10:40							RIG RUNNING CASING
Pre-Rig Up Safety Meeting	09/16/2010 10:50							OFF LINE CEMENT JOB.
Rig-Up Equipment	09/16/2010 11:00							
Pre-Job Safety Meeting	09/16/2010 13:00							
Start Job	09/16/2010 13:19	1						HOLE- 12 1/4" TD- 1536' CASING- 8 5/8" 24# J-55 TP- 1527' SJ- 43.10'
Event	09/16/2010 13:20		2	2			39.0	FILL LINES WITH FRESH WATER
Test Lines	09/16/2010 13:22	3						3265 PSI.
Pump Spacer	09/16/2010 13:25	4	6	20			124.0	FRESH WATER
Pump Lead Cement	09/16/2010 13:32	5	6	88.2			157.0	VERSACEM- 208 SKS, 12.3, 2.38, 13.75
Pump Tail Cement	09/16/2010 13:46	6	6	44.7			100.0	VERSACEM- 127 SKS, 12.8, 2.11, 11.75
Shutdown	09/16/2010 13:54	7						
Drop Top Plug	09/16/2010 14:01	8						PLUG AWAY
Pump Displacement	09/16/2010 14:01	9	6	94.3			410.0	FRESH WATER

Activity Description	Date/Time	Cht #	Rate bbl/ min	Volume bbl		Pressure psig		Comments
				Stage	Total	Tubing	Casing	
Slow Rate	09/16/2010 14:16	10	2	84			333.0	
Bump Plug	09/16/2010 14:20	11	2	94.3			370.0	PLUG LANDED. PUMPED TO 938 PSI.
Check Floats	09/16/2010 14:22	12						FLOATS HELD. 1/2 BBL. BACK TO TRUCK
End Job	09/16/2010 14:24	13						GOOD RETURNS THROUGHOUT JOB. 18 BBLS. CEMENT TO SURFACE.
Post-Job Safety Meeting (Pre Rig-Down)	09/16/2010 14:30							
Rig-Down Equipment	09/16/2010 14:40							
Pre-Convoy Safety Meeting	09/16/2010 15:50							
Crew Leave Location	09/16/2010 16:00							THANK YOU FOR USING HALLIBURTON.

NOBLE

8 5/8" SURFACE



Local Event Log					
1	START JOB	13:19:31	2	FILL LINES	13:20:02
3	TEST LINES	13:22:03	4	PUMP SPACER	13:25:57
5	PUMP LEAD CEMENT	13:32:23	6	PUMP TAIL CEMENT	13:46:37
7	SHUT DOWN	13:54:12	8	DROP PLUG	14:01:13
9	PUMP DISPLACEMENT	14:01:40	10	SLOW RATE	14:16:06
11	BUMP PLUG	14:20:41	12	CHECK FLOATS	14:22:52
13	END JOB	14:24:25			

Customer: NOBLE	Job Date: 16-Sep-2010	Sales Order #: 7609119
Well Description: FED 8-11A	Job Type: SURFACE	ADC Used: YES
Company Rep: KENNY WILKERSON	Cement Supervisor: AARON HONE	Elite # / Operator: 6/ RUSTY WEAVER

OptiCem v6.3.4
16-Sep-10 14:47