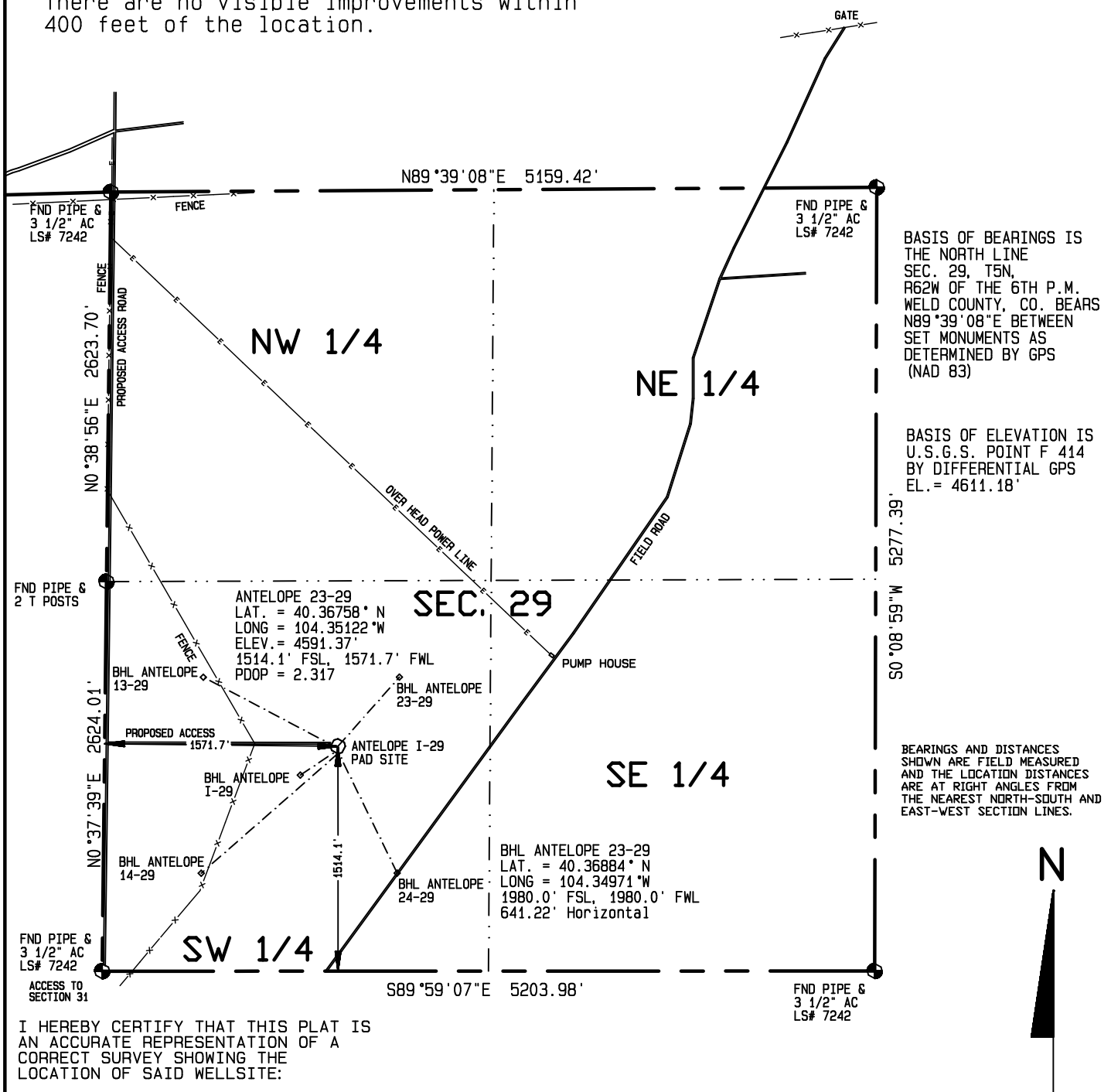
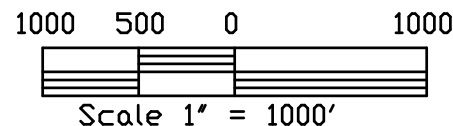


There are no visible improvements within 400 feet of the location.



I HEREBY CERTIFY THAT THIS PLAT IS AN ACCURATE REPRESENTATION OF A CORRECT SURVEY SHOWING THE LOCATION OF SAID WELLSITE:

Dan Griggs PLS# 38018



**CONTRACT SURVEYORS, LTD.**  
COMPLETE SURVEYING AND GLOBAL POSITIONING

2133 SOUTH BELLAIRE STREET #14  
DENVER COLORADO 80222  
(303) 756-3695



MULTIPLE WELL PLAN  
PAGE 3

CSL# 11104-07

DATE OF FIELD WORK:

27 JANUARY 2011

DATE OF DRAWING:

7 FEBRUARY 2011

ANTELOPE 23-29 (DIRECTIONAL WELL)

NE 1/4 SW 1/4 SEC. 29, T5N, R62W

BONANZA CREEK ENERGY OPERATING COMPANY, LLC

WELD COUNTY, COLORADO