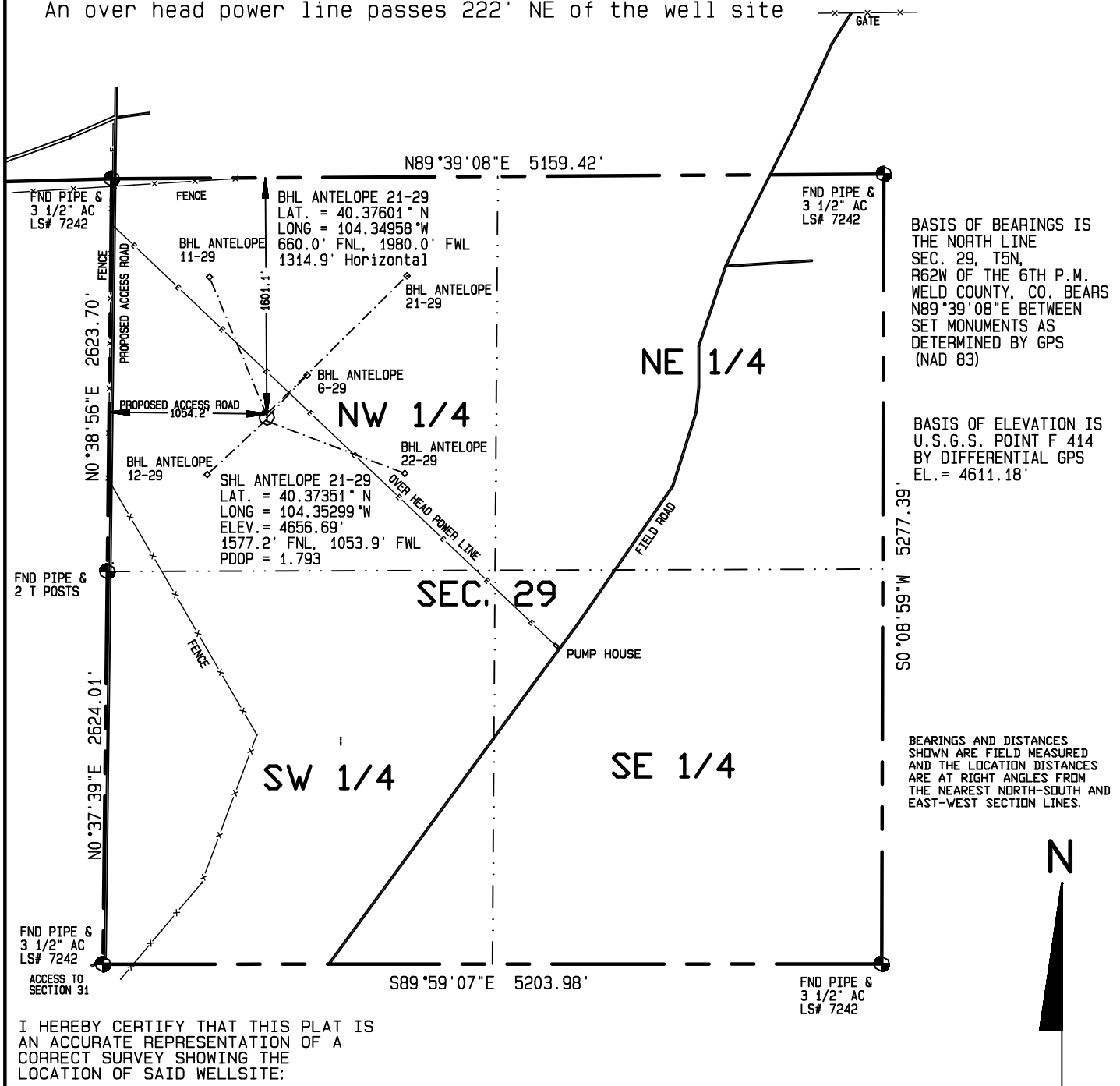
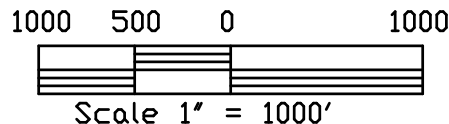


Visible improvements within 400 feet of the location include;  
An over head power line passes 222' NE of the well site



I HEREBY CERTIFY THAT THIS PLAT IS  
AN ACCURATE REPRESENTATION OF A  
CORRECT SURVEY SHOWING THE  
LOCATION OF SAID WELLSITE:



Dan Griggs PLS# 38018

**CONTRACT SURVEYORS, LTD.**  
COMPLETE SURVEYING AND GLOBAL POSITIONING

2133 SOUTH BELLAIRE STREET #14  
DENVER COLORADO 80222  
(303) 756-3695



MULTIPLE WELL PLAN  
PAGE 3

CSL# 11104-06

DATE OF FIELD WORK:

27 JANUARY, 2010

DATE OF DRAWING:

5 FEBRUARY, 2011

ANTELOPE 21-29 (DIRECTIONAL WELL)

SW 1/4 NW 1/4 SEC. 29, T5N, R62W

BONANZA CREEK ENERGY OPERATING COMPANY, LLC

WELD COUNTY, COLORADO