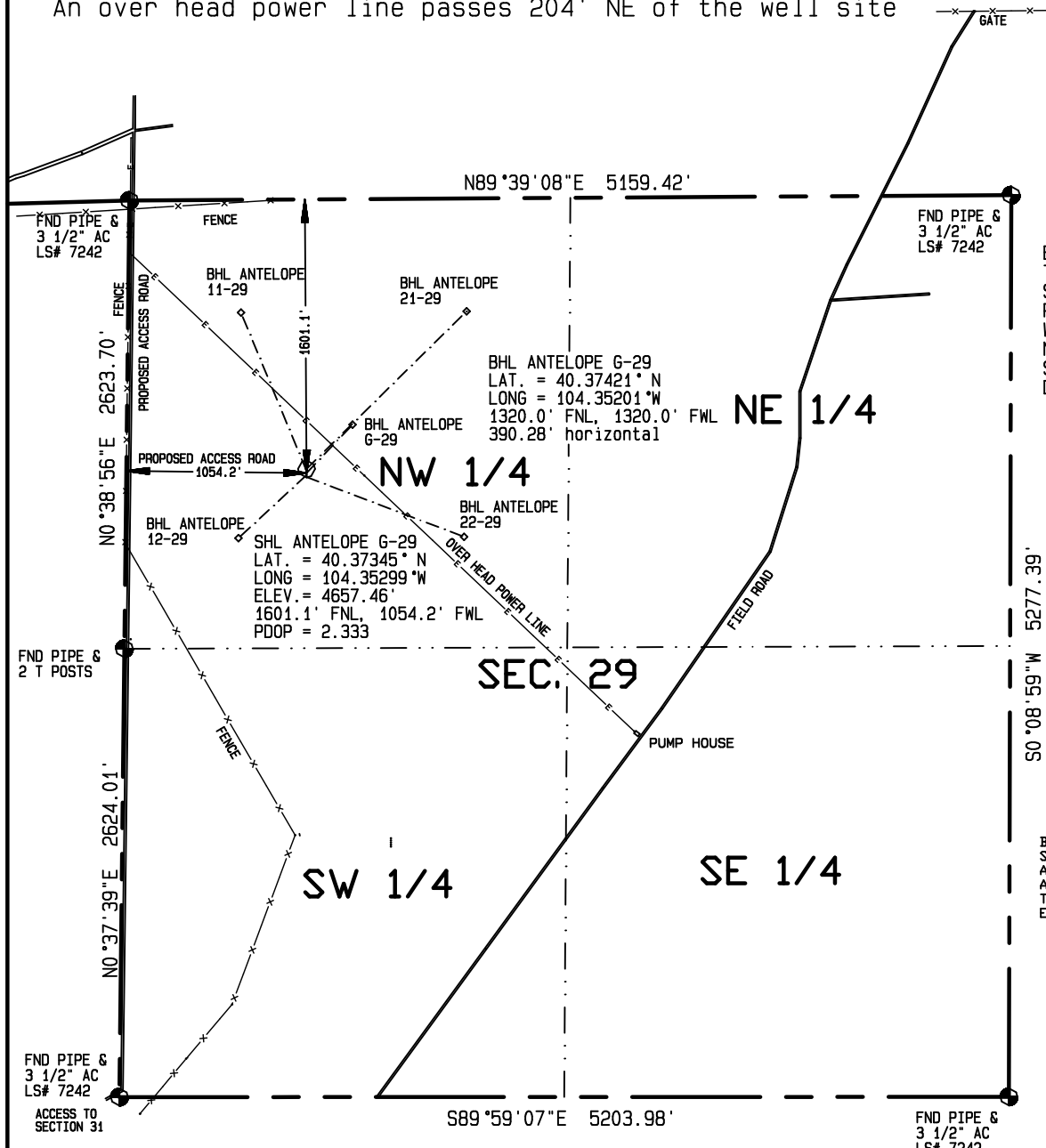


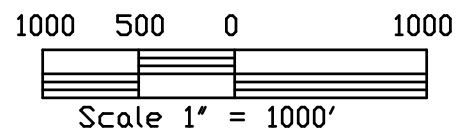
Visible improvements within 400 feet of the location include;  
 An over head power line passes 204' NE of the well site



BASIS OF BEARINGS IS THE NORTH LINE SEC. 29, T5N, R62W OF THE 6TH P.M. WELD COUNTY, CO. BEARS N89°39'08"E BETWEEN SET MONUMENTS AS DETERMINED BY GPS (NAD 83)

BASIS OF ELEVATION IS U.S.G.S. POINT F 414 BY DIFFERENTIAL GPS EL. = 4611.18'

BEARINGS AND DISTANCES SHOWN ARE FIELD MEASURED AND THE LOCATION DISTANCES ARE AT RIGHT ANGLES FROM THE NEAREST NORTH-SOUTH AND EAST-WEST SECTION LINES.



I HEREBY CERTIFY THAT THIS PLAT IS AN ACCURATE REPRESENTATION OF A CORRECT SURVEY SHOWING THE LOCATION OF SAID WELLSITE:

Dan Griggs PLS# 38018

**CONTRACT SURVEYORS, LTD.**  
 COMPLETE SURVEYING AND GLOBAL POSITIONING

2133 SOUTH BELLAIRE STREET #14  
 DENVER COLORADO 80222  
 (303) 756-3695

MULTIPLE WELL PLAN  
 PAGE 1

DATE OF FIELD WORK: 27 JANUARY, 2010	DATE OF DRAWING: 7 FEBRUARY, 2011
ANTELOPE G-29 PAD SITE (DIRECTIONAL WELL)	
SW 1/4 NW 1/4 SEC. 29, T5N, R62W	
BONANZA CREEK ENERGY OPERATING COMPANY, LLC	
WELD COUNTY, COLORADO	

CSL# 11104-06