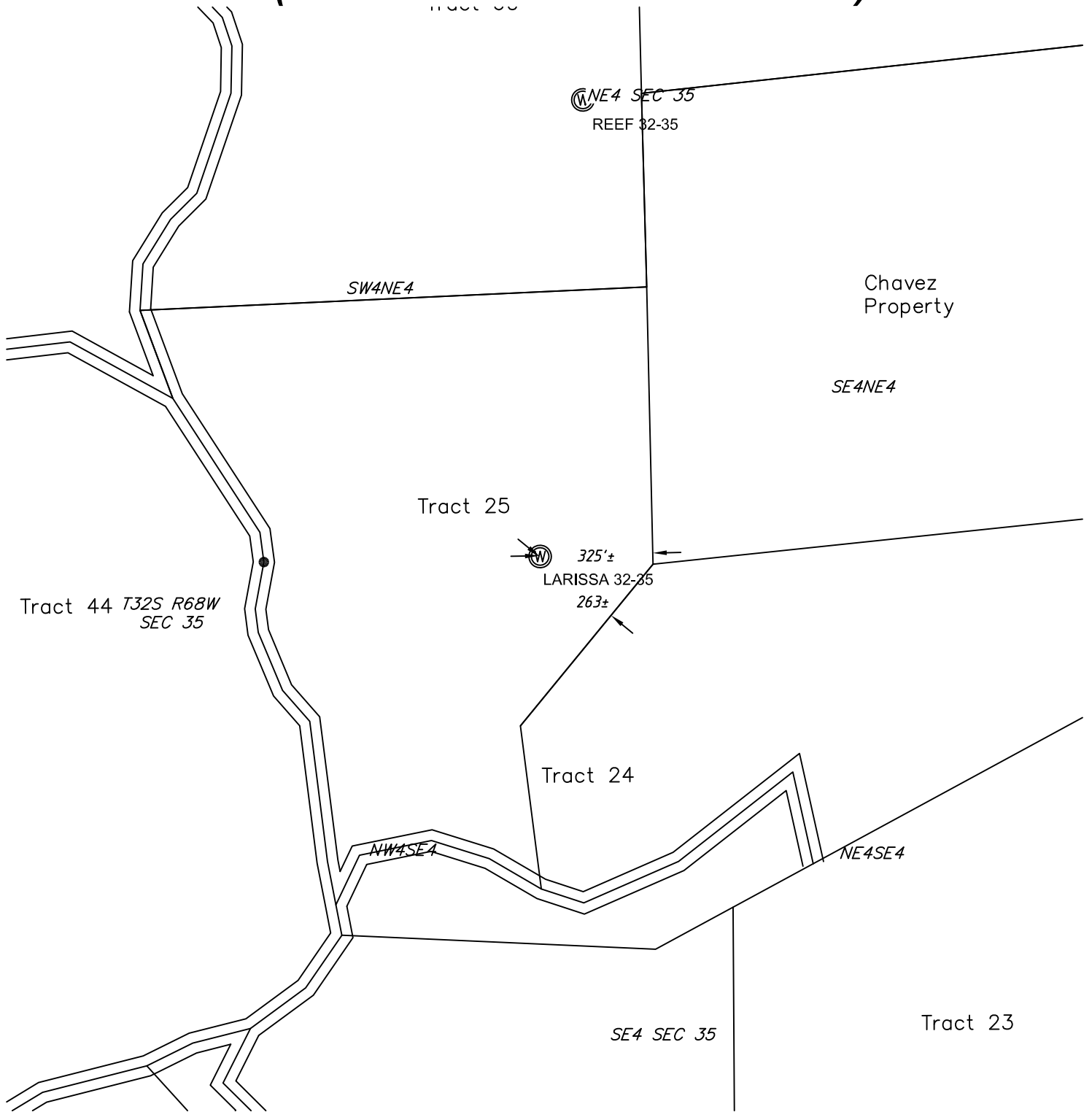
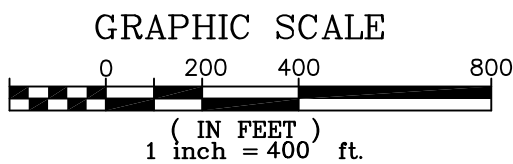


Larissa 32-35 (North Fork Ranch Subdivision)



NOTE:
 FOOTAGES GIVEN ARE ONLY ESTIMATES BASED ON SUBDIVISION PLATS AND TIED TO EXISTING CONTROL. A FULL BOUNDARY SURVEY IS REQUIRED TO DETERMINE TRUE SUBDIVISION LOT AND ROAD LOCATIONS, DISTANCES AND AREA OR FOOTAGE CALCULATIONS.

DATE: December 14, 2010



SHIELDS SURVEY L^{td.} Co.
 Raton, New Mexico 87740
 (575)445-1232