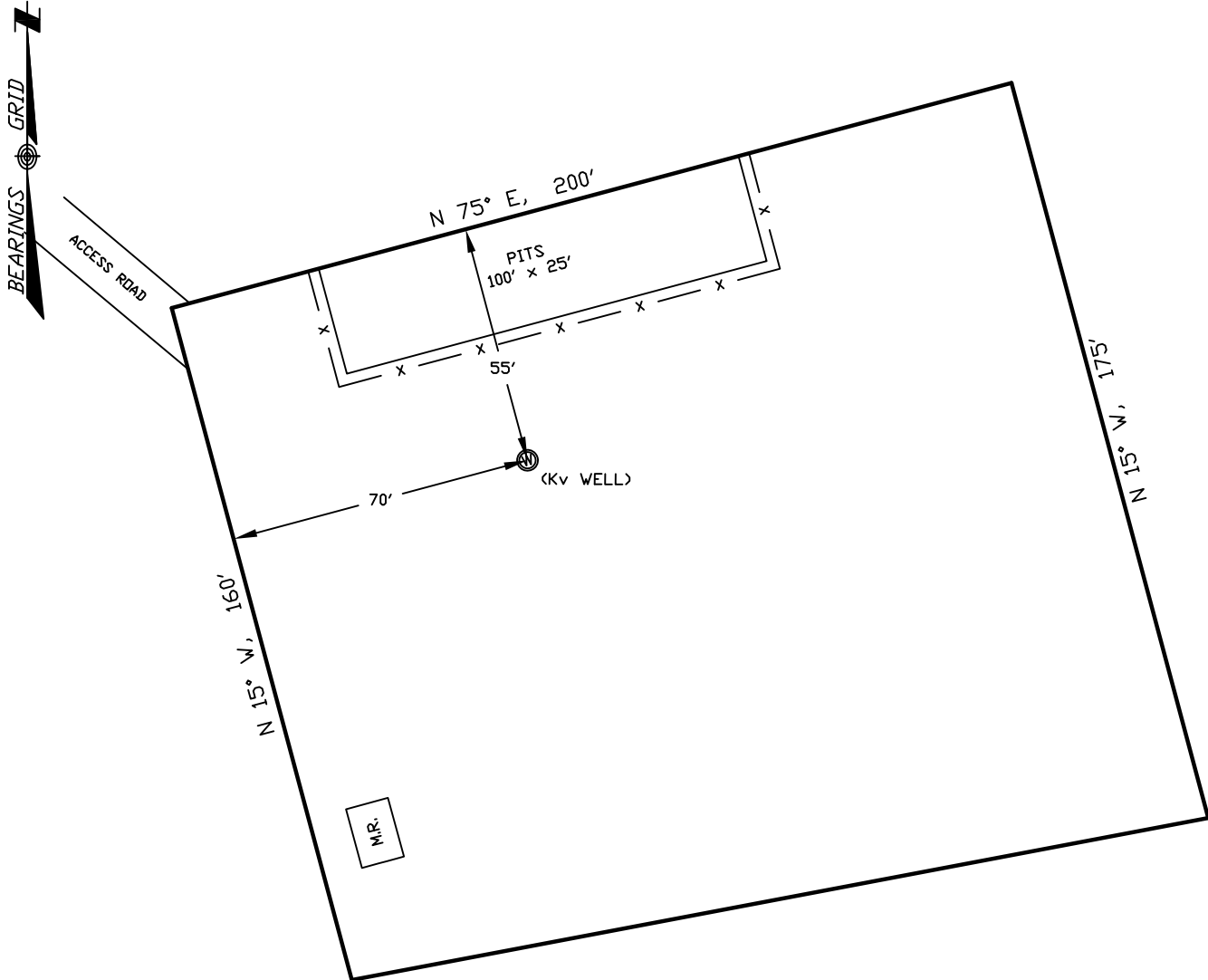


# WELLSITE/PRODUCTION EQUIPMENT LAYOUT

OPERATOR: Pioneer Natural Resources

WELL NAME: Larissa 32-35

SWNE of SECTION 35 TOWNSHIP 32 S, RANGE 68 W OF THE 6TH P.M., IN LAS ANIMAS COUNTY



**NOTE:**

MUD AND BLOW PITS WILL BE CONVERTED TO LINED EVAPORATION PITS FOR PRODUCTION.

WELLHEADS ARE TYPICALLY PCP DRIVE HEADS

**LEGEND:**

- = WELLHEAD
- = EXISTING WELLPAD
- = FENCE (4 STRAND)
- = 4" GAS GATHERING LINE
- = 2" WATER LINE
- = COMBO METER RUN AND WATER/GAS SEPERATOR
- = GAS DRIVE SYSTEM

**GRAPHIC SCALE**



( IN FEET )

1 inch = 40 ft.

December 14, 2010

Date Platted

**SHIELDS SURVEY L<sup>td</sup>. C<sup>o</sup>.**  
 Raton, New Mexico 87740  
 (575)445-1232