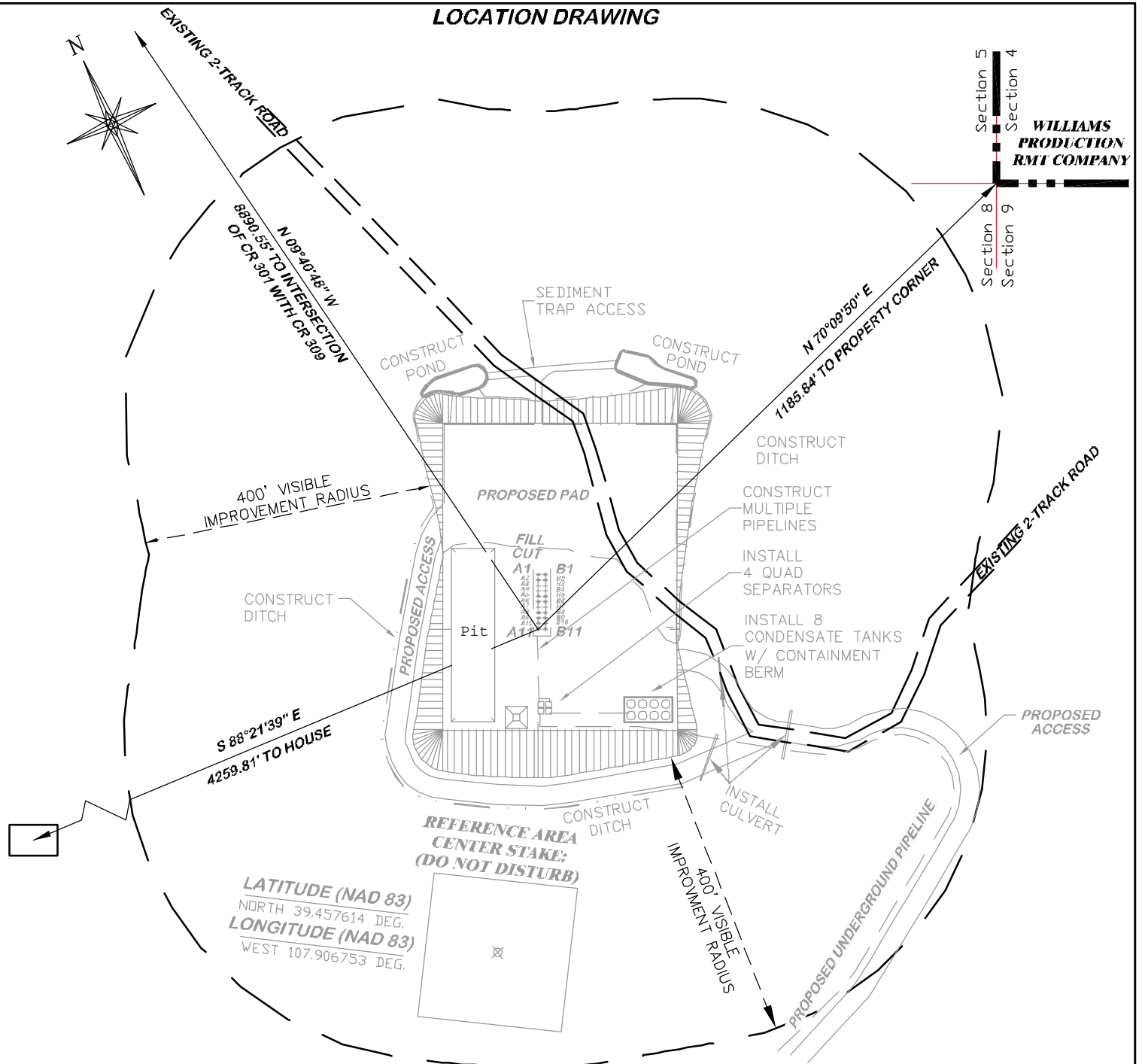
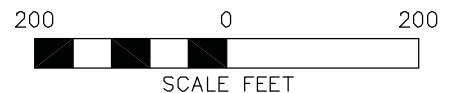


LOCATION DRAWING



SLOT	WELL NAME	SLOT	WELL NAME
A1	SPRUCE CREEK 5-34A	B1	SPRUCE CREEK 5-44A
A2	SPRUCE CREEK 5-34B	B2	SPRUCE CREEK 5-44B
A3	OPEN	B3	OPEN
A4	OPEN	B4	OPEN
A5	SPRUCE CREEK 5-34C	B5	SPRUCE CREEK 5-44C
A6	SPRUCE CREEK 5-34D	B6	SPRUCE CREEK 5-44D
A7	OPEN	B7	OPEN
A8	SPRUCE CREEK 8-31A	B8	SPRUCE CREEK 8-41A
A9	SPRUCE CREEK 8-31B	B9	SPRUCE CREEK 8-41B
A10	SPRUCE CREEK 8-31C	B10	SPRUCE CREEK 8-41C
A11	SPRUCE CREEK 8-31D	B11	SPRUCE CREEK 8-41D



8A PAD



RIFFIN & ASSOCIATES, INC.
1414 ELK ST., ROCK SPRINGS, WY 82901

(307) 362-5028

DRAWN: 6/18/10 - DEH

SCALE: 1" = 200'

REVISED: N/A

DRG JOB No. 16975

EXHIBIT 1B

LOCATION DRAWING

NOBLE ENERGY, INC.

SPRUCE CREEK, 5-34A, 5-34B, 5-34C, 5-34D, 5-44A, 5-44B, 5-44C, 5-44D, 8-31A, 8-31B, 8-31C, 8-31D, 8-41A, 8-41B, 8-41C, & 8-41D, NENE, SECTION 8, T.7S., R94W, 6TH P.M. GARFIELD COUNTY, COLORADO