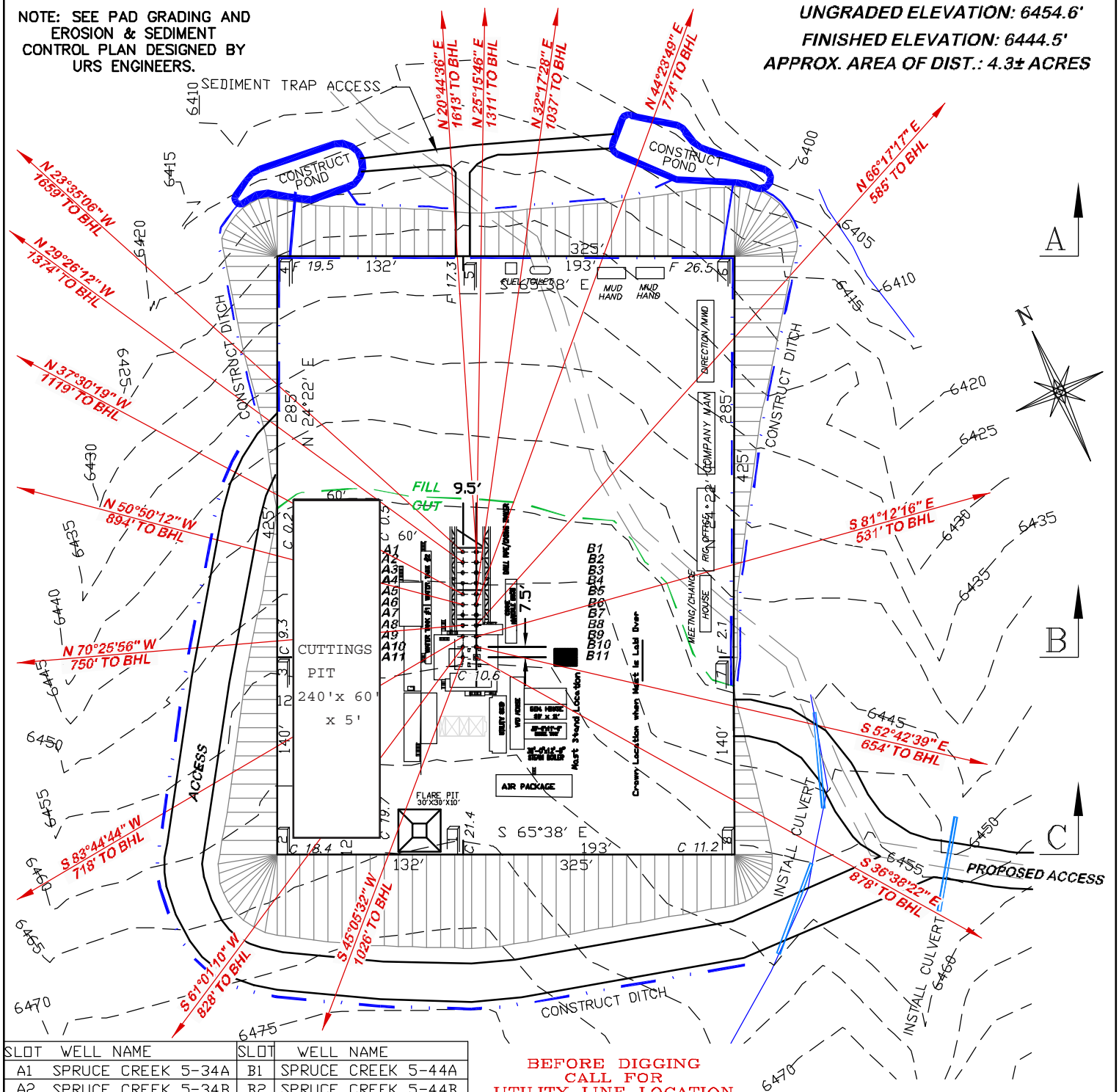


NOTE: SEE PAD GRADING AND  
EROSION & SEDIMENT  
CONTROL PLAN DESIGNED BY  
URS ENGINEERS.

UNGRADED ELEVATION: 6454.6'  
FINISHED ELEVATION: 6444.5'  
APPROX. AREA OF DIST.: 4.3± ACRES

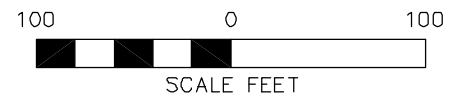


SLOT	WELL NAME	SLOT	WELL NAME
A1	SPRUCE CREEK 5-34A	B1	SPRUCE CREEK 5-44A
A2	SPRUCE CREEK 5-34B	B2	SPRUCE CREEK 5-44B
A3	OPEN	B3	OPEN
A4	OPEN	B4	OPEN
A5	SPRUCE CREEK 5-34C	B5	SPRUCE CREEK 5-44C
A6	SPRUCE CREEK 5-34D	B6	SPRUCE CREEK 5-44D
A7	OPEN	B7	OPEN
A8	SPRUCE CREEK 8-31A	B8	SPRUCE CREEK 8-41A
A9	SPRUCE CREEK 8-31B	B9	SPRUCE CREEK 8-41B
A10	SPRUCE CREEK 8-31C	B10	SPRUCE CREEK 8-41C
A11	SPRUCE CREEK 8-31D	B11	SPRUCE CREEK 8-41D

**BEFORE DIGGING  
CALL FOR  
UTILITY LINE LOCATION**

NOTE: THE EARTH QUANTITIES ON  
THIS DRAWING ARE ESTIMATED AND  
THE USE OF SAID QUANTITIES IS AT  
THE RESPONSIBILITY OF THE USER.

**8A PAD**



**CONSTRUCTION LAYOUT DRAWING 1 OF 5**

**NOBLE ENERGY, INC.**

**SPRUCE CREEK, 5-34A, 5-34B, 5-34C, 5-34D, 5-44A, 5-44B,  
5-44C, 5-44D, 8-31A, 8-31B, 8-31C, 8-31D, 8-41A, 8-41B,  
8-41C, & 8-41D,**

**NENE, SECTION 8, T.7S., R.94W, 6TH P.M.**

**GARFIELD COUNTY, COLORADO**

**ESTIMATED EARTHWORK**

ITEM	CUT	FILL	TOPSOIL	EXCESS
PAD	33199 CY	29391 CY	3485 CY	323 CY
PIT	5750 CY			5750 CY
TOTALS	38949 CY	29391 CY	3485 CY	6073 CY



**RIFFIN & ASSOCIATES, INC.**  
1414 ELK ST., ROCK SPRINGS, WY 82901

(307) 362-5028

**DRAWN: 1/20/09 - WWG**

**SCALE: 1" = 100'**

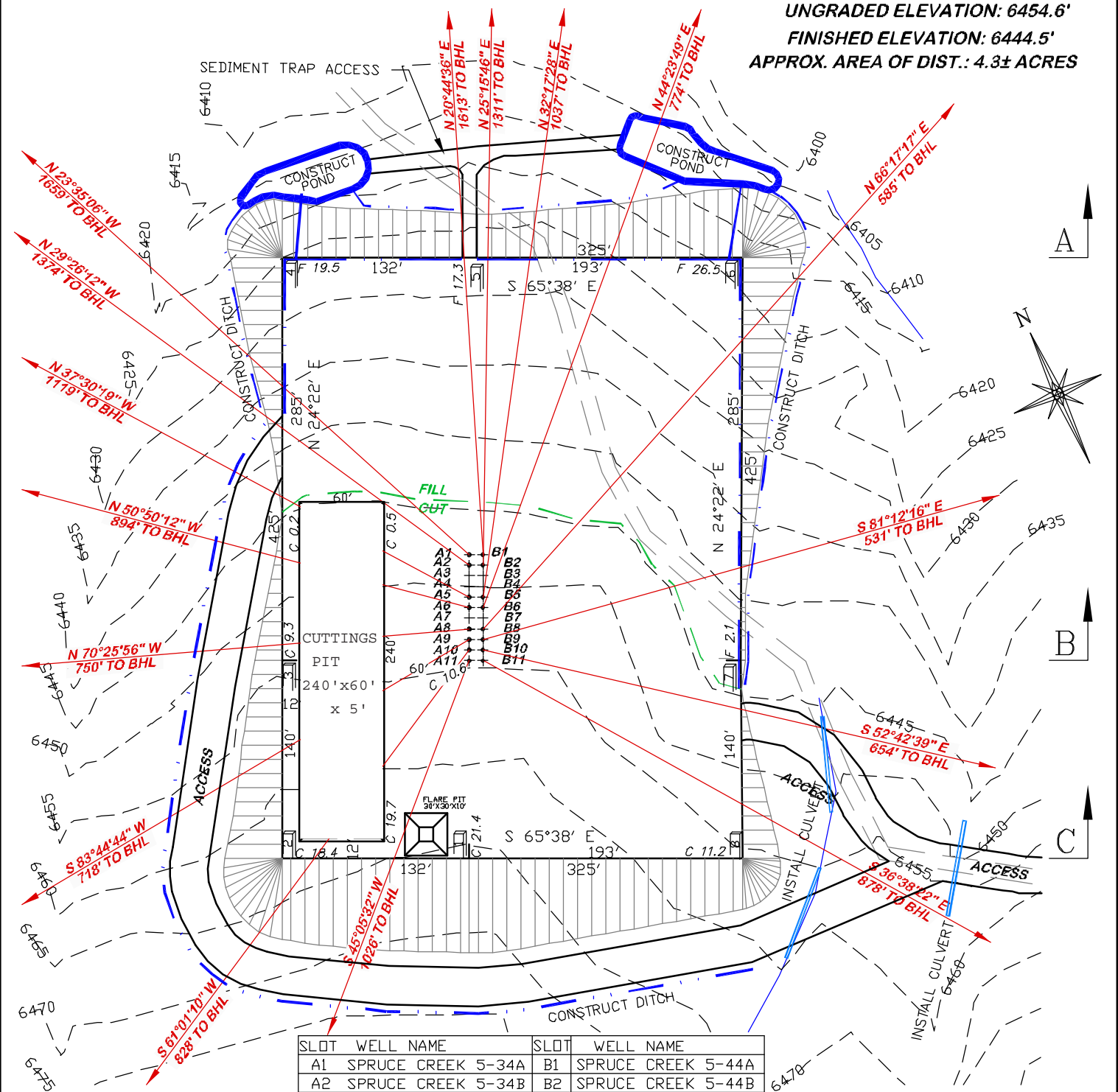
**REVISED: 6/18/10 - DEH**

**DRG JOB No. 16975**

**UPDATE TO NEW COGCC RULES**

**EXHIBIT 2**

UNGRADED ELEVATION: 6454.6'  
 FINISHED ELEVATION: 6444.5'  
 APPROX. AREA OF DIST.: 4.3± ACRES



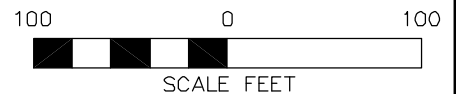
**BEFORE DIGGING  
 CALL FOR  
 UTILITY LINE LOCATION**

NOTE: THE EARTH QUANTITIES ON  
 THIS DRAWING ARE ESTIMATED  
 AND THE USE OF IS AT THE  
 RESPONSIBILITY OF THE USER.

SLOT	WELL NAME	SLOT	WELL NAME
A1	SPRUCE CREEK 5-34A	B1	SPRUCE CREEK 5-44A
A2	SPRUCE CREEK 5-34B	B2	SPRUCE CREEK 5-44B
A3	OPEN	B3	OPEN
A4	OPEN	B4	OPEN
A5	SPRUCE CREEK 5-34C	B5	SPRUCE CREEK 5-44C
A6	SPRUCE CREEK 5-34D	B6	SPRUCE CREEK 5-44D
A7	OPEN	B7	OPEN
A8	SPRUCE CREEK 8-31A	B8	SPRUCE CREEK 8-41A
A9	SPRUCE CREEK 8-31B	B9	SPRUCE CREEK 8-41B
A10	SPRUCE CREEK 8-31C	B10	SPRUCE CREEK 8-41C
A11	SPRUCE CREEK 8-31D	B11	SPRUCE CREEK 8-41D

**8A PAD**

NOTE: SEE PAD GRADING AND  
 EROSION & SEDIMENT  
 CONTROL PLAN DESIGNED BY  
 URS ENGINEERS.



**RIFFIN & ASSOCIATES, INC.**

(307) 362-5028

1414 ELK ST., ROCK SPRINGS, WY 82901

DRAWN: 1/20/09 - WWG

SCALE: 1" = 100'

REVISED: 6/18/10 - DEH

DRG JOB No. 16975

UPDATE TO NEW COGCC RULES

EXHIBIT 2A

**CONSTRUCTION LAYOUT DRAWING 2 OF 5**

**NOBLE ENERGY, INC.**  
**SPRUCE CREEK, 5-34A, 5-34B, 5-34C, 5-34D, 5-44A,**  
**5-44B, 5-44C, 5-44D, 8-31A, 8-31B, 8-31C, 8-31D, 8-41A,**  
**8-41B, 8-41C, & 8-41D,**  
**NENE, SECTION 8, T.7S., R.94W, 6TH P.M.**  
**GARFIELD COUNTY, COLORADO**

UNGRADED ELEVATION: 6454.6'  
FINISHED ELEVATION: 6444.5'  
APPROX. AREA OF DIST.: 4.3± ACRES

SLOT	WELL NAME	SLOT	WELL NAME
A1	SPRUCE CREEK 5-34A	B1	SPRUCE CREEK 5-44A
A2	SPRUCE CREEK 5-34B	B2	SPRUCE CREEK 5-44B
A3	OPEN	B3	OPEN
A4	OPEN	B4	OPEN
A5	SPRUCE CREEK 5-34C	B5	SPRUCE CREEK 5-44C
A6	SPRUCE CREEK 5-34D	B6	SPRUCE CREEK 5-44D
A7	OPEN	B7	OPEN
A8	SPRUCE CREEK 8-31A	B8	SPRUCE CREEK 8-41A
A9	SPRUCE CREEK 8-31B	B9	SPRUCE CREEK 8-41B
A10	SPRUCE CREEK 8-31C	B10	SPRUCE CREEK 8-41C
A11	SPRUCE CREEK 8-31D	B11	SPRUCE CREEK 8-41D

NOTE: THE EARTH QUANTITIES ON  
THIS DRAWING ARE ESTIMATED  
AND THE USE OF IS AT THE  
RESPONSIBILITY OF THE USER.

NOTE: SEE PAD GRADING AND  
EROSION & SEDIMENT  
CONTROL PLAN DESIGNED BY  
URS ENGINEERS.

8A PAD



**RIFFIN & ASSOCIATES, INC.**  
1414 ELK ST., ROCK SPRINGS, WY 82901

(307) 362-5028

**DRAWN: 1/20/09 - WWG**

**SCALE: 1" = 100'**

REVISÉ: 6/18/10 - DEH

**DRG JOB No. 16975**

### UPDATE TO NEW COGCC RULES

EXHIBIT 2B

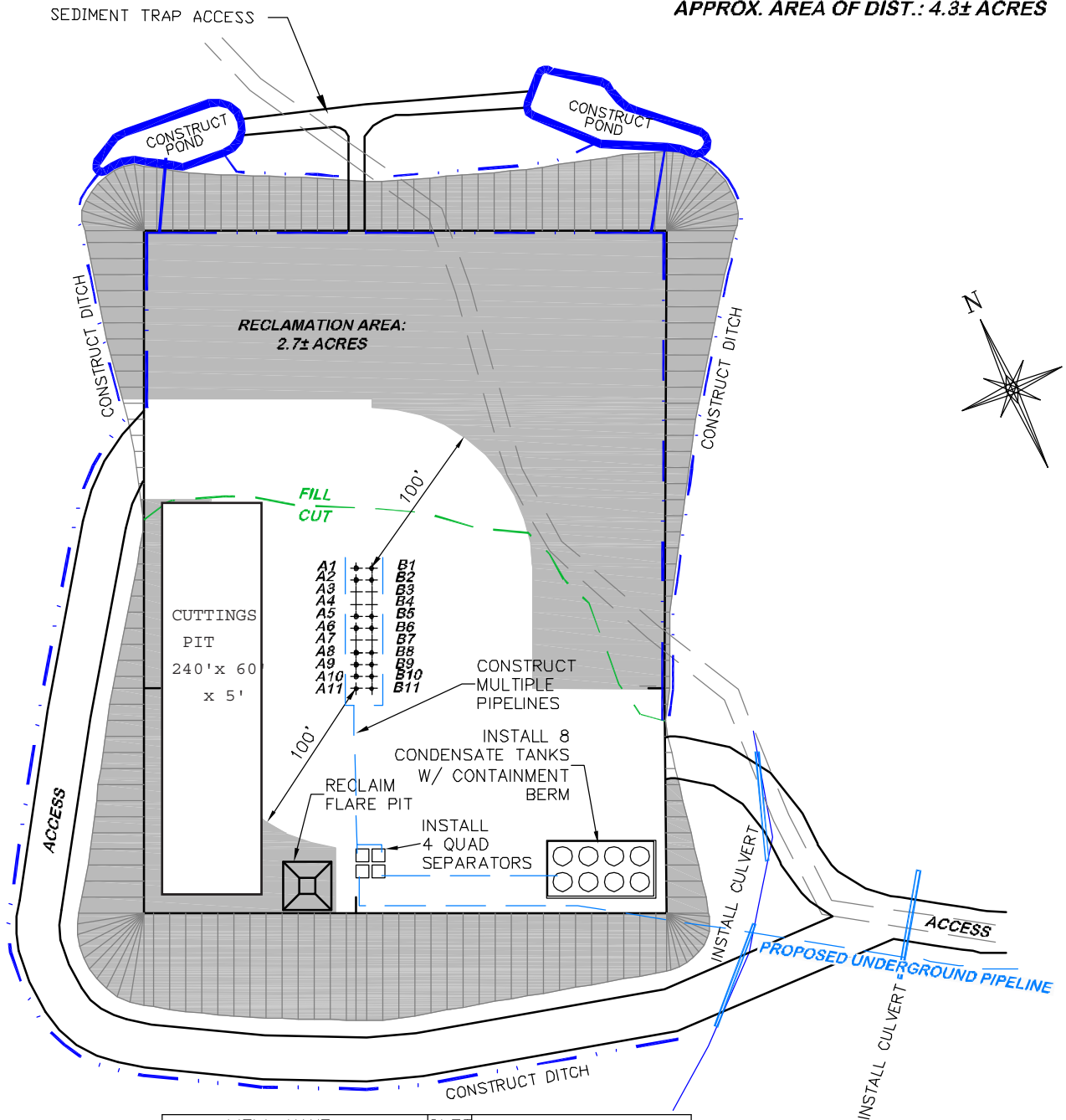
**CONSTRUCTION LAYOUT DRAWING 3 OF 5**

**NOBLE ENERGY, INC.**

**SPRUCE CREEK, 5-34A, 5-34B, 5-34C, 5-34D, 5-44A,  
5-44B, 5-44C, 5-44D, 8-31A, 8-31B, 8-31C, 8-31D, 8-41A,  
8-41B, 8-41C, & 8-41D,  
NENE, SECTION 8, T.7S., R.94W, 6TH P.M.  
GARFIELD COUNTY, COLORADO**

# RECLAMATION PLAN

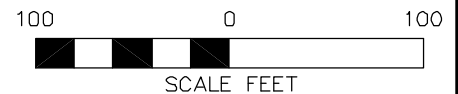
UNGRADED ELEVATION: 6454.6'  
FINISHED ELEVATION: 6444.5'  
APPROX. AREA OF DIST.: 4.3± ACRES



SLOT	WELL NAME	SLOT	WELL NAME
A1	SPRUCE CREEK 5-34A	B1	SPRUCE CREEK 5-44A
A2	SPRUCE CREEK 5-34B	B2	SPRUCE CREEK 5-44B
A3	OPEN	B3	OPEN
A4	OPEN	B4	OPEN
A5	SPRUCE CREEK 5-34C	B5	SPRUCE CREEK 5-44C
A6	SPRUCE CREEK 5-34D	B6	SPRUCE CREEK 5-44D
A7	OPEN	B7	OPEN
A8	SPRUCE CREEK 8-31A	B8	SPRUCE CREEK 8-41A
A9	SPRUCE CREEK 8-31B	B9	SPRUCE CREEK 8-41B
A10	SPRUCE CREEK 8-31C	B10	SPRUCE CREEK 8-41C
A11	SPRUCE CREEK 8-31D	B11	SPRUCE CREEK 8-41D

**8A PAD**

NOTE: SEE PAD GRADING AND EROSION & SEDIMENT CONTROL PLAN DESIGNED BY URS ENGINEERS.



**BEFORE DIGGING  
CALL FOR  
UTILITY LINE LOCATION**

NOTE: THE EARTH QUANTITIES ON THIS DRAWING ARE ESTIMATED AND THE USE OF IS AT THE RESPONSIBILITY OF THE USER.



**DRG RIFFIN & ASSOCIATES, INC.**  
1414 ELK ST., ROCK SPRINGS, WY 82901

(307) 362-5028

DRAWN: 6/18/10 - DEH

REVISED: N/A

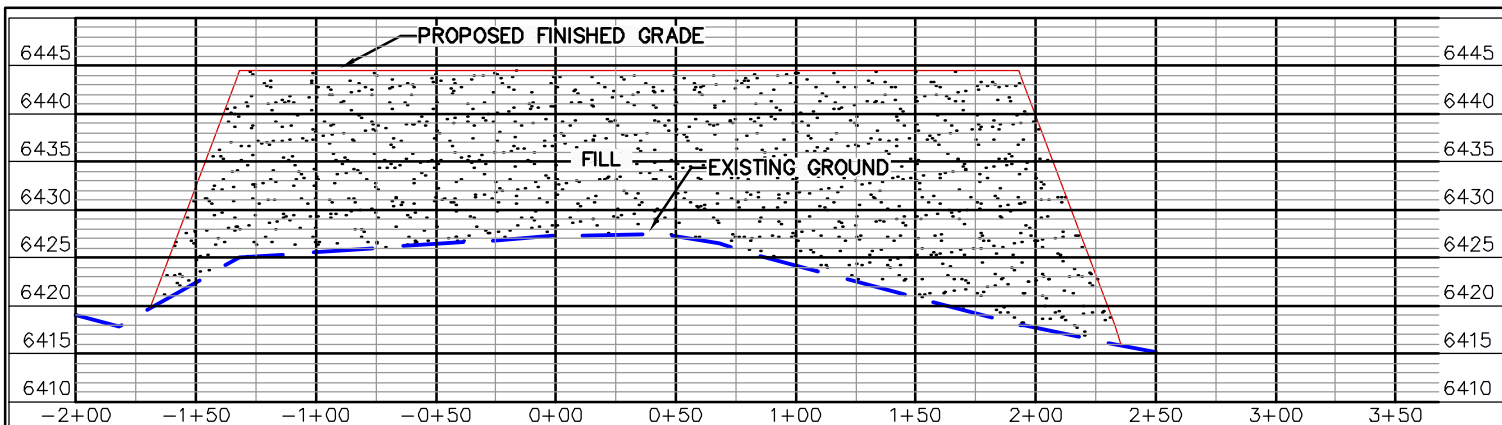
SCALE: 1" = 100'

DRG JOB No. 16975

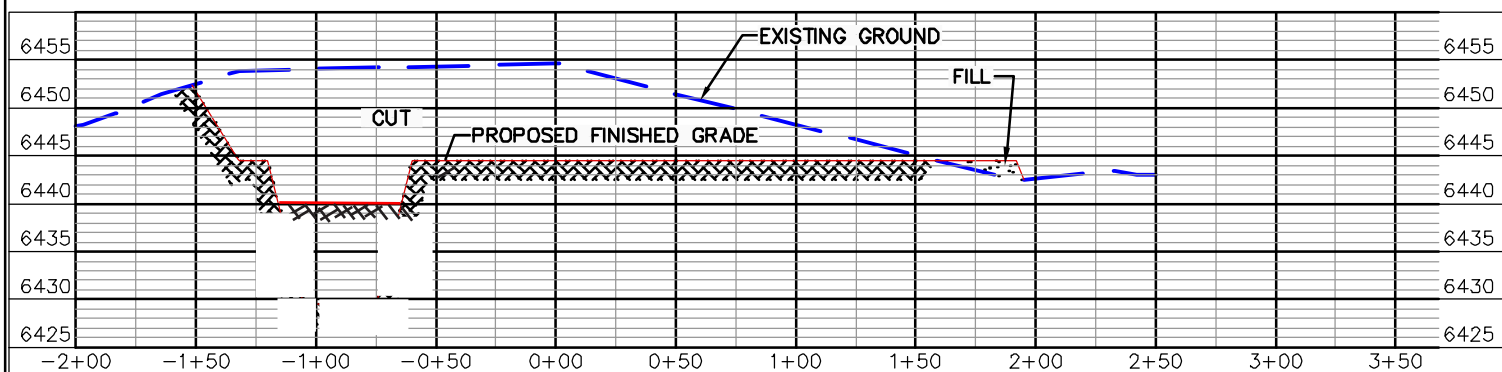
EXHIBIT 2C

**CONSTRUCTION LAYOUT DRAWING 4 OF 5**

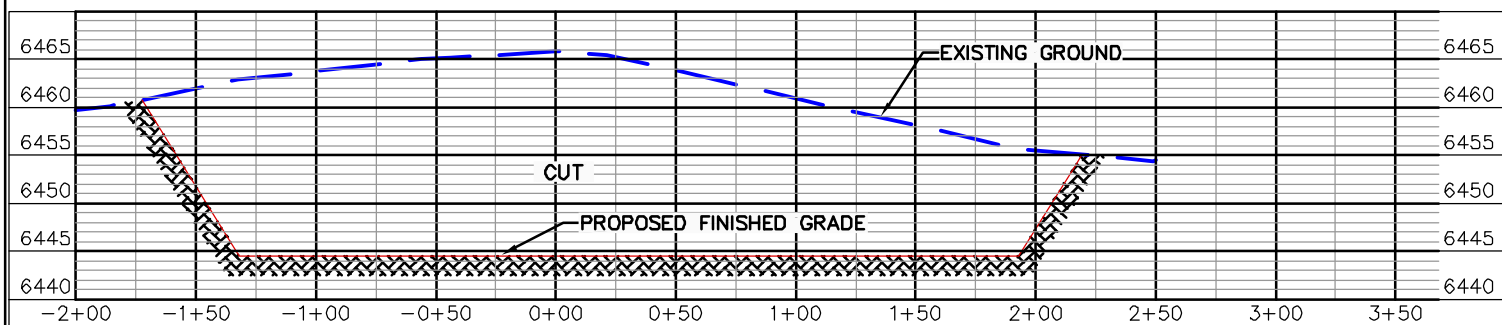
**NOBLE ENERGY, INC.**  
**SPRUCE CREEK, 5-34A, 5-34B, 5-34C, 5-34D, 5-44A, 5-44B, 5-44C, 5-44D, 8-31A, 8-31B, 8-31C, 8-31D, 8-41A, 8-41B, 8-41C, & 8-41D,**  
**NENE, SECTION 8, T.7S., R.94W, 6TH P.M.**  
**GARFIELD COUNTY, COLORADO**



**CROSS SECTION A**



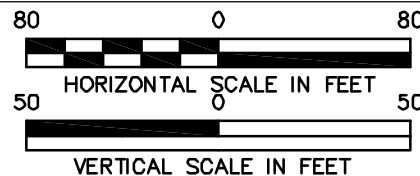
**CROSS SECTION B**



**CROSS SECTION C**

FINISHED ELEVATION = 6444.5

**8A PAD**



(307) 362-5028

**DRG RIFFIN & ASSOCIATES, INC.**  
1414 ELK ST., ROCK SPRINGS, WY 82901

DRAWN: 9/12/08 - RAB

HORZ. 1" = 80' VERT. 1" = 50'

REVISED: 6/18/10 - DEH

DRG JOB No. 16975

UPDATE TO NEW COGCC RULES

EXHIBIT 3

**CONSTRUCTION LAYOUT DRAWING 5 OF 5**

**NOBLE ENERGY, INC.**  
**SPRUCE CREEK, 5-34A, 5-34B, 5-34C, 5-34D, 5-44A,**  
**5-44B, 5-44C, 5-44D, 8-31A, 8-31B, 8-31C, 8-31D, 8-41A,**  
**8-41B, 8-41C, & 8-41D,**  
**NENE, SECTION 8, T.7S., R94W, 6TH P.M.**  
**GARFIELD COUNTY, COLORADO**