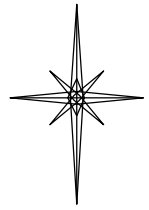
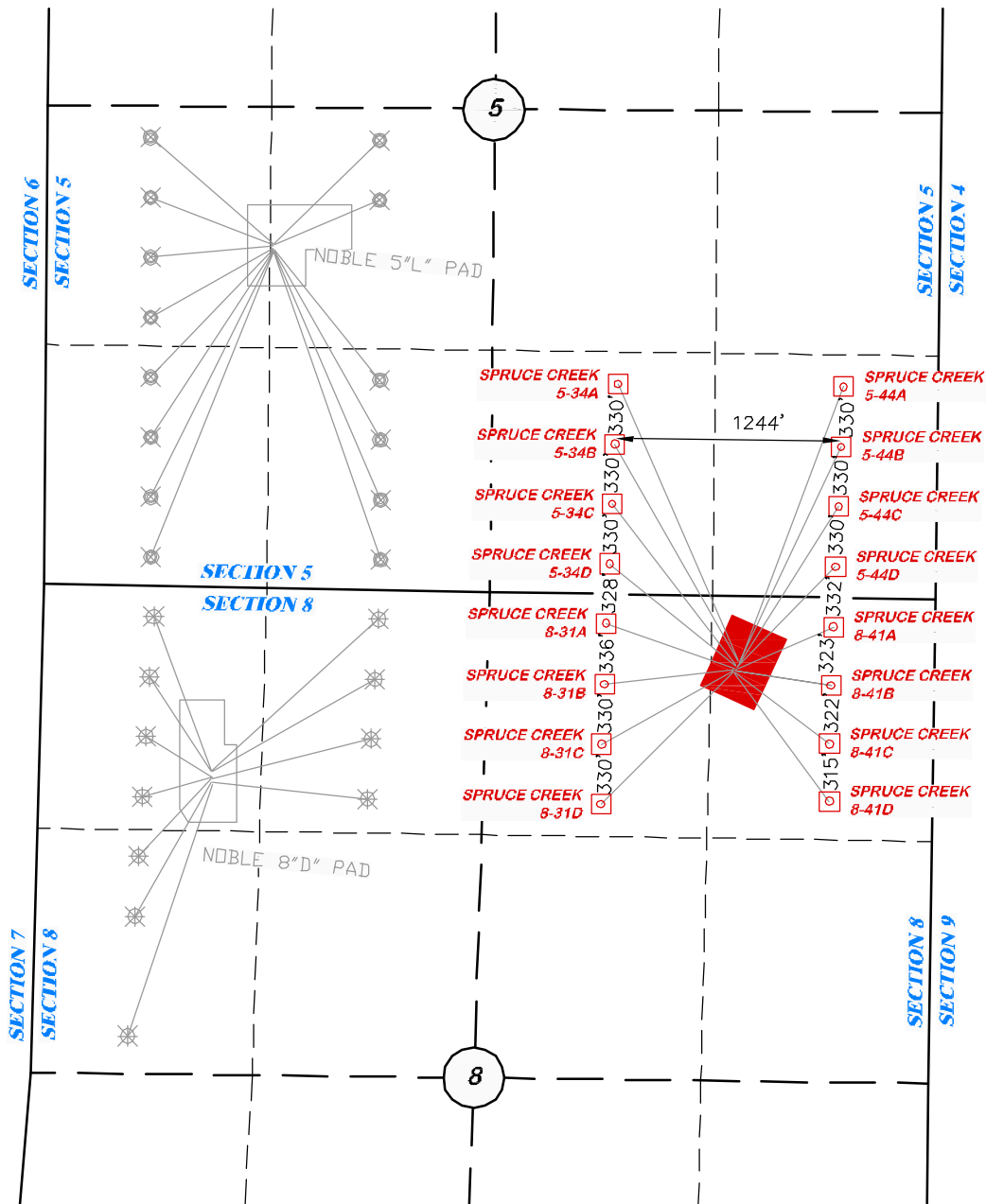


T7S

N



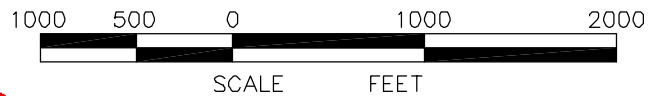
SCALE: 1" = 1000'



R 94 W

LEGEND:

- ✖ PROPOSED BOTTOM HOLE LOCATION FOR 8D PAD
- ✖ PROPOSED BOTTOM HOLE LOCATION FOR 5L PAD
- PROPOSED BOTTOM HOLE LOCATION FOR 20F PAD



8A PAD



RIFFIN & ASSOCIATES, INC.
1414 ELK ST., ROCK SPRINGS, WY 82901

(307) 362-5028

MULTI-WELL PLAN

NOBLE ENERGY, INC.

SPRUCE CREEK, 5-34A, 5-34B, 5-34C, 5-34D, 5-44A, 5-44B, 5-44C, 5-44D, 8-31A, 8-31B, 8-31C, 8-31D, 8-41A, 8-41B, 8-41C, & 8-41D, NENE, SECTION 8, T. 7S., R. 94W, 6TH P.M., GARFIELD COUNTY, COLORADO
PAD LOCATION IN THE NE 1/4 OF NE 1/4 OF SECTION 8, T. 7 S., R. 94 W., 6th P.M. GARFIELD COUNTY, COLORADO

DRAWN: 6/18/10 - DEH

SCALE: 1" = 1000'

REVISED: N/A

JOB No. 16975

EXHIBIT 4