

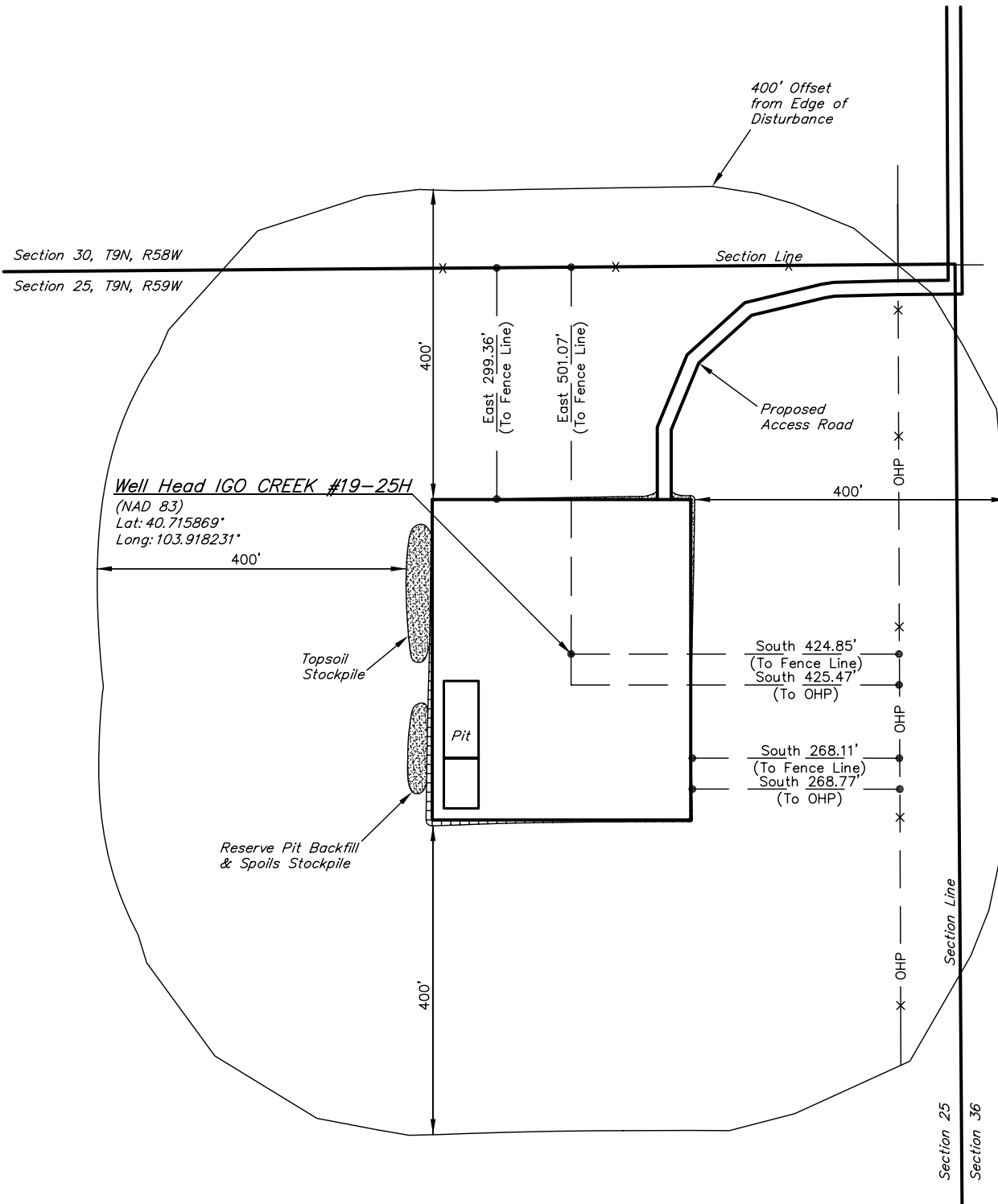
EOG RESOURCES, INC.

ADDENDUM TO LEGAL PLAT FOR

IGO CREEK #19-25H
SECTION 25, T9N, R59W, 6th P.M.
501' FSL 501' FEL



SCALE: 1" = 200'
DATE: 1-5-11
DRAWN BY: M.D.



UINTAH ENGINEERING & LAND SURVEYING
85 So. 200 East * Vernal, Utah 84078 * (435) 789-1017

EOG RESOURCES, INC.

FIGURE #2

CONSTRUCTION LAYOUT CROSS SECTION FOR

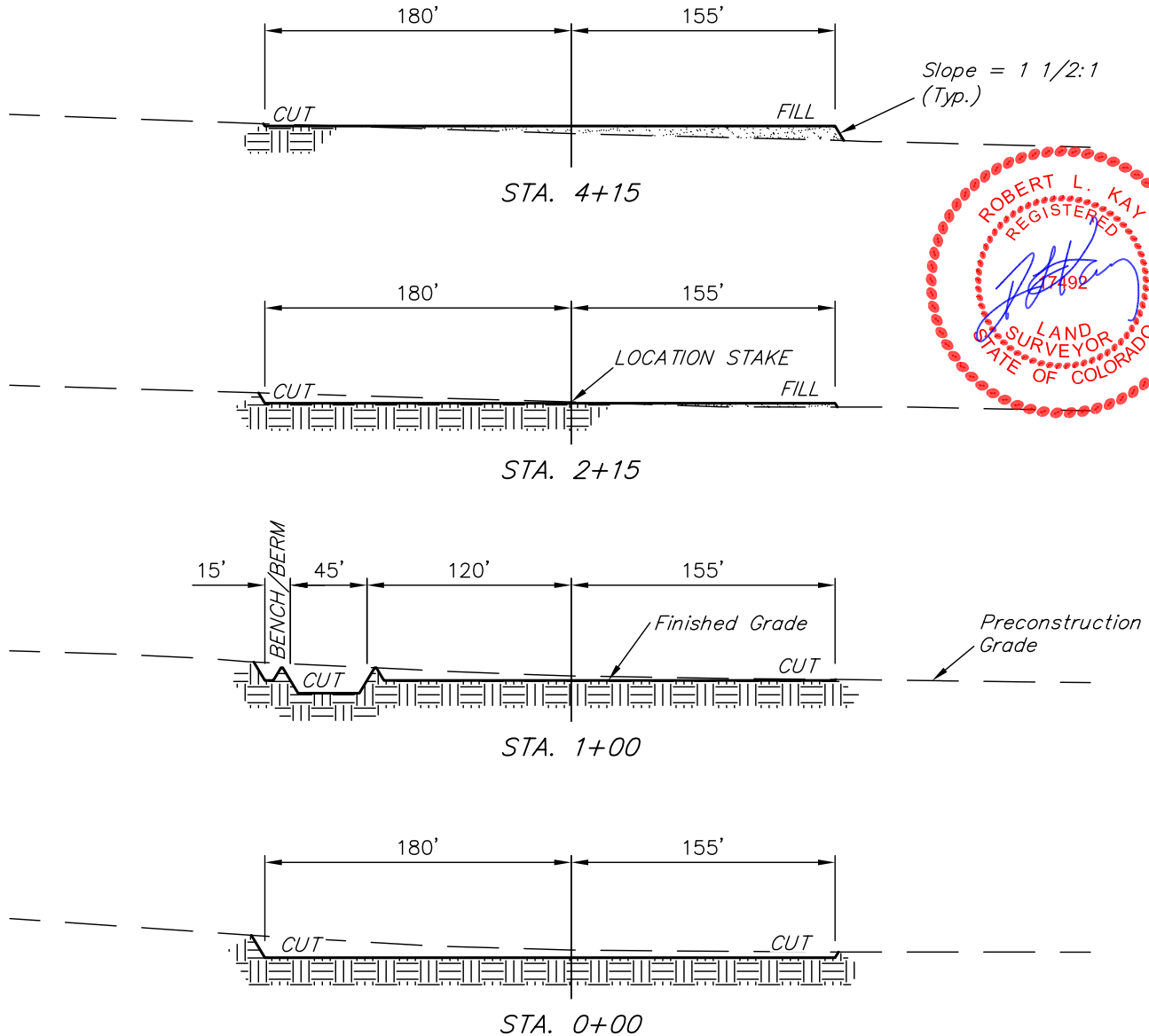
IGO CREEK #19-25H

SECTION 25, T9N, R59W, 6th P.M.

501' FSL 501' FEL

X-Section
Scale
1" = 100'

DATE: 1-5-11
DRAWN BY: M.D.



NOTE:

Topsoil should not be Stripped Below Finished Grade on Substructure Area.

APPROXIMATE ACREAGES
WELL SITE DISTURBANCE = ± 3.949 ACRES
ACCESS ROAD DISTURBANCE = ± 4.010 ACRES
TOTAL = ± 7.959 ACRES

* NOTE:
FILL QUANTITY INCLUDES 5% FOR COMPACTION

APPROXIMATE YARDAGES

(6") Topsoil Stripping = 2,700 Cu. Yds.
Remaining Location = 3,980 Cu. Yds.
TOTAL CUT = 6,680 CU.YDS.
FILL = 3,630 CU.YDS.

EXCESS MATERIAL = 3,050 Cu. Yds.
Topsoil & Pit Backfill = 3,050 Cu. Yds.
(1/2 Pit Vol.)
EXCESS UNBALANCE = 0 Cu. Yds.
(After Interim Rehabilitation)

UINTAH ENGINEERING & LAND SURVEYING
85 So. 200 East * Vernal, Utah 84078 * (435) 789-1017

EOG RESOURCES, INC.

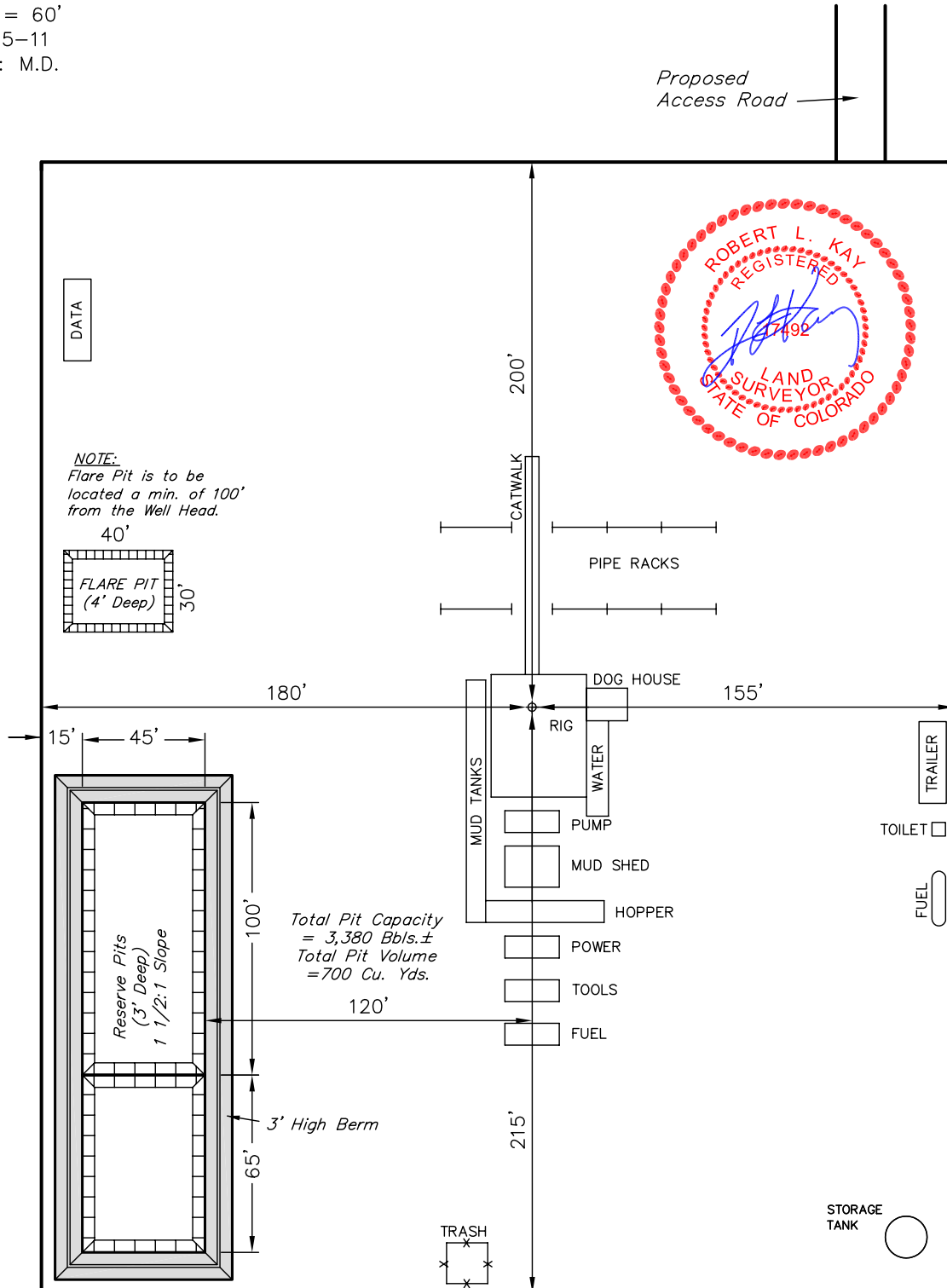
TYPICAL RIG LAYOUT FOR

IGO CREEK #19-25H
SECTION 25, T9N, R59W, 6th P.M.
501' FSL 501' FEL

FIGURE #3



SCALE: 1" = 60'
DATE: 1-5-11
DRAWN BY: M.D.

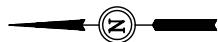


EOG RESOURCES, INC.

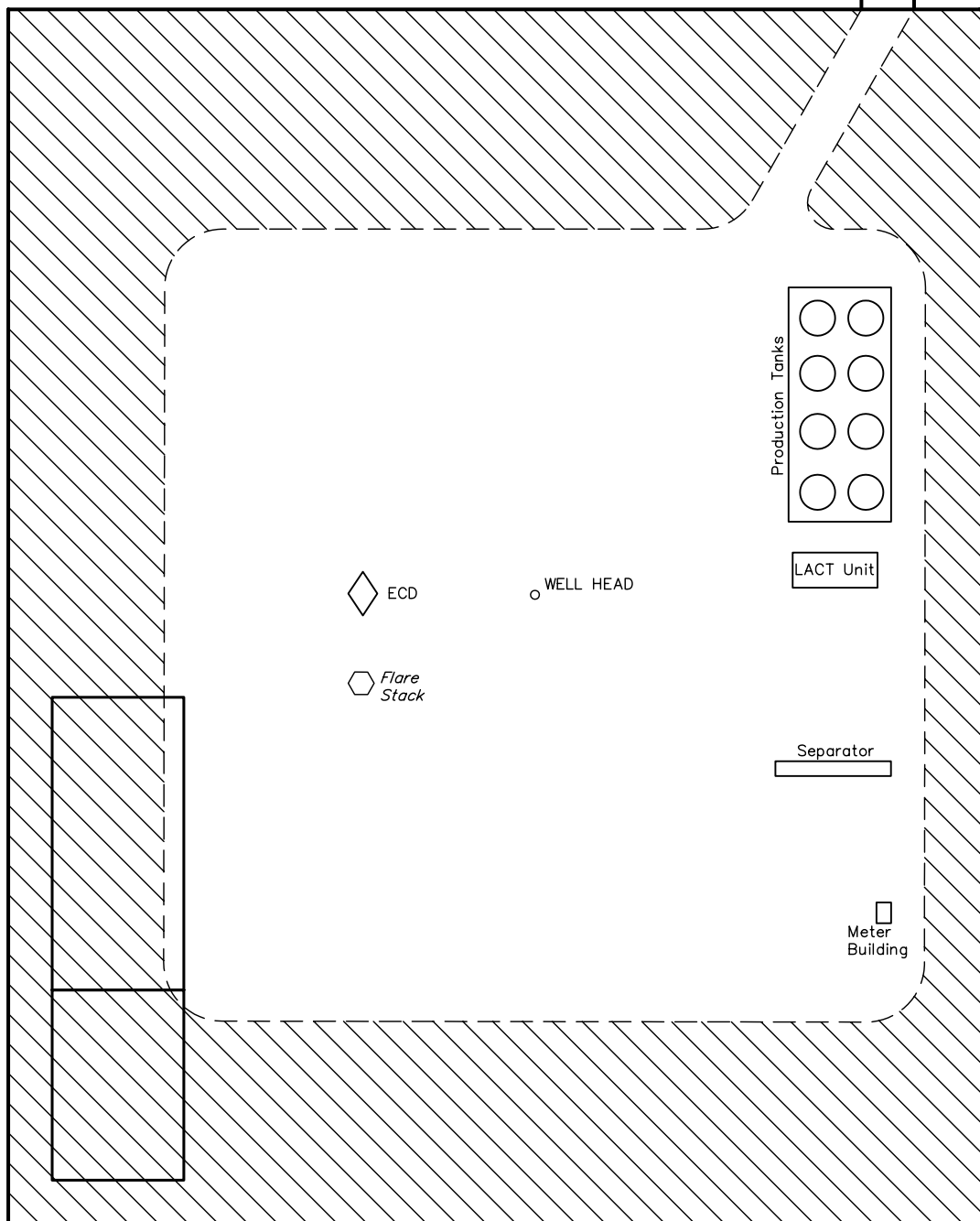
RECLAMATION DIAGRAM FOR

IGO CREEK #19-25H
SECTION 25, T9N, R59W, 6th P.M.
501' FSL 501' FEL

FIGURE #4



SCALE: 1" = 60'
DATE: 1-5-11
DRAWN BY: M.D.



APPROXIMATE ACREAGES
UN-RECLAIMED = ± 1.687 ACRES



RECLAIMED AREA

UINTAH ENGINEERING & LAND SURVEYING
85 So. 200 East * Vernal, Utah 84078 * (435) 789-1017

EOG RESOURCES, INC.

LOCATION DRAWING FOR

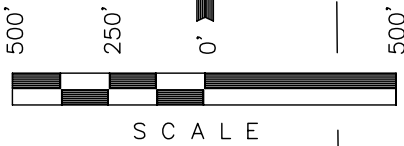
IGO CREEK #19-25H
SECTION 25, T9N, R59W, 6th P.M.
501' FSL 501' FEL

FIGURE #5

DATE: 1-5-11
DRAWN BY: M.D.

NE Cor. Sec. 25
1918 Brass Cap
Lat: 40.729119°
Long: 103.916586°

1918 Brass Cap,
0.2' High In Fence
Lat: 40.721813°
Long: 103.916497°



SCALE

25

1/4 Section Line

N38°40'W 19510.00'
(To House)

N19°00'W 31.17 Miles
(To Railroad)
N23°40'W 11270.00'
(To County Road #104)



1/16 Section Line

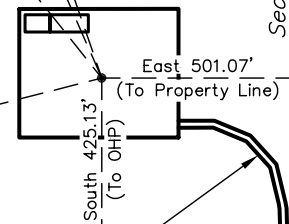
SE 1/4

1/4 Section Line

1/16 Section Line

Wade E.
Castor

S75°38'W 1036.12'
(To Water Well)



SW Cor. Sec. 25
Set Marked Stone
Lat: 40.714378°
Long: 103.935464°

Section Line

S89°32'42"W - 5284.34' (Meas.)

Proposed Access
Road

Private Alum. Cap,
RLS #17492
Lat: 40.714506°
Long: 103.916408°

PLANT COMMUNITY

- ☐ DISTURBED GRASSLAND
- ☐ NATIVE GRASSLAND
- ☐ SHRUB LAND
- ☐ PLAINS RIPARIAN
- ☐ MOUNTAIN RIPARIAN
- ☐ FOREST LAND
- ☐ WETLANDS AQUATIC
- ☐ ALPINE
- ☐ OTHER (Describe): _____

CURRENT LAND USE

- CROP LAND: ☐ IRRIGATED ☐ DRY LAND ☐ IMPROVED PASTURE ☐ HAY MEADOW ☐ CRP
- NON-CROP LAND: ☐ RANGELAND ☐ TIMBER ☐ RECREATIONAL ☐ OTHER (Describe) _____
- SUBDIVIDED: ☐ INDUSTRIAL ☐ COMMERCIAL ☐ RESIDENTIAL _____

FUTURE LAND USE

- CROP LAND: ☐ IRRIGATED ☐ DRY LAND ☐ IMPROVED PASTURE ☐ HAY MEADOW ☐ CRP
- NON-CROP LAND: ☐ RANGELAND ☐ TIMBER ☐ RECREATIONAL ☐ OTHER (Describe) _____
- SUBDIVIDED: ☐ INDUSTRIAL ☐ COMMERCIAL ☐ RESIDENTIAL _____

UINTAH ENGINEERING & LAND SURVEYING

85 So. 200 East * Vernal, Utah 84078 * (435) 789-1017