

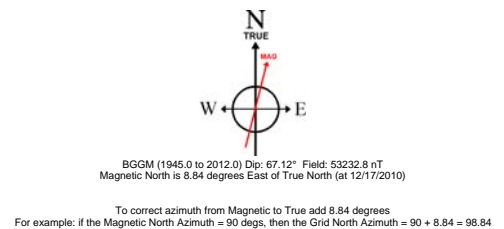
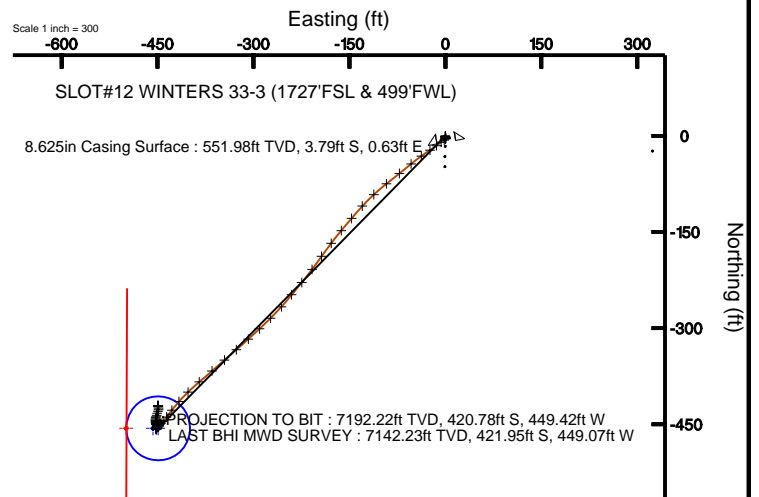
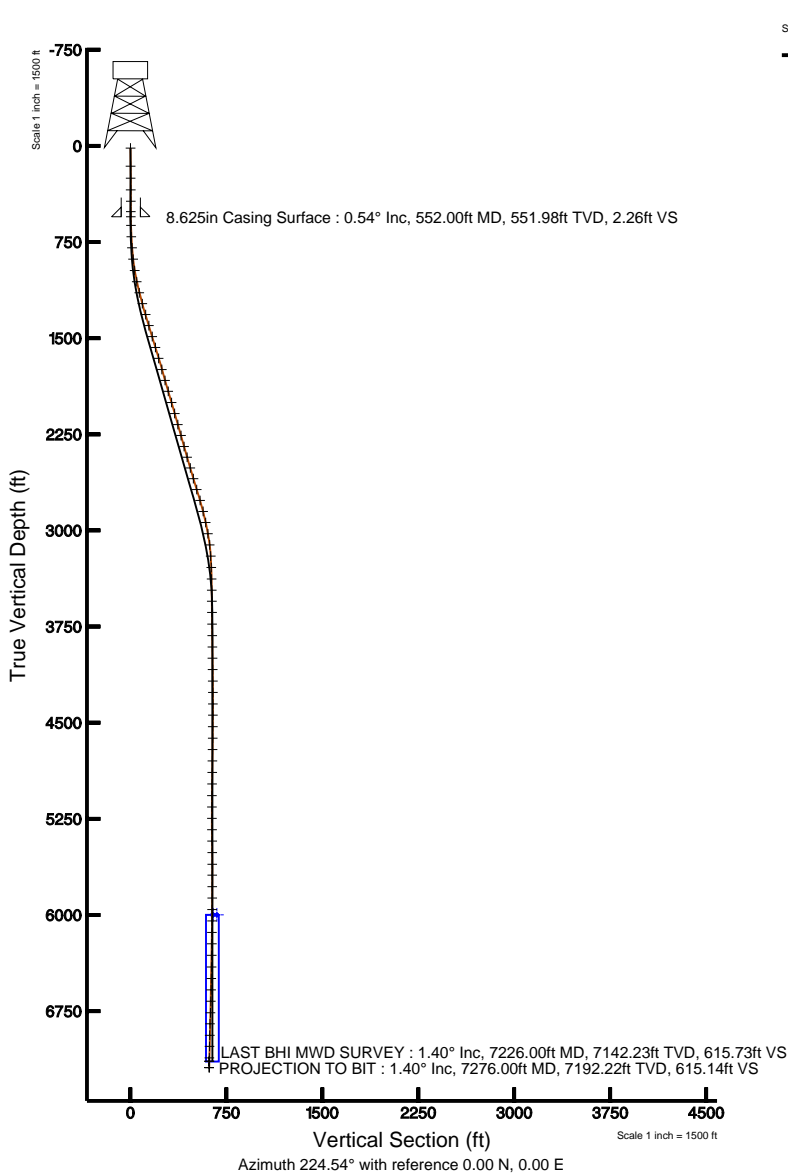


# KERR MCGEE OIL & GAS ONSHORE LP

Location: COLORADO Slot: SLOT#12 WINTERS 33-3 (1727'FSL & 499'FWL)  
Field: WELD COUNTY (KERR MCGEE) Well: WINTERS 33-3  
Facility: SEC.03-T5N-R65W Wellbore: WINTERS 33-3 PWB



Plot reference wellpath is WINTERS 33-3 (REV-A.0) PWP	
True vertical depths are referenced to XTREME 6 (RKB)	Grid System: NAD83 / Lambert Colorado State Planes, Northern Zone (501), US feet
Measured depths are referenced to XTREME 6 (RKB)	North Reference: True north
XTREME 6 (RKB) to Mean Sea Level: 4648 feet	Scale: True distance
Mean Sea Level to Mud line (Facility: SEC.03-T5N-R65W): 0 feet	Depths are in feet
Coordinates are in feet referenced to Slot	Created by: cookdamm on 2/3/2011





# Actual Wellpath Report

WINTERS 33-3 AWP

Page 1 of 5



INTEQ

## REFERENCE WELLPATH IDENTIFICATION

Operator	KERR MCGEE OIL & GAS ONSHORE LP	Slot	SLOT#12 WINTERS 33-3 (1727'FSL & 499'FWL)
Area	COLORADO	Well	WINTERS 33-3
Field	WELD COUNTY (KERR MCGEE)	Wellbore	WINTERS 33-3 AWB
Facility	SEC.03-T5N-R65W		

## REPORT SETUP INFORMATION

Projection System	NAD83 / Lambert Colorado State Planes, Northern Zone (501), US feet	Software System	WellArchitect® 2.0
North Reference	True	User	Cookdanm
Scale	0.999962	Report Generated	2/3/2011 at 1:08:12 PM
Convergence at slot	0.54° East	Database/Source file	Denver Server/WINTERS_33-3_AWB.xml

## WELLPATH LOCATION

	Local coordinates		Grid coordinates		Geographic coordinates	
	North[ft]	East[ft]	Easting[USft]	Northing[USft]	Latitude	Longitude
Slot Location	-1514.82	-43.15	3234664.97	1399067.31	40°25'32.808"N	104°39'25.542"W
Facility Reference Pt			3234693.72	1400582.41	40°25'47.777"N	104°39'24.984"W
Field Reference Pt			3197771.84	1268891.29	40°04'09.600"N	104°47'36.000"W

## WELLPATH DATUM

Calculation method	Minimum curvature	XTREME 6 (RKB) to Facility Vertical Datum	4648.00ft
Horizontal Reference Pt	Slot	XTREME 6 (RKB) to Mean Sea Level	4648.00ft
Vertical Reference Pt	XTREME 6 (RKB)	Facility Vertical Datum to Mud Line (Facility)	0.00ft
MD Reference Pt	XTREME 6 (RKB)	Section Origin	N 0.00, E 0.00 ft
Field Vertical Reference	Mean Sea Level	Section Azimuth	224.54°



# Actual Wellpath Report

WINTERS 33-3 AWP

Page 2 of 5



INTEQ

## REFERENCE WELLPATH IDENTIFICATION

Operator	KERR MCGEE OIL & GAS ONSHORE LP	Slot	SLOT#12 WINTERS 33-3 (1727'FSL & 499'FWL)
Area	COLORADO	Well	WINTERS 33-3
Field	WELD COUNTY (KERR MCGEE)	Wellbore	WINTERS 33-3 AWB
Facility	SEC.03-T5N-R65W		

## WELLPATH DATA (84 stations) † = interpolated/extrapolated station

MD [ft]	Inclination [°]	Azimuth [°]	TVD [ft]	Vert Sect [ft]	North [ft]	East [ft]	DLS [°/100ft]	Comments
0.00†	0.000	181.100	0.00	0.00	0.00	0.00	0.00	
16.00	0.000	181.100	16.00	0.00	0.00	0.00	0.00	
158.00	0.400	181.100	158.00	0.36	-0.50	-0.01	0.28	
251.00	0.600	172.000	251.00	0.89	-1.30	0.05	0.23	
342.00	0.600	168.500	341.99	1.45	-2.24	0.21	0.04	
431.00	0.400	174.400	430.99	1.91	-3.01	0.34	0.23	
512.00	0.400	137.900	511.99	2.11	-3.50	0.55	0.31	
619.00	1.100	211.000	618.98	3.13	-4.66	0.28	0.99	
708.00	2.600	237.700	707.93	5.92	-6.47	-1.87	1.90	
795.00	4.900	235.300	794.74	11.49	-9.64	-6.59	2.65	
884.00	6.700	230.700	883.28	20.39	-15.09	-13.74	2.09	
973.00	9.400	238.800	971.40	32.60	-22.14	-23.97	3.28	
1062.00	11.900	233.800	1058.86	48.70	-31.33	-37.60	2.99	
1151.00	14.300	230.700	1145.54	68.69	-43.71	-53.51	2.81	
1239.00	16.800	231.400	1230.31	92.13	-58.53	-71.86	2.85	
1328.00	17.000	231.400	1315.47	117.81	-74.68	-92.08	0.22	
1418.00	16.500	227.500	1401.65	143.64	-91.52	-111.79	1.37	
1507.00	16.800	222.800	1486.92	169.12	-109.50	-129.85	1.55	
1596.00	16.500	219.400	1572.19	194.56	-128.70	-146.61	1.15	
1685.00	16.000	220.800	1657.64	219.39	-147.75	-162.65	0.71	
1775.00	16.900	216.600	1743.95	244.73	-167.64	-178.55	1.66	
1864.00	16.100	216.600	1829.29	269.76	-187.94	-193.62	0.90	
1953.00	16.800	215.500	1914.65	294.69	-208.32	-208.45	0.86	
2044.00	16.600	220.800	2001.81	320.65	-228.86	-224.58	1.69	
2133.00	15.800	219.100	2087.28	345.40	-247.89	-240.53	1.04	
2223.00	15.900	220.800	2173.86	369.89	-266.73	-256.31	0.53	
2312.00	16.300	226.500	2259.37	394.54	-284.56	-273.34	1.83	
2401.00	14.900	226.100	2345.09	418.47	-301.09	-290.64	1.58	
2488.00	16.900	228.600	2428.76	442.26	-317.21	-308.19	2.43	
2575.00	16.400	228.600	2512.11	467.13	-333.70	-326.89	0.57	
2662.00	16.500	229.300	2595.55	491.69	-349.87	-345.47	0.26	
2751.00	17.300	228.600	2680.71	517.49	-366.87	-364.98	0.93	
2840.00	16.900	230.000	2765.77	543.56	-383.93	-384.81	0.64	
2929.00	14.300	225.100	2851.49	567.44	-400.01	-402.51	3.27	
3018.00	12.100	222.200	2938.13	587.75	-414.68	-416.57	2.58	
3107.00	10.700	216.300	3025.38	605.25	-428.25	-427.72	2.05	
3195.00	6.800	220.500	3112.34	618.54	-438.80	-435.95	4.49	
3283.00	4.000	223.300	3199.94	626.80	-445.00	-441.44	3.19	
3372.00	2.000	218.400	3288.81	631.45	-448.48	-444.53	2.26	
3462.00	1.000	256.000	3378.78	633.68	-449.90	-446.27	1.50	
3549.00	0.600	234.800	3465.77	634.78	-450.34	-447.38	0.56	
3636.00	0.700	242.600	3552.77	635.73	-450.85	-448.22	0.15	
3723.00	0.700	227.900	3639.76	636.77	-451.45	-449.09	0.21	
3814.00	0.700	224.000	3730.76	637.88	-452.22	-449.89	0.05	
3904.00	0.600	204.000	3820.75	638.87	-453.05	-450.46	0.27	



# Actual Wellpath Report

WINTERS 33-3 AWP

Page 3 of 5



INTEQ

## REFERENCE WELLPATH IDENTIFICATION

Operator	KERR MCGEE OIL & GAS ONSHORE LP	Slot	SLOT#12 WINTERS 33-3 (1727'FSL & 499'FWL)
Area	COLORADO	Well	WINTERS 33-3
Field	WELD COUNTY (KERR MCGEE)	Wellbore	WINTERS 33-3 AWP
Facility	SEC.03-T5N-R65W		

## WELLPATH DATA (84 stations)

MD [ft]	Inclination [°]	Azimuth [°]	TVD [ft]	Vert Sect [ft]	North [ft]	East [ft]	DLS [°/100ft]	Comments
3993.00	0.700	201.900	3909.74	639.81	-453.98	-450.85	0.12	
4080.00	1.000	206.800	3996.73	641.02	-455.15	-451.39	0.35	
4169.00	0.600	199.000	4085.73	642.18	-456.28	-451.89	0.46	
4259.00	0.600	193.400	4175.72	643.01	-457.19	-452.16	0.07	
4348.00	0.400	177.600	4264.72	643.62	-457.95	-452.25	0.27	
4437.00	0.100	115.000	4353.72	643.81	-458.29	-452.17	0.41	
4525.00	0.300	28.900	4441.72	643.56	-458.13	-451.99	0.35	
4615.00	0.300	50.300	4531.72	643.10	-457.77	-451.69	0.12	
4704.00	0.700	350.900	4620.71	642.55	-457.08	-451.60	0.68	
4793.00	0.900	26.800	4709.70	641.56	-455.92	-451.37	0.59	
4882.00	1.000	35.600	4798.69	640.12	-454.67	-450.60	0.20	
4972.00	0.800	39.800	4888.68	638.72	-453.55	-449.74	0.23	
5062.00	0.700	54.200	4978.67	637.55	-452.74	-448.90	0.24	
5153.00	0.400	20.800	5069.67	636.72	-452.12	-448.33	0.47	
5241.00	0.200	312.200	5157.67	636.44	-451.73	-448.34	0.43	
5330.00	0.400	171.300	5246.67	636.63	-451.93	-448.40	0.64	
5419.00	0.900	166.000	5335.66	637.18	-452.92	-448.19	0.57	
5507.00	0.700	227.200	5423.65	638.08	-453.95	-448.42	0.95	
5597.00	0.500	299.600	5513.65	638.73	-454.13	-449.16	0.81	
5688.00	0.700	317.500	5604.65	638.81	-453.53	-449.88	0.30	
5774.00	0.700	316.800	5690.64	638.76	-452.76	-450.60	0.01	
5863.00	0.800	317.200	5779.63	638.71	-451.90	-451.39	0.11	
5952.00	0.700	327.700	5868.62	638.55	-450.99	-452.10	0.19	
6042.00	0.800	346.300	5958.62	638.10	-449.91	-452.55	0.29	
6131.00	0.800	345.600	6047.61	637.45	-448.71	-452.85	0.01	
6220.00	0.900	352.300	6136.60	636.70	-447.41	-453.10	0.16	
6309.00	1.100	357.600	6225.58	635.69	-445.87	-453.23	0.25	
6399.00	1.200	357.200	6315.57	634.46	-444.06	-453.31	0.11	
6490.00	1.200	2.900	6406.55	633.10	-442.16	-453.31	0.13	
6580.00	1.300	15.200	6496.52	631.51	-440.23	-452.99	0.32	
6669.00	1.300	23.300	6585.50	629.69	-438.33	-452.33	0.21	
6758.00	1.700	19.400	6674.47	627.55	-436.16	-451.49	0.46	
6848.00	2.500	11.700	6764.41	624.70	-432.98	-450.65	0.94	
6934.00	1.900	35.200	6850.35	621.71	-429.98	-449.44	1.25	
7023.00	1.700	1.500	6939.31	619.29	-427.45	-448.56	1.19	
7110.00	1.700	356.200	7026.27	617.49	-424.87	-448.61	0.18	
7200.00	1.300	347.800	7116.24	616.04	-422.54	-448.92	0.51	
7226.00	1.400	343.500	7142.23	615.73	-421.95	-449.07	0.55	LAST BHI MWD SURVEY
7276.00	1.400	343.500	7192.22	615.14	-420.78	-449.42	0.00	PROJECTION TO BIT



# Actual Wellpath Report

WINTERS 33-3 AWP

Page 4 of 5



INTEQ

## REFERENCE WELLPATH IDENTIFICATION

Operator	KERR MCGEE OIL & GAS ONSHORE LP	Slot	SLOT#12 WINTERS 33-3 (1727'FSL & 499'FWL)
Area	COLORADO	Well	WINTERS 33-3
Field	WELD COUNTY (KERR MCGEE)	Wellbore	WINTERS 33-3 AWP
Facility	SEC.03-T5N-R65W		

## HOLE & CASING SECTIONS Ref Wellbore: WINTERS 33-3 AWP Ref Wellpath: WINTERS 33-3 AWP

String/Diameter	Start MD [ft]	End MD [ft]	Interval [ft]	Start TVD [ft]	End TVD [ft]	Start N/S [ft]	Start E/W [ft]	End N/S [ft]	End E/W [ft]
12.25in Open Hole	16.00	567.00	551.00	16.00	566.98	0.00	0.00	-3.94	0.61
8.625in Casing Surface	16.00	552.00	536.00	16.00	551.98	0.00	0.00	-3.79	0.63
7.875in Open Hole	552.00	7276.00	6724.00	551.98	7192.22	-3.79	0.63	-420.78	-449.42

## TARGETS

Name	MD [ft]	TVD [ft]	North [ft]	East [ft]	Grid East [srv ft]	Grid North [srv ft]	Latitude	Longitude	Shape
WINTERS 33-3 BHL ON PLAT (1280'FSL & 42'FWL, REV-1)		6000.00	-456.48	-457.17	3234212.18	1398606.52	40°25'28.297"N	104°39'31.453"W	point
WINTERS 33-3 GEO TARGET 50' RADIUS (1280'FSL & 50'FWL, REV-2)		6000.00	-456.48	-449.17	3234220.17	1398606.60	40°25'28.297"N	104°39'31.350"W	circle
WINTERS 33-3 HARDLINE 50'W OF GEO TARGET		6000.00	-456.48	-499.17	3234170.18	1398606.13	40°25'28.297"N	104°39'31.996"W	point

## WELLPATH COMPOSITION Ref Wellbore: WINTERS 33-3 AWP Ref Wellpath: WINTERS 33-3 AWP

Start MD [ft]	End MD [ft]	Positional Uncertainty Model	Log Name/Comment	Wellbore
16.00	512.00	NaviTrak (Standard)	BHI MWD SURVEY 12.25 HOLE <158-512>	WINTERS 33-3 AWP
512.00	7226.00	NaviTrak (Standard)	BHI MWD 7.875 HOLE <619-7226>	WINTERS 33-3 AWP
7226.00	7276.00	Blind Drilling (std)	Projection to bit	WINTERS 33-3 AWP



# Actual Wellpath Report

WINTERS 33-3 AWP

Page 5 of 5



**INTEQ**

## REFERENCE WELLPATH IDENTIFICATION

Operator	KERR MCGEE OIL & GAS ONSHORE LP	Slot	SLOT#12 WINTERS 33-3 (1727'FSL & 499'FWL)
Area	COLORADO	Well	WINTERS 33-3
Field	WELD COUNTY (KERR MCGEE)	Wellbore	WINTERS 33-3 AWB
Facility	SEC.03-T5N-R65W		

## WELLPATH COMMENTS

MD [ft]	Inclination [°]	Azimuth [°]	TVD [ft]	Comment
7226.00	1.400	343.500	7142.23	LAST BHI MWD SURVEY
7276.00	1.400	343.500	7192.22	PROJECTION TO BIT