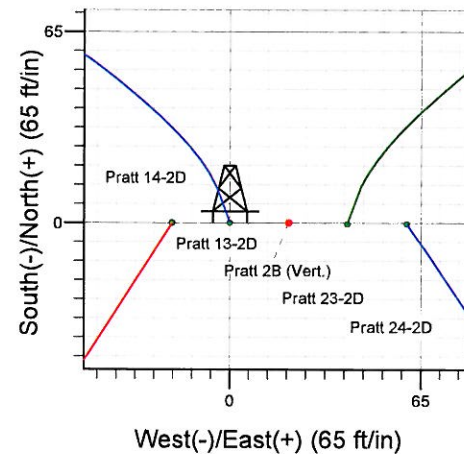
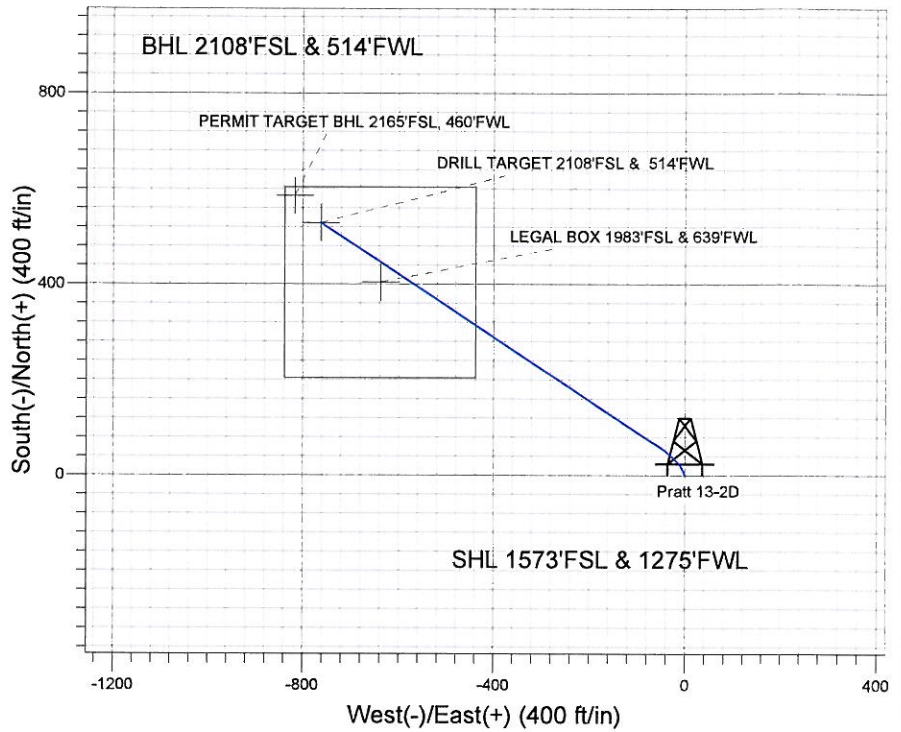
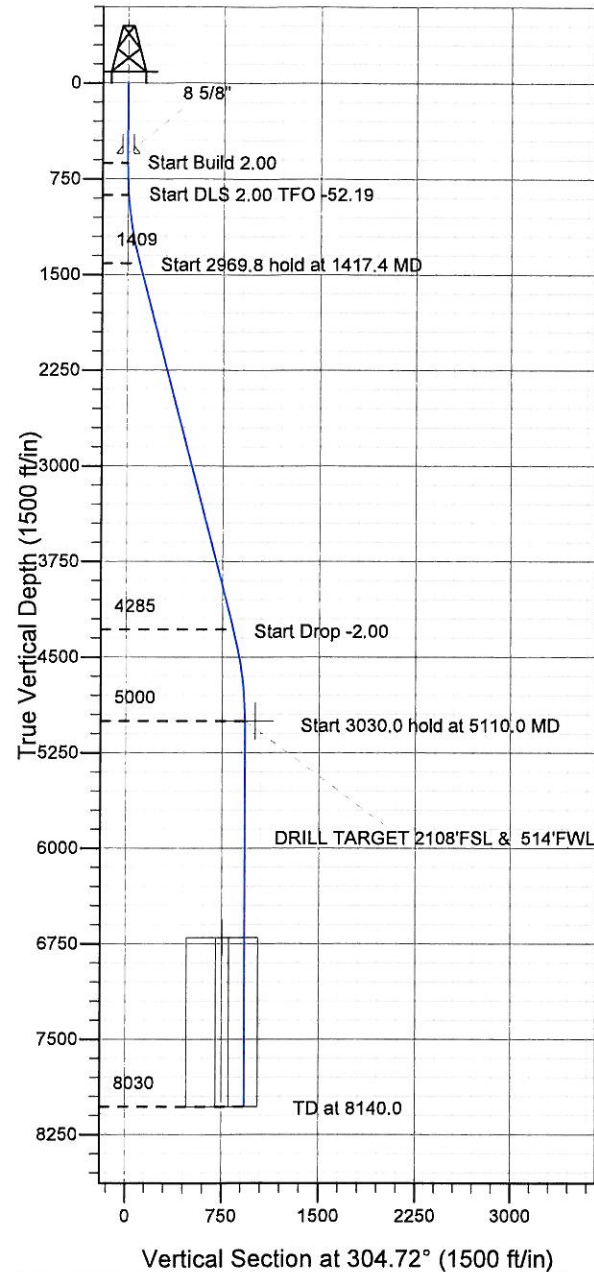


Surface Location: Pratt 14-2D Pad Sec.2-T4N-R68W
 North American Datum 1983 US State Plane 1983 Colorado Northern Zone
 Ground Elevation: 5004.0
 +N/-S +E/-W Northing Easting Latitude Longitude Slot
 0.0 0.0 1367080.53 3146281.59 40.339849 -104.975234
 Original Well Elev WELL @ 5017.0ft (Original Well Elev)

Synergy Resources



Pratt 14-2D Pad Sec.2-T4N-R68W
 Pratt 13-2D
 Plan #1 (2-08-11)
 11:05, February 15 2011



Azimuths to True North
 Magnetic North: 9.02°

Magnetic Field
 Strength: 53110.1snT
 Dip Angle: 66.98°
 Date: 2/15/2011
 Model: IGRF2010

WELLBORE TARGET DETAILS (LAT/LONG)

Name	TVD	+N/-S	+E/-W	Latitude	Longitude	Shape
DRILL TARGET 2108'FSL & 514'FWL	5000.0	528.5	-762.8	40.341300	-104.977970	Point
PERMIT TARGET BHL 2165'FSL, 460'FWL	5000.0	585.5	-816.8	40.341456	-104.978164	Point
LEGAL BOX 1983'FSL & 639'FWL	6700.0	403.5	-637.8	40.340957	-104.977522	Rectangle (Sides: L400.0 W400.0)

SECTION DETAILS

Sec	MD	Inc	Azi	TVD	+N/-S	+E/-W	DLeg	TFace	VSec	Target
1	0.0	0.00	0.00	0.0	0.0	0.0	0.00	0.00	0.0	
2	625.0	0.00	0.00	625.0	0.0	0.0	0.00	0.00	0.0	
3	875.0	5.00	340.00	874.7	10.2	-3.7	2.00	340.00	8.9	
4	1417.4	14.46	303.44	1409.0	69.9	-68.5	2.00	-52.19	96.1	
5	4387.2	14.46	303.44	4284.8	478.5	-687.1	0.00	0.00	837.3	
6	5110.0	0.00	0.00	5000.0	528.5	-762.8	2.00	180.00	928.0	DRILL TARGET 2108'FSL & 514'FWL
7	8140.0	0.00	0.00	8030.0	528.5	-762.8	0.00	0.00	928.0	



Directional

Synergy Resources

SEC.2-T4N-R68W

Pratt 14-2D Pad Sec.2-T4N-R68W

Pratt 13-2D

Wellbore #1

Plan: Plan #1 (2-08-11)

Standard Planning Report

15 February, 2011

Measured Depth (ft)	Inclination (°)	Azimuth (°)	Vertical Depth (ft)	+N/-S (ft)	+E/-W (ft)	Dogleg Rate (°/100ft)	Build Rate (°/100ft)	Turn Rate (°/100ft)	TFO (°)	Target
0.0	0.00	0.00	0.0	0.0	0.0	0.00	0.00	0.00	0.00	
625.0	0.00	0.00	625.0	0.0	0.0	0.00	0.00	0.00	0.00	
875.0	5.00	340.00	874.7	10.2	-3.7	2.00	2.00	0.00	340.00	
1,417.4	14.46	303.44	1,409.0	69.9	-68.5	2.00	1.74	-6.74	-52.19	
4,387.2	14.46	303.44	4,284.8	478.5	-687.1	0.00	0.00	0.00	0.00	
5,110.0	0.00	0.00	5,000.0	528.5	-762.8	2.00	-2.00	0.00	180.00	DRILL TARGET 21
8,140.0	0.00	0.00	8,030.0	528.5	-762.8	0.00	0.00	0.00	0.00	

Database:	Landmark	Local Co-ordinate Reference:	Well Pratt 13-2D
Company:	Synergy Resources	TVD Reference:	WELL @ 5017.0ft (Original Well Elev)
Project:	SEC.2-T4N-R68W	MD Reference:	WELL @ 5017.0ft (Original Well Elev)
Site:	Pratt 14-2D Pad Sec.2-T4N-R68W	North Reference:	True
Well:	Pratt 13-2D	Survey Calculation Method:	Minimum Curvature
Wellbore:	Wellbore #1		
Design:	Plan #1 (2-08-11)		

Planned Survey

Measured Depth (ft)	Inclination (°)	Azimuth (°)	Vertical Depth (ft)	+N/-S (ft)	+E/-W (ft)	Vertical Section (ft)	Dogleg Rate (°/100ft)	Build Rate (°/100ft)	Turn Rate (°/100ft)
0.0	0.00	0.00	0.0	0.0	0.0	0.0	0.00	0.00	0.00
40.0	0.00	0.00	40.0	0.0	0.0	0.0	0.00	0.00	0.00
80.0	0.00	0.00	80.0	0.0	0.0	0.0	0.00	0.00	0.00
120.0	0.00	0.00	120.0	0.0	0.0	0.0	0.00	0.00	0.00
160.0	0.00	0.00	160.0	0.0	0.0	0.0	0.00	0.00	0.00
200.0	0.00	0.00	200.0	0.0	0.0	0.0	0.00	0.00	0.00
240.0	0.00	0.00	240.0	0.0	0.0	0.0	0.00	0.00	0.00
280.0	0.00	0.00	280.0	0.0	0.0	0.0	0.00	0.00	0.00
320.0	0.00	0.00	320.0	0.0	0.0	0.0	0.00	0.00	0.00
360.0	0.00	0.00	360.0	0.0	0.0	0.0	0.00	0.00	0.00
400.0	0.00	0.00	400.0	0.0	0.0	0.0	0.00	0.00	0.00
440.0	0.00	0.00	440.0	0.0	0.0	0.0	0.00	0.00	0.00
480.0	0.00	0.00	480.0	0.0	0.0	0.0	0.00	0.00	0.00
520.0	0.00	0.00	520.0	0.0	0.0	0.0	0.00	0.00	0.00
550.0	0.00	0.00	550.0	0.0	0.0	0.0	0.00	0.00	0.00
8 5/8"									
560.0	0.00	0.00	560.0	0.0	0.0	0.0	0.00	0.00	0.00
600.0	0.00	0.00	600.0	0.0	0.0	0.0	0.00	0.00	0.00
625.0	0.00	0.00	625.0	0.0	0.0	0.0	0.00	0.00	0.00
640.0	0.30	340.00	640.0	0.0	0.0	0.0	2.00	2.00	0.00
680.0	1.10	340.00	680.0	0.5	-0.2	0.4	2.00	2.00	0.00
720.0	1.90	340.00	720.0	1.5	-0.5	1.3	2.00	2.00	0.00
760.0	2.70	340.00	760.0	3.0	-1.1	2.6	2.00	2.00	0.00
800.0	3.50	340.00	799.9	5.0	-1.8	4.4	2.00	2.00	0.00
840.0	4.30	340.00	839.8	7.6	-2.8	6.6	2.00	2.00	0.00
875.0	5.00	340.00	874.7	10.2	-3.7	8.9	2.00	2.00	0.00
880.0	5.06	339.10	879.7	10.7	-3.9	9.3	2.00	1.24	-17.91
920.0	5.60	332.69	919.5	14.0	-5.4	12.4	2.00	1.34	-16.04
960.0	6.19	327.44	959.3	17.6	-7.5	16.1	2.00	1.48	-13.12
1,000.0	6.82	323.14	999.0	21.3	-10.0	20.4	2.00	1.59	-10.76
1,040.0	7.49	319.58	1,038.7	25.2	-13.2	25.2	2.00	1.67	-8.90
1,080.0	8.18	316.61	1,078.3	29.2	-16.8	30.5	2.00	1.73	-7.43
1,120.0	8.89	314.10	1,117.9	33.5	-21.0	36.3	2.00	1.77	-6.27
1,160.0	9.61	311.97	1,157.4	37.8	-25.7	42.7	2.00	1.81	-5.34
1,200.0	10.35	310.13	1,196.8	42.4	-30.9	49.6	2.00	1.84	-4.59
1,240.0	11.09	308.53	1,236.1	47.1	-36.7	57.0	2.00	1.86	-3.99
1,280.0	11.84	307.14	1,275.3	52.0	-42.9	64.9	2.00	1.88	-3.49
1,320.0	12.60	305.91	1,314.4	57.0	-49.8	73.4	2.00	1.89	-3.08
1,360.0	13.36	304.81	1,353.3	62.2	-57.1	82.3	2.00	1.90	-2.73
1,400.0	14.12	303.84	1,392.2	67.6	-64.9	91.8	2.00	1.91	-2.44
1,417.4	14.46	303.44	1,409.0	69.9	-68.5	96.1	2.00	1.92	-2.26
1,440.0	14.46	303.44	1,430.9	73.1	-73.2	101.8	0.00	0.00	0.00
1,480.0	14.46	303.44	1,469.7	78.6	-81.5	111.8	0.00	0.00	0.00
1,520.0	14.46	303.44	1,508.4	84.1	-89.9	121.7	0.00	0.00	0.00
1,560.0	14.46	303.44	1,547.1	89.6	-98.2	131.7	0.00	0.00	0.00
1,600.0	14.46	303.44	1,585.9	95.1	-106.5	141.7	0.00	0.00	0.00
1,640.0	14.46	303.44	1,624.6	100.6	-114.9	151.7	0.00	0.00	0.00
1,680.0	14.46	303.44	1,663.3	106.1	-123.2	161.7	0.00	0.00	0.00
1,720.0	14.46	303.44	1,702.1	111.6	-131.5	171.7	0.00	0.00	0.00
1,760.0	14.46	303.44	1,740.8	117.1	-139.9	181.6	0.00	0.00	0.00
1,800.0	14.46	303.44	1,779.5	122.6	-148.2	191.6	0.00	0.00	0.00
1,840.0	14.46	303.44	1,818.3	128.1	-156.5	201.6	0.00	0.00	0.00
1,880.0	14.46	303.44	1,857.0	133.6	-164.9	211.6	0.00	0.00	0.00
1,920.0	14.46	303.44	1,895.7	139.1	-173.2	221.6	0.00	0.00	0.00

Database:	Landmark	Local Co-ordinate Reference:	Well Pratt 13-2D
Company:	Synergy Resources	TVD Reference:	WELL @ 5017.0ft (Original Well Elev)
Project:	SEC.2-T4N-R68W	MD Reference:	WELL @ 5017.0ft (Original Well Elev)
Site:	Pratt 14-2D Pad Sec.2-T4N-R68W	North Reference:	True
Well:	Pratt 13-2D	Survey Calculation Method:	Minimum Curvature
Wellbore:	Wellbore #1		
Design:	Plan #1 (2-08-11)		

Planned Survey

Measured Depth (ft)	Inclination (°)	Azimuth (°)	Vertical Depth (ft)	+N/-S (ft)	+E/-W (ft)	Vertical Section (ft)	Dogleg Rate (°/100ft)	Build Rate (°/100ft)	Turn Rate (°/100ft)
1,960.0	14.46	303.44	1,934.5	144.6	-181.5	231.6	0.00	0.00	0.00
2,000.0	14.46	303.44	1,973.2	150.1	-189.9	241.5	0.00	0.00	0.00
2,040.0	14.46	303.44	2,011.9	155.6	-198.2	251.5	0.00	0.00	0.00
2,080.0	14.46	303.44	2,050.7	161.1	-206.5	261.5	0.00	0.00	0.00
2,120.0	14.46	303.44	2,089.4	166.6	-214.9	271.5	0.00	0.00	0.00
2,160.0	14.46	303.44	2,128.2	172.1	-223.2	281.5	0.00	0.00	0.00
2,200.0	14.46	303.44	2,166.9	177.6	-231.5	291.5	0.00	0.00	0.00
2,240.0	14.46	303.44	2,205.6	183.1	-239.8	301.4	0.00	0.00	0.00
2,280.0	14.46	303.44	2,244.4	188.6	-248.2	311.4	0.00	0.00	0.00
2,320.0	14.46	303.44	2,283.1	194.1	-256.5	321.4	0.00	0.00	0.00
2,360.0	14.46	303.44	2,321.8	199.6	-264.8	331.4	0.00	0.00	0.00
2,400.0	14.46	303.44	2,360.6	205.1	-273.2	341.4	0.00	0.00	0.00
2,440.0	14.46	303.44	2,399.3	210.6	-281.5	351.4	0.00	0.00	0.00
2,480.0	14.46	303.44	2,438.0	216.1	-289.8	361.3	0.00	0.00	0.00
2,520.0	14.46	303.44	2,476.8	221.6	-298.2	371.3	0.00	0.00	0.00
2,560.0	14.46	303.44	2,515.5	227.1	-306.5	381.3	0.00	0.00	0.00
2,600.0	14.46	303.44	2,554.2	232.6	-314.8	391.3	0.00	0.00	0.00
2,640.0	14.46	303.44	2,593.0	238.1	-323.2	401.3	0.00	0.00	0.00
2,680.0	14.46	303.44	2,631.7	243.6	-331.5	411.3	0.00	0.00	0.00
2,720.0	14.46	303.44	2,670.4	249.2	-339.8	421.2	0.00	0.00	0.00
2,760.0	14.46	303.44	2,709.2	254.7	-348.2	431.2	0.00	0.00	0.00
2,800.0	14.46	303.44	2,747.9	260.2	-356.5	441.2	0.00	0.00	0.00
2,840.0	14.46	303.44	2,786.6	265.7	-364.8	451.2	0.00	0.00	0.00
2,880.0	14.46	303.44	2,825.4	271.2	-373.2	461.2	0.00	0.00	0.00
2,920.0	14.46	303.44	2,864.1	276.7	-381.5	471.1	0.00	0.00	0.00
2,960.0	14.46	303.44	2,902.8	282.2	-389.8	481.1	0.00	0.00	0.00
3,000.0	14.46	303.44	2,941.6	287.7	-398.2	491.1	0.00	0.00	0.00
3,040.0	14.46	303.44	2,980.3	293.2	-406.5	501.1	0.00	0.00	0.00
3,080.0	14.46	303.44	3,019.0	298.7	-414.8	511.1	0.00	0.00	0.00
3,120.0	14.46	303.44	3,057.8	304.2	-423.2	521.1	0.00	0.00	0.00
3,160.0	14.46	303.44	3,096.5	309.7	-431.5	531.0	0.00	0.00	0.00
3,200.0	14.46	303.44	3,135.2	315.2	-439.8	541.0	0.00	0.00	0.00
3,240.0	14.46	303.44	3,174.0	320.7	-448.2	551.0	0.00	0.00	0.00
3,280.0	14.46	303.44	3,212.7	326.2	-456.5	561.0	0.00	0.00	0.00
3,320.0	14.46	303.44	3,251.4	331.7	-464.8	571.0	0.00	0.00	0.00
3,360.0	14.46	303.44	3,290.2	337.2	-473.1	581.0	0.00	0.00	0.00
3,400.0	14.46	303.44	3,328.9	342.7	-481.5	590.9	0.00	0.00	0.00
3,440.0	14.46	303.44	3,367.6	348.2	-489.8	600.9	0.00	0.00	0.00
3,480.0	14.46	303.44	3,406.4	353.7	-498.1	610.9	0.00	0.00	0.00
3,520.0	14.46	303.44	3,445.1	359.2	-506.5	620.9	0.00	0.00	0.00
3,560.0	14.46	303.44	3,483.8	364.7	-514.8	630.9	0.00	0.00	0.00
3,600.0	14.46	303.44	3,522.6	370.2	-523.1	640.9	0.00	0.00	0.00
3,640.0	14.46	303.44	3,561.3	375.7	-531.5	650.8	0.00	0.00	0.00
3,680.0	14.46	303.44	3,600.0	381.2	-539.8	660.8	0.00	0.00	0.00
3,720.0	14.46	303.44	3,638.8	386.7	-548.1	670.8	0.00	0.00	0.00
3,760.0	14.46	303.44	3,677.5	392.2	-556.5	680.8	0.00	0.00	0.00
3,800.0	14.46	303.44	3,716.2	397.7	-564.8	690.8	0.00	0.00	0.00
3,840.0	14.46	303.44	3,755.0	403.2	-573.1	700.8	0.00	0.00	0.00
3,880.0	14.46	303.44	3,793.7	408.7	-581.5	710.7	0.00	0.00	0.00
3,920.0	14.46	303.44	3,832.4	414.2	-589.8	720.7	0.00	0.00	0.00
3,960.0	14.46	303.44	3,871.2	419.7	-598.1	730.7	0.00	0.00	0.00
4,000.0	14.46	303.44	3,909.9	425.3	-606.5	740.7	0.00	0.00	0.00
4,040.0	14.46	303.44	3,948.6	430.8	-614.8	750.7	0.00	0.00	0.00
4,080.0	14.46	303.44	3,987.4	436.3	-623.1	760.7	0.00	0.00	0.00

Database:	Landmark	Local Co-ordinate Reference:	Well Pratt 13-2D
Company:	Synergy Resources	TVD Reference:	WELL @ 5017.0ft (Original Well Elev)
Project:	SEC.2-T4N-R68W	MD Reference:	WELL @ 5017.0ft (Original Well Elev)
Site:	Pratt 14-2D Pad Sec.2-T4N-R68W	North Reference:	True
Well:	Pratt 13-2D	Survey Calculation Method:	Minimum Curvature
Wellbore:	Wellbore #1		
Design:	Plan #1 (2-08-11)		

Planned Survey

Measured Depth (ft)	Inclination (°)	Azimuth (°)	Vertical Depth (ft)	+N/-S (ft)	+E/-W (ft)	Vertical Section (ft)	Dogleg Rate (°/100ft)	Build Rate (°/100ft)	Turn Rate (°/100ft)
4,120.0	14.46	303.44	4,026.1	441.8	-631.5	770.6	0.00	0.00	0.00
4,160.0	14.46	303.44	4,064.8	447.3	-639.8	780.6	0.00	0.00	0.00
4,200.0	14.46	303.44	4,103.6	452.8	-648.1	790.6	0.00	0.00	0.00
4,240.0	14.46	303.44	4,142.3	458.3	-656.5	800.6	0.00	0.00	0.00
4,280.0	14.46	303.44	4,181.0	463.8	-664.8	810.6	0.00	0.00	0.00
4,320.0	14.46	303.44	4,219.8	469.3	-673.1	820.5	0.00	0.00	0.00
4,360.0	14.46	303.44	4,258.5	474.8	-681.5	830.5	0.00	0.00	0.00
4,387.2	14.46	303.44	4,284.8	478.5	-687.1	837.3	0.00	0.00	0.00
4,400.0	14.20	303.44	4,297.2	480.3	-689.8	840.5	2.00	-2.00	0.00
4,440.0	13.40	303.44	4,336.1	485.5	-697.7	850.0	2.00	-2.00	0.00
4,480.0	12.60	303.44	4,375.1	490.5	-705.2	859.0	2.00	-2.00	0.00
4,520.0	11.80	303.44	4,414.2	495.1	-712.3	867.5	2.00	-2.00	0.00
4,560.0	11.00	303.44	4,453.4	499.5	-718.9	875.4	2.00	-2.00	0.00
4,600.0	10.20	303.44	4,492.7	503.6	-725.0	882.7	2.00	-2.00	0.00
4,640.0	9.40	303.44	4,532.1	507.3	-730.7	889.5	2.00	-2.00	0.00
4,680.0	8.60	303.44	4,571.6	510.8	-735.9	895.8	2.00	-2.00	0.00
4,720.0	7.80	303.44	4,611.2	513.9	-740.7	901.5	2.00	-2.00	0.00
4,760.0	7.00	303.44	4,650.9	516.7	-745.0	906.7	2.00	-2.00	0.00
4,800.0	6.20	303.44	4,690.6	519.3	-748.8	911.2	2.00	-2.00	0.00
4,840.0	5.40	303.44	4,730.4	521.5	-752.2	915.3	2.00	-2.00	0.00
4,880.0	4.60	303.44	4,770.2	523.4	-755.1	918.8	2.00	-2.00	0.00
4,920.0	3.80	303.44	4,810.1	525.0	-757.5	921.7	2.00	-2.00	0.00
4,960.0	3.00	303.44	4,850.1	526.3	-759.5	924.1	2.00	-2.00	0.00
5,000.0	2.20	303.44	4,890.0	527.3	-761.0	925.9	2.00	-2.00	0.00
5,040.0	1.40	303.44	4,930.0	528.0	-762.1	927.1	2.00	-2.00	0.00
5,080.0	0.60	303.44	4,970.0	528.4	-762.7	927.8	2.00	-2.00	0.00
5,110.0	0.00	0.00	5,000.0	528.5	-762.8	928.0	2.00	-2.00	0.00
DRILL TARGET 2108'FSL & 514'FWL - PERMIT TARGET BHL 2165'FSL, 460'FWL									
5,120.0	0.00	0.00	5,010.0	528.5	-762.8	928.0	0.00	0.00	0.00
5,160.0	0.00	0.00	5,050.0	528.5	-762.8	928.0	0.00	0.00	0.00
5,200.0	0.00	0.00	5,090.0	528.5	-762.8	928.0	0.00	0.00	0.00
5,240.0	0.00	0.00	5,130.0	528.5	-762.8	928.0	0.00	0.00	0.00
5,280.0	0.00	0.00	5,170.0	528.5	-762.8	928.0	0.00	0.00	0.00
5,320.0	0.00	0.00	5,210.0	528.5	-762.8	928.0	0.00	0.00	0.00
5,360.0	0.00	0.00	5,250.0	528.5	-762.8	928.0	0.00	0.00	0.00
5,400.0	0.00	0.00	5,290.0	528.5	-762.8	928.0	0.00	0.00	0.00
5,440.0	0.00	0.00	5,330.0	528.5	-762.8	928.0	0.00	0.00	0.00
5,480.0	0.00	0.00	5,370.0	528.5	-762.8	928.0	0.00	0.00	0.00
5,520.0	0.00	0.00	5,410.0	528.5	-762.8	928.0	0.00	0.00	0.00
5,560.0	0.00	0.00	5,450.0	528.5	-762.8	928.0	0.00	0.00	0.00
5,600.0	0.00	0.00	5,490.0	528.5	-762.8	928.0	0.00	0.00	0.00
5,640.0	0.00	0.00	5,530.0	528.5	-762.8	928.0	0.00	0.00	0.00
5,680.0	0.00	0.00	5,570.0	528.5	-762.8	928.0	0.00	0.00	0.00
5,720.0	0.00	0.00	5,610.0	528.5	-762.8	928.0	0.00	0.00	0.00
5,760.0	0.00	0.00	5,650.0	528.5	-762.8	928.0	0.00	0.00	0.00
5,800.0	0.00	0.00	5,690.0	528.5	-762.8	928.0	0.00	0.00	0.00
5,840.0	0.00	0.00	5,730.0	528.5	-762.8	928.0	0.00	0.00	0.00
5,880.0	0.00	0.00	5,770.0	528.5	-762.8	928.0	0.00	0.00	0.00
5,920.0	0.00	0.00	5,810.0	528.5	-762.8	928.0	0.00	0.00	0.00
5,960.0	0.00	0.00	5,850.0	528.5	-762.8	928.0	0.00	0.00	0.00
6,000.0	0.00	0.00	5,890.0	528.5	-762.8	928.0	0.00	0.00	0.00
6,040.0	0.00	0.00	5,930.0	528.5	-762.8	928.0	0.00	0.00	0.00
6,080.0	0.00	0.00	5,970.0	528.5	-762.8	928.0	0.00	0.00	0.00
6,120.0	0.00	0.00	6,010.0	528.5	-762.8	928.0	0.00	0.00	0.00

Database:	Landmark	Local Co-ordinate Reference:	Well Pratt 13-2D
Company:	Synergy Resources	TVD Reference:	WELL @ 5017.0ft (Original Well Elev)
Project:	SEC.2-T4N-R68W	MD Reference:	WELL @ 5017.0ft (Original Well Elev)
Site:	Pratt 14-2D Pad Sec.2-T4N-R68W	North Reference:	True
Well:	Pratt 13-2D	Survey Calculation Method:	Minimum Curvature
Wellbore:	Wellbore #1		
Design:	Plan #1 (2-08-11)		

Planned Survey

Measured Depth (ft)	Inclination (°)	Azimuth (°)	Vertical Depth (ft)	+N/-S (ft)	+E/-W (ft)	Vertical Section (ft)	Dogleg Rate (°/100ft)	Build Rate (°/100ft)	Turn Rate (°/100ft)
6,160.0	0.00	0.00	6,050.0	528.5	-762.8	928.0	0.00	0.00	0.00
6,200.0	0.00	0.00	6,090.0	528.5	-762.8	928.0	0.00	0.00	0.00
6,240.0	0.00	0.00	6,130.0	528.5	-762.8	928.0	0.00	0.00	0.00
6,280.0	0.00	0.00	6,170.0	528.5	-762.8	928.0	0.00	0.00	0.00
6,320.0	0.00	0.00	6,210.0	528.5	-762.8	928.0	0.00	0.00	0.00
6,360.0	0.00	0.00	6,250.0	528.5	-762.8	928.0	0.00	0.00	0.00
6,400.0	0.00	0.00	6,290.0	528.5	-762.8	928.0	0.00	0.00	0.00
6,440.0	0.00	0.00	6,330.0	528.5	-762.8	928.0	0.00	0.00	0.00
6,480.0	0.00	0.00	6,370.0	528.5	-762.8	928.0	0.00	0.00	0.00
6,520.0	0.00	0.00	6,410.0	528.5	-762.8	928.0	0.00	0.00	0.00
6,560.0	0.00	0.00	6,450.0	528.5	-762.8	928.0	0.00	0.00	0.00
6,600.0	0.00	0.00	6,490.0	528.5	-762.8	928.0	0.00	0.00	0.00
6,640.0	0.00	0.00	6,530.0	528.5	-762.8	928.0	0.00	0.00	0.00
6,680.0	0.00	0.00	6,570.0	528.5	-762.8	928.0	0.00	0.00	0.00
6,720.0	0.00	0.00	6,610.0	528.5	-762.8	928.0	0.00	0.00	0.00
6,760.0	0.00	0.00	6,650.0	528.5	-762.8	928.0	0.00	0.00	0.00
6,800.0	0.00	0.00	6,690.0	528.5	-762.8	928.0	0.00	0.00	0.00
6,810.0	0.00	0.00	6,700.0	528.5	-762.8	928.0	0.00	0.00	0.00
LEGAL BOX 1983'FSL & 639'FWL									
6,840.0	0.00	0.00	6,730.0	528.5	-762.8	928.0	0.00	0.00	0.00
6,880.0	0.00	0.00	6,770.0	528.5	-762.8	928.0	0.00	0.00	0.00
6,920.0	0.00	0.00	6,810.0	528.5	-762.8	928.0	0.00	0.00	0.00
6,960.0	0.00	0.00	6,850.0	528.5	-762.8	928.0	0.00	0.00	0.00
7,000.0	0.00	0.00	6,890.0	528.5	-762.8	928.0	0.00	0.00	0.00
7,040.0	0.00	0.00	6,930.0	528.5	-762.8	928.0	0.00	0.00	0.00
7,080.0	0.00	0.00	6,970.0	528.5	-762.8	928.0	0.00	0.00	0.00
7,120.0	0.00	0.00	7,010.0	528.5	-762.8	928.0	0.00	0.00	0.00
7,160.0	0.00	0.00	7,050.0	528.5	-762.8	928.0	0.00	0.00	0.00
7,200.0	0.00	0.00	7,090.0	528.5	-762.8	928.0	0.00	0.00	0.00
7,240.0	0.00	0.00	7,130.0	528.5	-762.8	928.0	0.00	0.00	0.00
7,280.0	0.00	0.00	7,170.0	528.5	-762.8	928.0	0.00	0.00	0.00
7,320.0	0.00	0.00	7,210.0	528.5	-762.8	928.0	0.00	0.00	0.00
7,360.0	0.00	0.00	7,250.0	528.5	-762.8	928.0	0.00	0.00	0.00
7,400.0	0.00	0.00	7,290.0	528.5	-762.8	928.0	0.00	0.00	0.00
7,440.0	0.00	0.00	7,330.0	528.5	-762.8	928.0	0.00	0.00	0.00
7,480.0	0.00	0.00	7,370.0	528.5	-762.8	928.0	0.00	0.00	0.00
7,520.0	0.00	0.00	7,410.0	528.5	-762.8	928.0	0.00	0.00	0.00
7,560.0	0.00	0.00	7,450.0	528.5	-762.8	928.0	0.00	0.00	0.00
7,600.0	0.00	0.00	7,490.0	528.5	-762.8	928.0	0.00	0.00	0.00
7,640.0	0.00	0.00	7,530.0	528.5	-762.8	928.0	0.00	0.00	0.00
7,680.0	0.00	0.00	7,570.0	528.5	-762.8	928.0	0.00	0.00	0.00
7,720.0	0.00	0.00	7,610.0	528.5	-762.8	928.0	0.00	0.00	0.00
7,760.0	0.00	0.00	7,650.0	528.5	-762.8	928.0	0.00	0.00	0.00
7,800.0	0.00	0.00	7,690.0	528.5	-762.8	928.0	0.00	0.00	0.00
7,840.0	0.00	0.00	7,730.0	528.5	-762.8	928.0	0.00	0.00	0.00
7,880.0	0.00	0.00	7,770.0	528.5	-762.8	928.0	0.00	0.00	0.00
7,920.0	0.00	0.00	7,810.0	528.5	-762.8	928.0	0.00	0.00	0.00
7,960.0	0.00	0.00	7,850.0	528.5	-762.8	928.0	0.00	0.00	0.00
8,000.0	0.00	0.00	7,890.0	528.5	-762.8	928.0	0.00	0.00	0.00
8,040.0	0.00	0.00	7,930.0	528.5	-762.8	928.0	0.00	0.00	0.00
8,080.0	0.00	0.00	7,970.0	528.5	-762.8	928.0	0.00	0.00	0.00
8,120.0	0.00	0.00	8,010.0	528.5	-762.8	928.0	0.00	0.00	0.00
8,140.0	0.00	0.00	8,030.0	528.5	-762.8	928.0	0.00	0.00	0.00

Database: Landmark
Company: Synergy Resources
Project: SEC.2-T4N-R68W
Site: Pratt 14-2D Pad Sec.2-T4N-R68W
Well: Pratt 13-2D
Wellbore: Wellbore #1
Design: Plan #1 (2-08-11)

Local Co-ordinate Reference: Well Pratt 13-2D
TVD Reference: WELL @ 5017.0ft (Original Well Elev)
MD Reference: WELL @ 5017.0ft (Original Well Elev)
North Reference: True
Survey Calculation Method: Minimum Curvature

Targets

Target Name

- hit/miss target	Dip Angle	Dip Dir.	TVD	+N/-S	+E/-W	Northing	Easting	Latitude	Longitude
- Shape	(°)	(°)	(ft)	(ft)	(ft)	(ft)	(ft)		
LEGAL BOX 1983'FS	0.00	0.00	6,700.0	403.5	-637.8	1,367,480.24	3,145,641.44	40.340957	-104.977522
- plan misses target center by 176.8ft at 6810.0ft MD (6700.0 TVD, 528.5 N, -762.8 E)									
- Rectangle (sides W400.0 H400.0 D1,330.0)									
DRILL TARGET 2108	0.00	0.00	5,000.0	528.5	-762.8	1,367,604.49	3,145,515.71	40.341300	-104.977970
- plan hits target center									
- Point									
PERMIT TARGET BH	0.00	0.00	5,000.0	585.5	-816.8	1,367,661.14	3,145,461.40	40.341456	-104.978164
- plan misses target center by 78.5ft at 5110.0ft MD (5000.0 TVD, 528.5 N, -762.8 E)									
- Point									

Casing Points

Measured Depth (ft)	Vertical Depth (ft)	Name	Casing Diameter (")	Hole Diameter (")
550.0	550.0	8 5/8"	8-5/8	12-1/4



Directional

Synergy Resources

SEC.2-T4N-R68W

Pratt 14-2D Pad Sec.2-T4N-R68W

Pratt 13-2D

Wellbore #1

Plan #1 (2-08-11)

Anticollision Report

15 February, 2011

Company:	Synergy Resources	Local Co-ordinate Reference:	Well Pratt 13-2D
Project:	SEC.2-T4N-R68W	TVD Reference:	WELL @ 5017.0ft (Original Well Elev)
Reference Site:	Pratt 14-2D Pad Sec.2-T4N-R68W	MD Reference:	WELL @ 5017.0ft (Original Well Elev)
Site Error:	0.0ft	North Reference:	True
Reference Well:	Pratt 13-2D	Survey Calculation Method:	Minimum Curvature
Well Error:	0.0ft	Output errors are at	2.00 sigma
Reference Wellbore	Wellbore #1	Database:	Landmark
Reference Design:	Plan #1 (2-08-11)	Offset TVD Reference:	Offset Datum

Reference	Plan #1 (2-08-11)		
Filter type:	NO GLOBAL FILTER: Using user defined selection & filtering criteria		
Interpolation Method:	Stations	Error Model:	ISCWSA
Depth Range:	Unlimited	Scan Method:	Closest Approach 3D
Results Limited by:	Maximum center-center distance of 10,000.0ft	Error Surface:	Elliptical Conic
Warning Levels Evaluated at:	2.00 Sigma		

Survey Tool Program	Date 2/15/2011			
From (ft)	To (ft)	Survey (Wellbore)	Tool Name	Description
0.0	8,140.0	Plan #1 (2-08-11) (Wellbore #1)	MWD	MWD - Standard

Summary						
Site Name	Reference Measured Depth (ft)	Offset Measured Depth (ft)	Distance Between Centres (ft)	Between Ellipses (ft)	Separation Factor	Warning
Offset Well - Wellbore - Design						
Pratt 14-2D Pad Sec.2-T4N-R68W						
Pratt 14-2D - Wellbore #1 - Plan #1 (2-10-11)	822.0	822.8	18.6	15.1	5.357	CC, ES
Pratt 14-2D - Wellbore #1 - Plan #1 (2-10-11)	875.0	875.5	19.2	15.4	5.168	SF
Pratt 2B (Vert.) - Wellbore #1 - Plan #1 (2-08-11)	625.0	625.0	20.1	17.5	7.765	CC, ES
Pratt 2B (Vert.) - Wellbore #1 - Plan #1 (2-08-11)	800.0	799.9	22.5	19.1	6.662	SF

Offset Design Pratt 14-2D Pad Sec.2-T4N-R68W - Pratt 14-2D - Wellbore #1 - Plan #1 (2-10-11)												
Survey Program: 0-MWD												
Reference	Offset	Semi Major Axis		Distance		Minimum Separation		Warning				
Measured Depth (ft)	Vertical Depth (ft)	Measured Depth (ft)	Vertical Depth (ft)	Reference (ft)	Offset (ft)	Highside Toolface (°)	Offset Wellbore Centre +N/-S (ft)	+E/-W (ft)	Between Centres (ft)	Between Ellipses (ft)	Minimum Separation (ft)	Separation Factor
0.0	0.0	1.0	1.0	0.0	0.0	-90.00	0.0	-19.8	19.8	19.8	0.00	N/A
100.0	100.0	101.0	101.0	0.1	0.1	-90.00	0.0	-19.8	19.8	19.6	0.23	87.187
200.0	200.0	201.0	201.0	0.3	0.3	-90.00	0.0	-19.8	19.8	19.1	0.68	29.255
300.0	300.0	301.0	301.0	0.6	0.6	-90.00	0.0	-19.8	19.8	18.7	1.13	17.577
400.0	400.0	401.0	401.0	0.8	0.8	-90.00	0.0	-19.8	19.8	18.2	1.58	12.562
500.0	500.0	501.0	501.0	1.0	1.0	-90.00	0.0	-19.8	19.8	17.8	2.03	9.773
600.0	600.0	601.0	601.0	1.2	1.2	-90.00	0.0	-19.8	19.8	17.3	2.47	7.998
625.0	625.0	626.0	626.0	1.3	1.3	-90.00	0.0	-19.8	19.8	17.2	2.59	7.651
700.0	700.0	701.0	701.0	1.5	1.5	-72.72	0.0	-19.8	19.5	16.6	2.92	6.664
800.0	799.9	800.9	800.9	1.7	1.7	-85.62	0.0	-19.8	18.7	15.3	3.37	5.533
822.0	821.8	822.8	822.8	1.7	1.7	-90.00	0.0	-19.8	18.6	15.1	3.47	5.357 CC, ES
875.0	874.7	875.5	875.5	1.9	1.8	-102.58	-0.1	-19.9	19.2	15.4	3.71	5.168 SF
900.0	899.6	900.0	900.0	1.9	1.9	-104.92	-0.4	-20.0	20.0	16.2	3.81	5.245
1,000.0	999.0	998.7	998.6	2.2	2.1	-116.92	-3.2	-21.9	27.3	23.1	4.23	6.456
1,100.0	1,098.1	1,096.2	1,095.9	2.4	2.3	-125.00	-8.9	-25.5	40.9	36.2	4.66	8.783
1,200.0	1,196.8	1,192.6	1,191.8	2.7	2.5	-128.89	-17.2	-30.9	59.9	54.8	5.11	11.722
1,300.0	1,294.8	1,287.6	1,285.9	3.1	2.7	-130.56	-28.0	-37.9	83.5	77.9	5.60	14.929
1,400.0	1,392.2	1,381.0	1,377.9	3.5	3.0	-131.16	-41.2	-46.4	111.4	105.3	6.13	18.188
1,417.4	1,409.0	1,397.0	1,393.7	3.5	3.0	-131.20	-43.8	-48.0	116.7	110.5	6.22	18.752
1,500.0	1,489.0	1,472.8	1,467.9	3.9	3.3	-132.87	-56.7	-56.3	142.8	136.1	6.71	21.288
1,600.0	1,585.9	1,563.4	1,556.0	4.4	3.6	-133.58	-74.3	-67.7	176.5	169.1	7.34	24.054
1,700.0	1,682.7	1,653.1	1,642.7	4.8	4.0	-133.49	-94.0	-80.4	212.2	204.2	8.01	26.501
1,800.0	1,779.5	1,746.2	1,732.2	5.3	4.4	-133.23	-115.3	-94.1	248.7	240.0	8.71	28.545

CC - Min centre to center distance or convergent point, SF - min separation factor, ES - min ellipse separation

Company:	Synergy Resources	Local Co-ordinate Reference:	Well Pratt 13-2D
Project:	SEC.2-T4N-R68W	TVD Reference:	WELL @ 5017.0ft (Original Well Elev)
Reference Site:	Pratt 14-2D Pad Sec.2-T4N-R68W	MD Reference:	WELL @ 5017.0ft (Original Well Elev)
Site Error:	0.0ft	North Reference:	True
Reference Well:	Pratt 13-2D	Survey Calculation Method:	Minimum Curvature
Well Error:	0.0ft	Output errors are at	2.00 sigma
Reference Wellbore	Wellbore #1	Database:	Landmark
Reference Design:	Plan #1 (2-08-11)	Offset TVD Reference:	Offset Datum

Offset Design Pratt 14-2D Pad Sec.2-T4N-R68W - Pratt 14-2D - Wellbore #1 - Plan #1 (2-10-11)													Offset Site Error:	0.0 ft
Survey Program: 0-MWD													Offset Well Error:	0.0 ft
Measured Depth (ft)	Vertical Depth (ft)	Measured Depth (ft)	Vertical Depth (ft)	Reference (ft)	Offset (ft)	Semi Major Axis Highside Toolface (°)	Offset Wellbore Centre +N/-S (ft)	+E/-W (ft)	Between Centres (ft)	Between Ellipses (ft)	Minimum Separation (ft)	Separation Factor	Warning	
1,900.0	1,876.4	1,839.3	1,821.8	5.8	4.9	-133.04	-136.6	-107.9	285.2	275.8	9.44	30.220		
2,000.0	1,973.2	1,932.4	1,911.4	6.3	5.4	-132.90	-157.9	-121.6	321.7	311.5	10.18	31.611		
2,100.0	2,070.1	2,025.5	2,001.0	6.8	5.8	-132.78	-179.2	-135.3	358.2	347.3	10.93	32.772		
2,200.0	2,166.9	2,118.6	2,090.5	7.3	6.3	-132.68	-200.6	-149.1	394.7	383.0	11.69	33.753		
2,300.0	2,263.7	2,211.7	2,180.1	7.9	6.8	-132.60	-221.9	-162.8	431.2	418.8	12.47	34.588		
2,400.0	2,360.6	2,304.8	2,269.7	8.4	7.3	-132.54	-243.2	-176.6	467.7	454.5	13.25	35.307		
2,500.0	2,457.4	2,397.9	2,359.3	8.9	7.8	-132.48	-264.5	-190.3	504.2	490.2	14.03	35.930		
2,600.0	2,554.2	2,491.0	2,448.8	9.4	8.3	-132.43	-285.8	-204.0	540.8	525.9	14.83	36.474		
2,700.0	2,651.1	2,584.1	2,538.4	9.9	8.8	-132.39	-307.2	-217.8	577.3	561.6	15.62	36.952		
2,800.0	2,747.9	2,677.2	2,628.0	10.4	9.4	-132.35	-328.5	-231.5	613.8	597.4	16.42	37.376		
2,900.0	2,844.7	2,770.3	2,717.6	11.0	9.9	-132.32	-349.8	-245.3	650.3	633.1	17.22	37.753		
3,000.0	2,941.6	2,863.4	2,807.1	11.5	10.4	-132.29	-371.1	-259.0	686.8	668.8	18.03	38.091		
3,100.0	3,038.4	2,956.5	2,896.7	12.0	10.9	-132.26	-392.4	-272.7	723.3	704.5	18.84	38.395		
3,200.0	3,135.2	3,049.6	2,986.3	12.5	11.4	-132.23	-413.7	-286.5	759.8	740.2	19.65	38.670		
3,300.0	3,232.1	3,142.7	3,075.8	13.1	12.0	-132.21	-435.1	-300.2	796.3	775.9	20.46	38.920		
3,400.0	3,328.9	3,235.8	3,165.4	13.6	12.5	-132.19	-456.4	-314.0	832.8	811.6	21.27	39.147		
3,500.0	3,425.7	3,328.9	3,255.0	14.1	13.0	-132.17	-477.7	-327.7	869.4	847.3	22.09	39.355		
3,600.0	3,522.6	3,421.9	3,344.6	14.7	13.5	-132.16	-499.0	-341.5	905.9	883.0	22.91	39.546		
3,700.0	3,619.4	3,515.0	3,434.1	15.2	14.1	-132.14	-520.3	-355.2	942.4	918.7	23.72	39.721		
3,800.0	3,716.2	3,608.1	3,523.7	15.7	14.6	-132.13	-541.6	-368.9	978.9	954.4	24.54	39.884		
3,900.0	3,813.1	3,701.2	3,613.3	16.2	15.1	-132.11	-563.0	-382.7	1,015.4	990.0	25.36	40.034		
4,000.0	3,909.9	3,794.3	3,702.9	16.8	15.6	-132.10	-584.3	-396.4	1,051.9	1,025.7	26.18	40.173		
4,100.0	4,006.7	3,887.4	3,792.4	17.3	16.2	-132.09	-605.6	-410.2	1,088.4	1,061.4	27.01	40.302		
4,200.0	4,103.6	3,980.5	3,882.0	17.8	16.7	-132.08	-626.9	-423.9	1,124.9	1,097.1	27.83	40.423		
4,300.0	4,200.4	4,073.6	3,971.6	18.4	17.2	-132.07	-648.2	-437.6	1,161.5	1,132.8	28.65	40.536		
4,387.2	4,284.8	4,154.8	4,049.7	18.8	17.7	-132.06	-666.8	-449.6	1,193.3	1,163.9	29.37	40.628		
4,400.0	4,297.2	4,166.7	4,061.2	18.9	17.7	-132.13	-669.5	-451.4	1,198.0	1,168.5	29.48	40.632		
4,500.0	4,394.6	4,260.3	4,151.2	19.3	18.3	-132.59	-691.0	-465.2	1,233.1	1,202.8	30.29	40.712		
4,600.0	4,492.7	4,354.6	4,242.0	19.6	18.8	-132.90	-712.6	-479.1	1,266.0	1,235.0	31.06	40.762		
4,700.0	4,591.4	4,449.6	4,333.3	19.9	19.3	-133.05	-734.3	-493.1	1,296.7	1,264.9	31.79	40.788		
4,800.0	4,690.6	4,545.0	4,425.1	20.2	19.9	-133.07	-756.2	-507.2	1,325.2	1,292.7	32.48	40.798		
4,900.0	4,790.2	4,640.8	4,517.3	20.4	20.4	-132.96	-778.1	-521.4	1,351.4	1,318.3	33.13	40.795		
5,000.0	4,890.0	4,736.8	4,609.7	20.5	21.0	-132.73	-800.1	-535.5	1,375.5	1,341.8	33.73	40.786		
5,100.0	4,990.0	4,833.0	4,702.3	20.7	21.5	-132.38	-822.1	-549.7	1,397.5	1,363.2	34.27	40.776		
5,110.0	5,000.0	4,842.6	4,711.5	20.7	21.6	171.11	-824.3	-551.1	1,399.5	1,365.2	34.32	40.775		
5,200.0	5,090.0	4,977.0	4,841.5	20.8	22.2	172.04	-852.8	-569.5	1,416.9	1,382.1	34.86	40.646		
5,300.0	5,190.0	5,135.6	4,996.8	20.9	22.7	172.88	-879.9	-587.0	1,432.5	1,397.1	35.40	40.462		
5,400.0	5,290.0	5,297.3	5,156.7	21.0	23.1	173.49	-900.0	-599.9	1,444.0	1,408.1	35.90	40.224		
5,500.0	5,390.0	5,461.3	5,320.0	21.1	23.4	173.87	-912.5	-608.0	1,451.1	1,414.8	36.33	39.942		
5,600.0	5,490.0	5,526.5	5,485.1	21.2	23.6	174.01	-917.3	-611.1	1,453.7	1,417.0	36.71	39.601		
5,700.0	5,590.0	5,732.4	5,591.0	21.4	23.8	174.01	-917.3	-611.1	1,453.8	1,416.8	36.99	39.303		
5,800.0	5,690.0	5,832.4	5,691.0	21.5	23.9	174.01	-917.3	-611.1	1,453.8	1,416.5	37.26	39.018		
5,900.0	5,790.0	5,932.4	5,791.0	21.6	23.9	174.01	-917.3	-611.1	1,453.8	1,416.2	37.53	38.733		
6,000.0	5,890.0	6,032.4	5,891.0	21.7	24.0	174.01	-917.3	-611.1	1,453.8	1,415.9	37.81	38.449		
6,100.0	5,990.0	6,132.4	5,991.0	21.9	24.1	174.01	-917.3	-611.1	1,453.8	1,415.7	38.09	38.166		
6,200.0	6,090.0	6,232.4	6,091.0	22.0	24.2	174.01	-917.3	-611.1	1,453.8	1,415.4	38.37	37.884		
6,300.0	6,190.0	6,332.4	6,191.0	22.1	24.4	174.01	-917.3	-611.1	1,453.8	1,415.1	38.66	37.603		
6,400.0	6,290.0	6,432.4	6,291.0	22.3	24.5	174.01	-917.3	-611.1	1,453.8	1,414.8	38.95	37.323		
6,500.0	6,390.0	6,532.4	6,391.0	22.4	24.6	174.01	-917.3	-611.1	1,453.8	1,414.5	39.24	37.044		
6,600.0	6,490.0	6,632.4	6,491.0	22.6	24.7	174.01	-917.3	-611.1	1,453.8	1,414.2	39.54	36.767		
6,700.0	6,590.0	6,732.4	6,591.0	22.7	24.8	174.01	-917.3	-611.1	1,453.8	1,413.9	39.84	36.491		
6,800.0	6,690.0	6,832.4	6,691.0	22.8	24.9	174.01	-917.3	-611.1	1,453.8	1,413.6	40.14	36.217		

CC - Min centre to center distance or convergent point, SF - min separation factor, ES - min ellipse separation

Company:	Synergy Resources	Local Co-ordinate Reference:	Well Pratt 13-2D
Project:	SEC.2-T4N-R68W	TVD Reference:	WELL @ 5017.0ft (Original Well Elev)
Reference Site:	Pratt 14-2D Pad Sec.2-T4N-R68W	MD Reference:	WELL @ 5017.0ft (Original Well Elev)
Site Error:	0.0ft	North Reference:	True
Reference Well:	Pratt 13-2D	Survey Calculation Method:	Minimum Curvature
Well Error:	0.0ft	Output errors are at	2.00 sigma
Reference Wellbore	Wellbore #1	Database:	Landmark
Reference Design:	Plan #1 (2-08-11)	Offset TVD Reference:	Offset Datum

Offset Design Pratt 14-2D Pad Sec.2-T4N-R68W - Pratt 14-2D - Wellbore #1 - Plan #1 (2-10-11)													Offset Site Error:	0.0 ft
Survey Program: 0-MWD													Offset Well Error:	0.0 ft
Measured Depth (ft)	Vertical Depth (ft)	Measured Depth (ft)	Vertical Depth (ft)	Reference	Offset	Highside Toolface (°)	Offset Wellbore Centre +N/-S (ft)	+E/-W (ft)	Between Centres (ft)	Between Ellipses (ft)	Minimum Separation (ft)	Separation Factor	Warning	
6,900.0	6,790.0	6,932.4	6,791.0	23.0	25.0	174.01	-917.3	-611.1	1,453.8	1,413.3	40.44	35.944		
7,000.0	6,890.0	7,032.4	6,891.0	23.1	25.1	174.01	-917.3	-611.1	1,453.8	1,413.0	40.75	35.674		
7,100.0	6,990.0	7,132.4	6,991.0	23.3	25.2	174.01	-917.3	-611.1	1,453.8	1,412.7	41.06	35.405		
7,200.0	7,090.0	7,232.4	7,091.0	23.4	25.4	174.01	-917.3	-611.1	1,453.8	1,412.4	41.37	35.137		
7,300.0	7,190.0	7,332.4	7,191.0	23.6	25.5	174.01	-917.3	-611.1	1,453.8	1,412.1	41.69	34.872		
7,400.0	7,290.0	7,432.4	7,291.0	23.7	25.6	174.01	-917.3	-611.1	1,453.8	1,411.7	42.01	34.609		
7,500.0	7,390.0	7,532.4	7,391.0	23.9	25.7	174.01	-917.3	-611.1	1,453.8	1,411.4	42.32	34.348		
7,600.0	7,490.0	7,632.4	7,491.0	24.0	25.8	174.01	-917.3	-611.1	1,453.8	1,411.1	42.65	34.088		
7,700.0	7,590.0	7,732.4	7,591.0	24.2	26.0	174.01	-917.3	-611.1	1,453.8	1,410.8	42.97	33.831		
7,800.0	7,690.0	7,832.4	7,691.0	24.3	26.1	174.01	-917.3	-611.1	1,453.8	1,410.5	43.30	33.576		
7,900.0	7,790.0	7,932.4	7,791.0	24.5	26.2	174.01	-917.3	-611.1	1,453.8	1,410.1	43.63	33.323		
8,000.0	7,890.0	8,032.4	7,891.0	24.6	26.3	174.01	-917.3	-611.1	1,453.8	1,409.8	43.96	33.072		
8,100.0	7,990.0	8,132.4	7,991.0	24.8	26.5	174.01	-917.3	-611.1	1,453.8	1,409.5	44.29	32.824		
8,126.3	8,016.3	8,158.7	8,017.3	24.8	26.5	174.01	-917.3	-611.1	1,453.8	1,409.4	44.38	32.759		
8,140.0	8,030.0	8,171.4	8,030.0	24.8	26.5	174.01	-917.3	-611.1	1,453.8	1,409.3	44.42	32.726		

Company: Synergy Resources
Project: SEC.2-T4N-R68W
Reference Site: Pratt 14-2D Pad Sec.2-T4N-R68W
Site Error: 0.0ft
Reference Well: Pratt 13-2D
Well Error: 0.0ft
Reference Wellbore: Wellbore #1
Reference Design: Plan #1 (2-08-11)

Local Co-ordinate Reference: Well Pratt 13-2D
TVD Reference: WELL @ 5017.0ft (Original Well Elev)
MD Reference: WELL @ 5017.0ft (Original Well Elev)
North Reference: True
Survey Calculation Method: Minimum Curvature
Output errors are at 2.00 sigma
Database: Landmark
Offset TVD Reference: Offset Datum

Offset Design Pratt 14-2D Pad Sec.2-T4N-R68W - Pratt 2B (Vert.) - Wellbore #1 - Plan #1 (2-08-11)												Offset Site Error:	0.0 ft
Survey Program: 0-MWD												Offset Well Error:	0.0 ft
Measured Depth (ft)	Vertical Depth (ft)	Measured Depth (ft)	Vertical Depth (ft)	Reference (ft)	Offset (ft)	Highside Toolface (°)	Offset Wellbore Centre +N/-S (ft)	Offset Wellbore Centre +E/-W (ft)	Between Centres (ft)	Between Ellipses (ft)	Minimum Separation (ft)	Separation Factor	Warning
0.0	0.0	0.0	0.0	0.0	0.0	89.99	0.0	20.1	20.1				
100.0	100.0	100.0	100.0	0.1	0.1	89.99	0.0	20.1	20.1	19.8	0.22	89.299	
200.0	200.0	200.0	200.0	0.3	0.3	89.99	0.0	20.1	20.1	19.4	0.67	29.766	
300.0	300.0	300.0	300.0	0.6	0.6	89.99	0.0	20.1	20.1	18.9	1.12	17.860	
400.0	400.0	400.0	400.0	0.8	0.8	89.99	0.0	20.1	20.1	18.5	1.57	12.757	
500.0	500.0	500.0	500.0	1.0	1.0	89.99	0.0	20.1	20.1	18.0	2.02	9.922	
600.0	600.0	600.0	600.0	1.2	1.2	89.99	0.0	20.1	20.1	17.6	2.47	8.118	
625.0	625.0	625.0	625.0	1.3	1.3	89.99	0.0	20.1	20.1	17.5	2.58	7.765 CC, ES	
700.0	700.0	700.0	700.0	1.5	1.5	112.57	0.0	20.1	20.4	17.5	2.92	6.993	
800.0	799.9	799.9	799.9	1.7	1.7	122.85	0.0	20.1	22.5	19.1	3.37	6.662 SF	
875.0	874.7	874.7	874.7	1.9	1.9	133.17	0.0	20.1	25.9	22.2	3.72	6.973	
900.0	899.6	899.6	899.6	1.9	1.9	140.70	0.0	20.1	27.6	23.7	3.83	7.196	
1,000.0	999.0	999.0	999.0	2.2	2.1	162.01	0.0	20.1	36.9	32.6	4.28	8.628	
1,100.0	1,098.1	1,098.1	1,098.1	2.4	2.4	173.47	0.0	20.1	49.9	45.2	4.72	10.586	
1,200.0	1,196.8	1,196.8	1,196.8	2.7	2.6	179.61	0.0	20.1	66.3	61.1	5.16	12.855	
1,300.0	1,294.8	1,294.8	1,294.8	3.1	2.8	-177.05	0.0	20.1	85.9	80.3	5.60	15.343	
1,400.0	1,392.2	1,392.2	1,392.2	3.5	3.0	-175.21	0.0	20.1	108.6	102.5	6.03	18.002	
1,417.4	1,409.0	1,409.0	1,409.0	3.5	3.1	-174.99	0.0	20.1	112.8	106.7	6.11	18.479	
1,500.0	1,489.0	1,489.0	1,489.0	3.9	3.2	-175.76	0.0	20.1	133.4	126.9	6.48	20.592	
1,600.0	1,585.9	1,585.9	1,585.9	4.4	3.5	-176.43	0.0	20.1	158.3	151.4	6.94	22.823	
1,700.0	1,682.7	1,682.7	1,682.7	4.8	3.7	-176.92	0.0	20.1	183.2	175.8	7.40	24.760	
1,800.0	1,779.5	1,779.5	1,779.5	5.3	3.9	-177.29	0.0	20.1	208.2	200.3	7.87	26.454	
1,900.0	1,876.4	1,876.4	1,876.4	5.8	4.1	-177.58	0.0	20.1	233.1	224.8	8.34	27.947	
2,000.0	1,973.2	1,973.2	1,973.2	6.3	4.3	-177.81	0.0	20.1	258.1	249.2	8.82	29.270	
2,100.0	2,070.1	2,070.1	2,070.1	6.8	4.5	-178.00	0.0	20.1	283.0	273.7	9.29	30.449	
2,200.0	2,166.9	2,166.9	2,166.9	7.3	4.8	-178.17	0.0	20.1	308.0	298.2	9.77	31.507	
2,300.0	2,263.7	2,263.7	2,263.7	7.9	5.0	-178.30	0.0	20.1	332.9	322.7	10.26	32.460	
2,400.0	2,360.6	2,360.6	2,360.6	8.4	5.2	-178.42	0.0	20.1	357.9	347.1	10.74	33.322	
2,500.0	2,457.4	2,457.4	2,457.4	8.9	5.4	-178.52	0.0	20.1	382.8	371.6	11.22	34.107	
2,600.0	2,554.2	2,554.2	2,554.2	9.4	5.6	-178.61	0.0	20.1	407.8	396.1	11.71	34.822	
2,700.0	2,651.1	2,651.1	2,651.1	9.9	5.8	-178.69	0.0	20.1	432.7	420.5	12.20	35.478	
2,800.0	2,747.9	2,747.9	2,747.9	10.4	6.1	-178.77	0.0	20.1	457.7	445.0	12.69	36.081	
2,900.0	2,844.7	2,844.7	2,844.7	11.0	6.3	-178.83	0.0	20.1	482.7	469.5	13.17	36.637	
3,000.0	2,941.6	2,941.6	2,941.6	11.5	6.5	-178.89	0.0	20.1	507.6	494.0	13.66	37.152	
3,100.0	3,038.4	3,038.4	3,038.4	12.0	6.7	-178.94	0.0	20.1	532.6	518.4	14.15	37.629	
3,200.0	3,135.2	3,135.2	3,135.2	12.5	6.9	-178.99	0.0	20.1	557.5	542.9	14.64	38.073	
3,300.0	3,232.1	3,232.1	3,232.1	13.1	7.2	-179.03	0.0	20.1	582.5	567.4	15.13	38.487	
3,400.0	3,328.9	3,328.9	3,328.9	13.6	7.4	-179.07	0.0	20.1	607.5	591.8	15.63	38.874	
3,500.0	3,425.7	3,425.7	3,425.7	14.1	7.6	-179.11	0.0	20.1	632.4	616.3	16.12	39.236	
3,600.0	3,522.6	3,522.6	3,522.6	14.7	7.8	-179.14	0.0	20.1	657.4	640.8	16.61	39.576	
3,700.0	3,619.4	3,619.4	3,619.4	15.2	8.0	-179.17	0.0	20.1	682.3	665.2	17.10	39.895	
3,800.0	3,716.2	3,716.2	3,716.2	15.7	8.2	-179.20	0.0	20.1	707.3	689.7	17.60	40.196	
3,900.0	3,813.1	3,813.1	3,813.1	16.2	8.5	-179.23	0.0	20.1	732.3	714.2	18.09	40.480	
4,000.0	3,909.9	3,909.9	3,909.9	16.8	8.7	-179.25	0.0	20.1	757.2	738.6	18.58	40.749	
4,100.0	4,006.7	4,006.7	4,006.7	17.3	8.9	-179.28	0.0	20.1	782.2	763.1	19.08	41.003	
4,200.0	4,103.6	4,103.6	4,103.6	17.8	9.1	-179.30	0.0	20.1	807.1	787.6	19.57	41.244	
4,300.0	4,200.4	4,200.4	4,200.4	18.4	9.3	-179.32	0.0	20.1	832.1	812.0	20.06	41.472	
4,387.2	4,284.8	4,284.8	4,284.8	18.8	9.5	-179.34	0.0	20.1	853.9	833.4	20.50	41.662	
4,400.0	4,297.2	4,297.2	4,297.2	18.9	9.5	-179.34	0.0	20.1	857.0	836.5	20.57	41.670	
4,500.0	4,394.6	4,394.6	4,394.6	19.3	9.8	-179.36	0.0	20.1	879.9	858.8	21.09	41.715	
4,600.0	4,492.7	4,492.7	4,492.7	19.6	10.0	-179.38	0.0	20.1	899.3	877.7	21.59	41.657	
4,700.0	4,591.4	4,591.4	4,591.4	19.9	10.2	-179.40	0.0	20.1	915.3	893.2	22.05	41.505	

CC - Min centre to center distance or convergent point, SF - min separation factor, ES - min ellipse separation

Company: Synergy Resources
Project: SEC.2-T4N-R68W
Reference Site: Pratt 14-2D Pad Sec.2-T4N-R68W
Site Error: 0.0ft
Reference Well: Pratt 13-2D
Well Error: 0.0ft
Reference Wellbore: Wellbore #1
Reference Design: Plan #1 (2-08-11)

Local Co-ordinate Reference: Well Pratt 13-2D
TVD Reference: WELL @ 5017.0ft (Original Well Elev)
MD Reference: WELL @ 5017.0ft (Original Well Elev)
North Reference: True
Survey Calculation Method: Minimum Curvature
Output errors are at 2.00 sigma
Database: Landmark
Offset TVD Reference: Offset Datum

Offset Design Pratt 14-2D Pad Sec.2-T4N-R68W - Pratt 2B (Vert.) - Wellbore #1 - Plan #1 (2-08-11)													Offset Site Error:	0.0 ft
Survey Program: O-MWD													Offset Well Error:	0.0 ft
Reference	Offset		Semi Major Axis		Distance									
Measured Depth (ft)	Vertical Depth (ft)	Measured Depth (ft)	Vertical Depth (ft)	Reference (ft)	Offset (ft)	Highside Toolface (°)	Offset Wellbore Centre +N/-S (ft)	+E/-W (ft)	Between Centres (ft)	Between Ellipses (ft)	Minimum Separation (ft)	Separation Factor	Warning	
4,800.0	4,690.6	4,690.6	4,690.6	20.2	10.4	-179.41	0.0	20.1	927.8	905.3	22.48	41.268		
4,900.0	4,790.2	4,790.2	4,790.2	20.4	10.7	-179.41	0.0	20.1	936.9	914.0	22.88	40.950		
5,000.0	4,890.0	4,890.0	4,890.0	20.5	10.9	-179.42	0.0	20.1	942.5	919.2	23.24	40.556		
5,100.0	4,990.0	4,990.0	4,990.0	20.7	11.1	-179.42	0.0	20.1	944.5	921.0	23.56	40.089		
5,110.0	5,000.0	5,000.0	5,000.0	20.7	11.1	124.02	0.0	20.1	944.6	921.0	23.59	40.038		
5,200.0	5,090.0	5,090.0	5,090.0	20.8	11.3	124.02	0.0	20.1	944.6	920.6	23.95	39.442		
5,300.0	5,190.0	5,190.0	5,190.0	20.9	11.6	124.02	0.0	20.1	944.6	920.2	24.36	38.782		
5,400.0	5,290.0	5,290.0	5,290.0	21.0	11.8	124.02	0.0	20.1	944.6	919.8	24.77	38.141		
5,500.0	5,390.0	5,390.0	5,390.0	21.1	12.0	124.02	0.0	20.1	944.6	919.4	25.18	37.519		
5,600.0	5,490.0	5,490.0	5,490.0	21.2	12.2	124.02	0.0	20.1	944.6	919.0	25.59	36.915		
5,700.0	5,590.0	5,590.0	5,590.0	21.4	12.5	124.02	0.0	20.1	944.6	918.6	26.00	36.329		
5,800.0	5,690.0	5,690.0	5,690.0	21.5	12.7	124.02	0.0	20.1	944.6	918.2	26.41	35.760		
5,900.0	5,790.0	5,790.0	5,790.0	21.6	12.9	124.02	0.0	20.1	944.6	917.7	26.83	35.206		
6,000.0	5,890.0	5,890.0	5,890.0	21.7	13.1	124.02	0.0	20.1	944.6	917.3	27.25	34.669		
6,100.0	5,990.0	5,990.0	5,990.0	21.9	13.4	124.02	0.0	20.1	944.6	916.9	27.66	34.146		
6,200.0	6,090.0	6,090.0	6,090.0	22.0	13.6	124.02	0.0	20.1	944.6	916.5	28.08	33.638		
6,300.0	6,190.0	6,190.0	6,190.0	22.1	13.8	124.02	0.0	20.1	944.6	916.1	28.50	33.144		
6,400.0	6,290.0	6,290.0	6,290.0	22.3	14.0	124.02	0.0	20.1	944.6	915.6	28.92	32.663		
6,500.0	6,390.0	6,390.0	6,390.0	22.4	14.3	124.02	0.0	20.1	944.6	915.2	29.34	32.194		
6,600.0	6,490.0	6,490.0	6,490.0	22.6	14.5	124.02	0.0	20.1	944.6	914.8	29.76	31.739		
6,700.0	6,590.0	6,590.0	6,590.0	22.7	14.7	124.02	0.0	20.1	944.6	914.4	30.18	31.295		
6,800.0	6,690.0	6,690.0	6,690.0	22.8	14.9	124.02	0.0	20.1	944.6	914.0	30.61	30.862		
6,900.0	6,790.0	6,790.0	6,790.0	23.0	15.1	124.02	0.0	20.1	944.6	913.5	31.03	30.441		
7,000.0	6,890.0	6,890.0	6,890.0	23.1	15.4	124.02	0.0	20.1	944.6	913.1	31.45	30.031		
7,100.0	6,990.0	6,990.0	6,990.0	23.3	15.6	124.02	0.0	20.1	944.6	912.7	31.88	29.630		
7,200.0	7,090.0	7,090.0	7,090.0	23.4	15.8	124.02	0.0	20.1	944.6	912.3	32.30	29.240		
7,300.0	7,190.0	7,190.0	7,190.0	23.6	16.0	124.02	0.0	20.1	944.6	911.8	32.73	28.859		
7,400.0	7,290.0	7,290.0	7,290.0	23.7	16.3	124.02	0.0	20.1	944.6	911.4	33.16	28.488		
7,500.0	7,390.0	7,390.0	7,390.0	23.9	16.5	124.02	0.0	20.1	944.6	911.0	33.58	28.125		
7,600.0	7,490.0	7,490.0	7,490.0	24.0	16.7	124.02	0.0	20.1	944.6	910.6	34.01	27.772		
7,700.0	7,590.0	7,590.0	7,590.0	24.2	16.9	124.02	0.0	20.1	944.6	910.1	34.44	27.426		
7,800.0	7,690.0	7,690.0	7,690.0	24.3	17.2	124.02	0.0	20.1	944.6	909.7	34.87	27.089		
7,900.0	7,790.0	7,790.0	7,790.0	24.5	17.4	124.02	0.0	20.1	944.6	909.3	35.30	26.759		
8,000.0	7,890.0	7,890.0	7,890.0	24.6	17.6	124.02	0.0	20.1	944.6	908.8	35.73	26.437		
8,100.0	7,990.0	7,990.0	7,990.0	24.8	17.8	124.02	0.0	20.1	944.6	908.4	36.16	26.123		
8,140.0	8,030.0	8,030.0	8,030.0	24.8	17.9	124.02	0.0	20.1	944.6	908.2	36.33	25.999		

Company: Synergy Resources
Project: SEC.2-T4N-R68W
Reference Site: Pratt 14-2D Pad Sec.2-T4N-R68W
Site Error: 0.0ft
Reference Well: Pratt 13-2D
Well Error: 0.0ft
Reference Wellbore: Wellbore #1
Reference Design: Plan #1 (2-08-11)

Local Co-ordinate Reference: Well Pratt 13-2D
TVD Reference: WELL @ 5017.0ft (Original Well Elev)
MD Reference: WELL @ 5017.0ft (Original Well Elev)
North Reference: True
Survey Calculation Method: Minimum Curvature
Output errors are at 2.00 sigma
Database: Landmark
Offset TVD Reference: Offset Datum

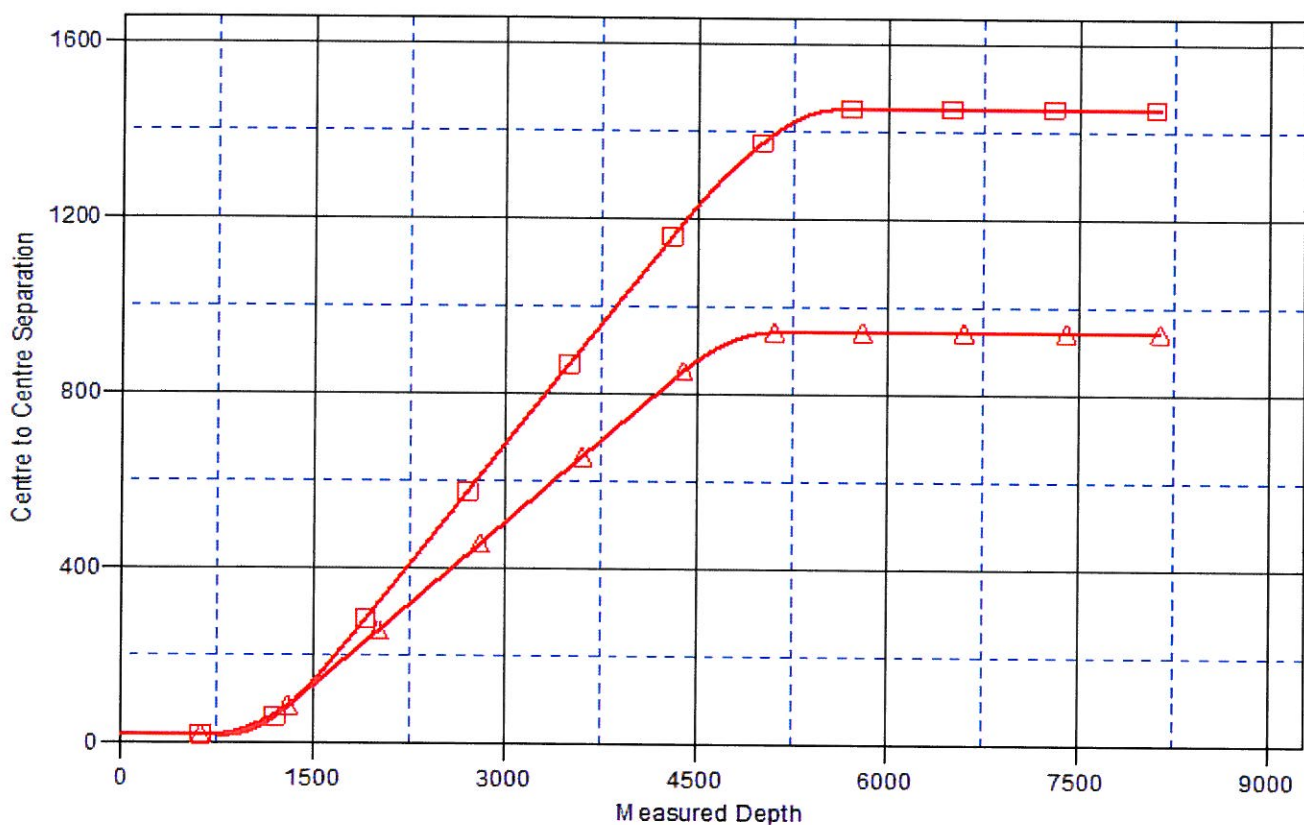
Reference Depths are relative to WELL @ 5017.0ft (Original Well Elev) Coordinates are relative to: Pratt 13-2D

Offset Depths are relative to Offset Datum

Coordinate System is US State Plane 1983, Colorado Northern Zone

Grid Convergence at Surface is: 0.34°

Ladder Plot



LEGEND

Pratt 14-2D, Wellbore #1, Plan #1 (2-10-11) V0 ■ Pratt 2B (Vert.), Wellbore #1, Plan #1 (2-08-11) V0 ▲

Company: Synergy Resources
Project: SEC.2-T4N-R68W
Reference Site: Pratt 14-2D Pad Sec.2-T4N-R68W
Site Error: 0.0ft
Reference Well: Pratt 13-2D
Well Error: 0.0ft
Reference Wellbore: Wellbore #1
Reference Design: Plan #1 (2-08-11)

Local Co-ordinate Reference: Well Pratt 13-2D
TVD Reference: WELL @ 5017.0ft (Original Well Elev)
MD Reference: WELL @ 5017.0ft (Original Well Elev)
North Reference: True
Survey Calculation Method: Minimum Curvature
Output errors are at 2.00 sigma
Database: Landmark
Offset TVD Reference: Offset Datum

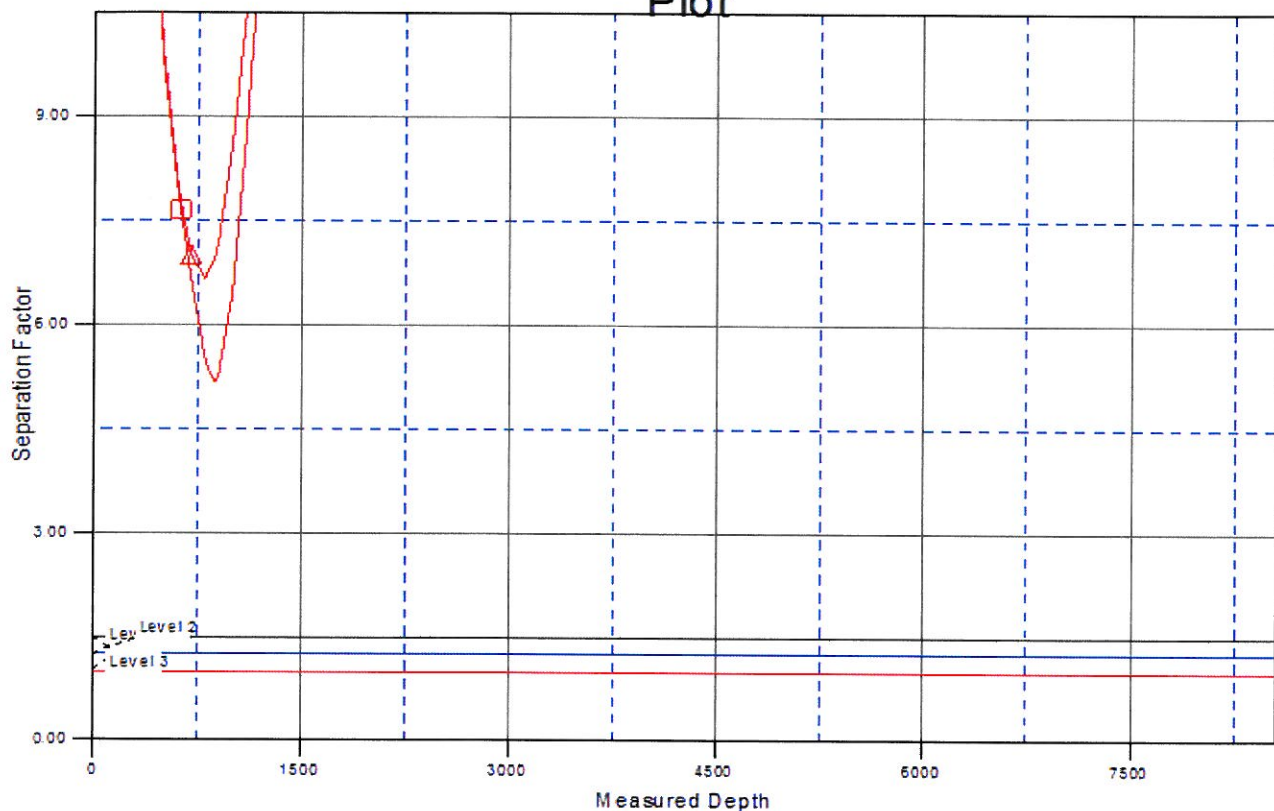
Reference Depths are relative to WELL @ 5017.0ft (Original Well Elev) Coordinates are relative to: Pratt 13-2D

Offset Depths are relative to Offset Datum

Coordinate System is US State Plane 1983, Colorado Northern Zone

Grid Convergence at Surface is: 0.34°

Separation Factor Plot



LEGEND

Pratt 14-2D, Wellbore #1, Plan #1 (2-10-11) V0 ▲ Pratt 2B (Vert.), Wellbore #1, Plan #1 (2-08-11) V0