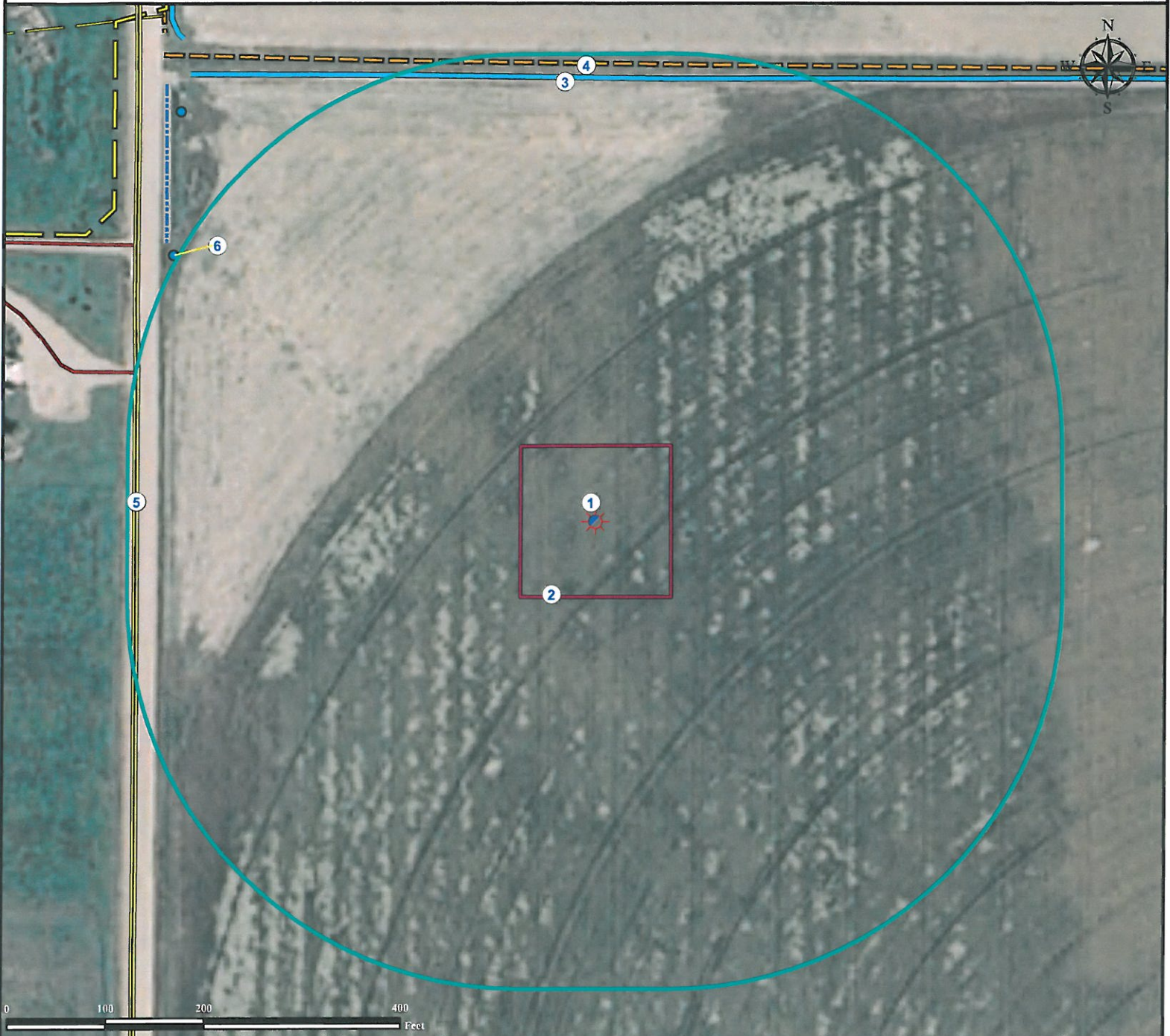


Location Drawing SPENCER 21-13

NW¼ SW¼ SECTION 21, TOWNSHIP 7 NORTH, RANGE 65 WEST OF THE 6TH PRINCIPAL MERIDIAN



- | | |
|----------------------------------------------------------------------------------------------|---------------------------------------------|
| 1. Proposed Well SPENCER 21-13. | 4. Fence is $\pm 470'$ N. |
| 2. Operational Disturbance Area. | 5. County Road 41 is $\pm 470'$ W. |
| 3. Dirt Irrigation Ditch (nonbermed) is $\pm 453'$ N.
Feature was dry at time of mapping. | 6. Irrigation Water Valve is $\pm 509'$ NW. |

Legend

- | | | |
|---------------|----------------|------------------|
| Proposed Well | Fence | Power Line |
| Water Valve | Concrete Ditch | Disturbance Area |
| Private Road | Dirt Ditch | 400' Radius |

Reference Location
 ** All Measurements are Made from
 Reference Well SPENCER 21-13 **
 Lat: 40.55926° Long: -104.67588
 Elevation: 4845 Feet

Surface Use: Irrigated Cropland



Use our resources to find yours!
www.petro-fs.com
 (303) 928-7128

Field Date: 02/14/2011
 Drafting Date: 02/22/2011
 Drafter: KLM
 Checked By: BHF

Data Sources:
 - Aerial courtesy of NAIP (2009)

Prepared for: ORR ENERGY LLC

