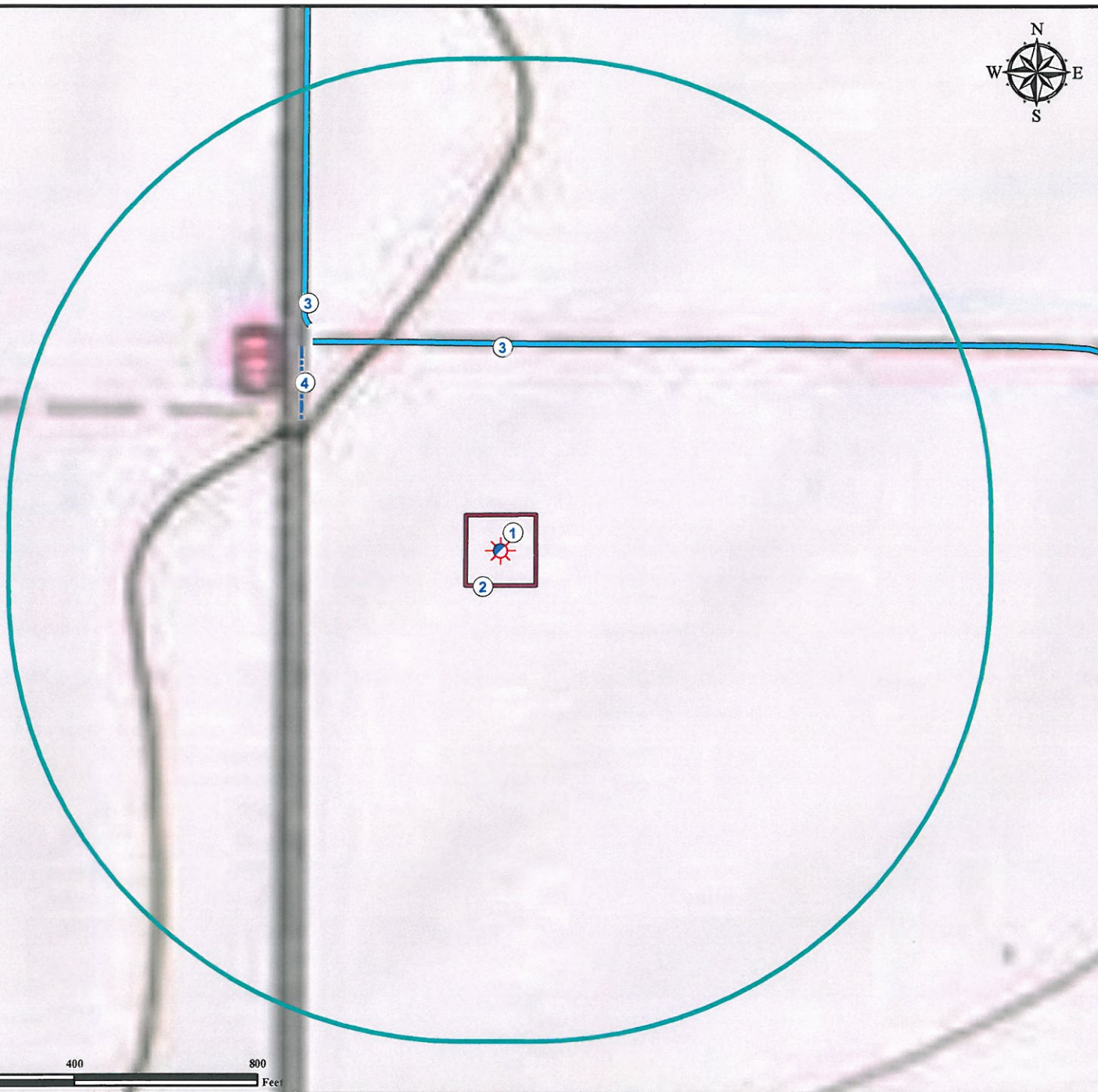


# Hydrology Map SPENCER 21 - 13

NW¼ SW¼ SECTION 21, TOWNSHIP 7 NORTH, RANGE 65 WEST OF THE 6TH PRINCIPAL MERIDIAN



0 200 400 800 Feet

1. Proposed Well SPENCER 21-23.
2. Operational Disturbance Area.
3. Dirt Irrigation Ditches (nonbermed) are  $\pm 453'$  N and  $\pm 655'$  NW. Feature dry at time of mapping.
4. Concrete Irrigation Ditch is  $\pm 522'$  NW. Feature dry at time of mapping.

## Legend

- |               |                |                  |
|---------------|----------------|------------------|
| Proposed Well | Concrete Ditch | Disturbance Area |
| Dirt Ditch    | 1000' Radius   |                  |

## Reference Location

\*\* All Measurements are Made from Reference Well SPENCER 21-13 \*\*  
 Lat: 40.55926° Long: -104.67588°  
 Elevation: 4845 Feet



Use our resources to find yours!  
[www.petro-fs.com](http://www.petro-fs.com)  
 (303) 928-7128

Field Date: 02/14/2011  
 Drafting Date: 02/22/2011  
 Drafter: KLM  
 Checked By: BHF

Data Sources:  
 - Aerial courtesy of NAIP (2009)

Prepared for: ORR ENERGY LLC

