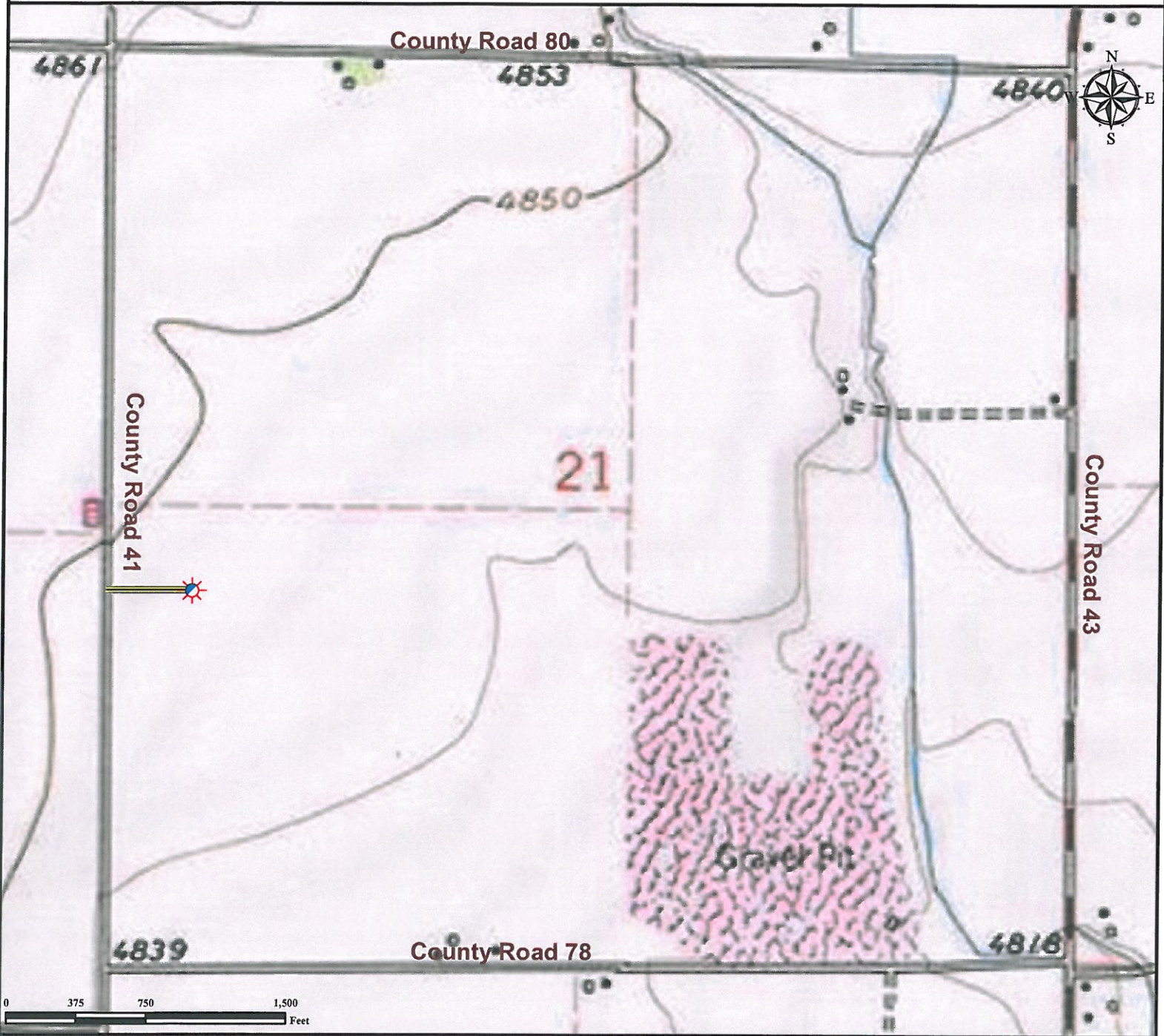


# Access Road Map SPENCER 21-13

NW¼ SW¼ SECTION 21, TOWNSHIP 7 NORTH, RANGE 65 WEST OF THE 6TH PRINCIPAL MERIDIAN



## Legend



Proposed Well



Access Road

**Reference Location**  
\*Reference Well SPENCER 21-13 \*

Lat: 40.55926° Long: -104.67588°  
Elevation: 4845 Feet



Use our resources to find yours!  
[www.petro-fs.com](http://www.petro-fs.com)  
(303) 928-7128

Field Date: 02/14/2011  
Drafting Date: 02/22/2011  
Drafter: KLM  
Checked By: BHF

Data Sources:  
- Topo courtesy USGS

Prepared for: ORR ENERGY LLC

