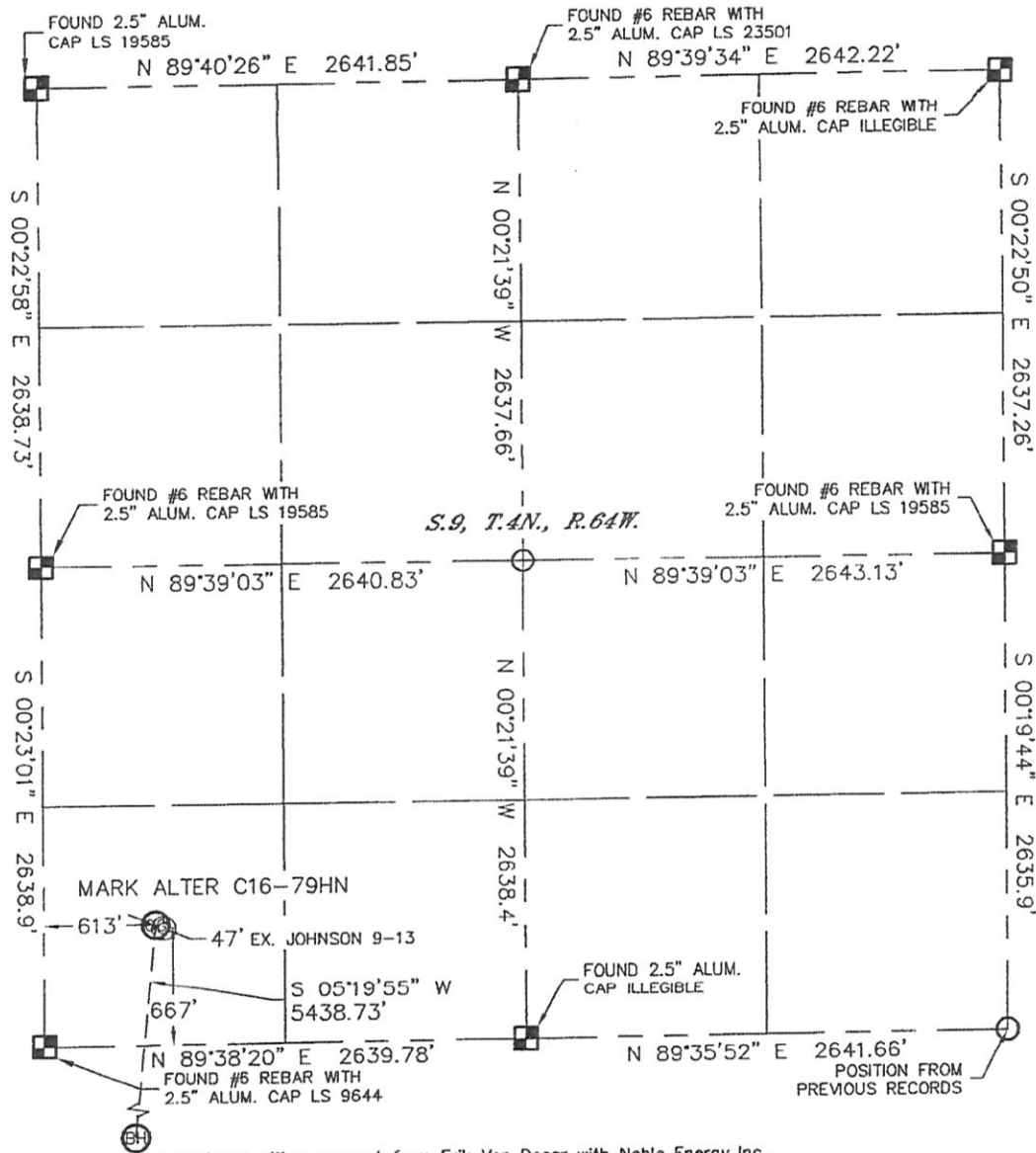


WELL LOCATION CERTIFICATE

SECTION: 9
TOWNSHIP: 4N
RANGE: 64W

THIS MAP DOES NOT REPRESENT A BOUNDARY SURVEY



In accordance with a request from Erik Van Decar with Noble Energy Inc. Lat40°, Inc. has determined the surface location of the MARK ALTER C16-79HN to be 667' from the SOUTH line and 613' from the WEST line as measured at right angles from the section lines of Section 9, Township 4 North, Range 64 West and the bottom hole to be 535' from the SOUTH line and 75' from the WEST line as measured at right angles from the section lines of Section 16, Township 4 North, Range 64 West of the Sixth Principal Meridian, County of Weld, State of Colorado.

I hereby state that this Well Location Certificate was prepared by me, or under my direct supervision, that the fieldwork was completed on 1/19/11, for and on behalf of Noble Energy Inc. That this is not a Land Survey Plat or an Improvement Survey Plat, and that it is not to be relied upon for establishment of fence, building, or other future improvement lines.

SURFACE LOCATION
LATITUDE: 40.32150°N
LONGITUDE: 104.56285°W
PDOP: 2.3
ELEV: 4702
1/4, 1/4: SW1/4SW1/4
NEAREST PROPERTY LINE: 346' SOUTHWEST

BOTTOM HOLE
LATITUDE: 40.30665°N
LONGITUDE: 104.56487°W

NOTE:

- 1) Bearings shown are Grid Bearings of the Colorado State Plane Coordinate System, North Zone, North American Datum 1983/2007. The lineal dimensions as contained herein are based upon the "U.S. Survey Foot."
- 2) Ground elevations are based on an observed GPS elevation (NAVD 1988 DATUM).
- 3) NEAREST EXISTING WELL: JOHNSON 9-13 47'
- 4) IMPROVEMENTS: See LOCATION DRAWING for all visible improvements within 400' of disturbed area.
- 5) SURFACE USE: CROP FIELD
- 6) INSTRUMENT OPERATOR: BRIAN BRINKMAN

NOTE

According to Colorado law, you must commence any legal action based upon any defect in this W.L.C. within three years after you discover such defect. In no event, may any action based upon any defect in this survey be commenced more than ten years after the date of the certificate shown hereon. (13-80-105 C.R.S.)

LEGEND

- = ALIQUOT MONUMENT AS DESCRIBED
- = CALCULATED POSITION

SHEET 1 OF 2

Brian T. Brinkman—On behalf of
Colorado Licensed Professional
Land Surveyor No. 38175 PROJECT#: 2011011



Lat40°, Inc.

1635 Foxtrail Drive, Suite 325

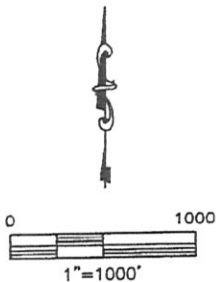
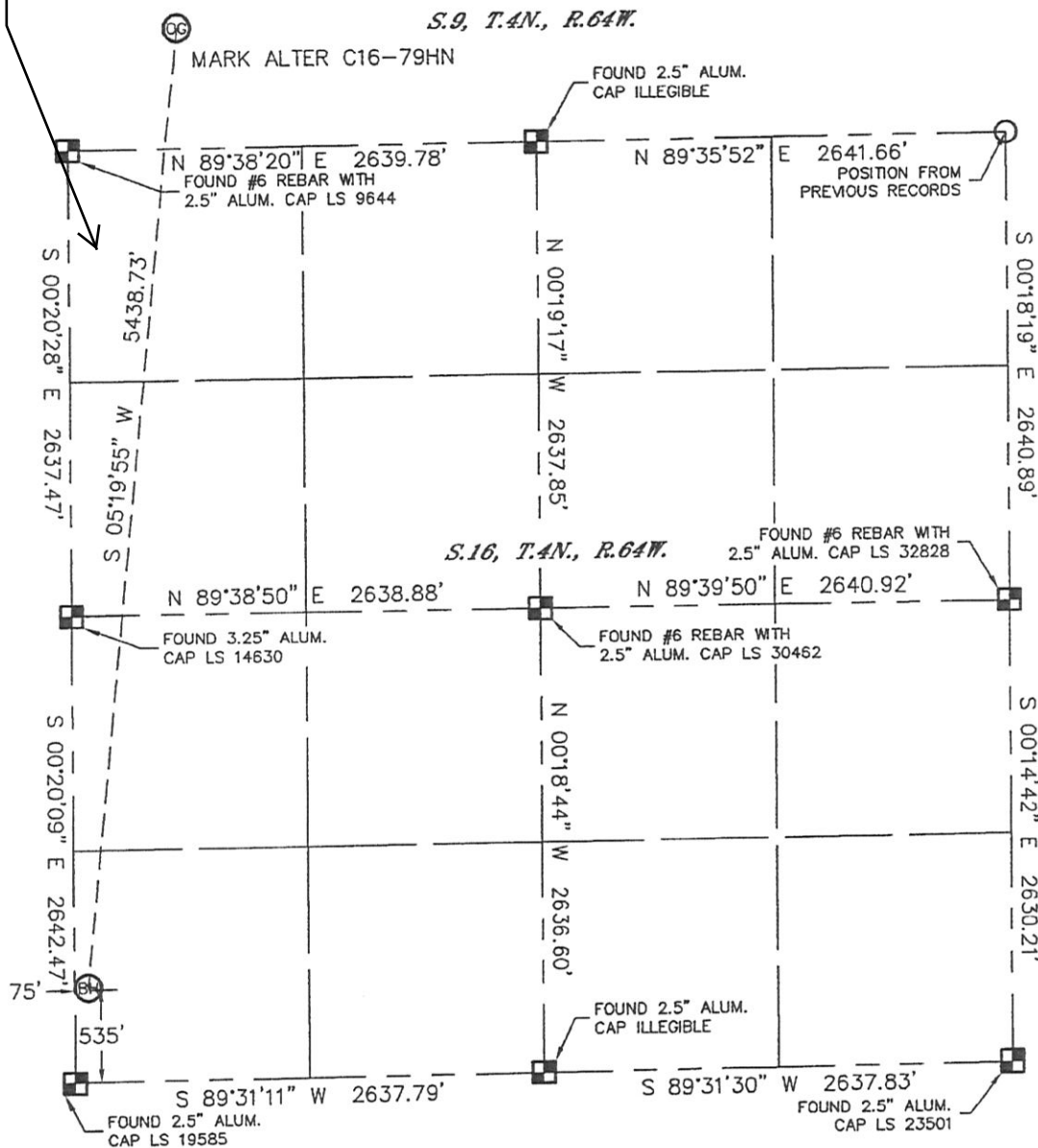
Loveland, CO 80538

WELL LOCATION CERTIFICATE

THIS MAP DOES NOT REPRESENT A BOUNDARY SURVEY

SECTION: 9
TOWNSHIP: 4N
RANGE: 64W

Casing Pt @ 705' FNL, 75' FWL



NOTE
According to Colorado law, you must commence any legal action based upon any defect in this W.L.C. within three years after you discover such defect. In no event, may any action based upon any defect in this survey be commenced more than ten years after the date of the certificate shown hereon. (13-80-105 C.R.S.)

LEGEND

- = ALIQUOT MONUMENT AS DESCRIBED
- = CALCULATED POSITION

SHEET 2 of 2

Brian T. Brinkman—On behalf of Lat40°, Inc.
Colorado Licensed Professional
Land Surveyor No. 38175

PROJECT#: 2011011

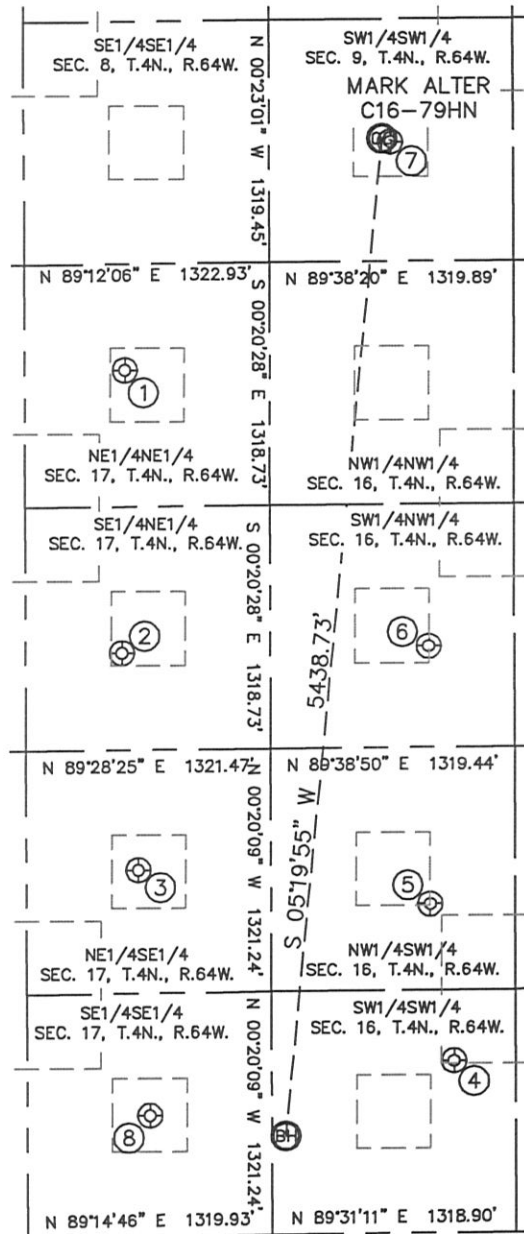


Lat40°, Inc. 1635 Foxtrail Drive, Suite 325 Loveland, CO 80538

SITE SKETCH

MARK ALTER C16-79HN

SECTION: 9
TOWNSHIP: 4N
RANGE: 64W



①
CPC-HARLESS 17-1
NE1/4NE1/4
574' FNL
783' FEL
LAT-40.31809°N
LONG-104.56787°W
PDOP: 3.6
ELEV: 4711

②
HARLESS PM C17-8
SE1/4NE1/4
2107' FNL
801' FEL
LAT-40.31389°N
LONG-104.56796°W
PDOP: 3.1
ELEV: 4705

③
OCOMA C17-9
NE1/4SE1/4
1993' FSL
717' FEL
LAT-40.31065°N
LONG-104.56768°W
PDOP: 3.3
ELEV: 4700

④
STATE A 14-16X
SW1/4SW1/4
935' FSL
987' FEL
LAT-40.30774°N
LONG-104.56159°W
PDOP: 1.1
ELEV: 4686

⑤
STATE 16-1214
NW1/4SW1/4
1788' FSL
860' FWL
LAT-40.31009°N
LONG-104.56203°W
PDOP: 1.1
ELEV: 4684

⑥
STATE 16-514
SW1/4NW1/4
2088' FNL
857' FWL
LAT-40.31393°N
LONG-104.56202°W
PDOP: 1.3
ELEV: 4688

⑦
JOHNSON 9-13
SW1/4SW1/4
649' FSL
657' FWL
LAT-40.32145°N
LONG-104.56269°W
PDOP: 1.9
ELEV: 4701

⑧
OCOMA C17-16
SE1/4SE1/4
658' FSL
658' FEL
LAT-40.30699°N
LONG-104.56749°W
PDOP: 1.2
ELEV: 4697

