

API #: 05-103-08251

Rem #: 447

7-18 Cathedral Federal (05-103-08251)

18-14 Cathedral Federal (05-103-09730)

API #: 05-103-08251

Land Type: Rangeland

Receptor Name: Bull Draw

Legal: NW SW, Sec.18, T2S R101W

Soil Series/Map Symbol:CO685, 74

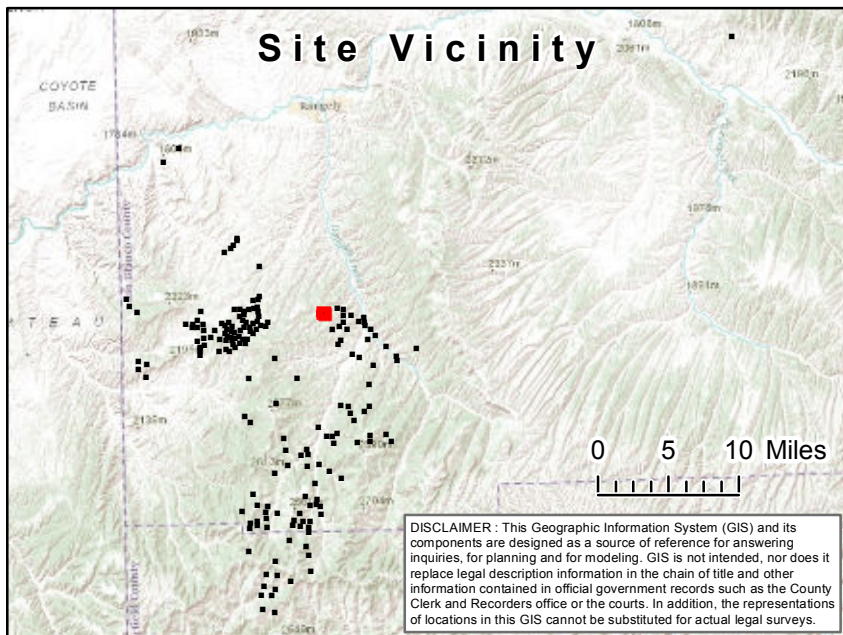
Receptor Distance: 142 Feet

Sensitive Area (Y/N): Yes

Altitude:6000 Feet

Receptor Type: Intermittent/Ephemeral

Site Vicinity



Aerial Site Detail Map

Location:

7-18 Cathedral Federal (05-103-08251)

Encana Oil and Gas (USA) Inc.

Legend

Encana Wells

Roads

PLSS

Township

Section

Direction to
receiving waters

Hydrography

Gauging Station

Spring/Seep

Water Intake/Outflow

Waterfall

Water Well

Lake/Pond

Perennial Stream

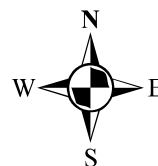
Intermittent/Ephemeral Stream

Ditch/Canal/Aqueduct

Stream Connector

Artificial Flow Path

500' Hydrography Buffer



0 250 500 Feet

HSL COMPLIANCE
SOLUTIONS, INC.
Environmental Consulting