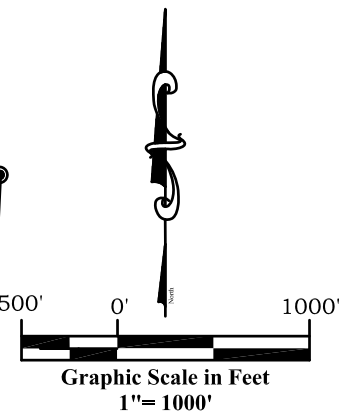
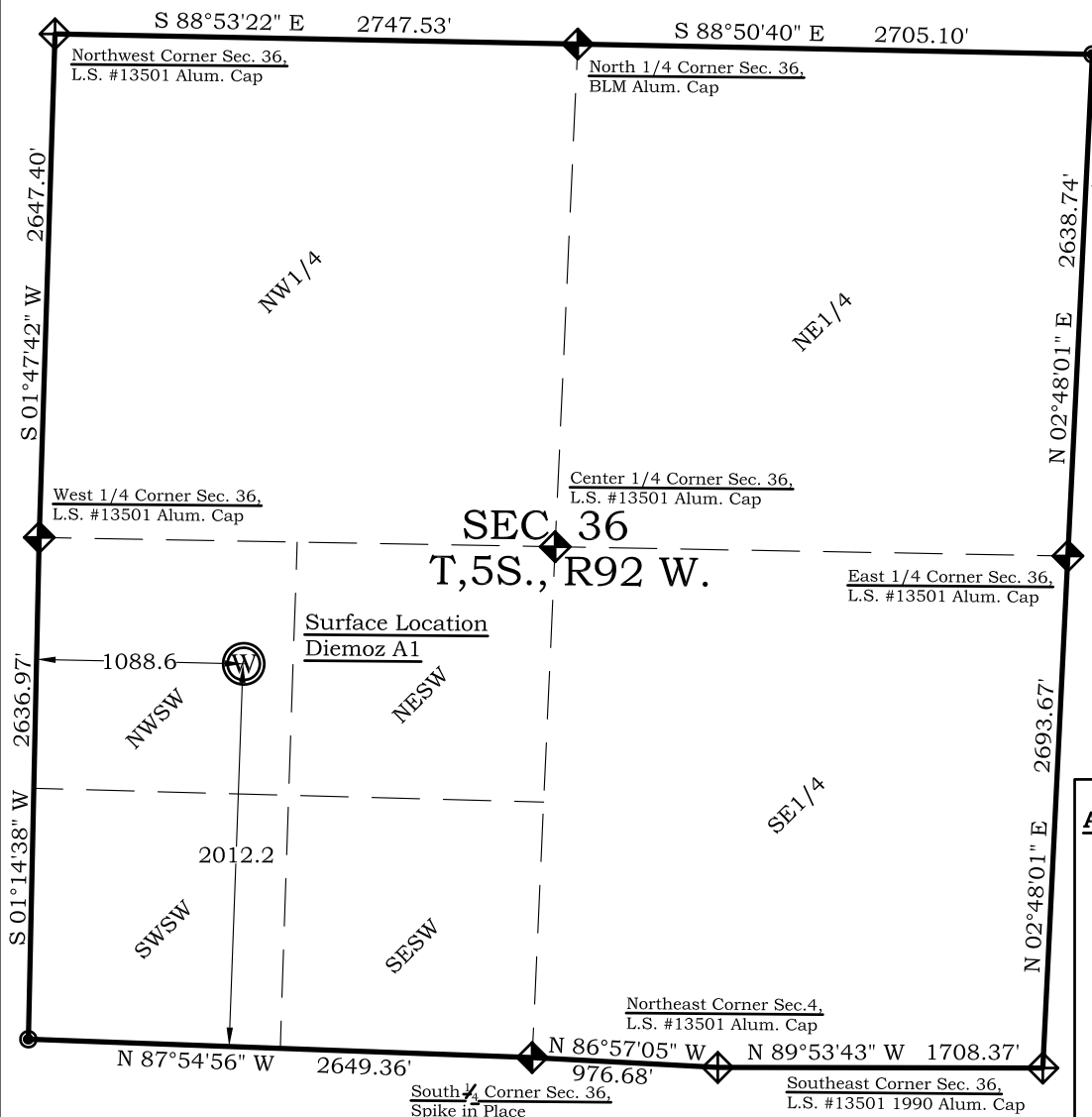


As Drilled Well Location Plat

Diemoz A3

Section 36, Township 5 South, Range 92 West



Legend

- Field Surveyed Section Corner
- Field Surveyed Quarter Corner
- Calculated Section Corner Location
- Field Surveyed 1/6 Corner

Diemoz A3 As Drilled Surface Location

2012' FSL
1089' FWL
Gnd El= 5649.5
NAD83
Lat: 39.569539244°N
Long: 107.672092108°W
NAD27
Lat: 39.569558718°N
Long: 107.671476110°W
UTM 13 NORTH
NAD 1983
Northing
14381181.570
Easting
887365.058

Prepared For Antero Resources
As Drilled Diemoz A3 Well Situate in The NW 1/4 SW 1/4
Section 36, Township 5 South, Range 92 West of the 6 th.
Principal Meridian, County of Garfield, State of Colorado

SURVEYOR'S CERTIFICATE

I, SCOTT E. AIBNER, A REGISTERED LAND SURVEYOR, LICENSED UNDER THE LAWS OF THE STATE OF COLORADO DO HEREBY CERTIFY THAT THE SURVEY SHOWN HEREON WAS PREPARED BY RIVER VALLEY SURVEY, INC., FOR ANTERO RESOURCES, BY ME OR UNDER MY DIRECT SUPERVISION AND THAT THIS PLAT IS A TRUE REPRESENTATION THEREOF.

BY: 
SCOTT E. AIBNER, COLORADO REG. NO. 31143

Notes:

- LATITUDE AND LONGITUDE COORDINATES ARE DIFFERENTIALLY CORRECTED AND BASED ON PUBLISHED NGS CONTROL STATION "WDP-5". SYSTEM: UTM ZONE: 13 NORTH DATUM: NAD 1983 (CONUS)
- ELEVATIONS ARE BASED ON NAVD OF 1983.
- ALL BOTTOM AND TOP HOLE LOCATIONS ARE MEASURED 90 DEGREES FROM SECTION LINE.
- USGS QUADRANGLE MAP "SILT".
- CURRENT SURFACE LAND USE: HAY FIELD.
- PDOP AT THE TIME OF LOCATION OF SURFACE WELL = 2.4



River Valley Survey, Inc.
110 East 3rd. Street, Suite 213
Rifle, Colorado 81650
Ph: 970-379-7846

Project: Diemoz A Pad

Field Date: 11-19-10

Date: 11-22-10

Scale: 1" = 1000'

Sheet: 1 of 1

As Drilled Well Location Plat
Prepared For Antero Resources

Situate In:
SW 1/4 Section 36, T5S., R. 92 W. of the
6th P.M., Garfield County, Colorado

