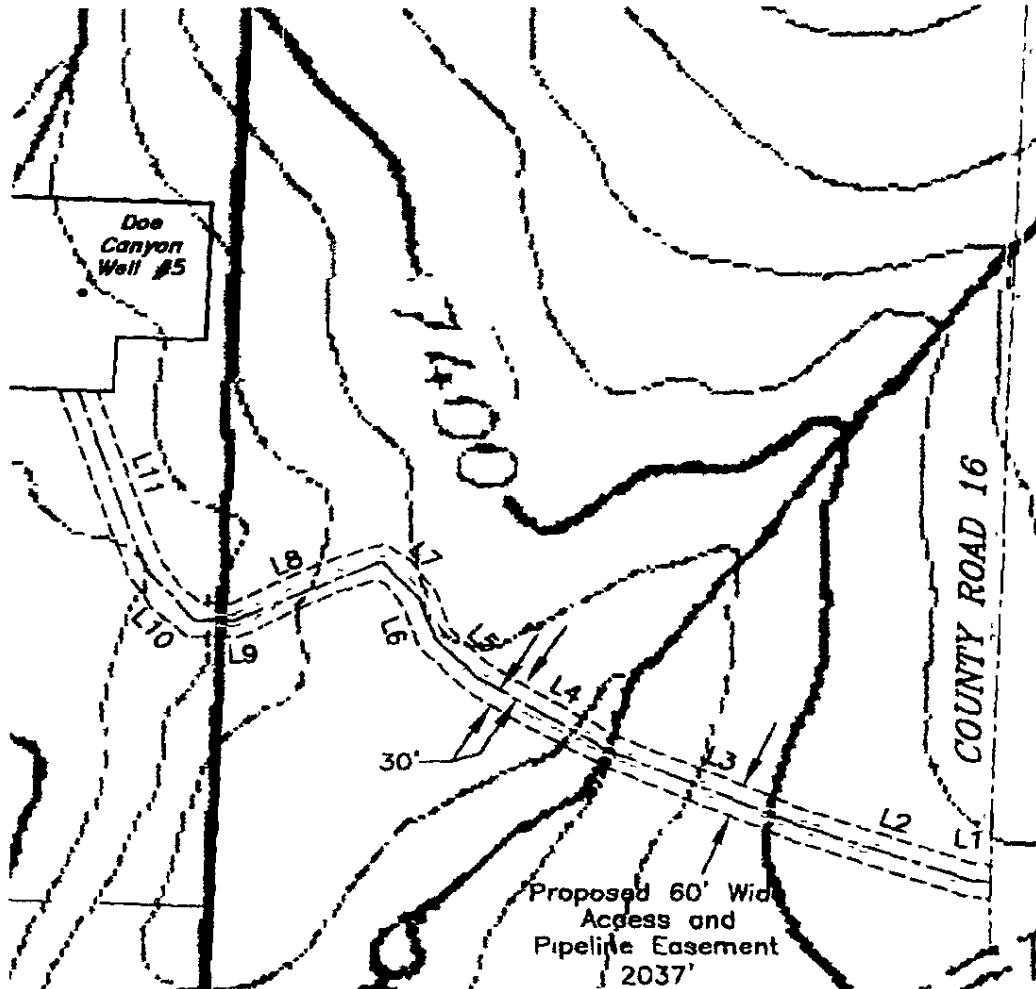


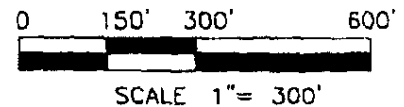
KINDER MORGAN
DC WELL #5
PROPOSED ACCESS AND PIPELINE
EASEMENT EXHIBIT

Section 18 40N 17W NMPM
Dolores County, Colorado



LINE TABLE		
LINE	LENGTH	BEARING
L1	35.21'	N 63°14'19" V
L2	303.04'	N 71°07'31" V
L3	345.40'	N 67°14'46" V
L4	268.70'	N 59°19'12" V
L5	99.03'	N 45°42'44" V
L6	78.46'	N 20°37'58" V
L7	94.96'	N 42°52'29" V
L8	270.13'	S 66°03'21" V
L9	68.46'	N 89°10'03" V
L10	127.53'	N 40°16'33" V
L11	345.78'	N 19°14'21" V

U.S.G.S TOPO QUAD
DOE CANYON



MANESS & Associates Inc.
REGISTERED LAND SURVEYORS

28 S. Washington - P.O. Box 1163 - Cortez, CO 81321
Date: November 28, 2008 Phone: 970/565-8845 File: 2006-10-R10