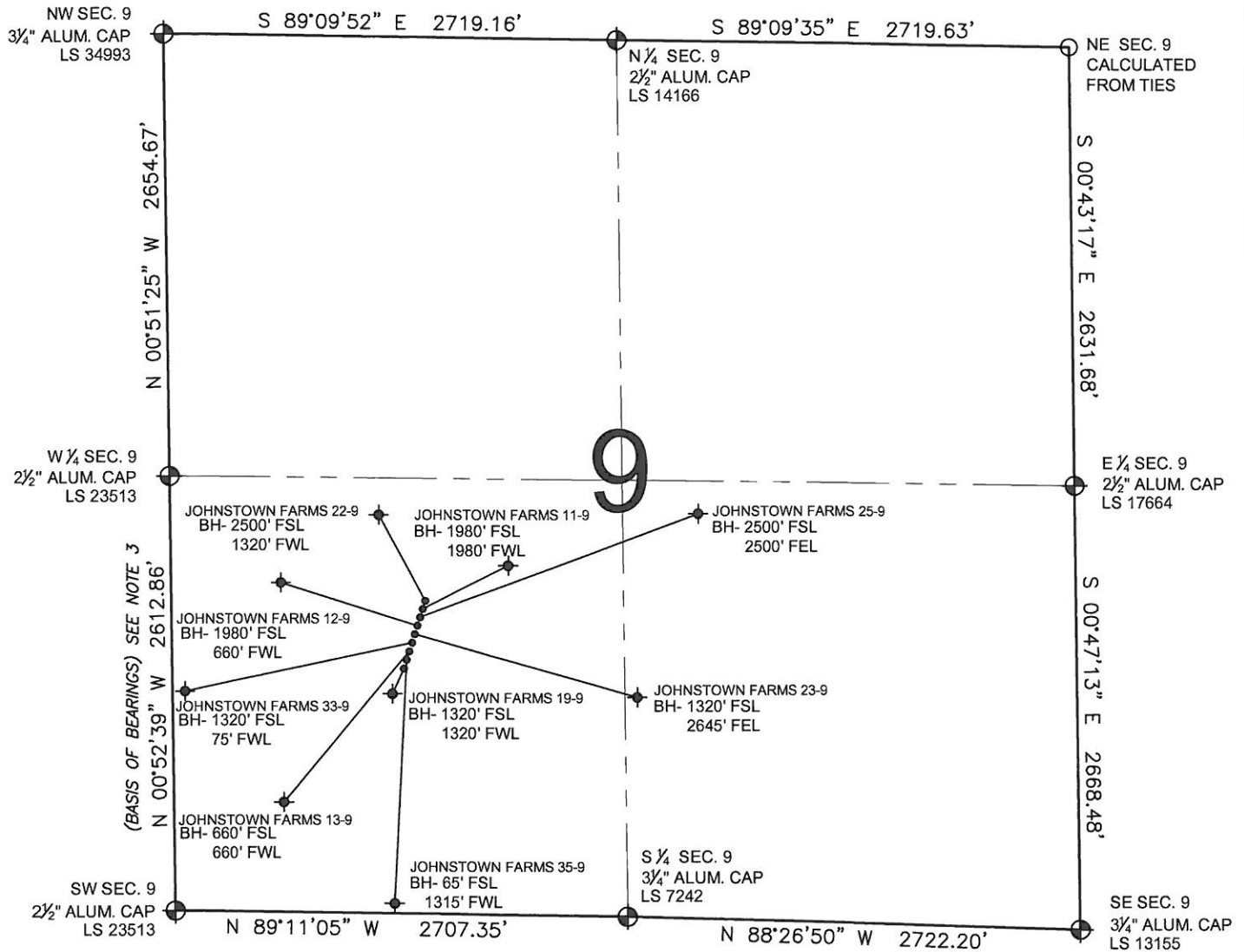


# PAD DRAWING: JOHNSTOWN FARMS 9-PAD

SECTION 9, TOWNSHIP 4 NORTH, RANGE 67 WEST, 6TH P.M.



## NOTES:

JOHNSTOWN FARMS 19-9 TO BE AT 1533' FSL, 1410' FWL.  
BOTTOM HOLE AT 1320' FSL & 1320' FWL.  
JOHNSTOWN FARMS 35-9 TO BE AT 1543' FSL, 1412' FWL.  
BOTTOM HOLE AT 65' FSL & 1315' FWL.  
JOHNSTOWN FARMS 13-9 TO BE AT 1552' FSL, 1414' FWL.  
BOTTOM HOLE AT 660' FSL & 660' FWL.  
JOHNSTOWN FARMS 33-9 TO BE AT 1562' FSL, 1417' FWL.  
BOTTOM HOLE AT 1320' FSL & 75' FWL.  
JOHNSTOWN FARMS 23-9 TO BE AT 1572' FSL, 1419' FWL.  
BOTTOM HOLE AT 1320' FSL & 2645' FEL.  
JOHNSTOWN FARMS 12-9 TO BE AT 1582' FSL, 1422' FWL.  
BOTTOM HOLE AT 1980' FSL & 660' FWL.  
JOHNSTOWN FARMS 25-9 TO BE AT 1592' FSL, 1424' FWL.  
BOTTOM HOLE AT 2500' FSL & 2500' FEL.  
JOHNSTOWN FARMS 11-9 TO BE AT 1601' FSL, 1426' FWL.  
BOTTOM HOLE AT 1980' FSL & 1980' FWL.  
JOHNSTOWN FARMS 22-9 TO BE AT 1611' FSL, 1429' FWL.  
BOTTOM HOLE AT 2500' FSL & 1320' FWL.

## NOTES:

- THIS SURVEY WAS DONE BY GPS METHODS AND CONFORMS TO THE MINIMUM STANDARDS SET BY THE C.O.G.C.C., RULE NO. 215
- ELEVATIONS SHOWN AT THE WELL HEAD, AS WELL AS HORIZONTAL CONTROL, ARE BASED ON GPS-RTK VALUES DERIVED FROM DOING 2-HOUR STATIC GPS SESSIONS AND REDUCTIONS USING O.P.U.S. SOLUTIONS.  
VERTICAL = NAVD88; HORIZONTAL = NAD83/92
- THE BEARINGS SHOWN HEREON ARE BASED ON GPS OBSERVATIONS BETWEEN THE MONUMENTS SHOWN HEREON AS FOUND ON THE FIELD DATE BELOW.
- DISTANCES SHOWN ARE AT GROUND LEVEL, AS MEASURED IN THE FIELD, WITH TIES TO WELLS MEASURED AT A PERPENDICULAR TO SECTION LINES.

PREPARED BY:

**PFS**

Petroleum Field Services, LLC  
1801 W. 13th Ave.  
Denver, CO 80204



KERR-MCGEE OIL & GAS ONSHORE LP

FIELD DATE:

06-11-10

DRAWING DATE:

02-11-11

BY:

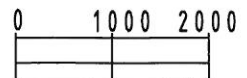
TBS

PAD NAME:

JOHNSTOWN FARMS 9-PAD

SURFACE LOCATION:

WELD COUNTY, COLORADO  
NE 1/4 SW 1/4, SEC. 9, T4N, R67W



SCALE: 1"=2000'