

TO:	SHOATS, HARRY
FROM:	
REQUESTED ON LOCATION:	29-Dec-2007 08:00 MST
CUSTOMER:	KINDER MORGAN INC
WELL NAME/NBR/LEASE:	Doe Canyon , # 5 / Doe Canyon

**TABLE OF CONTENTS:**

Work Order Contract  
Job Summary  
Job Log

**MBU LEADER:** BE SURE THAT YOU HAVE RECEIVED EACH OF THE DOCUMENTS LISTED ABOVE. IF NOT, CONTACT CENTRAL DISPATCH IMMEDIATELY.

*The Road to Excellence Starts with Safety*

Sold To #: 320986		Ship To #: 2577158		Quote #:		Sales Order #: 5585986	
Customer: KINDER MORGAN INC				Customer Rep:			
Well Name: Doe Canyon			Well #: # 5		API/UWI #: 05-033-11111		
Field: PARADOX/ DESERT CREEK		City (SAP): Pleasant View, Colorado		County/Parish: Montezuma		State: Colorado	
Contractor: Patterson UTI Drilling Co.			Rig/Platform Name/Num: Patterson UTI 17				
Job Purpose: Plug Service - Whipstock							
Well Type: Development Well			Job Type: Plug Service - Whipstock				
Sales Person: SNYDER, RANDALL			Srvc Supervisor: SHOATS, HARRY		MBU ID Emp #: 329013		

### Job Personnel

HES Emp Name	Exp Hrs	Emp #	HES Emp Name	Exp Hrs	Emp #	HES Emp Name	Exp Hrs	Emp #
DAY, DEWAYNE Santiago	4.0	420305	richesin, anthony	4.0	412961	SHOATS, HARRY T	4.0	329013

### Equipment

HES Unit #	Distance-1 way	HES Unit #	Distance-1 way	HES Unit #	Distance-1 way	HES Unit #	Distance-1 way
10025031	100 mile	10547384	100 mile	10823383	100 mile		

### Job Hours

Date	On Location Hours	Operating Hours	Date	On Location Hours	Operating Hours	Date	On Location Hours	Operating Hours
12-29-07	4	2						
TOTAL	Total is the sum of each column separately							

Job				Job Times			
Formation Name				Date	Time	Time Zone	
Formation Depth (MD)	Top		Bottom	Called Out	29 - Dec - 2007	03:00	MST
Form Type	BHST			On Location	29 - Dec - 2007	12:30	MST
Job depth MD	8600. ft		Job Depth TVD	8600. ft	Job Started	29 - Dec - 2007	14:30
Water Depth			Wk Ht Above Floor	6. ft	Job Completed	29 - Dec - 2007	15:09
Perforation Depth (MD)	From		To	Departed Loc	29 - Dec - 2007	16:30	MST

### Well Data

Description	New / Used	Max pressure psig	Size in	ID in	Weight lbm/ft	Thread	Grade	Top MD ft	Bottom MD ft	Top TVD ft	Bottom TVD ft
9 5/8" Surface Pipe	Used		9.625	8.921	36.		J-55	.	2998.	.	2998.
8 3/4" Open Hole				8.75				2998.	5300.	2998.	5300.
7" Production Casing	Used		7.	6.184	29.		P-110	.	8510.	.	8510.
2 7/8 Tubing	Used		2.375	1.995	4.7		P-110	.	8533.	.	8533.
4 3/4 Open Hole				4.75				8510.	8600.	8510.	8600.

### Tools and Accessories

Type	Size	Qty	Make	Depth	Type	Size	Qty	Make	Depth	Type	Size	Qty	Make
Guide Shoe					Packer					Top Plug			
Float Shoe					Bridge Plug					Bottom Plug			
Float Collar					Retainer					SSR plug set			
Insert Float										Plug Container			
Stage Tool										Centralizers			

### Miscellaneous Materials

Gelling Agt	Conc	Surfactant	Conc	Acid Type	Qty/	Conc	%
Treatment Fld	Conc	Inhibitor	Conc	Sand Type	Size	Qty	

Fluid Data										
Stage/Plug #: 1										
Fluid #	Stage Type	Fluid Name	Qty	Qty uom	Mixing Density lbm/gal	Yield ft <sup>3</sup> /sk	Mix Fluid Gal/sk	Rate bbl/min	Total Mix Fluid Gal/sk	
1	Water Ahead		5.00	bbl	.	.0	.0	.0		
2	Kick Off Plug	CMT - PREMIUM - CLASS G, 94 LB SK (100003685)	50.0	sacks	16.5	1.06	4.27		4.27	
	94 lbm	CMT - PREMIUM - CLASS G REG OR TYPE V, BULK (100003685)								
	3 %	POTASSIUM CHLORIDE 7% (100001585)								
	0.3 %	HR-5, 50 LB SK (100005050)								
	4.272 Gal	FRESH WATER								
3	Displacement			bbl	.			.0		
Calculated Values		Pressures		Volumes						
Displacement	35	Shut In: Instant		Lost Returns		Cement Slurry	10	Pad		
Top Of Cement		5 Min		Cement Returns	0	Actual Displacement		Treatment		
Frac Gradient		15 Min		Spacers	5	Load and Breakdown		Total Job	50	
Rates										
Circulating	2	Mixing	1.5	Displacement	2.0	Avg. Job	1.5			
Cement Left In Pipe	Amount	0 ft	Reason	Shoe Joint						
Frac Ring # 1 @	ID	Frac ring # 2 @	ID	Frac Ring # 3 @	ID	Frac Ring # 4 @	ID			
The Information Stated Herein Is Correct				Customer Representative Signature						

*The Road to Excellence Starts with Safety*

<b>Sold To #:</b> 320986	<b>Ship To #:</b> 2577158	<b>Quote #:</b>	<b>Sales Order #:</b> 5585986
<b>Customer:</b> KINDER MORGAN INC		<b>Customer Rep:</b>	
<b>Well Name:</b> Doe Canyon	<b>Well #:</b> # 5	<b>API/UWI #:</b> 05-033-11111	
<b>Field:</b> PARADOX/ DESERT CREEK	<b>City (SAP):</b> Pleasant View, Colorado	<b>County/Parish:</b> Montezuma	<b>State:</b> Colorado
<b>Legal Description:</b>			
<b>Lat:</b> N 0 deg. OR N 0 deg. 0 min. 0 secs.		<b>Long:</b> E 0 deg. OR E 0 deg. 0 min. 0 secs.	
<b>Contractor:</b> Patterson UTI Drilling Co.		<b>Rig/Platform Name/Num:</b> Patterson UTI 17	
<b>Job Purpose:</b> Plug Service - Whipstock			<b>Ticket Amount:</b>
<b>Well Type:</b> Development Well		<b>Job Type:</b> Plug Service - Whipstock	
<b>Sales Person:</b> SNYDER, RANDALL		<b>Srv Supervisor:</b> SHOATS, HARRY	<b>MBU ID Emp #:</b> 329013

Activity Description	Date/Time	Cht #	Rate bbl/ min	Volume bbl		Pressure psig		Comments
				Stage	Total	Tubing	Casing	
Arrive at Location from Other Job or Site	12/29/2007 12:30							
Assessment Of Location Safety Meeting	12/29/2007 12:45							
Rig-Up Equipment	12/29/2007 13:30							
Start Job	12/29/2007 14:29							
Test Lines	12/29/2007 14:30		0.5	1	1	1500. 0		
Pump Spacer 1	12/29/2007 14:32		1.5	5	6		120.0	5 bbl h2o
Pump Cement	12/29/2007 14:37		1.5	10	16		.0	16.5 # cmt
Pump Displacement	12/29/2007 14:47		2	35	51		.0	2bbl h2o/33 bbl mud
Shutdown	12/29/2007 15:07							well on suck
End Job	12/29/2007 15:09				51			



<b>Field Ticket Number:</b> 5585986		<b>Field Ticket Date:</b> Saturday, December 29, 2007	
<b>Bill To:</b> KINDER MORGAN, INC 17801 HIGHWAY 666 CORTEZ, CO 81321		<b>Job Name:</b> Balanced Plug <b>Order Type:</b> Streamline Order (ZOH) <b>Well Name:</b> Doe Canyon # 5 <b>Company Code:</b> 1100 <b>Customer PO No.:</b> NA <b>Shipping Point:</b> Farmington, NM USA 4109E Main <b>Sales Office:</b> Rocky Mountains BD <b>Well Type:</b> <b>Well Category:</b>	
<b>Ship To:</b> KINDER MORGAN INC Doe Canyon, # 5 2577158 Pleasant View, Colorado,			

Material	Description	QTY	UCR	Base Amt	Unit Amt	Gross Amount	Discount	Net Amount
7529	CMT WHIPSTOCK PLUG BOM	1	JOB	0.00	0.00	0.00		0.00
2	MILEAGE FOR CEMENTING CREW,ZI	250	MI	0.00	5.76	1,440.00	777.60	662.40
	Number of Units	1						
1	ZI-MILEAGE FROM NEAREST HES BASE /UNIT	250	MI	0.00	9.79	2,447.50	1,321.65	1,125.85
	Number of Units	1						
16094	PLUG BACK/SPOT CEMENT OR MUD,ZI	1	EA	0.00	12,584.00	12,584.00	6,795.36	5,788.64
	DEPTH	8600						
	FEET/METERS (FT/M)		FT					
100003685	CLASS G / PREMIUM	50	SK	0.00	40.42	2,021.00	1,091.34	929.66
100005050	HR-5	15	LB	0.00	11.07	166.05	89.67	78.38
100001585	KCL POTASSIUM CHLORIDE	54	LB	0.00	1.29	69.66	37.62	32.04
76400	ZI MILEAGE,CMT MTLS DEL/RET MIN	125	MI	0.00	3.35	1,000.81	540.44	460.37
	NUMBER OF TONS	2.39						
3965	HANDLE&DUMP SVC CHRGR, CMT&ADDITIVES,ZI	52	CF	0.00	5.49	285.48	154.16	131.32
	NUMBER OF EACH	1						
86955	ZI FUEL SURCHG-HEAVY TRKS >1 1/2 TON	250	MI	0.00	0.45	225.00		225.00
	Number of Units	2						
86954	ZI FUEL SURCHG-CARS/PICKUPS<1 1/2TON	250	MI	0.00	0.15	37.50		37.50
	Number of Units	1						
87605	ZI FUEL SURCHG-CMT & CMT ADDITIVES	125	MI	0.00	0.15	44.81		44.81
	NUMBER OF TONS	2.39						
372867	Cmt PSL - DOT Vehicle Charge, CMT	2	EA	0.00	241.00	482.00		482.00

Material	Description	QTY	UOM	Base Amt	Unit Amt	Gross Amount	Discount	Net Amount
7	ENVIRONMENTAL SURCHARGE /JOB,ZI	1	JOB	0.00	134.00	134.00		134.00
8	IRON SAFETY INSPECTION SURCHARGE /JOB ZI	1	JOB	0.00	83.00	83.00		83.00
				<b>Totals</b>	<b>USD</b>	<b>21,020.81</b>	<b>10,807.84</b>	<b>10,212.97</b>

Halliburton Rep:

HARRY SHOATS

Customer Agent:

Halliburton Approval

THIS OUTPUT DOES NOT INCLUDE TAXES. APPLICABLE SALES TAX WILL BE BILLED ON THE FINAL INVOICE.

CUSTOMER HEREBY ACKNOWLEDGES RECEIPT OF THE MATERIALS AND SERVICES DESCRIBED ABOVE AND ON THE ATTACHED DOCUMENTS.

X

Customer Signature

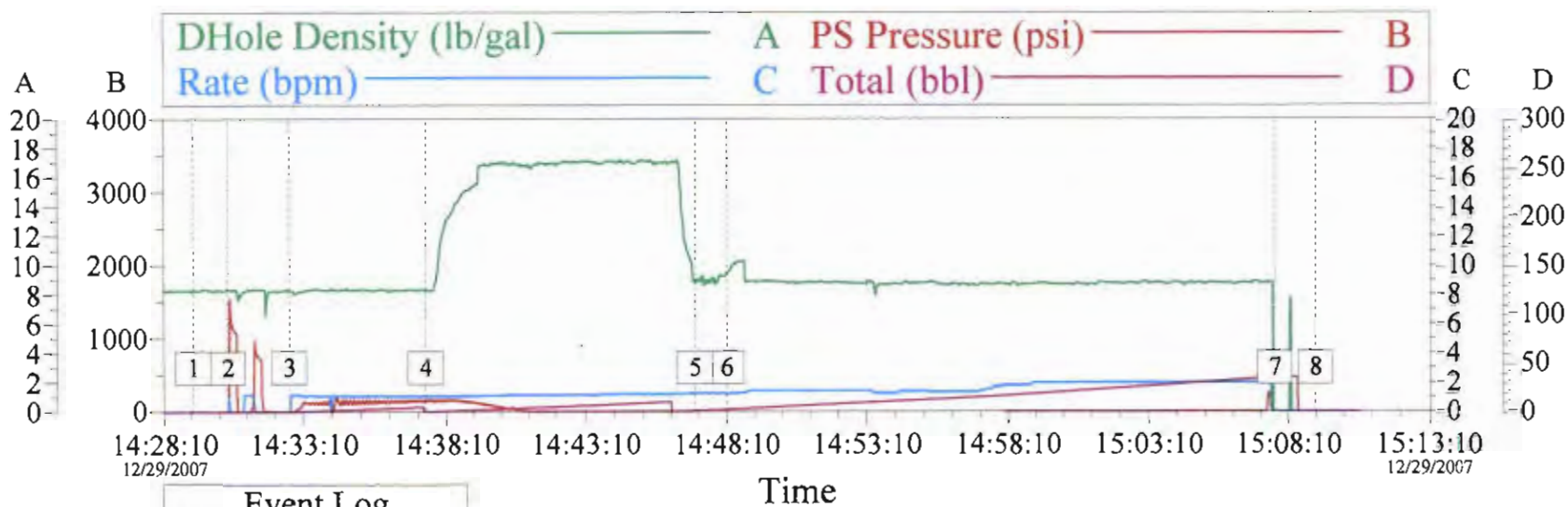
FIELD TICKET TOTAL USD

10,212.97

kinder morgan

whip stock

so# 5585986



### Event Log

1	start job	14:29:13
2	psi tst	14:30:28
3	h2o spacer	14:32:40
4	cmt	14:37:27
5	h2o spacer	14:47:02
6	mud/disp	14:48:10
7	shut down	15:07:40
8	end job	15:09:09

Customer:

Well Desc:

Job Date:

UWI:

Ticket #:

CemWin v1.7.2  
29-Dec-07 15:23

The Road to Excellence Starts with Safety

Sold To #: 320986	Ship To #: 2577158	Quote #:	Sales Order #: 5570792
Customer: KINDER MORGAN INC		Customer Rep: Hale, Jimmy	
Well Name: Doe Canyon	Well #: # 5	API/UWI #: 05-033-11111	
Field: PARADOX/ DESERT CREEK	City (SAP): Pleasant View, Colorado	County/Parish: Montezuma	State: Colorado
Contractor: Patterson UTI Drilling Co.		Rig/Platform Name/Num: Patterson UTI 17	
Job Purpose: Plug Service - Whipstock			
Well Type: Development Well		Job Type: Plug Service - Whipstock	
Sales Person: SNYDER, RANDALL		Srvc Supervisor: PFIEFER, RYAN	MBU ID Emp #: 391069

### Job Personnel

HES Emp Name	Exp Hrs	Emp #	HES Emp Name	Exp Hrs	Emp #	HES Emp Name	Exp Hrs	Emp #
Deaton, Paul	8.3	436811	Johnson, Robert	8.3	396012	PFIEFER, RYAN J	8.3	391069
TYCKSEN, MYRON K	8.3	410501						

### Equipment

HES Unit #	Distance-1 way	HES Unit #	Distance-1 way	HES Unit #	Distance-1 way	HES Unit #	Distance-1 way
10025104	125 mile	10241534	125 mile	10248031C	125 mile	10829447	125 mile

### Job Hours

Date	On Location Hours	Operating Hours	Date	On Location Hours	Operating Hours	Date	On Location Hours	Operating Hours
TOTAL			Total is the sum of each column separately					

### Job

Formation Name	Formation Depth (MD)	Top	Bottom	Form Type	Job depth MD	Job Depth TVD	Water Depth	Perforation Depth (MD)	From	To
				BHST	8600. ft	8600. ft				
							Wk Ht Above Floor			
							3. ft			

### Job Times

Date	Time	Time Zone
20 - Dec - 2007	07:00	MST
20 - Dec - 2007	13:25	MST
20 - Dec - 2007	14:30	MST

### Well Data

Description	New / Used	Max pressure psig	Size in	ID in	Weight lbm/ft	Thread	Grade	Top MD ft	Bottom MD ft	Top TVD ft	Bottom TVD ft
9 5/8" Surface Pipe	Used		9.625	8.921	36.		J-55		2998.		2998.
8 3/4" Open Hole				8.75				2998.	5300.	2998.	5300.
7" Production Casing	Used		7.	6.184	29.		P-110		8510.		8510.
2 3/8 Tubing	Used		2.375	1.995	4.7		P-110		8600.		8600.
4 3/4 Open Hole				4.75				8510.	8600.	8510.	8600.

### Tools and Accessories

Type	Size	Qty	Make	Depth	Type	Size	Qty	Make	Depth	Type	Size	Qty	Make
Guide Shoe					Packer					Top Plug			
Float Shoe					Bridge Plug					Bottom Plug			
Float Collar					Retainer					SSR plug set			
Insert Float										Plug Container			
Stage Tool										Centralizers			

### Miscellaneous Materials

Gelling Agt	Conc	Surfactant	Conc	Acid Type	Qty	Conc	%
Treatment Fld	Conc	Inhibitor	Conc	Sand Type	Size	Qty	



Fluid Data										
Stage/Plug #: 1										
Fluid #	Stage Type	Fluid Name	Qty	Qty uom	Mixing Density lbm/gal	Yield ft <sup>3</sup> /sk	Mix Fluid Gal/sk	Rate bbl/min	Total Mix Fluid Gal/sk	
1	Water Ahead		10.00	bbl	.	.0	.0	.0		
2	Kick Off Plug	CMT - PREMIUM - CLASS G, 94 LB SK (100003685)	25.0	sacks	16.5	1.06	4.24		4.24	
	94 lbm	CMT - PREMIUM - CLASS G REG OR TYPE V, BULK (100003685)								
	3 %	POTASSIUM CHLORIDE - KCL (101163786)								
	0.3 %	HR-5, 50 LB SK (100005050)								
	4.24 Gal	FRESH WATER								
3	Displacement		49.00	bbl	.			.0		
Calculated Values		Pressures		Volumes						
Displacement		Shut In: Instant		Lost Returns		Cement Slurry		Pad		
Top Of Cement		5 Min		Cement Returns		Actual Displacement		Treatment		
Frac Gradient		15 Min		Spacers		Load and Breakdown		Total Job		
Rates										
Circulating		Mixing		Displacement		Avg. Job				
Cement Left In Pipe	Amount	0 ft	Reason	Shoe Joint						
Frac Ring # 1 @	ID	Frac ring # 2 @	ID	Frac Ring # 3 @	ID	Frac Ring # 4 @	ID			
The Information Stated Herein Is Correct				Customer Representative Signature						

## Work Order Contract

Order Number

5570792

Halliburton Energy Services, Inc.  
Houston, Texas 77056

TO: HALLIBURTON ENERGY SERVICES, INC. - YOU ARE HEREBY REQUESTED TO FURNISH EQUIPMENT AND SERVICE PERSONNEL TO DELIVER AND OPERATE THE SAME AS AN INDEPENDENT CONTRACTOR TO CUSTOMER LISTED BELOW AND DELIVER AND SELL PRODUCTS, SUPPLIES AND MATERIALS FOR THE PURPOSE OF SERVICING:

Well No. # 5	Farm or Lease Doe Canyon	County Montezuma	State Colorado	Well Permit Number
Customer KINDER MORGAN INC		Well Owner KINDER MORGAN INC	Job Purpose Plug Service - Whipstock	

THIS WORK ORDER MUST BE SIGNED BEFORE WORK IS COMMENCED

A. CUSTOMER REPRESENTATION - Customer warrants that the well is in proper condition to receive the services, equipment, products, and materials to be supplied by Halliburton Energy Services, Inc. (hereinafter "Halliburton").

B. PRICE AND PAYMENT - The services, equipment, products, and/or materials to be supplied hereunder are priced in accordance with Halliburton's current price list. All prices are exclusive of taxes. If Customer does not have an approved open account with Halliburton, all sums due are payable in cash at the time of performance of services or delivery of equipment, products or materials. If Customer has an approved open account, invoices are payable on the twentieth day after the date of invoice. Customer agrees to pay interest on any unpaid balance from the date payable until paid at the highest lawful contract rate applicable, but never to exceed 18% per annum. In the event Halliburton employs an attorney for collection of any account, Customer agrees to pay attorney fees of 20% of the unpaid account, or Halliburton's actual attorneys fees, whichever is greater, plus all collection and court costs. Customer agrees that the amount of attorney fees set out herein are reasonable and necessary.

C. RELEASE AND INDEMNITY - Customer agrees to RELEASE Halliburton Group from any and all liability for any and all damages whatsoever to property of any kind owned by, in the possession of, or leased by Customer and those persons and entities Customer has the ability to bind by contract or which are co-interest owners or joint ventures with Customer. Customer also agrees to DEFEND, INDEMNIFY, AND HOLD Halliburton Group HARMLESS from and against any and all liability, claims, costs, expenses, attorney fees and damages whatsoever for personal injury, illness, death, property damage and loss resulting from:

loss of well control, services to control a wild well whether underground or above the surface, reservoir or underground damage, including loss of oil, gas, other mineral substances or water, surface damage arising from underground damage, damage to or loss of the well bore, subsurface trespass or any action in the nature thereof, fire, explosion, subsurface seepage, radioactivity, and pollution and contamination and its cleanup and control.

CUSTOMER'S RELEASE, DEFENSE, INDEMNITY AND HOLD HARMLESS obligations will apply even if the liability and claims are caused by the sole, concurrent, active or passive negligence, fault, or strict liability of one or more members of the Halliburton Group, the unreasonableness of any vessel or any defect in the data, products, supplies, materials or equipment furnished by any member or members of the Halliburton Group whether in the design, manufacture, maintenance or marketing thereof or from a failure to warn of such defect. "Halliburton Group" is defined as Halliburton Energy Services, Inc., its parent, subsidiary, and affiliated companies, issuers and subcontractors and all its/their officers, directors, employees, consultants and agents. Customer's RELEASE, DEFENSE, INDEMNITY AND HOLD HARMLESS obligations apply whether the personal injury, illness, death, property damage or loss is suffered by one or more members of the Halliburton Group, Customer, or any other person or entity. Customer agrees to support such obligations assumed herein with liability insurance with limits of not less than \$500,000. Customer agrees to name Halliburton Group as named additional insured on all of its general liability policy(s). Customer agrees that its liability under this Contract is not limited by the amounts of its insurance coverage, except where and as may be required by applicable local law for the provisions of this Contract to be enforceable.

D. EQUIPMENT LIABILITY - Customer shall at its risk and expense attempt to recover any Halliburton Group equipment lost or lodged in the well. If the equipment is recovered and repairable, Customer shall pay the repair costs, unless caused by Halliburton's sole negligence. If the equipment is not recovered or is irreparable, Customer shall pay the replacement cost, unless caused by Halliburton's sole negligence. If a radioactive source becomes lost or lodged in the well, Customer shall meet all requirements of Section 39.15(e) of the Nuclear Regulatory Commission regulations and any other applicable laws or regulations concerning retrieval or abandonment and shall permit Halliburton to monitor the recovery or abandonment efforts all at no risk or liability to Halliburton Group. Customer shall be responsible for damage to or loss of Halliburton group equipment, products, and materials while in transit aboard Customer-supplied transportation, even if such is arranged by Halliburton at Customer's request, and during loading and unloading from such transport. Customer will also pay for the repair or replacement of Halliburton group equipment damaged by corrosion or abrasion due to well effluents.

E. LIMITED WARRANTY - Halliburton warrants only title to the equipment, products, and materials supplied under this Contract and that same are free from defects in workmanship and materials for thirty (30) days from the date of delivery. THERE ARE NO WARRANTIES, EXPRESS OR IMPLIED, OF MERCHANTABILITY, FITNESS OR OTHERWISE BEYOND THOSE STATED IN THE IMMEDIATELY PRECEDING SENTENCE. Halliburton's sole liability and Customer's exclusive remedy in any cause of action (whether in contract, tort, breach of warranty or otherwise) arising out of the sale, lease or use of any equipment, products, or materials is expressly limited to the replacement of such on their return to Halliburton or, at Halliburton's option, to the allowance to Customer of credit for the cost of such items. In no event shall Halliburton be liable for special, incidental, indirect, consequential, or punitive damages. Because of the uncertainty of variable well conditions and the necessity of relying on facts and supporting services furnished by others, HALLIBURTON IS UNABLE TO GUARANTEE THE EFFECTIVENESS OF THE EQUIPMENT, MATERIALS, OR SERVICE, NOR THE ACCURACY OF ANY CHART INTERPRETATION, RESEARCH ANALYSIS, JOB RECOMMENDATION OR OTHER DATA FURNISHED BY HALLIBURTON GROUP. Halliburton personnel will use their best efforts in gathering such information and their best judgment in interpreting it, but Customer agrees that Halliburton Group shall not be liable for and CUSTOMER SHALL INDEMNIFY HALLIBURTON GROUP AGAINST ANY DAMAGES ARISING FROM THE USE OF SUCH INFORMATION, even if such is contributed to or caused by the active or passive negligence, fault or strict liability of any member or members of Halliburton Group. Halliburton also does not warrant the accuracy of data transmitted by electronic process, and Halliburton will not be responsible for accidental or intentional interception of such data by third parties.

F. GOVERNING LAW - The validity, interpretation and construction of this Contract shall be determined by the laws of the jurisdiction where the services are performed or the equipment or materials are delivered.

G. DISPUTE RESOLUTION Customer and Halliburton agree that any dispute that may arise out of the performance of this Contract shall be resolved by binding arbitration by a panel of three arbitrators under the rules of the American Arbitration Association. The arbitration will take place in Houston, TX.

H. SEVERABILITY - If any provision or part thereof of this Contract shall be held to be invalid, void, or of no effect for any reason, such holding shall not be deemed to affect the validity of the remaining provisions of this Contract which can be given effect, without the invalid provision or part thereof, and to this end, the provisions of this Contract are declared to be severable. Customer and Halliburton agree that any provision of this Contract that is unenforceable or void under applicable law will be modified to achieve the intent of the parties hereunder to the greatest extent allowed by applicable law.

I. MODIFICATIONS - Customer agrees that Halliburton shall not be bound by any modifications to this Contract, except where such modification is made in writing by a duly authorized executive officer of Halliburton. Requests for modifications should be directed to the Vice President - Legal, 10200 Bellaire Blvd., Houston, TX. 77072-5299.

I HAVE READ AND UNDERSTAND THIS WORK ORDER CONTRACT WHICH CONTAINS RELEASE AND INDEMNITY LANGUAGE WHICH CUSTOMER ACKNOWLEDGES

IS CONSPICUOUS AND AFFORDS FAIR AND ADEQUATE NOTICE AND I REPRESENT THAT I AM AUTHORIZED TO SIGN THE SAME AS CUSTOMER'S AGENT. AM SIGNING THIS WORK ORDER CONTRACT WITH THE UNDERSTANDING THAT ITS TERMS AND CONDITIONS WILL NOT APPLY TO THE EXTENT THEY CONFLICT WITH TERMS AND CONDITIONS OF A SIGNED MASTER SERVICE CONTRACT BETWEEN THE PARTIES.

SIGNED:

CUSTOMER Authorized Signatory

DATE:

TIME:

A.M./P.M.

## Field Ticket

<b>Field Ticket Number:</b> 5570792		<b>Field Ticket Date:</b> Thursday, December 20, 2007	
<b>Bill To:</b> KINDER MORGAN, INC 17801 HIGHWAY 666 CORTEZ, CO 81321		<b>Job Name:</b> Whipstock Plug <b>Order Type:</b> Streamline Order (ZOH) <b>Well Name:</b> Doe Canyon # 5 <b>Company Code:</b> 1100 <b>Customer PO No.:</b> NA <b>Shipping Point:</b> Farmington, NM USA 4109E Main <b>Sales Office:</b> Rocky Mountains BD <b>Well Type:</b> <b>Well Category:</b>	
<b>Ship To:</b> KINDER MORGAN INC Doe Canyon, # 5 2577158 Pleasant View, Colorado,			

Material	Description	QTY	UOM	Base Amt	Unit Amt	Gross Amount	Discount	Net Amount
7529	CMT WHIPSTOCK PLUG BOM	1	JOB	0.00	0.00	0.00	54%	0.00
2	MILEAGE FOR CEMENTING CREW,ZI	250	MI	0.00	5.76	1,440.00	54%	662.40
	Number of Units	1						
1	ZI-MILEAGE FROM NEAREST HES BASE,/UNIT	250	MI	0.00	9.79	2,447.50	54%	1,125.85
	Number of Units	1						
16094	PLUG BACK/SPOT CEMENT OR MUD,ZI	1	EA	0.00	12,584.00	12,584.00	54%	5,788.64
	DEPTH	8600						
	FEET/METERS (FT/M)		FT					
100003685	CLASS G / PREMIUM	50	SK	0.00	40.42	2,021.00	54%	929.86
100001585	KCL POTASSIUM CHLORIDE	50	LB	0.00	1.29	64.50	54%	29.67
100005050	HR-5	14	LB	0.00	11.07	154.98	54%	71.29
78400	ZI MILEAGE,CMT MTLs DEL/RET MIN	125	MI	0.00	3.35	1,000.81	54%	460.37
	NUMBER OF TONS	2.39						
3965	HANDLE&DUMP SVC CHRg, CMT&ADDITIVES,ZI	52	CF	0.00	5.49	285.48	54%	131.32
	NUMBER OF EACH	1						
86955	ZI FUEL SURCHG-HEAVY TRKS >1 1/2 TON	250	MI	0.00	0.45	225.00		225.00
	Number of Units	2						
86954	ZI FUEL SURCHG-CARS/PICKUPS<1 1/2TON	250	MI	0.00	0.15	37.50		37.50
	Number of Units	1						
87605	ZI FUEL SURCHG-CMT & CMT ADDITIVES	125	MI	0.00	0.15	44.81		44.81
	NUMBER OF TONS	2.39						
372867	Cmt PSL - DOT Vehicle Charge, CMT	2	EA	0.00	241.00	482.00		482.00

Material	Description	QTY	UOM	Base Amt	Unit Amt	Gross Amount	Discount	Net Amount
7	ENVIRONMENTAL SURCHARGE,/JOB,ZI	1	JOB	0.00	134.00	134.00		134.00
8	IRON SAFETY INSPECTION SURCHARGE /JOB Z	1	JOB	0.00	83.00	83.00		83.00
18092	ADDITIONAL HOURS (PUMPING EQUIPMENT), ZI	1	EA	0.00	956.00	3,824.00	54%	1,758.04
	HOURS	4						
<b>Totals</b>				<b>USD</b>		<b>24,828.58</b>	<b>12,864.03</b>	<b>11,964.55</b>

Halliburton Rep:

RYAN PFIEFER

Customer Agent:

Jimmy Hale

Halliburton Approval

THIS OUTPUT DOES NOT INCLUDE TAXES. APPLICABLE SALES TAX WILL BE BILLED ON THE FINAL INVOICE.  
CUSTOMER HEREBY ACKNOWLEDGES RECEIPT OF THE MATERIALS AND SERVICES DESCRIBED ABOVE AND ON THE ATTACHED DOCUMENTS.

X

Customer Signature

FIELD TICKET TOTAL USD

11,964.55

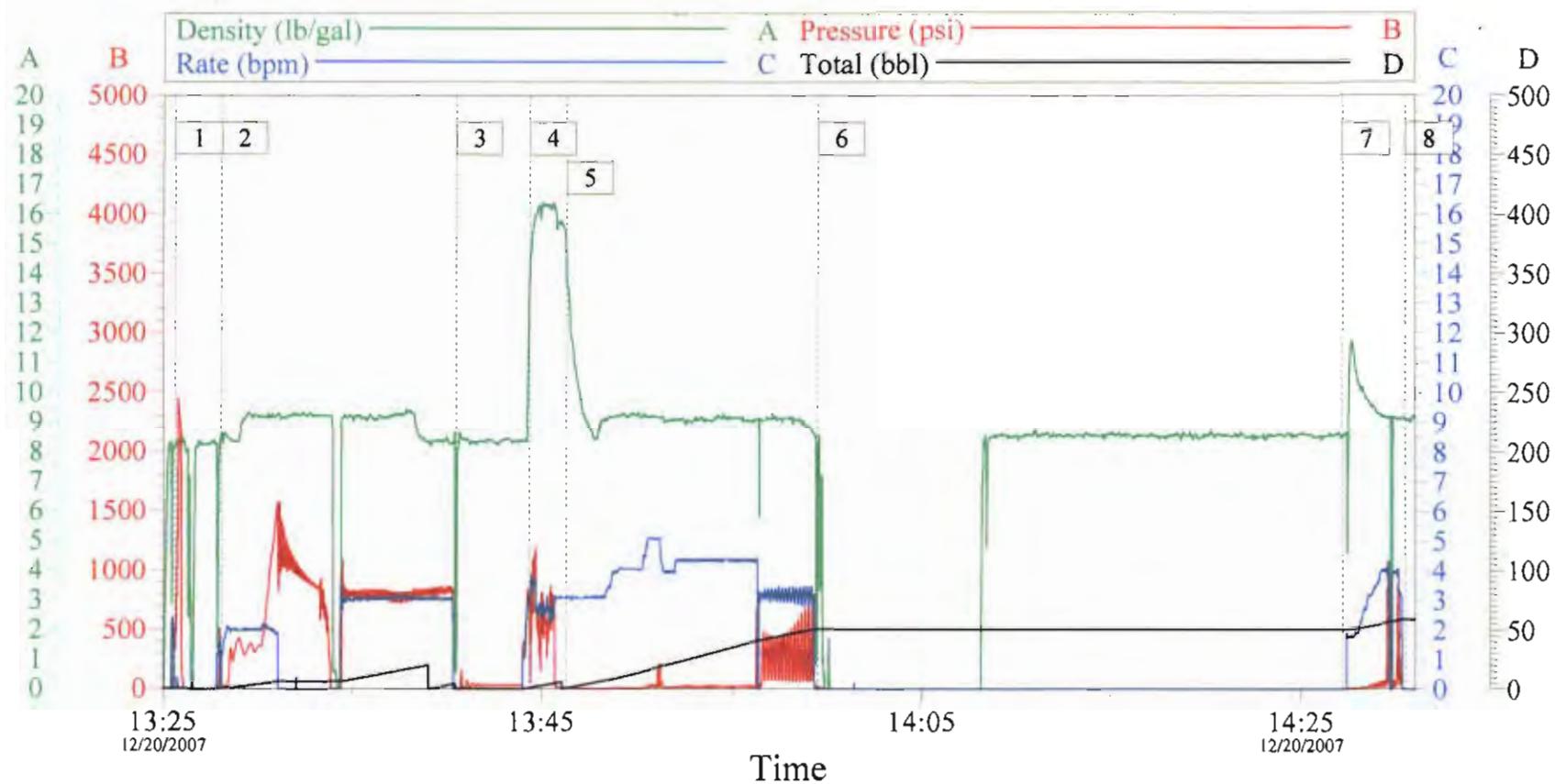


*The Road to Excellence Starts with Safety*

Sold To #: 320986		Ship To #: 2577158		Quote #:		Sales Order #: 5570792	
Customer: KINDER MORGAN INC				Customer Rep: Hale, Jimmy			
Well Name: Doe Canyon			Well #: # 5		API/UWI #: 05-033-11111		
Field: PARADOX/ DESERT CREEK		City (SAP): Pleasant View, Colorado		County/Parish: Montezuma		State: Colorado	
Legal Description:							
Lat: N 0 deg. OR N 0 deg. 0 min. 0 secs.				Long: E 0 deg. OR E 0 deg. 0 min. 0 secs.			
Contractor: Patterson UTI Drilling Co.			Rig/Platform Name/Num: Patterson UTI 17				
Job Purpose: Plug Service - Whipstock						Ticket Amount:	
Well Type: Development Well			Job Type: Plug Service - Whipstock				
Sales Person: SNYDER, RANDALL			Srvc Supervisor: PFIEFER, RYAN			MBU ID Emp #: 391069	

Activity Description	Date/Time	Cht #	Rate bbl/ min	Volume bbl		Pressure psig		Comments
				Stage	Total	Tubing	Casing	
Pre-Convoy Safety Meeting	12/20/2007 04:00							
Arrive At Loc	12/20/2007 07:15							
Pre-Rig Up Safety Meeting	12/20/2007 07:30							
Rig-Up Equipment	12/20/2007 07:35							
Wait on Customer or Customer Sub-Contractor Equip	12/20/2007 07:40							Wait on phone call from customer to see if he is wanting to run a tool.
Safety Meeting - Pre Job	12/20/2007 10:00							
Wait on Customer or Customer Sub-Contractor Equip	12/20/2007 10:20							trying to circulate last joint down fiberglass tubing is hanging up. Wait on customer to make decision.
Pressure Test	12/20/2007 13:25						2500. 0	
Pump Spacer	12/20/2007 13:28		2	20			400.0	20bbls 9.1#mud
Other	12/20/2007 13:40							Shut down to mix cement
Pump Cement	12/20/2007 13:44		3	4.5			1000. 0	pump 4.5 bbls of 16.5# cement
Pump Displacement	12/20/2007 13:46		3	47			500.0	47bbls of 9.1 mud
Other	12/20/2007 13:59							pull 10 stands
Load Casing	12/20/2007 14:27		2				500.0	Tried to pressure up to 500psi but wouldn't hold psi

Activity Description	Date/Time	Cht #	Rate bbl/ min	Volume bbl		Pressure psig		Comments
				Stage	Total	Tubing	Casing	
End Job	12/20/2007 14:30							



Event Log			
Intersection	PP	Intersection	PP
1 Pressure Test	13:25:37 333.8	2 Pump Spacer	13:28:03 10.21
3 Shut down and mix cement	13:40:27 -6.730	4 Pump Cement	13:44:22 750.7
5 Pump Displacement	13:46:20 5.894	6 Pull 10 Stands	13:59:34 20.63
7 Load Hole	14:27:13 -5.769	8 End Job	14:30:29 -0.961

---

# KINDER MORGAN INC

---

**Doe Canyon #5**

**Dolores County , Colorado**

**Plug Service - Whipstock**

**17-Oct-2007**

**Job Site Documents**



*The Road to Excellence Starts with Safety*

Sold To #: 320986	Ship To #: 2577158	Quote #:	Sales Order #: 5428808
Customer: KINDER MORGAN INC		Customer Rep: Stittler, Larry	
Well Name: Doe Canyon		Well #: #5	API/UWI #:
Field:	City (SAP): UNKNOWN	County/Parish: Dolores	State: Colorado
Contractor: N/A		Rig/Platform Name/Num: ?	
Job Purpose: Plug Service - Whipstock			
Well Type: Development Well		Job Type: Plug Service - Whipstock	
Sales Person: SNYDER, RANDALL		Srv Supervisor: BLAKE, MICHAEL	MBU ID Emp #: 305760

### Job Personnel

HES Emp Name	Exp Hrs	Emp #	HES Emp Name	Exp Hrs	Emp #	HES Emp Name	Exp Hrs	Emp #
BLAKE, MICHAEL James		305760	BLAKE, MICHAEL James	0.0	305760	FLORES, DANIEL	0.0	352619
TERRY, PAUL Andrew	0.0	410248						

### Equipment

HES Unit #	Distance-1 way	HES Unit #	Distance-1 way	HES Unit #	Distance-1 way	HES Unit #	Distance-1 way
10547382	125 mile	10759930C	125 mile	53301	125 mile		

### Job Hours

Date	On Location Hours	Operating Hours	Date	On Location Hours	Operating Hours	Date	On Location Hours	Operating Hours
	18	18						

TOTAL Total is the sum of each column separately

### Job

### Job Times

Formation Name					Date	Time	Time Zone
Formation Depth (MD)	Top		Bottom		Called Out	16 - Oct - 2007 03:30	MST
Form Type		BHST			On Location	16 - Oct - 2007 08:00	MST
Job depth MD	8550. ft	Job Depth TVD	8550. ft		Job Started	17 - Oct - 2007 14:23	MST
Water Depth		Wk Ht Above Floor	3. ft		Job Completed	17 - Oct - 2007 14:56	MST
Perforation Depth (MD)	From		To		Departed Loc	17 - Oct - 2007 16:00	MST

### Well Data

Description	New / Used	Max pressure psig	Size in	ID in	Weight lbm/ft	Thread	Grade	Top MD ft	Bottom MD ft	Top TVD ft	Bottom TVD Ft
-------------	------------	-------------------	---------	-------	---------------	--------	-------	-----------	--------------	------------	---------------

### Tools and Accessories

Type	Size	Qty	Make	Depth	Type	Size	Qty	Make	Depth	Type	Size	Qty	Make
Guide Shoe					Packer					Top Plug			
Float Shoe					Bridge Plug					Bottom Plug			
Float Collar					Retainer					SSR plug set			
Insert Float										Plug Container			
Stage Tool										Centralizers			

### Miscellaneous Materials

Gelling Agt		Conc		Surfactant		Conc		Acid Type		Qty		Conc %
Treatment Fld		Conc		Inhibitor		Conc		Sand Type		Size		Qty

### Fluid Data

Stage/Plug #: 1												
Fluid #	Stage Type	Fluid Name			Qty	Qty uom	Mixing Density lbm/gal	Yield ft3/sk	Mix Fluid Gal/sk	Rate bbl/min	Total Mix Fluid Gal/sk	

Stage/Plug #: 1									
Fluid #	Stage Type	Fluid Name	Qty	Qty uom	Mixing Density lbm/gal	Yield ft <sup>3</sup> /sk	Mix Fluid Gal/sk	Rate bbl/min	Total Mix Fluid Gal/sk
1	Water Ahead		10	bbl	.	.0	.0		
2	Kick Off Plug	CMT - PREMIUM - CLASS G, 94 LB SK (100003685)	25	sacks	16.5	1.06	4.25		4.25
	94 lbm	CMT - PREMIUM - CLASS G REG OR TYPE V, BULK (100003685)							
	3 %	POTASSIUM CHLORIDE - KCL (101163786)							
	0.2 %	HR-5, 50 LB SK (100005050)							
	4.245 Gal	FRESH WATER							
3	Displacement		37.75	bbl	.			.0	
Calculated Values		Pressures		Volumes					
Displacement	37.75	Shut In: Instant		Lost Returns		Cement Slurry	5	Pad	
Top Of Cement	8440	5 Min		Cement Returns		Actual Displacement	37.75	Treatment	20
Frac Gradient		15 Min		Spacers		Load and Breakdown		Total Job	57.75
Rates									
Circulating	5	Mixing	4	Displacement	4	Avg. Job	4		
Cement Left In Pipe	Amount	112 ft	Reason	To balance the plug					
Frac Ring # 1 @	ID	Frac ring # 2 @	ID	Frac Ring # 3 @	ID	Frac Ring # 4 @	ID		
The Information Stated Herein Is Correct				Customer Representative Signature					

*The Road to Excellence Starts with Safety*

<b>Sold To #:</b> 320986	<b>Ship To #:</b> 2577158	<b>Quote #:</b>	<b>Sales Order #:</b> 5428808
<b>Customer:</b> KINDER MORGAN INC		<b>Customer Rep:</b> Stittler, Larry	
<b>Well Name:</b> Doe Canyon		<b>Well #:</b> #5	<b>API/UWI #:</b>
<b>Field:</b>	<b>City (SAP):</b> UNKNOWN	<b>County/Parish:</b> Dolores	<b>State:</b> Colorado
<b>Legal Description:</b>			
<b>Lat:</b> N 0 deg. OR N 0 deg. 0 min. 0 secs.		<b>Long:</b> E 0 deg. OR E 0 deg. 0 min. 0 secs.	
<b>Contractor:</b> N/A		<b>Rig/Platform Name/Num:</b> ?	
<b>Job Purpose:</b> Plug Service - Whipstock		<b>Ticket Amount:</b>	
<b>Well Type:</b> Development Well		<b>Job Type:</b> Plug Service - Whipstock	
<b>Sales Person:</b> SNYDER, RANDALL		<b>Srvc Supervisor:</b> BLAKE, MICHAEL	<b>MBU ID Emp #:</b> 305760

Activity Description	Date/Time	Cht #	Rate bbl/ min	Volume bbl		Pressure psig		Comments
				Stage	Total	Tubing	Casing	
Arrive at Location from Service Center	10/16/2007 08:00							
Safety Meeting - Assessment of Location	10/16/2007 08:15							
Return to Service Center from Job	10/16/2007 18:00							DUE TO WIRELINE TROUBLES CUSTOMER RELEASED US FROM LOC.
Arrive at Location from Service Center	10/17/2007 08:00							RETURNED TO LOC. BY CUSTOMERS REQUEST
Safety Meeting - Assessment of Location	10/17/2007 08:21							
Safety Huddle	10/17/2007 13:50							
Start Job	10/17/2007 14:23							
Test Lines	10/17/2007 14:24		0.5	0.5		2200.0		
Pump Water Spaer	10/17/2007 14:29		5	10		1200.0		
Pump Cement @ 16.5 lb	10/17/2007 14:32		5	5		980.0		
Pump Displacement	10/17/2007 14:34		5	38		1150.0		
Shutdown	10/17/2007 14:44							TRIP OUT 4 STANDS OF DRILL PIPE THEN PUMP WATER
Pump Water Spacer	10/17/2007 14:53		3	5		865.0		
Shutdown	10/17/2007 14:55							
End Job	10/17/2007 14:56							COULDN'T RECORD GRAPH

## Field Ticket

<b>Field Ticket Number:</b> 5428808	<b>Field Ticket Date:</b> Wednesday, October 17, 2007
<b>Bill To:</b> KINDER MORGAN, INC 17801 HIGHWAY 666 CORTEZ, CO 81321	<b>Job Name:</b> Whipstock Plug <b>Order Type:</b> Streamline Order (ZOH) <b>Well Name:</b> Doe Canyon #5 <b>Company Code:</b> 1100 <b>Customer PO No.:</b> NA <b>Shipping Point:</b> Farmington, NM USA 4109E Main <b>Sales Office:</b> Rocky Mountains BD <b>Well Type:</b> Oil <b>Well Category:</b> Development
<b>Ship To:</b> KINDER MORGAN INC Doe Canyon, #5 2577158 UNKNOWN, CO	

Material	Description	QTY	UOM	Base Amt	Unit Amt	Gross Amount	Discount	Net Amount
7529	CMT WHIPSTOCK PLUG BOM	1	JOB	0.00	0.00	0.00		0.00
18094	PLUG BACK/SPOT CEMENT OR MUD,ZI DEPTH FEET/METERS (FT/M)	1 8546	EA FT	0.00	12,584.00	12,584.00	6,795.36	5,788.64
100003685	CLASS G / PREMIUM	25	SK	0.00	40.42	1,010.50	1,010.50	0.00
100005050	HR-5	5	LB	0.00	11.07	55.35	55.35	0.00
101163786	KCL-POTASSIUM CHLORIDE	27	LB	0.00	0.70	18.90		16.90
3965	HANDLE&DUMP SVC CHRГ, CMT&ADDITIVES,ZI NUMBER OF EACH	26 1	CF	0.00	5.49	142.74	77.08	65.66
132	PORT. DAS W/CEMWIN;ACQUIRE W/HES, ZI NUMBER OF DAYS	1 1	JOB	0.00	1,649.00	1,849.00	890.46	758.54
7	ENVIRONMENTAL SURCHARGE,/JOB,ZI	1	JOB	0.00	134.00	134.00		134.00
8	IRON SAFETY INSPECTION SURCHARGE /JOB Z	1	JOB	0.00	83.00	83.00		83.00
86955	ZI FUEL SURCHG-HEAVY TRKS >1 1/2 TON Number of Units	250 2	MI	0.00	0.45	225.00		225.00
86954	ZI FUEL SURCHG-CARS/PICKUPS<1 1/2TON Number of Units	250 1	MI	0.00	0.15	37.50		37.50
87805	ZI FUEL SURCHG-CMT & CMT ADDITIVES NUMBER OF TONS	125 10.81	MI	0.00	0.15	202.69		202.89
372867	Cmt PSL - DOT Vehicle Charge, CMT	2	EA	0.00	241.00	482.00		482.00
2	MILEAGE FOR CEMENTING CREW,ZI	250	MI	0.00	5.76	1,440.00	777.60	662.40



Material	Description	QTY	UOM	Base Amt	Unit Amt	Gross Amount	Discount	Net Amount
	Number of Units	1						
1	ZI-MILEAGE FROM NEAREST HES BASE./UNIT	250	MI	0.00	9.79	4,895.00	2,643.30	2,251.70
	Number of Units	2						
76400	ZI MILEAGE,CMT MTLS DEL/RET MIN	125	MI	0.00	3.35	502.50	271.35	231.15
	NUMBER OF TONS	1.2						
16092	ADDITIONAL HOURS (PUMPING EQUIPMENT), ZI	14	EA	956.00	0.00	13,384.00	7,227.36	6,156.64
	HOURS	0						
				<b>Totals</b>	<b>USD</b>	<b>36,846.18</b>	<b>19,748.36</b>	<b>17,097.82</b>

Halliburton Rep:

MICHAEL BLAKE

Customer Agent:

Larry Stittler

Halliburton Approval

THIS OUTPUT DOES NOT INCLUDE TAXES. APPLICABLE SALES TAX WILL BE BILLED ON THE FINAL INVOICE.  
CUSTOMER HEREBY ACKNOWLEDGES RECEIPT OF THE MATERIALS AND SERVICES DESCRIBED ABOVE AND ON THE ATTACHED DOCUMENTS.

X

Customer Signature

FIELD TICKET TOTAL USD

17,097.82

Customer: KINDER MORGAN-CORTEZ Well Name / No.: Doe Canyon # 5**Daily Cost Sheet**

Item No.	Description	Serial No.	Status	Cost
2	Lackey Wesley	Supervisor	X	\$1,090.00
30	2 7/8 AOH X 2 7/8 EUE	37418	X	\$16.00
Supervisor Costs				\$1,090.00
Equipment Usage Charge				\$16.00
LIH/DBR Charge				\$0.00
Mileage Charge				\$0.00
Other Charges				\$0.00
Total for 10/17/2007				\$1,106.00
Cumulative Total				\$143,632.85

**Job Resume**

8543

Date	Time From	Time To	Comments
10/17/2007	7:45 AM	8:00 AM	Travel to Basic 1541
10/17/2007	8:00 AM	10:30 AM	Wait on Wire Line
10/17/2007	10:30 AM	1:30 PM	R/U Wireline , Log well , R/D Wire Line
10/17/2007	1:30 PM	3:00 PM	R/U Halliburton Cement , Safety Meeting Test , Pump Cement , Pull 254' Or 4 Stands of Drill Pipe , Flush Drill Pipe , R/D Cementers
10/17/2007	3:00 PM	5:45 PM	TOOH 117 Stands
10/17/2007	5:45 PM	6:00 PM	Secure Well For Night
10/17/2007	6:00 PM	6:15 PM	Travel to Patterson # 747

Job Start Date: 9/19/2007

Job Number: 2X - 25219

Customer Work  
Order Number:

---

# **KINDER MORGAN INC**

---

**Doe Canyon # 5  
PARADOX/ DESERT CREEK  
Montezuma County , Colorado**

## **Plug Service - Whipstock**

**18-Sep-2007**

### **Job Site Documents**

TO:	<b>DOBBS, GARY</b>
FROM:	<b>STROMBERG, STEVEN</b>
REQUESTED ON LOCATION:	<b>17-Sep-2007 07:00 MST</b>
CUSTOMER:	<b>KINDER MORGAN INC</b>
WELL NAME/NBR/LEASE:	<b>Doe Canyon , # 5 / Doe Canyon</b>

**TABLE OF CONTENTS:**

Job Site Documents  
Job Summary  
Work Order Contract  
Job Log  
EJCS Survey Cementing

**MBU LEADER:** BE SURE THAT YOU HAVE RECEIVED EACH OF THE DOCUMENTS LISTED ABOVE. IF NOT, CONTACT CENTRAL DISPATCH IMMEDIATELY.



Sold To #: 320986	Ship To #: 2577158	Quote #:	Sales Order #: 5365083										
Customer: KINDER MORGAN INC		Customer Rep: Spittler, Larry											
Well Name: Doe Canyon		Well #: # 5	API/UWI #: 05-033-11111										
Field: PARADOX/ DESERT CREEK	City (SAP): Pleasant View, Colorado	County/Parish: Montezuma	State: Colorado										
Contractor: Patterson UTI Drilling Co.		Rig/Platform Name/Num: Patterson UTI 747											
Job Purpose: Plug Service - Whipstock													
Well Type: Development Well		Job Type: Plug Service - Whipstock											
Sales Person: SNYDER, RANDALL		Srvc Supervisor: DOBBS, GARY	MBU ID Emp #: 122012										
Job Personnel													
HES Emp Name	Exp Hrs	Emp #	HES Emp Name	Exp Hrs	Emp #	HES Emp Name	Exp Hrs	Emp #					
BRUEGGEMAN, ERIC S	7	393018	DOBBS, GARY D	7	122012	LEACHMAN, RICHARD Dwain	7	415693					
Equipment													
HES Unit #	Distance-1 way	HES Unit #	Distance-1 way	HES Unit #	Distance-1 way	HES Unit #	Distance-1 way						
10025024	125 mile	10248031C	125 mile	10741115	125 mile								
Job Hours													
Date	On Location Hours	Operating Hours	Date	On Location Hours	Operating Hours	Date	On Location Hours	Operating Hours					
9-17-07	7	0	9-18-07	7	3								
TOTAL						Total is the sum of each column separately							
Job				Job Times									
Formation Name				Date				Time	Time Zone				
Formation Depth (MD) Top Bottom				Called Out				17 - Sep - 2007	02:00	MST			
Form Type BHST				On Location				17 - Sep - 2007	07:00	MST			
Job depth MD 9265. ft Job Depth TVD 9265. ft				Job Started				18 - Sep - 2007	12:46	MST			
Water Depth Wk Ht Above Floor 2. ft				Job Completed				18 - Sep - 2007	13:59	MST			
Perforation Depth (MD) From To				Departed Loc				18 - Sep - 2007	15:30	MST			
Well Data													
Description	New / Used	Max pressure psig	Size in	ID in	Weight lbm/ft	Thread	Grade	Top MD ft	Bottom MD ft	Top TVD ft	Bottom TVD ft		
7" Production Casing	Used		7.	6.184	29.		P-110	7000.	8500.	7000.	8500.		
7" Production Casing	Used		7.	6.094	32.		P-110		7000.		7000.		
6" Open Hole				6.				8500.	9300.	8500.	9300.		
3 1/2" Drill Pipe	Used		3.5	2.764	13.3		N-80		8400.		8400.		
Tools and Accessories													
Type	Size	Qty	Make	Depth	Type	Size	Qty	Make	Depth	Type	Size	Qty	Make
Guide Shoe					Packer					Top Plug			
Float Shoe					Bridge Plug					Bottom Plug			
Float Collar					Retainer					SSR plug set			
Insert Float										Plug Container			
Stage Tool										Centralizers			
Miscellaneous Materials													
Gelling Agt			Conc		Surfactant			Conc		Acid Type		Qty	Conc %
Treatment Fld			Conc		Inhibitor			Conc		Sand Type		Size	Qty

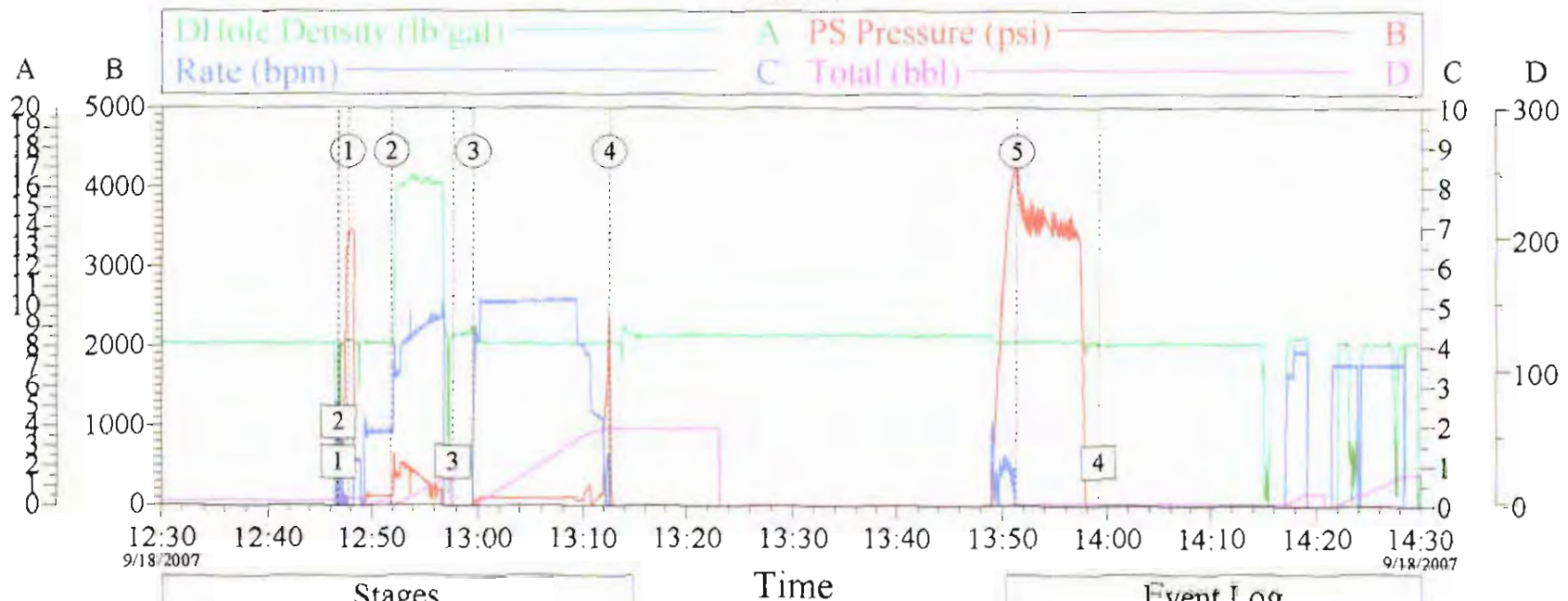
Fluid Data									
Stage/Plug #: 1									
Fluid #	Stage Type	Fluid Name	Qty	Qty uom	Mixing Density lbm/gal	Yield ft <sup>3</sup> /sk	Mix Fluid Gal/sk	Rate bbl/min	Total Mix Fluid Gal/sk
1	Water Ahead		10.00	bbl	.	.0	.0	.0	
2	Kick Off Plug	CMT - PREMIUM - CLASS G, 94 LB SK (100003685)	100.0	sacks	16.5	1.06	4.24		4.24
	94 lbm	CMT - PREMIUM - CLASS G REG OR TYPE V, BULK (100003685)							
	3 %	POTASSIUM CHLORIDE - KCL (101163786)							
	0.3 %	HR-5, 50 LB SK (100005050)							
	4.24 Gal	FRESH WATER							
3	Displacement		63.00	bbl	.			.0	
Calculated Values		Pressures		Volumes					
Displacement	63.3	Shut In: Instant		Lost Returns		Cement Slurry	19	Pad	
Top Of Cement	8034	5 Min		Cement Returns		Actual Displacement	63.3	Treatment	
Frac Gradient		15 Min		Spacers		Load and Breakdown		Total Job	
Rates									
Circulating	3	Mixing	3	Displacement	4	Avg. Job	3		
Cement Left In Pipe	Amount	0 ft	Reason	Shoe Joint					
Frac Ring # 1 @	ID	Frac ring # 2 @	ID	Frac Ring # 3 @	ID	Frac Ring # 4 @	ID		
The Information Stated Herein Is Correct				Customer Representative Signature					



# KINDER MORGAN

## KICK OFF PLUG

5365083



Stages			
Intersection			PP
①	Pump Spacer 1	12:47:39	3346
②	Pump Cement	12:51:52	125.4
③	Pump Displacement	12:59:33	-4.696
④	Bump plug	13:12:28	2228
⑤	Circulate Well	13:51:16	4362

Event Log			
Intersection			PP
①	Start Job	12:46:41	-4.696
②	Test Lines	12:46:44	-4.696
③	Drop Top Plug	12:57:42	-5.675
④	End Job	13:59:06	-6.653

Customer:  
Well Desc:

Job Date:  
Job Type:

Ticket #:

CemWin v1.7.2  
18-Sep-07 15:11

## Work Order Contract

Order Number

53650R3

Halliburton Energy Services, Inc.  
Houston, Texas 77056

TO: HALLIBURTON ENERGY SERVICES, INC. - YOU ARE HEREBY REQUESTED TO FURNISH EQUIPMENT AND SERVICE PERSONNEL TO DELIVER AND OPERATE THE SAME AS AN INDEPENDENT CONTRACTOR TO CUSTOMER LISTED BELOW AND DELIVER AND SELL PRODUCTS, SUPPLIES AND MATERIALS FOR THE PURPOSE OF SERVICING:

Well No. # 5	Farm or Lease Doe Canyon	County Montezuma	State Colorado	Well Permit Number
Customer KINDER MORGAN INC		Well Owner KINDER MORGAN INC	Job Purpose Plug Service - Whipstock	

THIS WORK ORDER MUST BE SIGNED BEFORE WORK IS COMMENCED

A. **CUSTOMER REPRESENTATION** - Customer warrants that the well is in proper condition to receive the services, equipment, products, and materials to be supplied by Halliburton Energy Services, Inc. (hereinafter "Halliburton")

8. **PRICE AND PAYMENT** - The services, equipment, products, and/or materials to be supplied hereunder are priced in accordance with Halliburton's current price list. All prices are exclusive of taxes. If Customer does not have an approved open account with Halliburton, all sums due are payable in cash at the time of performance of services or delivery of equipment, products or materials. If Customer has an approved open account, invoices are payable on the twentieth day after the date of invoice. Customer agrees to pay interest on any unpaid balance from the date payable until paid at the highest lawful contract rate applicable, but never to exceed 18% per annum. In the event Halliburton employs an attorney for collection of any account, Customer agrees to pay attorney fees of 20% of the unpaid account, or Halliburton's actual attorneys fees, whichever is greater, plus all collection and court costs. Customer agrees that the amount of attorney fees set out herein are reasonable and necessary.

**C. RELEASE AND INDEMNITY** - Customer agrees to RELEASE Halliburton Group from any and all liability for any and all damages whatsoever to property of any kind owned by, in the possession of, or leased by Customer and those persons and entities Customer had the ability to bind by contract or which are co-interest owners or joint ventures with Customer. Customer also agrees to DEFEND, INDEMNIFY, AND HOLD Halliburton Group HARMLESS from and against any and all liability, claims, costs, expenses, attorney fees and damages whatsoever for personal injury, illness, death, property damage and loss resulting from

[illegible]

**CUSTOMER'S RELEASE, DEFENSE, INDEMNITY AND HOLD HARMLESS** Obligations will apply even if the liability and claims are caused by the sole, concurrent, active or passive negligence, fault, or strict liability of one or more members of the Halliburton Group, the unreasonableness of any causal or any defect in the data, products, supplies, hardware or equipment furnished by any member or members of the Halliburton Group whether in the design, manufacture, maintenance or marketing thereof or from a failure to warn of such defect. "Halliburton Group" is defined as Halliburton Energy Services, Inc., its parent, subsidiary and affiliated companies, divisions and subsidiaries and all other officers, directors, employees, consultants and agents. **CUSTOMER'S RELEASE, DEFENSE, INDEMNITY AND HOLD HARMLESS** obligations apply whether the personal injury, illness, death, property damage or loss is suffered by one or more members of the Halliburton Group. Customer, or any active person or entity, Customer agrees to support such obligations, assumed herein with liability insurance with limits of not less than \$500,000. Customer agrees to name Halliburton Group as insured additional insured on all of its general liability policies. Customer agrees that its liability under this Contract is not limited by the amount of its available coverage and may be increased by equitable action for its provisions of this Contract to be enforceable.

D. **EQUIPMENT LIABILITY** - Customer shall at its risk and expense attempt to recover any Halliburton Group equipment lost or lodged in the well. If the equipment is recovered and repairable, Customer shall pay the repair costs, unless caused by Halliburton's sole negligence. If the equipment is not recovered or is irreparable, Customer shall pay the replacement cost, unless caused by Halliburton's sole negligence. If a radioactive source becomes lost or lodged in the well, Customer shall meet all requirements of Section 39.15(a) of the Nuclear Regulatory Commission regulations and any other applicable laws or regulations concerning retrieval or abandonment and shall permit Halliburton to monitor the recovery or abandonment efforts at no risk or liability to Halliburton Group. Customer shall be responsible for damage to or loss of Halliburton group equipment, products, and materials while in transit aboard Customer-supplied transportation, even if such is arranged by Halliburton at Customer's request, and during loading and unloading from such transport. Customer will also pay for the repair or replacement of Halliburton group equipment damaged by corrosion or abrasion due to well effluents.

E. LIMITED WARRANTY - Halliburton warrants only title to the equipment, products, and materials supplied under this Contract and that same are free from defects in workmanship and materials for thirty (30) days from the date of delivery. THERE ARE NO WARRANTIES, EXPRESS OR IMPLIED, OF MERCHANTABILITY, FITNESS OR OTHERWISE BEYOND THOSE STATED IN THE IMMEDIATELY PRECEDING SENTENCE. Halliburton's sole liability and Customer's exclusive remedy in any cause of action (whether in contract, tort, breach of warranty or otherwise) arising out of the sale, lease or use of any equipment, products, or materials is expressly limited to the replacement of such on their return to Halliburton or, at Halliburton's option, to the allowance to Customer of credit for the cost of such items. In no event shall Halliburton be liable for special, incidental, indirect, consequential, or punitive damages. Because of the uncertainty of variable well conditions and the necessity of relying on facts and supporting services furnished by others, HALLIBURTON IS UNABLE TO GUARANTEE THE EFFECTIVENESS OF THE EQUIPMENT, MATERIALS, OR SERVICE, NOR THE ACCURACY OF ANY CHART INTERPRETATION, RESEARCH ANALYSIS, JOB RECOMMENDATION OR OTHER DATA FURNISHED BY HALLIBURTON GROUP. Halliburton personnel will use their best efforts in gathering such information and their best judgment in interpreting it, but Customer agrees that Halliburton Group shall not be liable for and CUSTOMER SHALL INDEMNIFY HALLIBURTON GROUP AGAINST ANY DAMAGES ARISING FROM THE USE OF SUCH INFORMATION, even if such is contributed to or caused by the active or passive negligence, fault or strict liability of any member or members of Halliburton Group. Halliburton also does not warrant the accuracy of data transmitted by electronic process, and Halliburton will not be responsible for accidental or intentional interception of such data by third parties.

F. **GOVERNING LAW** - The validity, interpretation and construction of this Contract shall be determined by the laws of the jurisdiction where the services are performed or the equipment or materials are delivered.

6. **DISPUTE RESOLUTION** Customer and Halliburton agree that any dispute that may arise out of the performance of this Contract shall be resolved by binding arbitration by a panel of three arbitrators under the rules of the American Arbitration Association. The arbitration will take place in Houston, TX.

H. SEVERABILITY - If any provision or part thereof of this Contract shall be held to be invalid, void, or of no effect for any reason, such holding shall not be deemed to affect the validity of the remaining provisions of this Contract which can be given effect, without the invalid provision or part thereof, and to this end, the provisions of this Contract are declared to be severable. Customer and Halliburton agree that any provision of this Contract that is unenforceable or void under applicable law will be modified to achieve the intent of the parties hereunder to the greatest extent allowed by applicable law.

1. MODIFICATIONS - Customer agrees that Halliburton shall not be bound by any modifications to this Contract, except where such modification is made in writing by a duly authorized executive officer of Halliburton. Requests for modifications should be directed to the Vice President - Legal, 10200 Bellaire Blvd., Houston, TX 77072-5299.

I HAVE READ AND UNDERSTAND THIS WORK ORDER CONTRACT WHICH CONTAINS RELEASE AND INDEMNITY LANGUAGE WHICH CUSTOMER ACKNOWLEDGES.

IS CONSPICUOUS AND AFFORDS FAIR AND ADEQUATE NOTICE AND I REPRESENT THAT I AM AUTHORIZED TO SIGN THE SAME AS CUSTOMER'S AGENT. I AM SIGNING THIS WORK ORDER CONTRACT WITH THE UNDERSTANDING THAT ITS TERMS AND CONDITIONS WILL NOT APPLY TO THE EXTENT THEY CONFLICT WITH TERMS AND CONDITIONS OF A SIGNED MASTER SERVICE CONTRACT BETWEEN THE PARTIES.

SIGNED:

**CUSTOMER Authorized Signatory**

DATE:

9.18.07

TIME:

08:30

AM



*The Road to Excellence Starts with Safety*

Sold To #: 320986		Ship To #: 2577158		Quote #:		Sales Order #: 5365083	
Customer: KINDER MORGAN INC				Customer Rep: Spittler, Larry			
Well Name: Doe Canyon			Well #: # 5		API/UWI #: 05-033-11111		
Field: PARADOX/ DESERT CREEK		City (SAP): Pleasant View, Colorado		County/Parish: Montezuma		State: Colorado	
<b>Legal Description:</b>							
Lat: N 0 deg. OR N 0 deg. 0 min. 0 secs.				Long: E 0 deg. OR E 0 deg. 0 min. 0 secs.			
Contractor: Patterson UTI Drilling Co.			Rig/Platform Name/Num: Patterson UTI 747				
Job Purpose: Plug Service - Whipstock						Ticket Amount:	
Well Type: Development Well			Job Type: Plug Service - Whipstock				
Sales Person: SNYDER, RANDALL			Srcv Supervisor: DOBBS, GARY			MBU ID Emp #: 122012	

Activity Description	Date/Time	Cht #	Rate bbl/ min	Volume bbl		Pressure psig		Comments
				Stage	Total	Tubing	Casing	
Arrive at Location from Service Center	09/18/2007 08:30							
Assessment Of Location Safety Meeting	09/18/2007 08:35							
Wait on Customer or Customer Sub-Contractor Equip	09/18/2007 08:45							
Pump Spacer 1	09/18/2007 09:49		3	10		300.0		fresh water
Pump Cement	09/18/2007 09:49		4	18.8		450.0		pump cement mixed @ 16.5
Pump Displacement	09/18/2007 09:49		4	63.3		200.0		fresh water
Bump Plug	09/18/2007 09:49					215.0		
Pressure Up Tubing	09/18/2007 09:49					2500.0		pressure up drill pipe to sheere off tool
Post-Job Safety Meeting (Pre Rig-Down)	09/18/2007 10:38							
Pre-Rig Up Safety Meeting	09/18/2007 11:00							
Rig-Up Equipment	09/18/2007 11:10							
Pre-Job Safety Meeting	09/18/2007 12:00							
Start Job	09/18/2007 12:15							
Test Lines	09/18/2007 12:16					3500.0		
Circulate Well	09/18/2007 15:14					4300.0		could not pull drill pipe out of hole after job, tried to circulate cement out psi. to 4300

Activity Description	Date/Time	Cht #	Rate bbl/ min	Volume bbl		Pressure psig		Comments
				Stage	Total	Tubing	Casing	
Unknown Event Number	09/18/2007 15:14							pipe stuck in hole
End Job	09/18/2007 15:14							

***Kinder morgan***

**Doe Canyon  
#5**

**API Well No.:**

S/18 T/40N R17W

6/18/2007

**Montezuma  
County**

**Whip Stock Plug**

**Customer Representative:**

Jimmy Hale 1-970-799-1931

**Halliburton Operator:**

Bill Eaves 232192

**Ticket No.:**

**5176331**

**Halliburton**

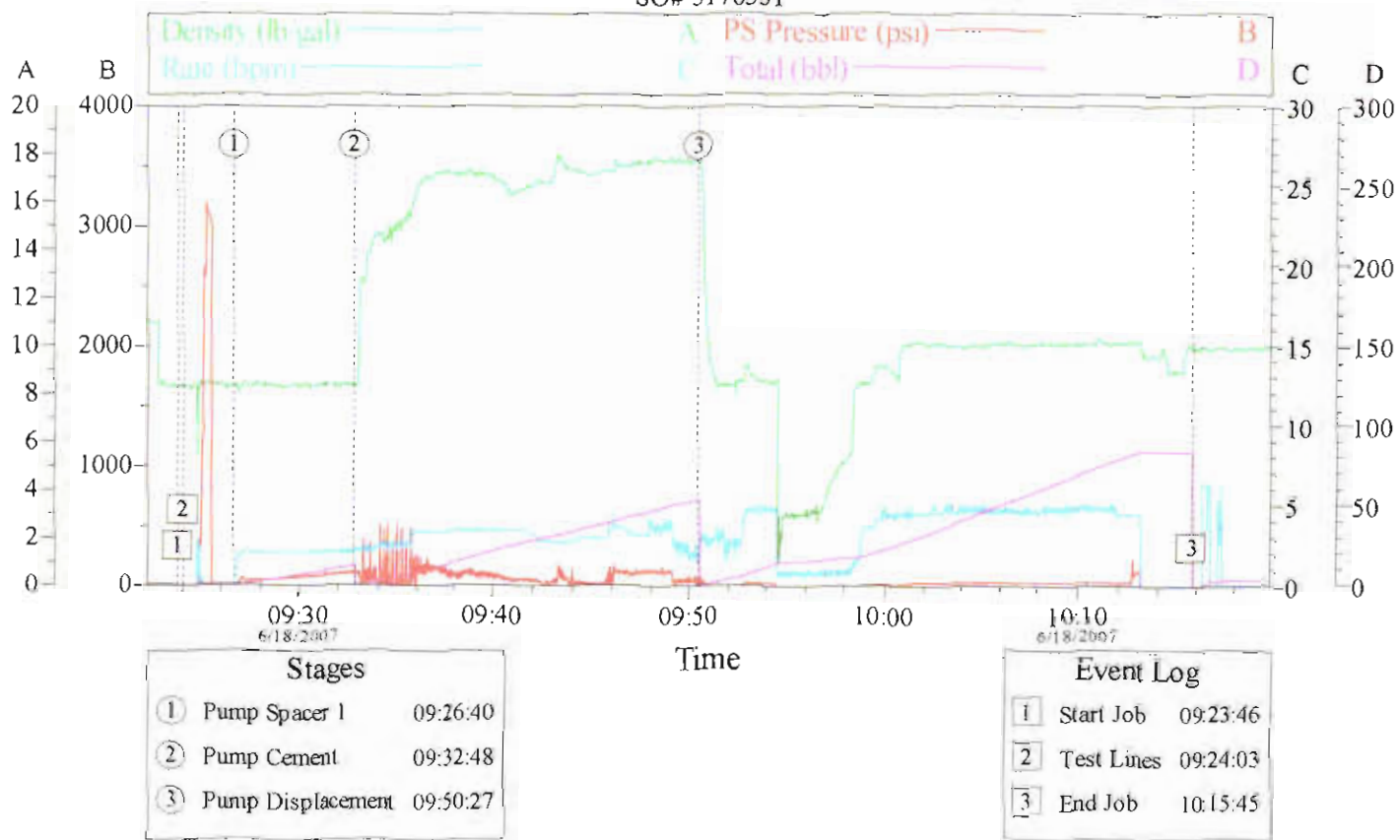


[illegible]

# Kinder Morgan

4 1/2" whip stock

SO# 5176331

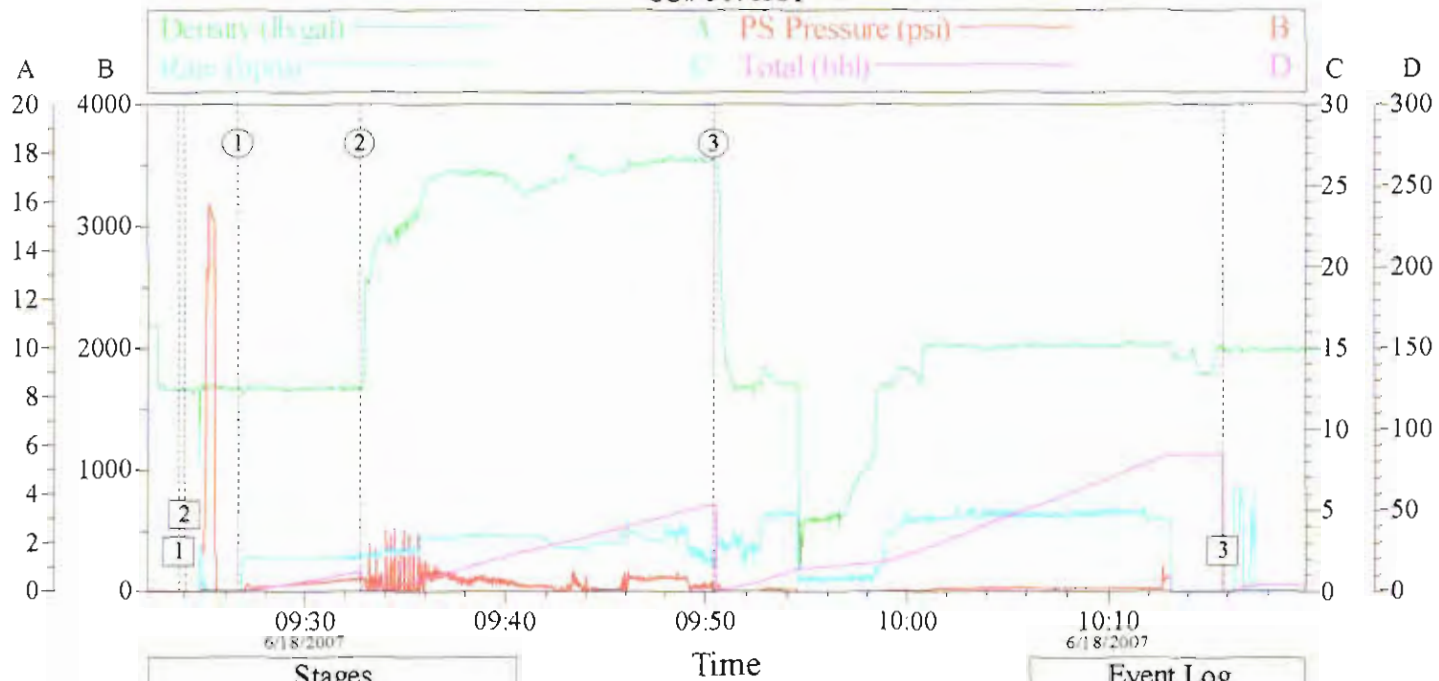




# Kinder Morgan

4 1/2" whip stock

SO# 5176331



Stages		
①	Pump Spacer 1	09:26:40
②	Pump Cement	09:32:48
③	Pump Displacement	09:50:27

Event Log		
①	Start Job	09:23:46
②	Test Lines	09:24:03
③	End Job	10:15:45

[illegible]



Halliburton Energy Services, Inc.  
Houston, Texas 77056

70012 SAP

TO: HALLIBURTON ENERGY SERVICES, INC. - YOU ARE HEREBY REQUESTED TO FURNISH EQUIPMENT AND SERVICE PERSONNEL TO DELIVER AND OPERATE THE SAME AS AN INDEPENDENT CONTRACTOR TO CUSTOMER LISTED BELOW AND DELIVER AND SELL PRODUCTS, SUPPLIES AND MATERIALS FOR THE PURPOSE OF SERVICING:

Well No <b>#5</b>	Farm or Lease <b>Doe Canyon</b>	County <b>Montezuma</b>	State <b>CO</b>	Well Permit Number
Customer <b>Jimmy Hale 1-970-799-1931</b>	Well Owner <b>Kinder morgan</b>	Job Purpose <b>Whip Stock Plug</b>		

A. CUSTOMER REPRESENTATION - Customer warrants that the well is in proper condition to receive the services, equipment, products, and materials to be supplied by Halliburton Energy Services, Inc. (hereinafter "Halliburton").

B. PRICE AND PAYMENT - The services, equipment, products, and/or materials to be supplied hereunder are priced in accordance with Halliburton's current price list. All prices are exclusive of taxes. If Customer does not have an approved open account with Halliburton, all sums due are payable in cash at the time of performance of services or delivery of equipment, products or materials. If Customer has an approved open account, invoices are payable on the twentieth day after the date of invoice. Customer agrees to pay interest on any unpaid balance from the date payable until paid at the highest lawful contract rate applicable, but never to exceed 18% per annum. In the event Halliburton employs an attorney for collection of any account, Customer agrees to pay attorney fees of 20% of the unpaid account, or Halliburton's actual attorneys fees, whichever is greater, plus all collection and court costs. Customer agrees that the amount of attorney fees set out herein are reasonable and necessary.

C. RELEASE AND INDEMNITY - Customer agrees to **RELEASE** Halliburton Group from any and all liability for any and all damages whatsoever to property of any kind owned by, in the possession of, or leased by Customer and those persons and entities Customer has the ability to bind by contract for which are co-tenants, owners or joint ventures with Customer. Customer also agrees to **DEFEND, INDEMNIFY, AND HOLD** Halliburton Group **HARMLESS** from and against any and all liability, claims, costs, expenses, attorney fees and damages whatsoever for personal injury, illness, death, property damage and loss resulting from:

use of well control services to control a well well whether underground or above the surface, reservoir or underground damage, including use of oil, gas, other mineral substances or water, surface damage arising from underground damage, damage to or loss of the well bore, subsurface losses or any action in the nature thereof, fire, explosion, radioactive materials, radioactivity, and pollution and contamination and its control and control.

CUSTOMER'S RELEASE, DEFENSE, INDEMNITY AND HOLD HARMLESS obligations will apply even if the liability and claims are caused by the sole, concurrent, acted-on,

passive negligence, fault, or strict liability of one or more members of the Halliburton Group, the unavailability of any causal or any defect in the data, products, supplies, materials or equipment furnished by any member or members of the Halliburton Group whether in the design, manufacture, maintenance or marketing thereof or from a latent or want of such defect. "Halliburton Group" is defined as Halliburton Energy Services, Inc., its parent, subsidiary, and affiliated companies, insurers and subcontractors and all director, officers, directors, employees, consultants and agents. Customer's **RELEASE, DEFENSE, INDEMNITY AND HOLD HARMLESS** obligations apply whether the personal injury, illness, death, property damage or loss is suffered by one or more members of the Halliburton Group, Customer, or any other person or entity. Customer agrees to support such obligations asserted herein with liability insurance with limits of not less than \$50,000. Customer agrees to name Halliburton Group as named additional insured on all of its general liability policies. Customer agrees that its liability under this Contract is not limited by the amounts of its insurance coverage, except where and as may be required by applicable local law for the provisions of this Contract to be enforceable.

D. EQUIPMENT LIABILITY - Customer shall at its risk and expense attempt to recover any Halliburton Group equipment lost or lodged in the well. If the equipment is recovered and repairable, Customer shall pay the repair costs, unless caused by Halliburton's sole negligence. If the equipment is not recovered or is irreparable, Customer shall pay the replacement cost, unless caused by Halliburton's sole negligence. If a radioactive source becomes lost or lodged in the well, Customer shall meet all requirements of Section 39.15(a) of the Nuclear Regulatory Commission regulations and any other applicable laws or regulations concerning retrieval or abandonment and shall permit Halliburton to monitor the recovery or abandonment efforts all at no risk or liability to Halliburton Group. Customer shall be responsible for damage to or loss of Halliburton group equipment, products, and materials while in transit aboard Customer-supplied transportation, even if such is arranged by Halliburton at Customer's request, and during loading and unloading from such transport. Customer will also pay for the repair or replacement of Halliburton group equipment damaged by corrosion or abrasion due to well effluents.

E. LIMITED WARRANTY - Halliburton warrants only title to the equipment, products, and materials supplied under this Contract and that same are free from defects in workmanship and materials for thirty (30) days from the date of delivery. **THERE ARE NO WARRANTIES, EXPRESS OR IMPLIED, OF MERCHANTABILITY, FITNESS OR OTHERWISE BEYOND THOSE STATED IN THE IMMEDIATELY PRECEDING SENTENCE.** Halliburton's sole liability and Customer's exclusive remedy in any cause of action (whether in contract, tort, breach of warranty or otherwise) arising out of the sale, lease or use of any equipment, products, or materials is expressly limited to the replacement of such on their return to Halliburton or, at Halliburton's option, to the allowance to Customer of credit for the cost of such items. In no event shall Halliburton be liable for special, incidental, indirect, consequential, or punitive damages. Because of the uncertainty of variable well conditions and the necessity of relying on facts and supporting services furnished by others, **HALLIBURTON IS UNABLE TO GUARANTEE THE EFFECTIVENESS OF THE EQUIPMENT, MATERIALS, OR SERVICE, NOR THE ACCURACY OF ANY CHART**

**INTERPRETATION, RESEARCH ANALYSIS, JOB RECOMMENDATION OR OTHER DATA FURNISHED BY HALLIBURTON GROUP.** Halliburton personnel will use their best efforts in gathering such information and their best judgment in interpreting it, but Customer agrees that Halliburton Group shall not be liable for and CUSTOMER SHALL INDEMNIFY HALLIBURTON GROUP AGAINST ANY DAMAGES ARISING FROM THE USE OF SUCH INFORMATION, even if such is contributed to or caused by the active or passive negligence, fault or strict liability of any member or members of Halliburton Group. Halliburton also does not warrant the accuracy of data transmitted by electronic process, and Halliburton will not be responsible for accidental or intentional interception of such data by third parties.

F. GOVERNING LAW - The validity, interpretation and construction of this Contract shall be determined by the laws of the jurisdiction where the services are performed or the equipment or materials are delivered.

G. DISPUTE RESOLUTION - Customer and Halliburton agree that any dispute that may arise out of the performance of this Contract shall be resolved by binding arbitration by a panel of three arbitrators under the rules of the American Arbitration Association. The arbitration will take place in Houston, TX.

H. SEVERABILITY - If any provision or part thereof of this Contract shall be held to be invalid, void, or of no effect for any reason, such holding shall not be deemed to affect the validity of the remaining provisions of this Contract which can be given effect, without the invalid provision or part thereof, and to this end, the provisions of this Contract are declared to be severable. Customer and Halliburton agree that any provision of this Contract that is unenforceable or void under applicable law will be modified to achieve the intent of the parties hereunder to the greatest extent allowed by applicable law.

I. MODIFICATIONS - Customer agrees that Halliburton shall not be bound by any modifications to this Contract, except where such modification is made in writing by a duly authorized executive officer of Halliburton. Requests for modifications should be directed to the Vice President - Legal, 4100 Clinton Drive, Houston, TX 77020.

I HAVE READ AND UNDERSTAND THIS WORK ORDER CONTRACT WHICH CONTAINS RELEASE AND INDEMNITY LANGUAGE WHICH

CUSTOMER ACKNOWLEDGES IS CONSPICUOUS AND AFFORDS FAIR AND ADEQUATE NOTICE AND I REPRESENT THAT I AM AUTHORIZED TO SIGN THE SAME AS CUSTOMER'S AGENT.

SIGNED:

DATE:

TIME:

A.M./P.M.

CUSTOMER Authorized Signatory

Customer Acceptance of Materials and Services

THE CUSTOMER HEREBY ACKNOWLEDGES RECEIPT OF THE  
MATERIALS AND SERVICES DESCRIBED ON THE ATTACHED  
ORDER NUMBER

5176331

CUSTOMER Authorized Signatory