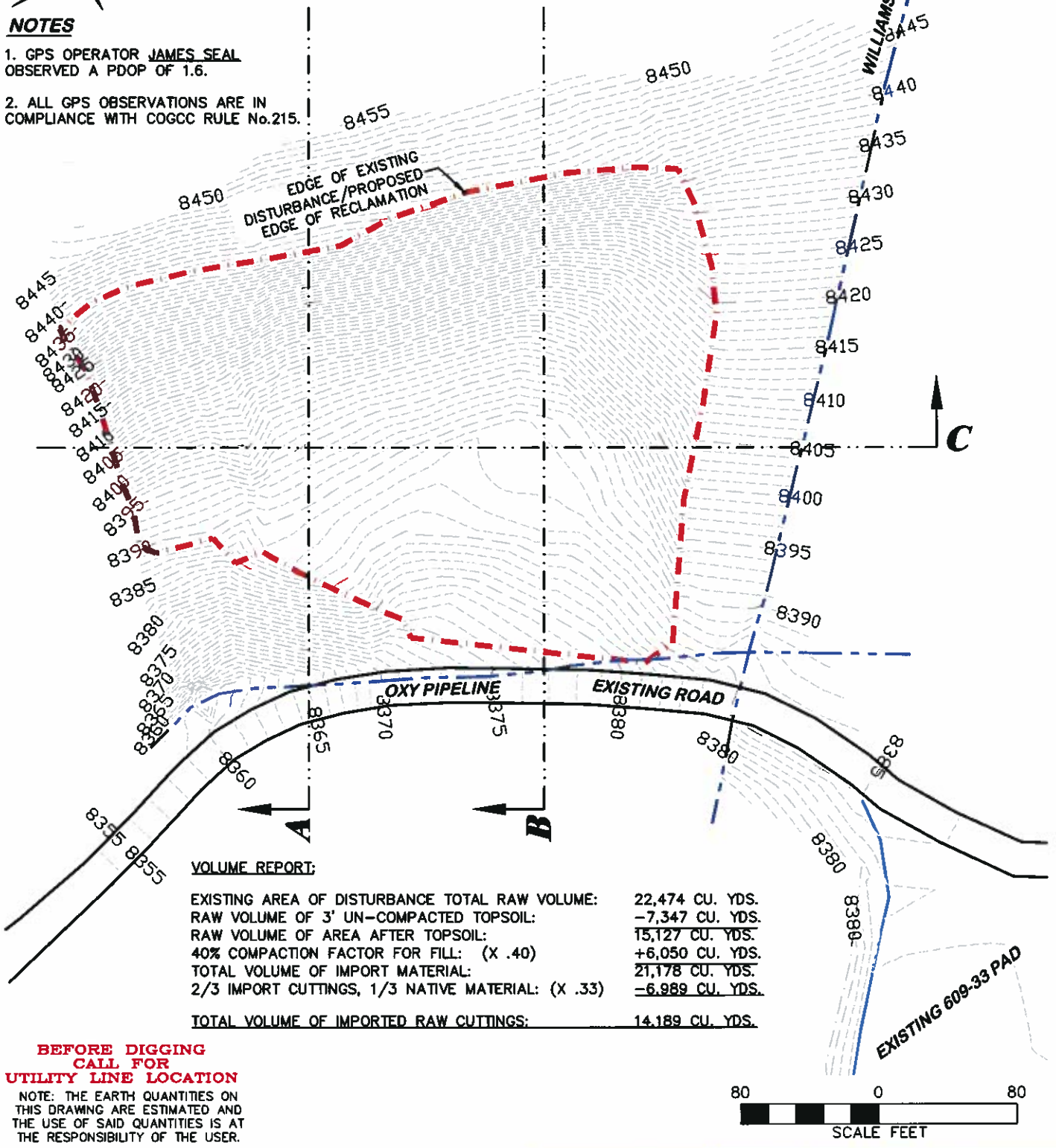


EXISTING GROUND CONDITIONS



NOTES

1. GPS OPERATOR JAMES SEAL OBSERVED A PDOP OF 1.6.
2. ALL GPS OBSERVATIONS ARE IN COMPLIANCE WITH COGCC RULE No.215.



VOLUME REPORT:

EXISTING AREA OF DISTURBANCE TOTAL RAW VOLUME:	22,474 CU. YDS.
RAW VOLUME OF 3' UN-COMPACTED TOPSOIL:	-7,347 CU. YDS.
RAW VOLUME OF AREA AFTER TOPSOIL:	15,127 CU. YDS.
40% COMPACTION FACTOR FOR FILL: (X .40)	+6,050 CU. YDS.
TOTAL VOLUME OF IMPORT MATERIAL:	21,178 CU. YDS.
2/3 IMPORT CUTTINGS, 1/3 NATIVE MATERIAL: (X .33)	-6,989 CU. YDS.
TOTAL VOLUME OF IMPORTED RAW CUTTINGS:	14,189 CU. YDS.

**BEFORE DIGGING
CALL FOR
UTILITY LINE LOCATION**

NOTE: THE EARTH QUANTITIES ON THIS DRAWING ARE ESTIMATED AND THE USE OF SAID QUANTITIES IS AT THE RESPONSIBILITY OF THE USER.

DRIFIN & ASSOCIATES, INC.
 1414 ELK ST., ROCK SPRINGS, WY 82901
 (307) 362-5028

DRAWN: 12/13/10 - DEH	SCALE: 1" = 80'
REVISED: 2/17/11 - DEH	JOB No. 18232
ADDED PDOP NOTE	EXHIBIT 2

CONSTRUCTION LAYOUT DRAWING 1 OF 4

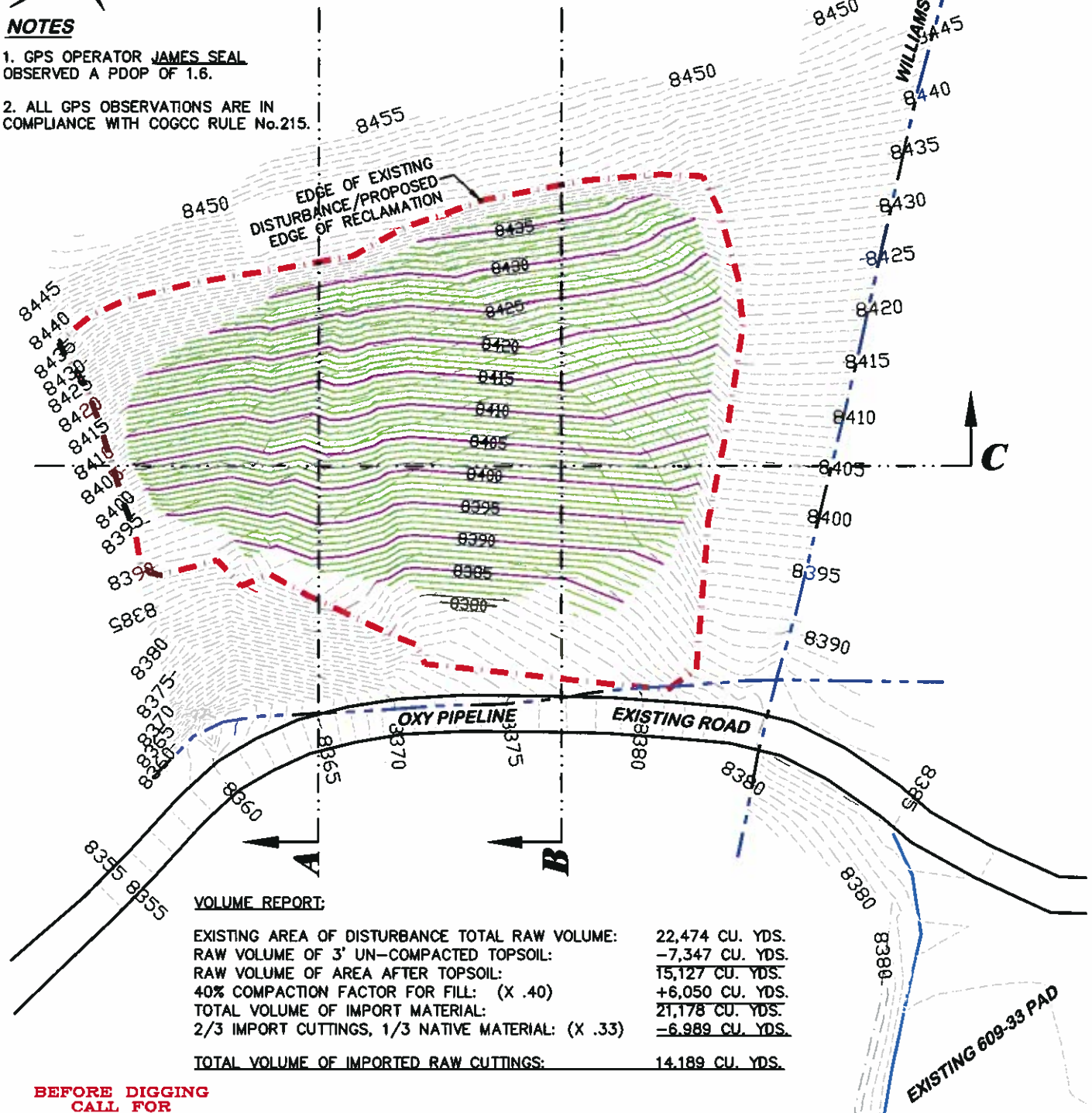
**OXY USA WTP LP
CUTTINGS RECLAMATION AREA
NWSE SECTION 9, T. 6 S., R. 97 W., 6th P.M.,
GARFIELD COUNTY, COLORADO**

PROPOSED SUB-GRADE CONDITIONS



NOTES

1. GPS OPERATOR JAMES SEAL OBSERVED A PDOP OF 1.6.
2. ALL GPS OBSERVATIONS ARE IN COMPLIANCE WITH COGCC RULE No.215.



VOLUME REPORT:

EXISTING AREA OF DISTURBANCE TOTAL RAW VOLUME:	22,474 CU. YDS.
RAW VOLUME OF 3' UN-COMPACTED TOPSOIL:	-7,347 CU. YDS.
RAW VOLUME OF AREA AFTER TOPSOIL:	15,127 CU. YDS.
40% COMPACTION FACTOR FOR FILL: (X .40)	+6,050 CU. YDS.
TOTAL VOLUME OF IMPORT MATERIAL:	21,178 CU. YDS.
2/3 IMPORT CUTTINGS, 1/3 NATIVE MATERIAL: (X .33)	-6,989 CU. YDS.
TOTAL VOLUME OF IMPORTED RAW CUTTINGS:	14,189 CU. YDS.

BEFORE DIGGING CALL FOR UTILITY LINE LOCATION

NOTE: THE EARTH QUANTITIES ON THIS DRAWING ARE ESTIMATED AND THE USE OF SAID QUANTITIES IS AT THE RESPONSIBILITY OF THE USER.



DRG RIFFIN & ASSOCIATES, INC.
 1414 ELK ST., ROCK SPRINGS, WY 82901
 (307) 362-5028

CONSTRUCTION LAYOUT DRAWING 2 OF 4

**OXY USA WTP LP
 CUTTINGS RECLAMATION AREA
 NWSE SECTION 9, T. 6 S., R. 97 W., 6th P.M.,
 GARFIELD COUNTY, COLORADO**

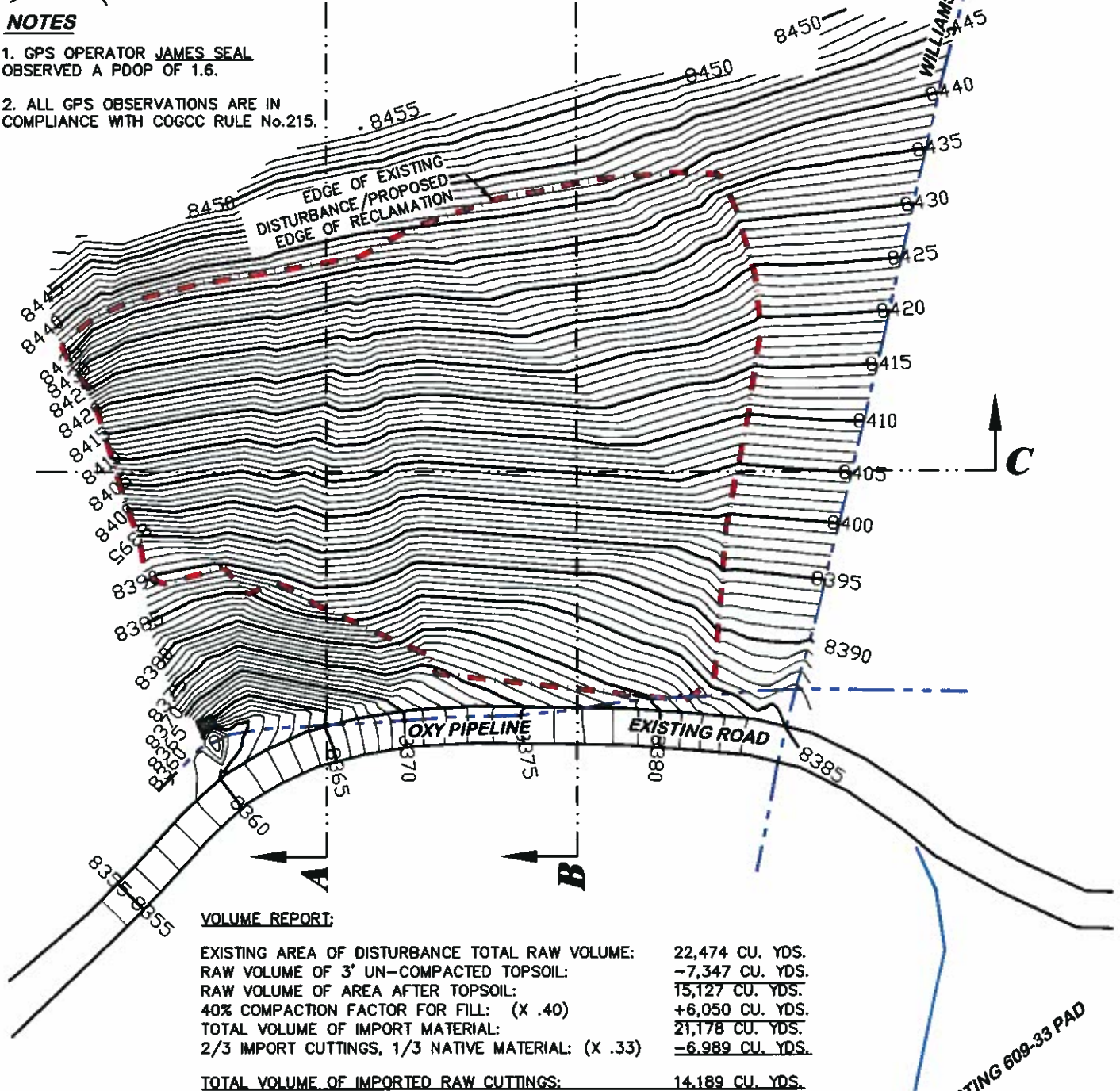
DRAWN: 12/13/10 - DEH	SCALE: 1" = 80'
REVISED: 2/17/11 - DEH	JOB No. 18232
ADDED PDOP NOTE	EXHIBIT 2A

PROPOSED FINAL RECLAMATION CONDITIONS



NOTES

1. GPS OPERATOR JAMES SEAL OBSERVED A PDOP OF 1.6.
2. ALL GPS OBSERVATIONS ARE IN COMPLIANCE WITH COGCC RULE No.215.

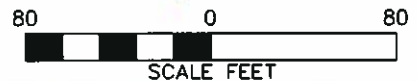


VOLUME REPORT:

EXISTING AREA OF DISTURBANCE TOTAL RAW VOLUME:	22,474 CU. YDS.
RAW VOLUME OF 3' UN-COMPACTED TOPSOIL:	-7,347 CU. YDS.
RAW VOLUME OF AREA AFTER TOPSOIL:	15,127 CU. YDS.
40% COMPACTION FACTOR FOR FILL: (X .40)	+6,050 CU. YDS.
TOTAL VOLUME OF IMPORT MATERIAL:	21,178 CU. YDS.
2/3 IMPORT CUTTINGS, 1/3 NATIVE MATERIAL: (X .33)	-6,989 CU. YDS.
TOTAL VOLUME OF IMPORTED RAW CUTTINGS:	14,189 CU. YDS.

BEFORE DIGGING CALL FOR UTILITY LINE LOCATION

NOTE: THE EARTH QUANTITIES ON THIS DRAWING ARE ESTIMATED AND THE USE OF SAID QUANTITIES IS AT THE RESPONSIBILITY OF THE USER.



DRG RIFFIN & ASSOCIATES, INC.
1414 ELK ST., ROCK SPRINGS, WY 82901
(307) 362-5028

CONSTRUCTION LAYOUT DRAWING 3 OF 4

**OXY USA WTP LP
CUTTINGS RECLAMATION AREA
NWSE SECTION 9, T. 6 S., R. 97 W., 6th P.M.,
GARFIELD COUNTY, COLORADO**

DRAWN: 12/13/10 - DEH

SCALE: 1" = 80'

REVISED: 2/17/11 - DEH

JOB No. 18232

ADDED PDOP NOTE

EXHIBIT 2B