

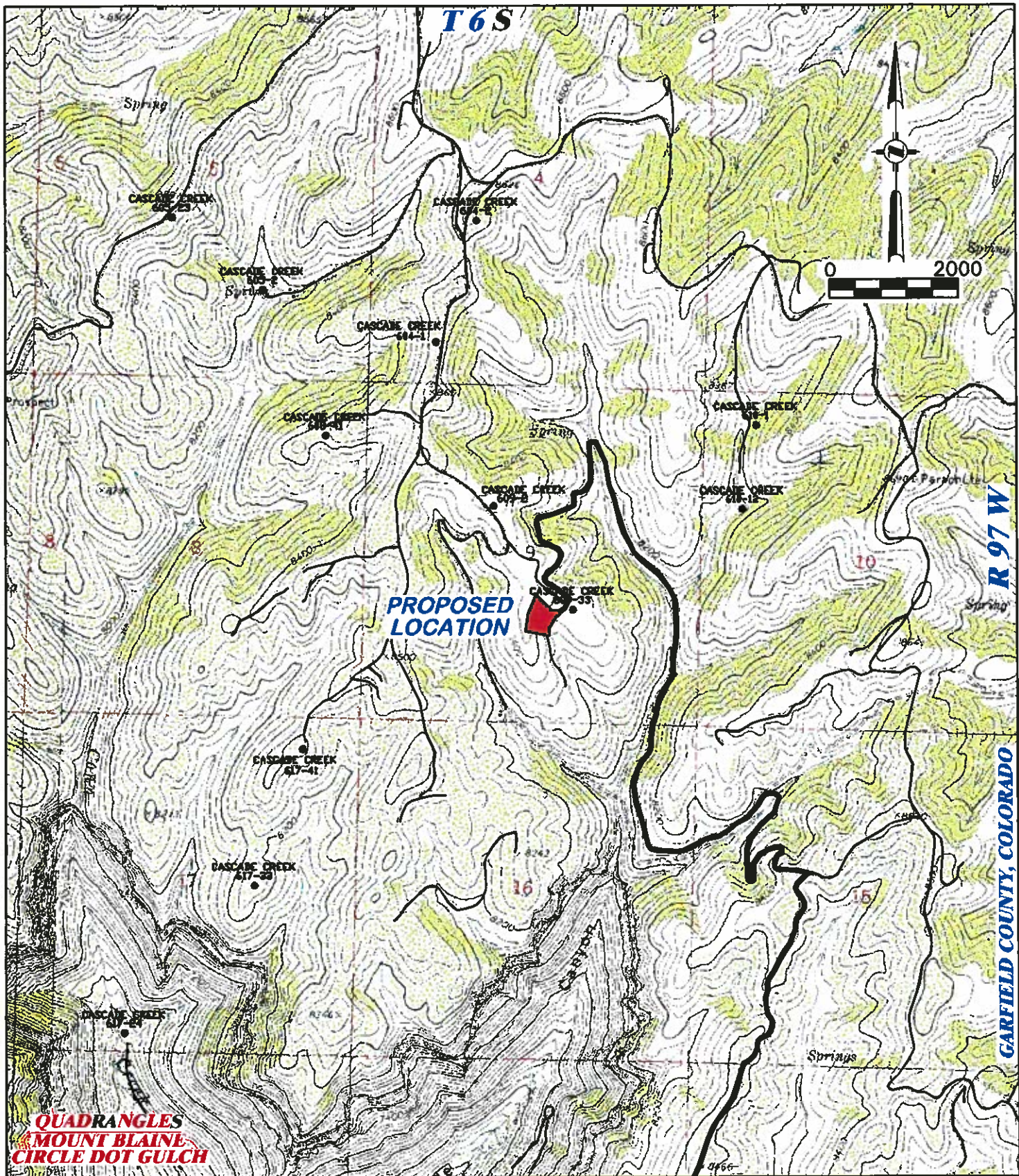


GARFIELD COUNTY, COLORADO

**QUADRANGLES**  
**MOUNT BLAINE**  
**CIRCLE DOT GULCH**  
**LONG POINT**  
**RED PINNACLE**

 <b>DRG RIFFIN &amp; ASSOCIATES, INC.</b> (307) 382-5028 1414 ELK ST., ROCK SPRINGS, WY 82901		<b>ACCESS ROAD MAP</b>	
		<b>OXY USA WTP LP</b> <b>CUTTINGS RECLAMATION AREA</b> <b>NWSE SECTION 9, T. 6 S., R. 97 W., 6th P.M.,</b> <b>GARFIELD COUNTY, COLORADO</b>	
DRAWN: 12/6/09 - DEH	SCALE: 1" = MILE	<b>EXISTING ROAD</b> 	
REVISED: N/A	DRG JOB No. 18232		
EXHIBIT/TOPO 5			



EXISTING ACCESS MAP

OXY USA WTP LP  
 CUTTINGS RECLAMATION AREA  
 NWSE SECTION 9, T. 6 S., R. 97 W., 6th P.M.,  
 GARFIELD COUNTY, COLORADO

**DRG** RIFFIN & ASSOCIATES, INC.  
 (307) 362-5028 1414 ELK ST., ROCK SPRINGS, WY 82901

DRAWN: 12/6/09 - DEH	SCALE: 1" = 2000'	EXISTING ACCESS	
REVISED: N/A	DRG JOB No. 18232		
EXHIBIT/TOPO MAP 4			