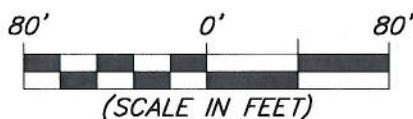
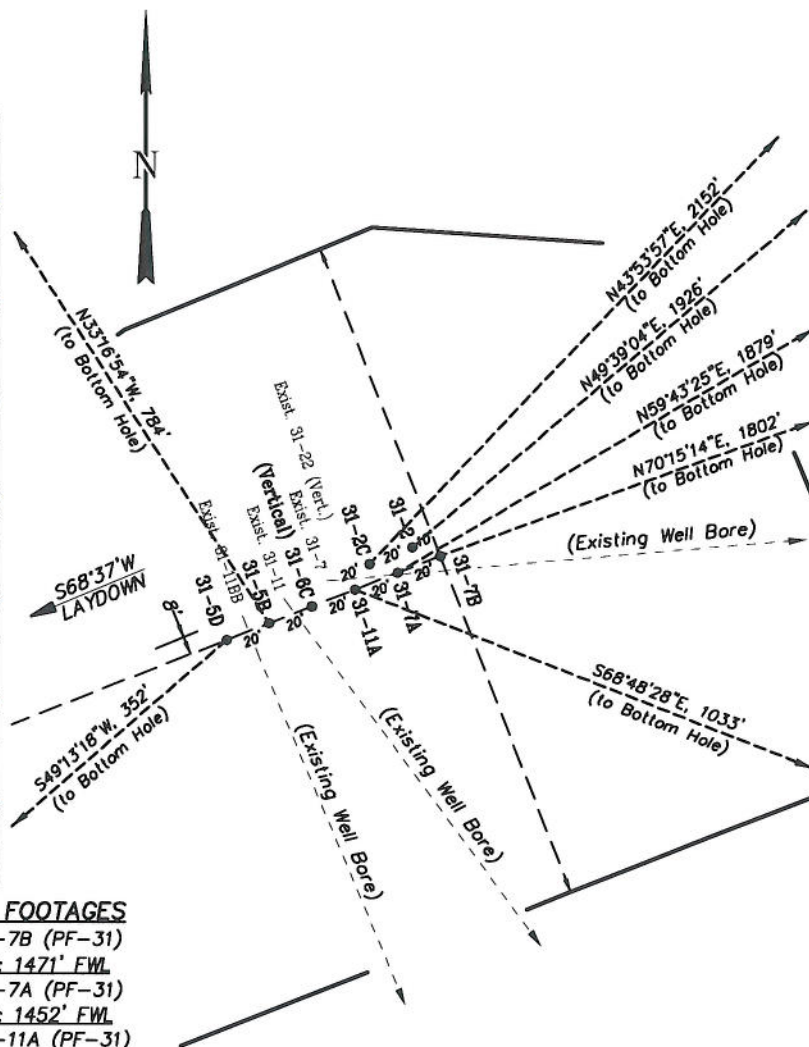


**EnCana Oil & Gas (USA) Inc.**  
**Well Pad (PF-31)**  
**Section 31, T7S, R95W, 6th P.M.**  
**WELL PAD INTERFERENCE PLAT**

<b>FEDERAL 31-7B</b>	
NAD 83 (SURFACE LOCATION)	NAD 83 (BOTTOM HOLE)
LATITUDE = 39.39493°	LATITUDE = 39.39662°
LONGITUDE = 108.04344°	LONGITUDE = 108.03745°
<b>FEDERAL 31-7A</b>	
NAD 83 (SURFACE LOCATION)	NAD 83 (BOTTOM HOLE)
LATITUDE = 39.39491°	LATITUDE = 39.39753°
LONGITUDE = 108.04351°	LONGITUDE = 108.03778°
<b>FEDERAL 31-11A</b>	
NAD 83 (SURFACE LOCATION)	NAD 83 (BOTTOM HOLE)
LATITUDE = 39.39489°	LATITUDE = 39.39388°
LONGITUDE = 108.04357°	LONGITUDE = 108.04016°
<b>FEDERAL 31-6C</b>	
NAD 83 (SURFACE LOCATION)	NAD 83 (BOTTOM HOLE)
LATITUDE = 39.39487°	LATITUDE = 39.39487°
LONGITUDE = 108.04364°	LONGITUDE = 108.04364°
<b>FEDERAL 31-5B</b>	
NAD 83 (SURFACE LOCATION)	NAD 83 (BOTTOM HOLE)
LATITUDE = 39.39485°	LATITUDE = 39.39665°
LONGITUDE = 108.04371°	LONGITUDE = 108.04524°
<b>FEDERAL 31-5D</b>	
NAD 83 (SURFACE LOCATION)	NAD 83 (BOTTOM HOLE)
LATITUDE = 39.39483°	LATITUDE = 39.39420°
LONGITUDE = 108.04377°	LONGITUDE = 108.04471°
<b>FEDERAL 31-2</b>	
NAD 83 (SURFACE LOCATION)	NAD 83 (BOTTOM HOLE)
LATITUDE = 39.39494°	LATITUDE = 39.39838°
LONGITUDE = 108.04349°	LONGITUDE = 108.03831°
<b>FEDERAL 31-2C</b>	
NAD 83 (SURFACE LOCATION)	NAD 83 (BOTTOM HOLE)
LATITUDE = 39.39492°	LATITUDE = 39.39919°
LONGITUDE = 108.04355°	LONGITUDE = 108.03829°

RELATIVE COORDINATES From top hole to bottom hole		
WELL	NORTH	EAST
31-7B	609	1696
31-7A	947	1623
31-11A	-373	963
31-6C	0	0
31-5B	655	-430
31-5D	-230	-267
31-2	1247	1468
31-2C	1551	1492

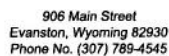
**TOP HOLE FOOTAGES**  
 FEDERAL 31-7B (PF-31)  
 2332' FNL & 1471' FWL  
 FEDERAL 31-7A (PF-31)  
 2340' FNL & 1452' FWL  
 FEDERAL 31-11A (PF-31)  
 2347' FNL & 1434' FWL  
 FEDERAL 31-6C (PF-31)  
 2355' FNL & 1415' FWL  
 FEDERAL 31-5B (PF-31)  
 2362' FNL & 1397' FWL  
 FEDERAL 31-5D (PF-31)  
 2370' FNL & 1378' FWL  
 FEDERAL 31-2 (PF-31)  
 2329' FNL & 1459' FWL  
 FEDERAL 31-2C (PF-31)  
 2336' FNL & 1440' FWL



906 Main Street  
 Evanston, Wyoming 82930  
 Phone No. (307) 789-4545

Interference Plat		Scale: 1" = 80'	SHEET
Project No.	10-04-17	Date Surveyed: 3/15/10	<b>2</b> OF 10
Date Drawn: 5/26/10		Latest Revision Date: 12/15/10	

### WELL PAD LAYOUT



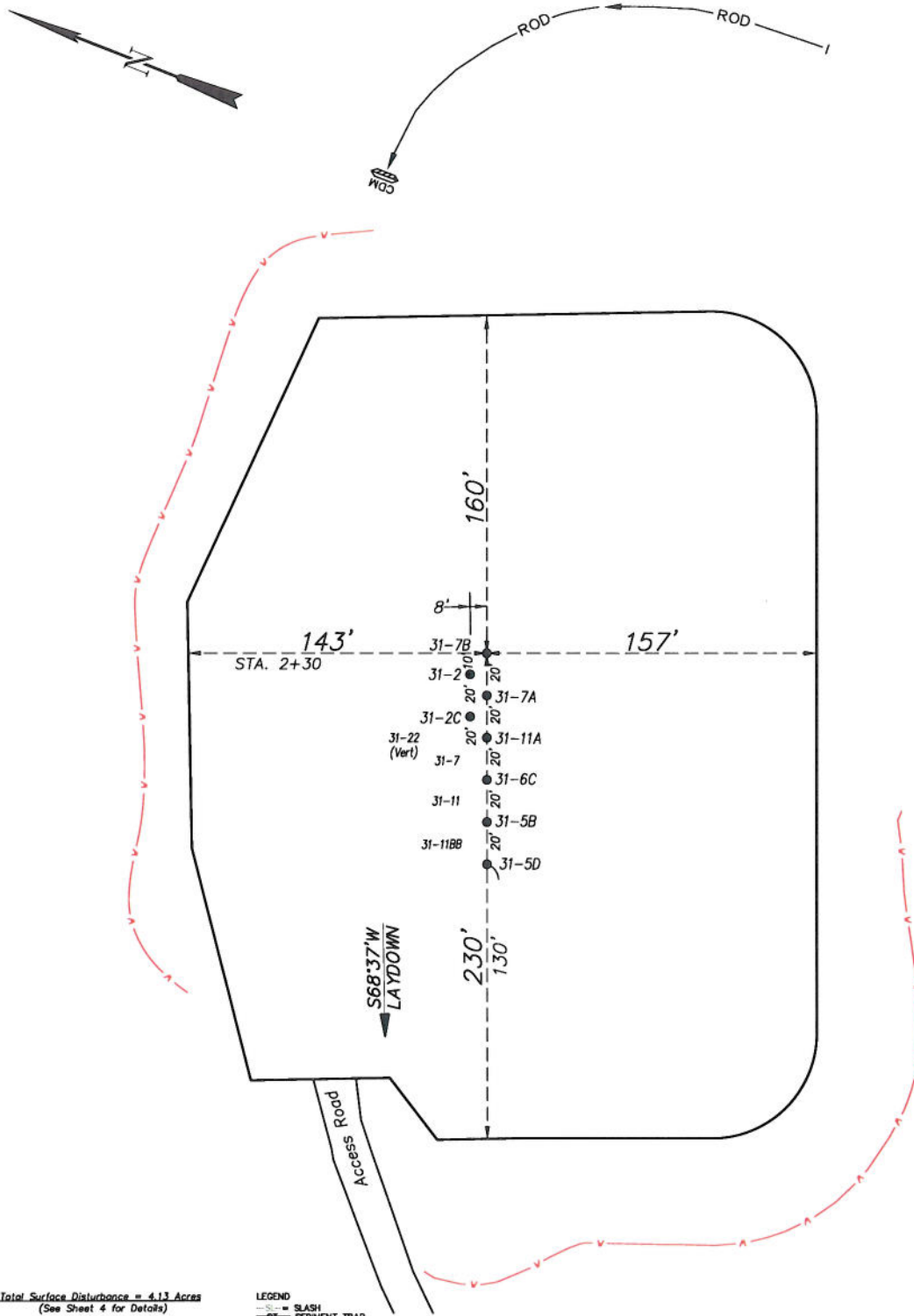
**SHEET**  
**3**  
**OF 10**

# EnCana Oil & Gas (USA) Inc.

## PF-31 Well Pad

SE1/4 NW1/4, SECTION 31, T7S, R95W, 6th P.M.

### PRE-CONSTRUCTION PLAT



Total Surface Disturbance = 4.13 Acres  
(See Sheet 4 for Details)

#### NOTES:

- (1) Slope Track and/or Terrace all Slopes and Piles
  - (2) Erosion Control & Seed Topsoil
  - (3) Erosion Control & Seed Outside
  - (4) Slope away from Substructure
- Areas 1% to 3% to Flow Control

#### LEGEND

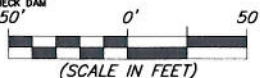
- SLASH
- SEDIMENT TRAP
- SEDIMENT RESERVOIR
- R.O.D. = RUN-ON DIVERSION
- PERIMETER CONTROL (WATTLERS)
- CSD = CUT SLOPE DIVERSION (BERM TOE OF CUT SLOPE)
- F = FILL DIVERSION TO SEDIMENT TRAP
- VB = VEGETATION BUFFER (UNDISTURBED LAND INSIDE PC)
- FCD = FLOW CONTROL DITCH
- PAR = PAD/ACCESS ROAD INTERFACE
- LEVEL SPREADER
- TOE BERM (PLACED AT TOE OF ALL FILL SLOPES/STOCKPILES)
- TOPSOIL BERM
- SEED, EOB & FLEX
- SEED
- CDM
- INSTALL CHECK DAM

PRE-CONSTRUCTION PHASE COMPLETE,  
AUTHORIZATION TO CONTINUE  
CONSTRUCTION.

SIGNATURE: \_\_\_\_\_



906 Main Street  
Evanston, Wyoming 82930  
Phone No. (307) 789-4545

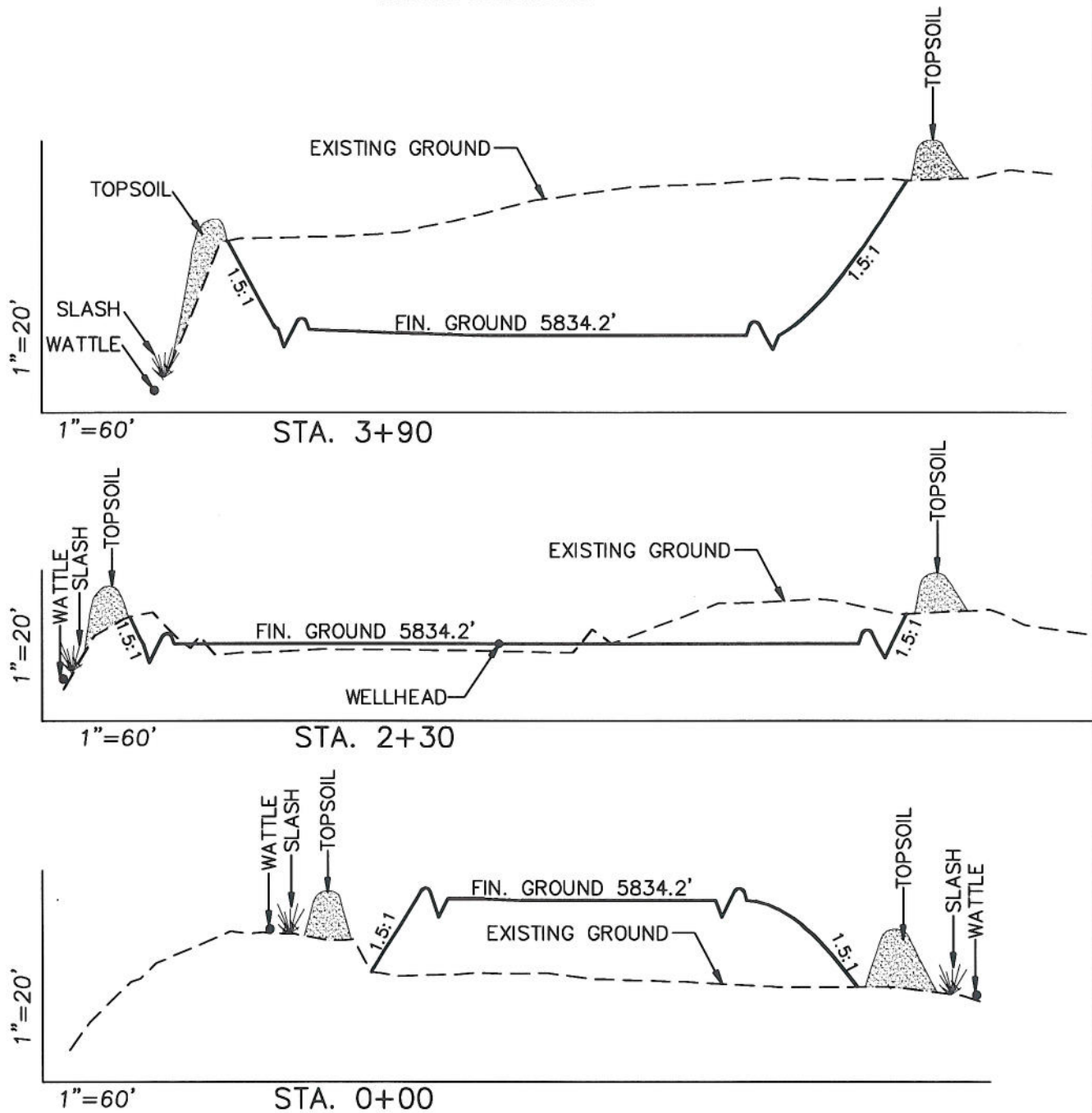


Pre-Construction		Scale: 1" = 60'	SHEET
Project No.	10-04-17	Date Surveyed: 3/15/10	3a OF 10
Date Drawn: 5/26/10		Latest Revision Date: 12/15/10	

# EnCana Oil & Gas (USA) Inc.

## Well Pad (PF-31)

### CROSS SECTIONS



#### SURFACE DISTURBANCE (IN ACRES)

Well Pad	2.5
Side Slopes	0.4
Topsoil & Waste Material	1.23
<b>TOTAL</b>	<b>4.13</b>

**NOTE:**  
ALL CUT AND FILL  
SLOPES ARE AT 1.5:1  
UNLESS OTHERWISE  
NOTED.

#### EARTHWORK QUANTITIES

(in Cubic Yards w/ 0% shrink/swell)

ITEM	CUT	FILL	6" TOPSOIL	EXCESS
PAD	15980	7555	Topsoil not included in Excavation	8425
PIT	0	0		0
<b>TOTALS</b>	<b>15980</b>	<b>7555</b>	<b>1700</b>	<b>8425</b>



906 Main Street  
Evanston, Wyoming 82930  
Phone No. (307) 789-4545

#### Cross Sections

Project No. 10-04-17  
Date Drawn: 5/26/10

#### Scale: As Shown

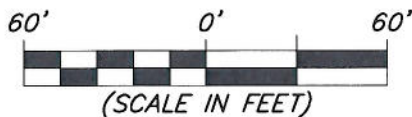
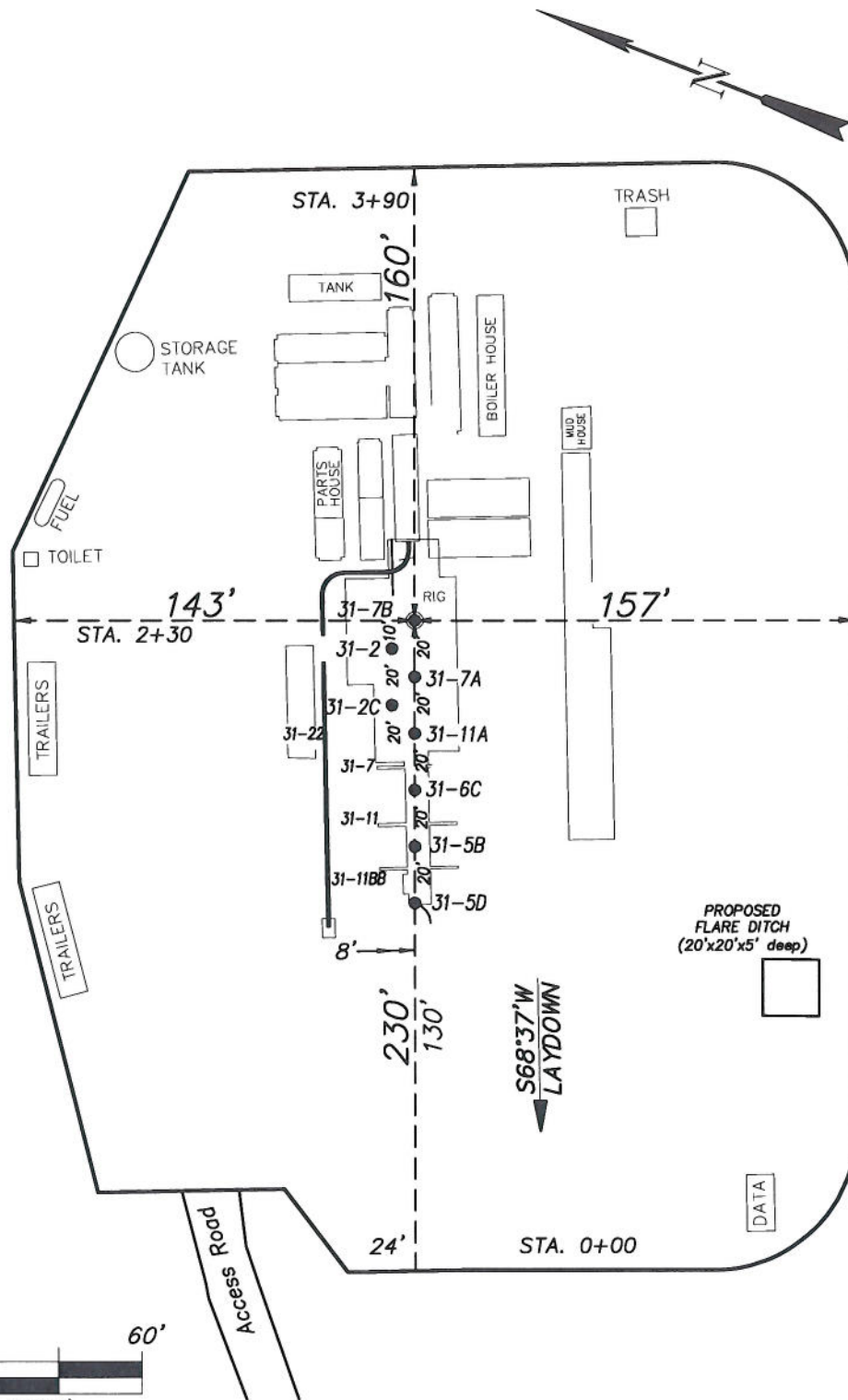
Date Surveyed: 3/15/10  
Latest Revision Date: 12/15/10

#### SHEET

**4**

OF 10

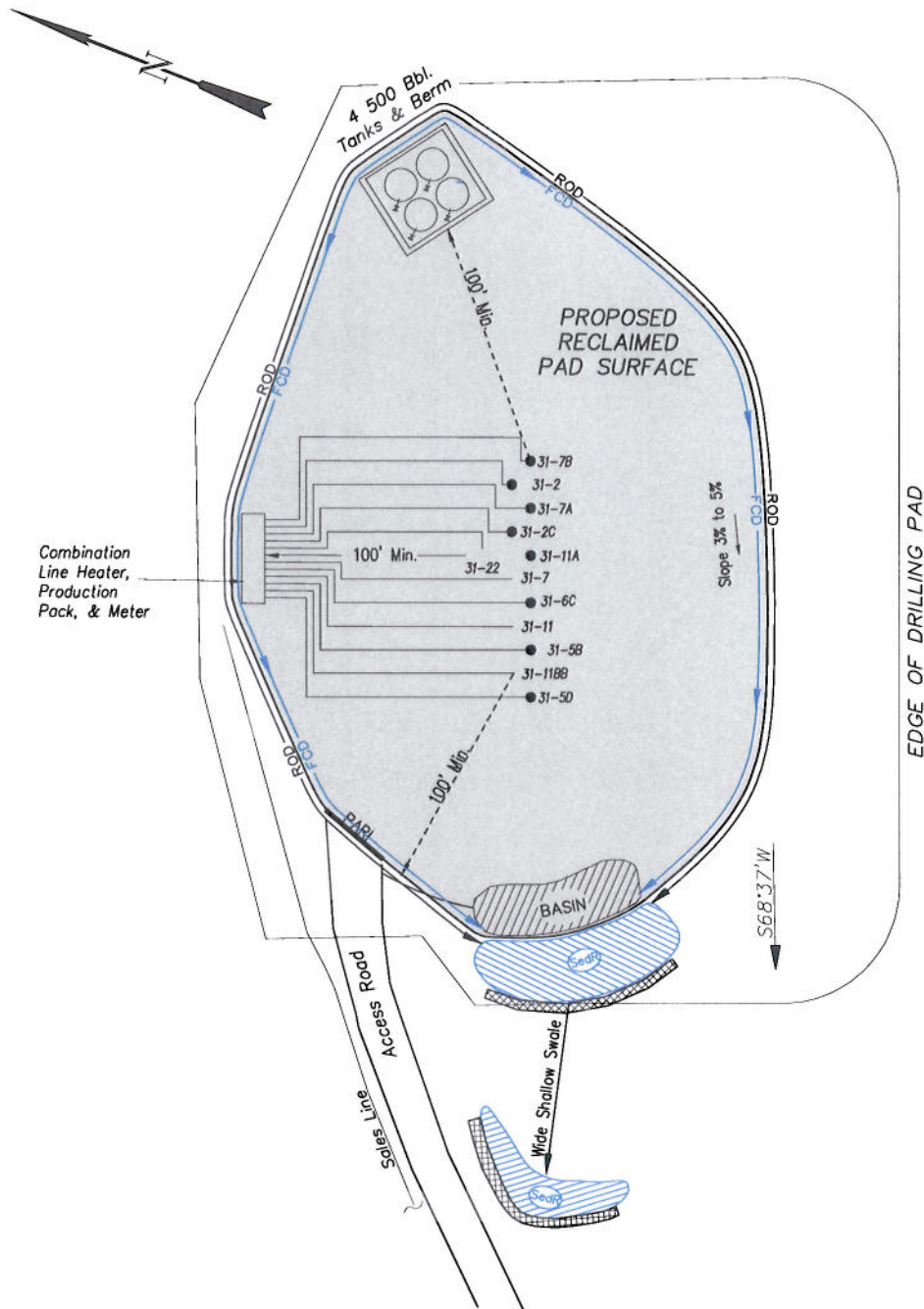
**EnCana Oil & Gas (USA) Inc.**  
**Well Pad (PF-31)**  
**TYPICAL RIG LAYOUT**



906 Main Street  
 Evanston, Wyoming 82930  
 Phone No. (307) 789-4545

Rig Layout		Scale: 1" = 60'	SHEET <b>5</b> OF 10
Project No.	10-04-17	Date Surveyed: 3/15/10	
Date Drawn: 5/26/10	Latest Revision Date: 12/15/10		

**EnCana Oil & Gas (USA) Inc.**  
**PF-31 Well Pad**  
**PRODUCTION SCHEMATIC**



**NOTES:**

1. Set Tanks High so pad Entrance & Tank Area Can Drain to Pad Basin
2. Gravel Pad 75' from Wells & Around Tanks and Separators
3. Pad Drains to Pad Basin at a 3% to 5% slope
4. BMP Selection and Position may change Depending on Actual Conditions Encountered During the Construction Process

**NOTE:**

Actual Equipment Layout and Reclaimed Pad Surface Area May Change due to Production Requirements or Site Conditions.

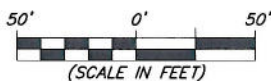
**ESTIMATED AREAS**  
**RECLAIMED AREA: 2.7 ACRES**  
**UNRECLAIMED AREA: 1.4 ACRES**

**LEGEND**

- SLASH = SLASH
- ST = SEDIMENT TRAP
- SedR = SEDIMENT RESERVOIR
- R.O.D. = RUN-ON DIVERSION
- PERMETER CONTROL (WATTLES)
- CSD = CUT SLOPE DIVERSION (BERM TOE OF CUT SLOPE)
- D = FILL DIVERSION TO SEDIMENT TRAP
- VGB = VEGETATION BUFFER (UNDISTURBED LAND INSIDE PC)
- FCD = FLOW CONTROL DITCH
- PAR = PAD/ACCESS ROAD INTERFACE
- LEVEL SPREADER
- TOE BERM (PLACED AT TOE OF ALL FILL SLOPES/STOCKPILES)
- TOPSOIL BERM
- SEED, EOB & FLEX
- SEED



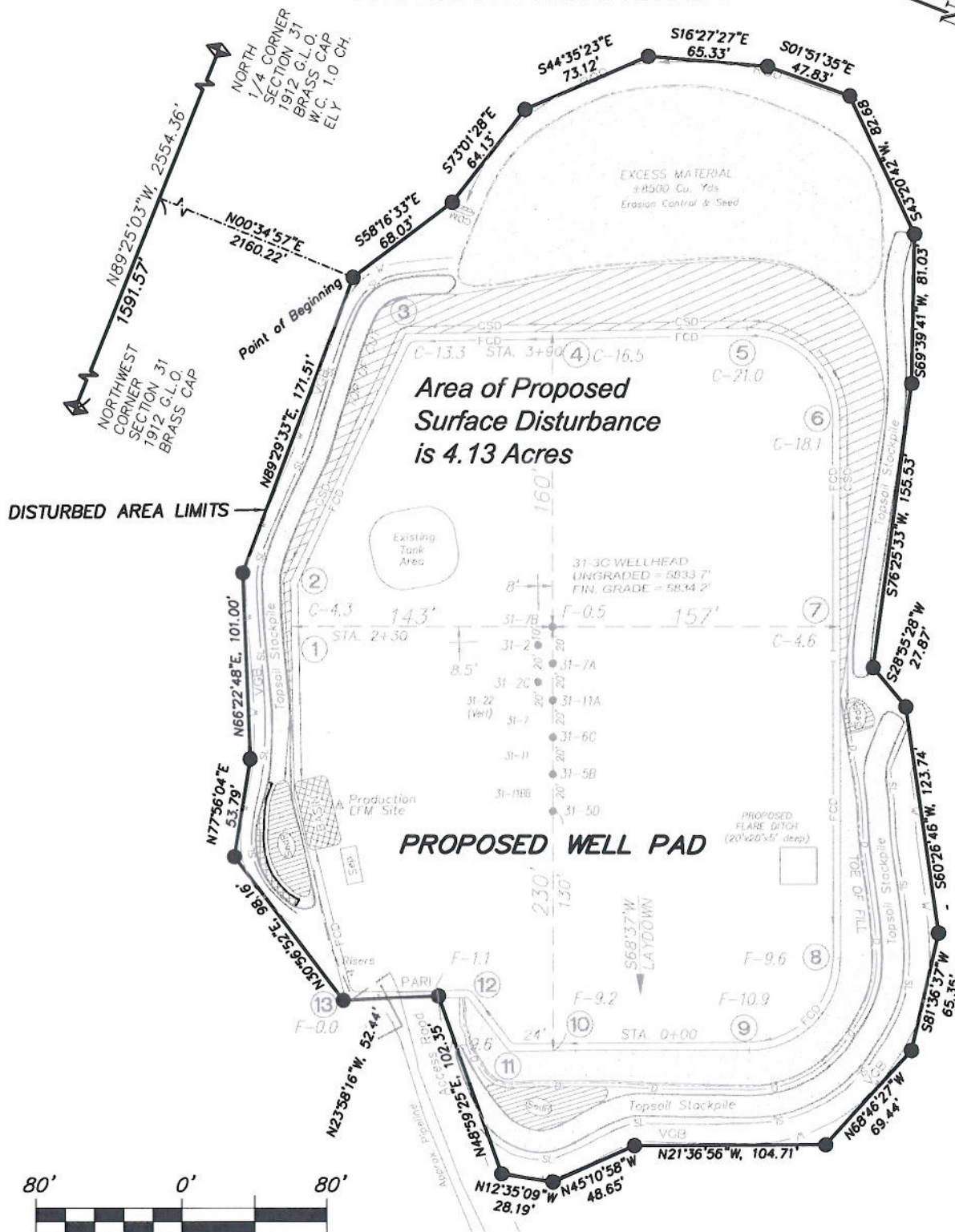
906 Main Street  
 Evanston, Wyoming 82930  
 Phone No. (307) 789-4545



<b>Production Schematic</b>		<b>Scale: 1" = 50'</b>
Project No.	10-04-17	Date Surveyed: 3/15/10
Date Drawn: 5/26/10	Latest Revision	Date: 12/15/10

**SHEET**  
**6**  
**OF 10**

**EnCana Oil & Gas (USA) Inc.**  
**Well Pad (PF-31)**  
**Section 31, T7S, R95W, 6th P.M.**  
**SURFACE DISTURBANCE AREA**



906 Main Street  
 Evanston, Wyoming 82930  
 Phone No. (307) 789-4545

Surface Disturbance		Scale: 1" = 80'	SHEET <b>7</b> OF 10
Project No.	10-04-17	Date Surveyed: 3/15/10	
Date Drawn:	5/26/10	Latest Revision Date: 12/15/10	