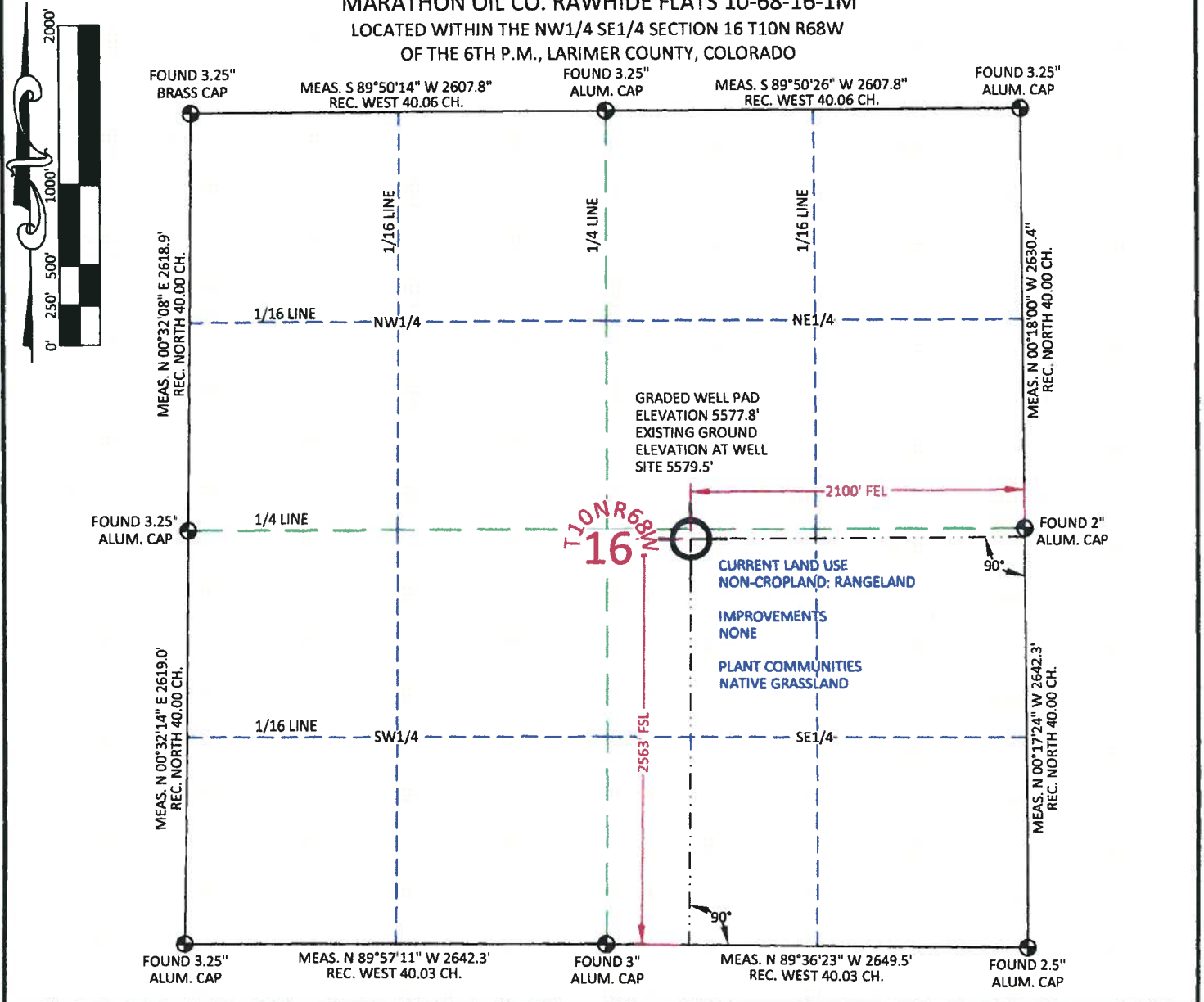


# MARATHON OIL CO. RAWHIDE FLATS 10-68-16-1M

LOCATED WITHIN THE NW1/4 SE1/4 SECTION 16 T10N R68W  
OF THE 6TH P.M., LARIMER COUNTY, COLORADO



## MONITOR WELL LOCATION

GEOGRAPHIC	LAT.	40.833938°
	LONG.	105.007840°
DEC. DEG.	LAT.	40.833956°
	LONG.	105.007312°
STATE PLANE	LAT.	40°50'02.18"
	LONG.	105°00'28.22"
CO. NORTH	LAT.	40°50'02.24"
	LONG.	105°00'26.32"
NAD 27	NORTH	1547029.80
	EAST	3136193.50
NAD 83	NORTH	547027.10
	EAST	2136343.35
FOOTAGE: 2100' FEL - 2563' FSL		
GROUND ELEV. 5579.5'		
INST. OPRTR. ALEC THOMAS		
MEASURE DATE: 12/23/2010		
PDOP: 1.826		

I, William H. Dolinar, Professional Land Surveyor, CO. RLS # 38070 hereby certify that (in accordance with a request from Anna Walls with Marathon Oil Co, 5555 San Felipe, Houston, TX 77056) I and or personnel under my direction made a survey on the 22nd day of January 2011, for the Monitoring Well Location and Elevation of Marathon Oil Co. RAWHIDE FLATS 10-68-16-1M being located within the NW1/4 SE1/4 Section 16, T10N R68W, of the 6th P.M., Larimer County, State of Colorado.

- All bearings and distances are GRID based on the Colorado State Plane Coordinate System, North Zone, North American Datum 1983 from GPS observations occupying a WHS control point (5/8" rebar) and having the Location and Elevation derived from an Opus Solution.
- Vertical Datum used is of NAVD 88.
- Record Bearings and Distances as shown are based on the General Land Office Survey plat approved on the 16th day of December 1872.

### CONFIDENTIALITY NOTES:

The information contained in this plot is legally privileged and confidential information intended only for the use of the recipients. If you are not the intended recipients, you are hereby notified that any use, dissemination, distribution or copying of this information is strictly prohibited.



## WILLIAM H. SMITH & ASSOCIATES P.C.

SURVEYING CONSULTANTS  
50 EAST SECOND NORTH PHONE: 307-875-3638  
GREEN RIVER, WY 307-875-3639  
www.whsmithpc.com

### LEGEND

- FOUND CORNER
- ⊗ CALCULATED CORNER
- NOTHING FOUND

### LOCATION:

RAWHIDE FLATS 10-68-16-1M  
WITHIN THE NW1/4  
SE1/4 SECTION 16,  
T 10 N, R 68 W,  
6TH P.M.  
LARIMER COUNTY,  
COLORADO

### MARATHON OIL COMPANY

PO BOX 3128, HOUSTON TX, 77253  
5555 SAN FELIPE, HOUSTON TX, 77056

### MONITORING WELL PLAT

SCALE: 1"=1000'  
DATE: 01/26/2011  
EXHIBIT "A"  
SHEET 1 OF 1

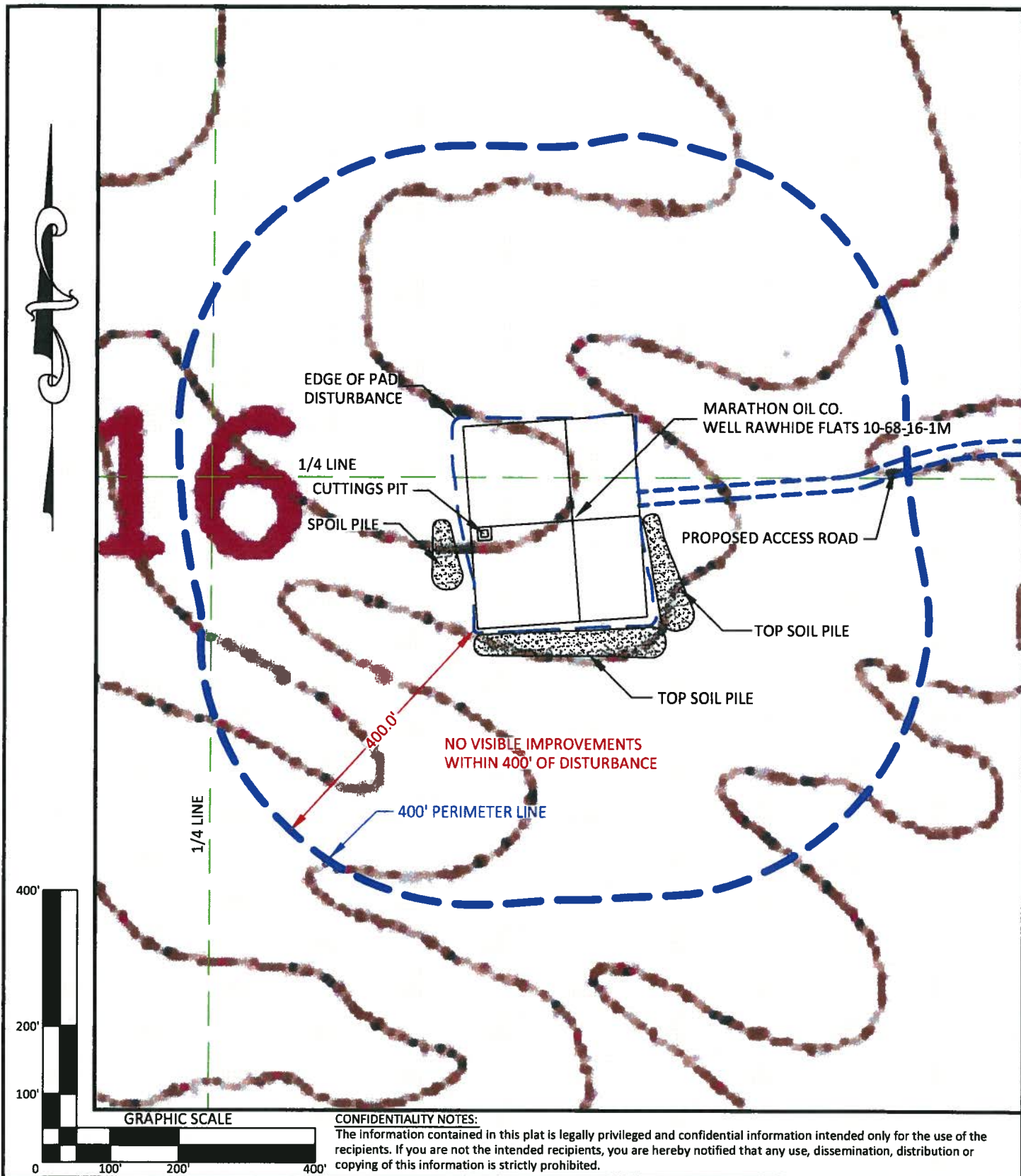
DRAWN BY: CED

CHECKED BY: WHD

PROJECT NO: 1068161M

JOB NO: 2011001

REVISIONS:



#### CONFIDENTIALITY NOTES:

The information contained in this plat is legally privileged and confidential information intended only for the use of the recipients. If you are not the intended recipients, you are hereby notified that any use, dissemination, distribution or copying of this information is strictly prohibited.



**WILLIAM H. SMITH  
& ASSOCIATES P.C.**

**SURVEYING CONSULTANTS**  
150 EAST SECOND NORTH  
GREEN RIVER, WY  
PHONE: 307-875-3638  
307-875-3639  
www.whsmithpc.com

DRAWN BY: CED

CHECKED BY: WHD

PROJECT NO: 1068161M

JOB NO: 2011001

REVISIONS:

#### LEGEND

400' PERIMETER ———  
O.H.P. ———  
PROPOSED ACCESS ———  
EXISTING 2-TRACK ———  
SECTION LINE ———  
1/16 LINE ———

#### LOCATION:

RAWHIDE FLATS  
10-68-16-1M  
WITHIN THE NW/4  
SE/4 SECTION 16,  
T 10 N, R 68 W,  
6TH PM.  
LARIMER COUNTY,  
COLORADO

**MARATHON OIL COMPANY**  
PO BOX 3128, HOUSTON TX, 77253  
5555 SAN FELIPE, HOUSTON TX, 77056

#### LOCATION DRAWING

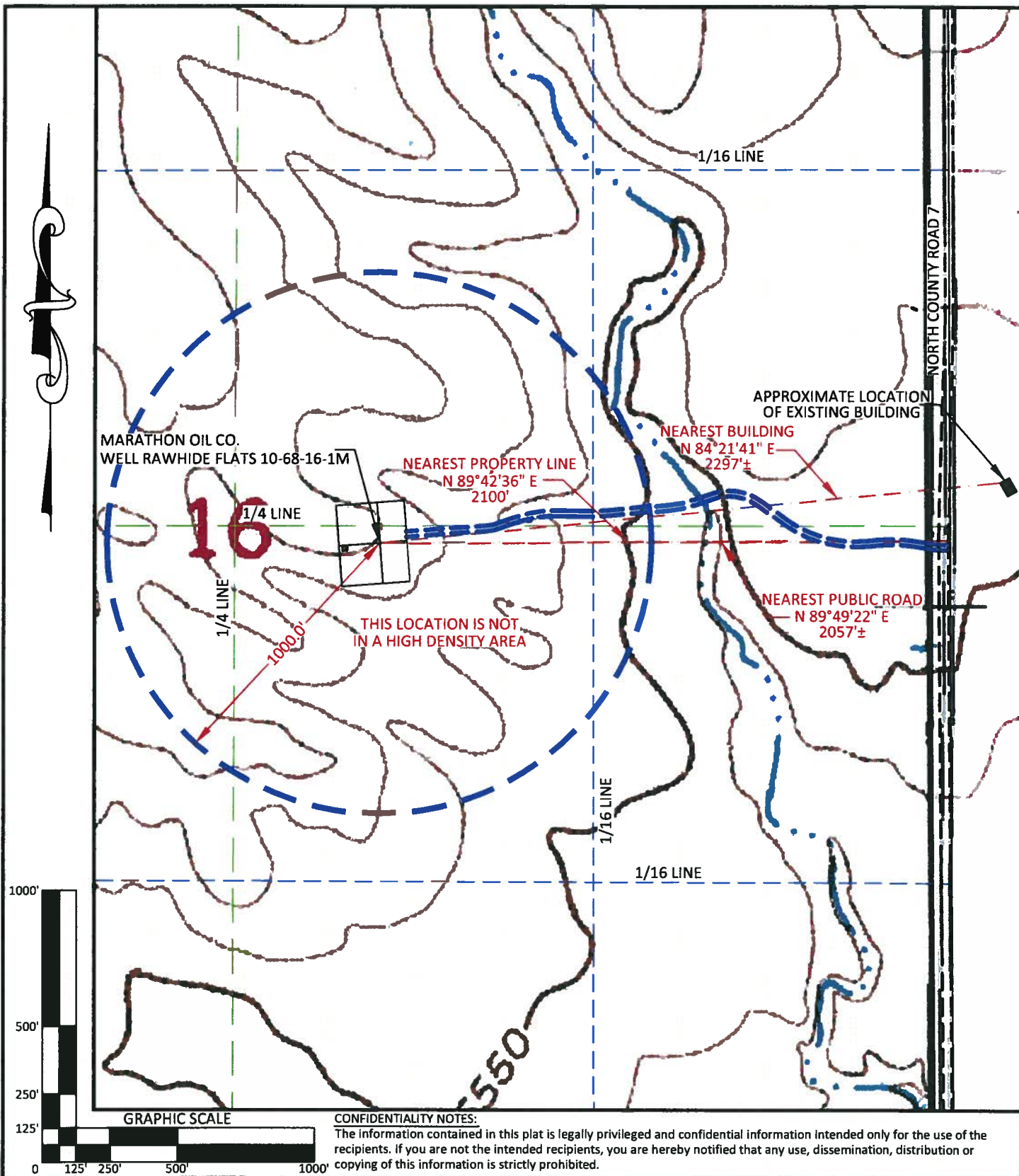
SCALE: 1"=200'

EXHIBIT "C"

DATE: 02/16/2011

SHEET 2 OF 10





#### CONFIDENTIALITY NOTES:

The information contained in this plat is legally privileged and confidential information intended only for the use of the recipients. If you are not the intended recipients, you are hereby notified that any use, dissemination, distribution or copying of this information is strictly prohibited.



**WILLIAM H. SMITH  
& ASSOCIATES P.C.**

**SURVEYING CONSULTANTS**  
150 EAST SECOND NORTH PHONE: 307-875-3638  
GREEN RIVER, WY 307-875-3639  
www.whsmithpc.com

DRAWN BY: CED

CHECKED BY: WHD

PROJECT NO: 1068161M

JOB NO: 2011001

REVISIONS:

#### LEGEND

1000' RADIUS  
O.H.P.

PROPOSED ACCESS  
EXISTING 2-TRACK  
EXISTING ROAD  
SECTION LINE  
1/16 LINE



#### LOCATION:

RAWHIDE FLATS  
10-68-16-1M  
WITHIN THE NW/4  
SE/4 SECTION 16,  
T 10 N, R 68 W,  
6TH PM.  
LARIMER COUNTY,  
COLORADO

**MARATHON OIL COMPANY**  
PO BOX 3128, HOUSTON TX, 77253  
5555 SAN FELIPE, HOUSTON TX, 77056

#### CULTURE MAP

SCALE: 1"=500'

EXHIBIT "H"

DATE: 02/16/2011

SHEET 7 OF 10