

BP AMERICA PROD CO-SORAC/NAG EBIZ
DO NOT MAIL - PO BOX 22024
TULSA, Oklahoma

McCarville GU C 4

H & P Drilling/H & P/291

Post Job Summary

Cement Production Casing

Prepared for: Igor Galperin
Date Prepared: 8/11/09

Version: 1

Service Supervisor: ETCITY, JERRY

Submitted by: Jeff Bergman

HALLIBURTON

The Road to Excellence Starts with Safety

Sold To #: 358135		Ship To #: 2738780		Quote #:		Sales Order #: 6824723	
Customer: BP AMERICA PROD CO-SORAC/NAG EBIZ				Customer Rep: Galperin, Igor			
Well Name: McCarville GU C			Well #: 4			API/UWI #:	
Field:		City (SAP): TULSA		County/Parish:		State: Oklahoma	
Legal Description: Section 23 Township 33N Range 9W							
Contractor: H & P Drilling			Rig/Platform Name/Num: H & P 291				
Job Purpose: Cement Production Casing							
Well Type: Development Well			Job Type: Cement Production Casing				
Sales Person: BERGMAN, JEFFREY			Srvc Supervisor: ETCITTY, JERRY			MBU ID Emp #: 227876	

Job Personnel

HES Emp Name	Exp Hrs	Emp #	HES Emp Name	Exp Hrs	Emp #	HES Emp Name	Exp Hrs	Emp #
BERGMAN, JEFFREY James		392893	BROWNE, SHANNA L		405262	ETCITTY, JERRY		227876
KOURIM, DUSTIN J		433766	OCHOA, SELINA Irene		367281	REA, WADE Hammond		459536

Equipment

HES Unit #	Distance-1 way	HES Unit #	Distance-1 way	HES Unit #	Distance-1 way	HES Unit #	Distance-1 way
10025024	65 mile	10025031	65 mile	10724579	65 mile	10741115	65 mile
10823383	65 mile	11164597	65 mile				

Job Hours

Date	On Location Hours	Operating Hours	Date	On Location Hours	Operating Hours	Date	On Location Hours	Operating Hours

TOTAL Total is the sum of each column separately

Job

Formation Name				Job Times			
Formation Depth (MD)	Top	Bottom		Called Out	Date	Time	Time Zone
Form Type		BHST		On Location	09 - Aug - 2009	08:15	MST
Job depth MD	3800.3 ft	Job Depth TVD	3800.3 ft	Job Started	09 - Aug - 2009	12:37	MST
Water Depth		Wk Ht Above Floor	4. ft	Job Completed	09 - Aug - 2009	14:10	MST
Perforation Depth (MD)	From	To		Departed Loc	09 - Aug - 2009	15:30	MST

Well Data

Description	New / Used	Max pressure psig	Size in	ID in	Weight lbm/ft	Thread	Grade	Top MD ft	Bottom MD ft	Top TVD ft	Bottom TVD ft
7 7/8 Open Hole				7.875				350.	2725.8	350.	
7 7/8 Open Hole				7.875				2725.8	3800.3		3339.
5 1/2 Production Casing	Unknown		5.5	4.95	15.5			.	3800.3	.	3339.
8 5/8 Surface Casing	Unknown		8.625	8.017	28.			.	350.		350.

Sales/Rental/3rd Party (HES)

Description	Qty	Qty uom	Depth	Supplier
PLUG,CMTG,BOT,5 1/2,HWE,4.38 MIN/5.09 MA	1	EA		
PLUG,CMTG,TOP,5 1/2,HWE,4.38 MIN/5.09 MA	1	EA		

Tools and Accessories

Type	Size	Qty	Make	Depth	Type	Size	Qty	Make	Depth	Type	Size	Qty	Make
Guide Shoe					Packer					Top Plug			
Float Shoe					Bridge Plug					Bottom Plug			
Float Collar					Retainer					SSR plug set			
Insert Float										Plug Container			
Stage Tool										Centralizers			

Miscellaneous Materials

Gelling Agt	Conc	Surfactant	Conc	Acid Type	Qty	Conc	%
-------------	------	------------	------	-----------	-----	------	---

Treatment Fld		Conc		Inhibitor		Conc		Sand Type		Size		Qty	
Fluid Data													
Stage/Plug #: 1													
Fluid #	Stage Type	Fluid Name	Qty	Qty uom	Mixing Density lbm/gal	Yield ft3/sk	Mix Fluid Gal/sk	Rate bbl/min	Total Mix Fluid Gal/sk				
1	Water		10	bbl	8.34	.0	.0	8.0					
2	SJ PRB II Scavenger	CMT - STANDARD TYPE III - FINE (100012229)	40	sacks	10.5	4.67	29.84		29.84				
	94 lbm	CMT - STANDARD TYPE III - FINE , BULK (100012229)											
	2 %	CAL-SEAL 60, 50 LB BAG (101217146)											
	2 %	ECONOLITE (100001580)											
	6 %	SALT, 100 LB BAG (100003652)											
	0.3 %	VERSASET, 55 LB SK (101376573)											
	0.125 lbm	POLY-E-FLAKE (101216940)											
	5 lbm	KOL-SEAL, 50 LB BAG (100064232)											
	0.3 %	D-AIR 3000 (101007446)											
	29.843 Gal	FRESH WATER											
3	SJ PRB II- Lead	CMT - STANDARD TYPE III - FINE (100012229)	220	sacks	11.5	2.99	18.15	8.0	18.15				
	94 lbm	CMT - STANDARD TYPE III - FINE , BULK (100012229)											
	2 %	CAL-SEAL 60, 50 LB BAG (101217146)											
	2 %	ECONOLITE (100001580)											
	6 %	SALT, 100 LB BAG (100003652)											
	0.3 %	VERSASET, 55 LB SK (101376573)											
	0.125 lbm	POLY-E-FLAKE (101216940)											
	5 lbm	KOL-SEAL, 50 LB BAG (100064232)											
	0.3 %	D-AIR 3000 (101007446)											
	18.147 Gal	FRESH WATER											
4	SJ PRB II- Tail	CMT - STANDARD TYPE III - FINE (100012229)	110	sacks	13.5	1.83	9.05	8.0	9.05				
	94 lbm	CMT - STANDARD TYPE III - FINE , BULK (100012229)											
	2 %	CAL-SEAL 60, 50 LB BAG (101217146)											
	6 %	SALT, 100 LB BAG (100003652)											
	2 %	ECONOLITE (100001580)											
	0.125 lbm	POLY-E-FLAKE (101216940)											
	0.3 %	VERSASET, 55 LB SK (101376573)											
	5 lbm	KOL-SEAL, 50 LB BAG (100064232)											
	0.3 %	D-AIR 3000 (101007446)											
	9.054 Gal	FRESH WATER											
5	Water Displacement		89	bbl	8.34	.0	.0	8.0					
Calculated Values		Pressures		Volumes									
Displacement		Shut In: Instant		Lost Returns		Cement Slurry		Pad					
Top Of Cement		5 Min		Cement Returns		Actual Displacement		Treatment					
Frac Gradient		15 Min		Spacers		Load and Breakdown		Total Job					
Rates													
Circulating		Mixing		Displacement		Avg. Job							
Cement Left In Pipe	Amount	42 ft	Reason	Shoe Joint									
Frac Ring # 1 @	ID	Frac ring # 2 @	ID	Frac Ring # 3 @	ID	Frac Ring # 4 @	ID						
The Information Stated Herein Is Correct				Customer Representative Signature									

The Road to Excellence Starts with Safety

Sold To #: 358135	Ship To #: 2738780	Quote #:	Sales Order #: 6824723
Customer: BP AMERICA PROD CO-SORAC/NAG EBIZ		Customer Rep: Galperin, Igor	
Well Name: McCarville GU C		Well #: 4	API/UWI #:
Field:	City (SAP): TULSA	County/Parish:	State: Oklahoma
Legal Description: Section 23 Township 33N Range 9W			
Lat:		Long:	
Contractor: H & P Drilling		Rig/Platform Name/Num: H & P 291	
Job Purpose: Cement Production Casing			Ticket Amount:
Well Type: Development Well		Job Type: Cement Production Casing	
Sales Person: BERGMAN, JEFFREY		Srv Supervisor: ETCITY, JERRY	MBU ID Emp #: 227876

Activity Description	Date/Time	Cht #	Rate bbl/min	Volume bbl		Pressure psig		Comments
				Stage	Total	Tubing	Casing	
Depart Yard Safety Meeting	08/09/2009 06:00							
Arrive at Location from Service Center	08/09/2009 06:25							
Pre-Rig Up Safety Meeting	08/09/2009 08:00							
Rig-Up Equipment	08/09/2009 08:20							
Pre-Job Safety Meeting	08/09/2009 12:15							
Pressure Test	08/09/2009 12:34		0.5					PSI TST TO 250 THEN 3500 PSI.
Pump Spacer 1	08/09/2009 12:47		2	10			324.0	WATER AHEAD.
Pump Spacer 2	08/09/2009 12:54		5	26			409.0	SCAVENGER 40 SKS , YEILD 4.67 , MIXED AT #11.0
Pump Lead Cement	08/09/2009 13:04		5	117			311.0	220 SKS YEILD 2.99 , MIXED AT #11.5
Pump Tail Cement	08/09/2009 13:28		4	35.8			140.0	110 SKS YEILD 1.83 , MIXED AT #13.5
Drop Plug	08/09/2009 13:37							SHUTDOWN WASH LINES @ DROP PLUG
Pump Displacement	08/09/2009 13:39		6	89.3			73.0	PUMPED WATER , SLOWDOWN 2 BPM LAST 10 BBLS. [25 BBLS GOOD CMT TO PIT.]
Bump Plug	08/09/2009 14:04		2				1356.0	BUMPED PLUG @ HELD PSI 4 MINS.
Check Floats	08/09/2009 14:07							FLOATS HELD. .5 BBLS BACK.
End Job	08/09/2009 14:08							

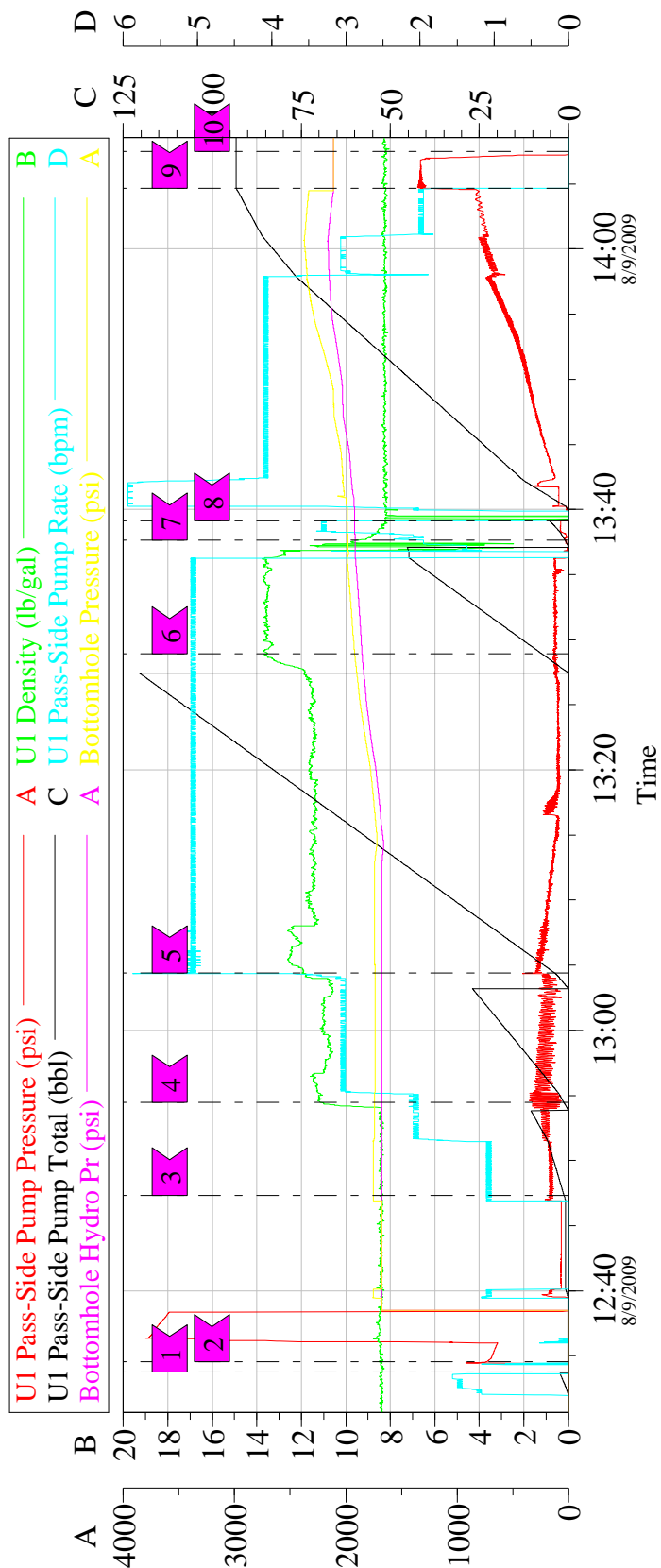
Cementing Job Log

Activity Description	Date/Time	Cht #	Rate bbl/ min	Volume bbl		Pressure psig		Comments
				Stage	Total	Tubing	Casing	
Pre-Rig Down Safety Meeting	08/09/2009 14:10							
Rig-Down Equipment	08/09/2009 14:25							
Start Job	08/09/2009 14:58							
Rig-Down Completed	08/09/2009 15:15							
Depart Location Safety Meeting	08/09/2009 15:30							
Depart Location for Service Center or Other Site	08/09/2009 15:45							

B.P. AMERICA
5.5 PRODUCTION

HALLIBURTON

Cementing Job Log



Local Event Log											
Maximum			UPPP	Maximum			UPPP				
1	START JOB	12:33:46	920.4	2	PSI TST	12:34:32	3799	3	SPACER 1	12:47:20	324.4
4	SCAVENGER	12:54:27	409.4	5	LEAD CMT	13:04:25	311.7	6	TAIL CMT	13:28:54	140.7
7	DROP PLUG	13:37:38	73.28	8	DISPLACE	13:39:09	1320	9	BUMP PLUG	14:04:40	1356
10	END JOB	14:07:31	-1.954								

Customer: BP AMERICA PRODUCTION COMPANY	Job Date: 09-Aug-2009	Sales Order #: 6824723
Well Description: McCarville GU C #4		

OptiCem v6.4.1
09-Aug-09 14:32