
OXY GRAND JUNCTION EBUSINESS

**SHELL 797-03-23A
GRAND VALLEY
Garfield County , Colorado**

Cement Surface Casing
05-Nov-2010

Post Job Report

The Road to Excellence Starts with Safety

Sold To #: 344034		Ship To #: 2817602		Quote #:		Sales Order #: 7753436					
Customer: OXY GRAND JUNCTION EBUSINESS				Customer Rep: LONG, CODY							
Well Name: SHELL			Well #: 797-03-23A			API/UWI #: 05-045-17890					
Field: GRAND VALLEY		City (SAP): PARACHUTE		County/Parish: Garfield		State: Colorado					
Lat: N 39.478 deg. OR N 39 deg. 28 min. 42.15 secs.				Long: W 108.202 deg. OR W -109 deg. 47 min. 52.879 secs.							
Contractor: NABORS M-37			Rig/Platform Name/Num: NABORS M-37								
Job Purpose: Cement Surface Casing											
Well Type: Development Well					Job Type: Cement Surface Casing						
Sales Person: DUNNING, DUSTIN				Srvc Supervisor: LEIST, JAMES			MBU ID Emp #: 362787				
Job Personnel											
HES Emp Name	Exp Hrs	Emp #	HES Emp Name	Exp Hrs	Emp #	HES Emp Name	Exp Hrs	Emp #			
GAMBLE, BENJAMIN T	3	446666	HUGENTOBLER, LOGAN Mark	3	447333	LEIST, JAMES R	5	362787			
LYNCH, JACK William	5	483039	SLAUGHTER, JESSE Dean	5	454315						
Equipment											
HES Unit #	<i>Distance-1 way</i>	HES Unit #	<i>Distance-1 way</i>	HES Unit #	<i>Distance-1 way</i>	HES Unit #	<i>Distance-1 way</i>				
10713212	80 mile	10872429	80 mile	11259882	80 mile	11360883	80 mile				
Job Hours											
Date	<i>On Location Hours</i>	Operating Hours	Date	<i>On Location Hours</i>	Operating Hours	Date	<i>On Location Hours</i>	Operating Hours			
11-5-10	16	5									
TOTAL			<i>Total is the sum of each column separately</i>								
Job					Job Times						
Formation Name					Date		Time	Time Zone			
Formation Depth (MD)	Top	Bottom			Called Out	05 - Nov - 2010	00:30	MST			
Form Type	BHST				On Location	05 - Nov - 2010	05:20	MST			
Job depth MD	1311. ft	Job Depth TVD	1311. ft	Job Started	05 - Nov - 2010	18:35	MST				
Water Depth	Wk Ht Above Floor		4. ft	Job Completed	05 - Nov - 2010	19:58	MST				
Perforation Depth (MD)	<i>From</i>	<i>To</i>			Departed Loc	05 - Nov - 2010	22:00	MST			
Well Data											
<i>Description</i>	New / Used	Max pressure psig	Size in	ID in	Weight lbm/ft	Thread	Grade	Top MD ft	Bottom MD ft	Top TVD ft	Bottom TVD ft
Sales/Rental/3rd Party (HES)											
Description					Qty	Qty uom	Depth	Supplier			
PLUG,CMTG, TOP, 9 5/8, HWE, 8.16 MIN/9.06 MA					1	EA					
R/A DENSOMETER W/CHART RECORDER, /JOB, ZI					1	JOB					
PORT. DATA ACQUIS. W/OPTICEM RT W/HES					1	EA					
ADC (AUTO DENSITY CTRL) SYS, /JOB, ZI					1	JOB					
Tools and Accessories											
Type	Size	Qty	Make	Depth	Type	Size	Qty	Make			
Guide Shoe					Packer						
Float Shoe					Top Plug	9.625	1				
Float Collar					Bridge Plug						
Insert Float					Retainer						
Stage Tool					Bottom Plug						
					SSR plug set						
					Plug Container	9.625	1				
					Centralizers						
Miscellaneous Materials											
Gelling Agt		Conc		Surfactant		Conc		Acid Type		Qty	Conc %
Treatment Fld		Conc		Inhibitor		Conc		Sand Type		Size	Qty

Fluid Data									
Stage/Plug #: 1									
Fluid #	Stage Type	Fluid Name	Qty	Qty uom	Mixing Density lbm/gal	Yield ft ³ /sk	Mix Fluid Gal/sk	Rate bbl/min	Total Mix Fluid Gal/sk
1	Water Spacer		20.00	bbl	8.33	.0	.0	.0	
2	Gel Spacer		0.00	bbl	.	.0	.0	.0	
3	Water Spacer		20.00	bbl	.	.0	.0	.0	
4	Lead Cement	VERSACEM (TM) SYSTEM (452010)	200.0	sacks	12.3	2.38	13.75		
5	Tail Cement	SWIFTCEM (TM) SYSTEM (452990)	80.0	sacks	14.2	1.43	6.88		6.88
6.88 Gal		FRESH WATER							
6	Displacement		97.00	bbl	.	.0	.0	.0	
Calculated Values		Pressures		Volumes					
Displacement	97	Shut In: Instant		Lost Returns	0	Cement Slurry	104	Pad	
Top Of Cement	SURFACE	5 Min		Cement Returns	40	Actual Displacement	97	Treatment	
Frac Gradient		15 Min		Spacers	60	Load and Breakdown		Total Job	
Rates									
Circulating		Mixing	5	Displacement	5	Avg. Job	5		
Cement Left In Pipe	Amount	45.13 ft	Reason	Shoe Joint					
Frac Ring # 1 @	ID	Frac ring # 2 @	ID	Frac Ring # 3 @	ID	Frac Ring # 4 @	ID		
The Information Stated Herein Is Correct				Customer Representative Signature					

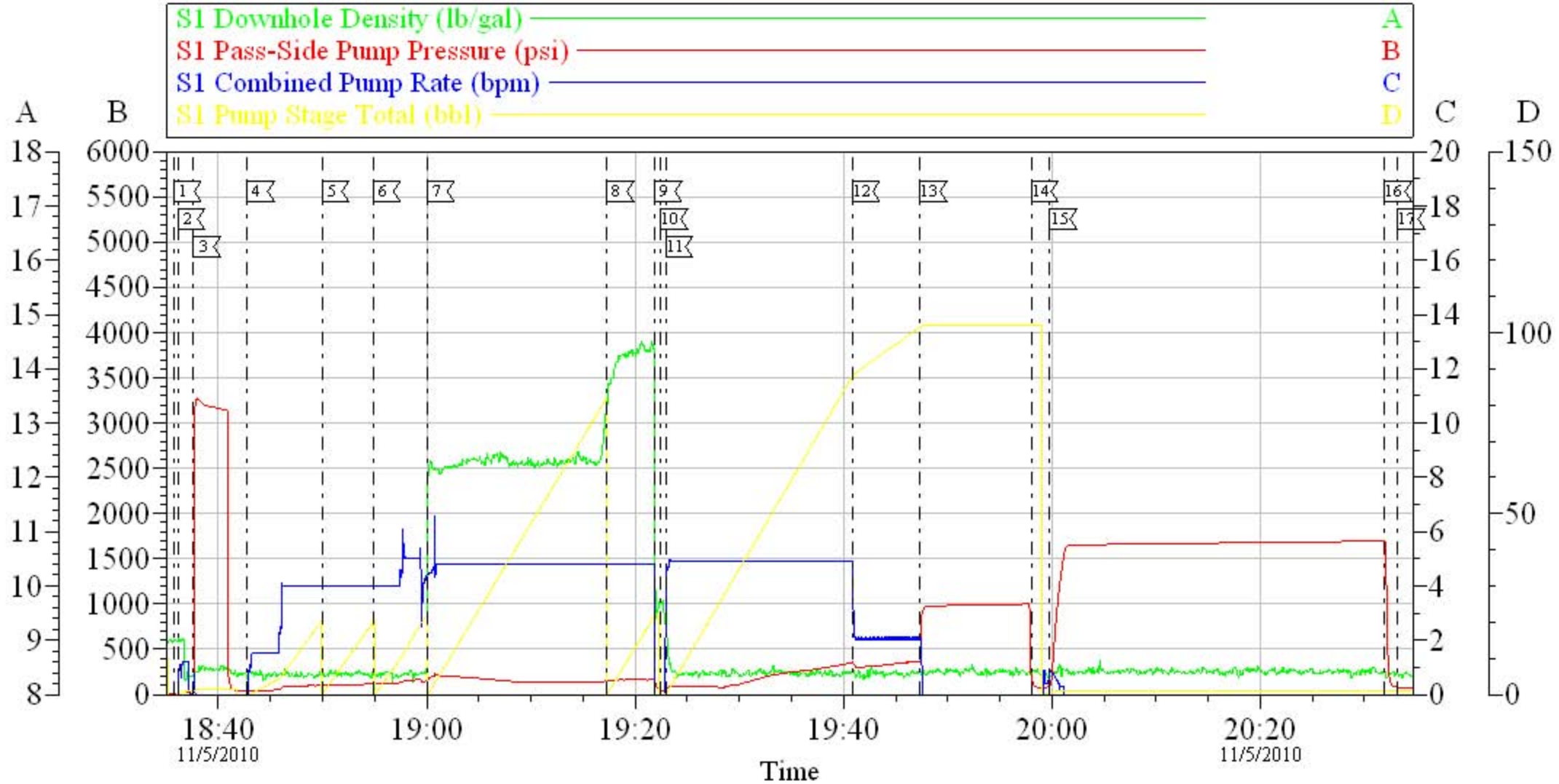
The Road to Excellence Starts with Safety

Sold To #: 344034	Ship To #: 2817602	Quote #:	Sales Order #: 7753436
Customer: OXY GRAND JUNCTION EBUSINESS		Customer Rep: LONG, CODY	
Well Name: SHELL		Well #: 797-03-23A	API/UWI #: 05-045-17890
Field: GRAND VALLEY	City (SAP): PARACHUTE	County/Parish: Garfield	State: Colorado
Legal Description:			
Lat: N 39.478 deg. OR N 39 deg. 28 min. 42.15 secs.		Long: W 108.202 deg. OR W -109 deg. 47 min. 52.879 secs.	
Contractor: NABORS M-37		Rig/Platform Name/Num: NABORS M-37	
Job Purpose: Cement Surface Casing			Ticket Amount:
Well Type: Development Well		Job Type: Cement Surface Casing	
Sales Person: DUNNING, DUSTIN		Srvc Supervisor: LEIST, JAMES	MBU ID Emp #: 362787

Activity Description	Date/Time	Cht #	Rate bbl/min	Volume bbl		Pressure psig		Comments
				Stage	Total	Tubing	Casing	
Call Out	11/05/2010 00:30							TP-1311 FT., TD-1335 FT., S.J.-45.13 FT., HOLE- 12 1/4, MUD#- 8.9, YP-16, PV-15, TEMP-92
Pre-Convoy Safety Meeting	11/05/2010 03:00							WITH ALL HES PERSONNEL
Crew Leave Yard	11/05/2010 03:30							RIG CIRULATED A TOTAL OF 5 HOURS PRIOR TO CMT JOB AT 60 SKS/MIN WITH 221 PSI
Arrive At Loc	11/05/2010 05:20							RUNNING CASING, RIG WASHED DOWN MOST OF THE JOINTS LANDED OUT CASING AT 1230
Assessment Of Location Safety Meeting	11/05/2010 12:00							WITH ALL HES PERSONNEL
Pre-Rig Up Safety Meeting	11/05/2010 12:20							WITH ALL HES PERSONNEL
Rig-Up Completed	11/05/2010 13:30							RIG UP WITH ELITE 7 AND COULD NOT PRESSURE TEST CALLED FOR ELITE 1, RIG WAITED ON HES FOR 3 HOURS, RIG CIRULATED WHILE WAITING
Pre-Job Safety Meeting	11/05/2010 18:20							WITH ALL ON LOCATION PERSONNEL
Start Job	11/05/2010 18:35							GOOD CIRULATION THROUGHOUT JOB, NO PIPE MOVEMENT DURING JOB

Activity Description	Date/Time	Cht #	Rate bbl/min	Volume bbl		Pressure psig		Comments
				Stage	Total	Tubing	Casing	
Pressure Test	11/05/2010 18:37							3268 PSI
Pump Spacer 1	11/05/2010 18:42		4	20			90.0	FRESH WATER
Pump Spacer 1	11/05/2010 18:49		4	20			103.0	GEL SPACER 3 GAL LGC IN 20 BBLS FRESH WATER
Pump Spacer 1	11/05/2010 18:54		4	20			110.0	FRESH WATER
Pump Lead Cement	11/05/2010 19:00		5	84.7			199.0	200 SKS, 12.3 PPG, 2.38 FT3/SK, 13.75 GAL/SK
Pump Tail Cement	11/05/2010 19:17		5	20.4			149.0	80 SKS, 14.2 PPG, 1.43 FT3/SK, 6.88 GAL/SK
Shutdown	11/05/2010 19:21							
Drop Top Plug	11/05/2010 19:22							AWAY
Pump Displacement	11/05/2010 19:22		5	97.8			312.0	FRESH WATER, 40 BBLS CMT TO SURFACE
Slow Rate	11/05/2010 19:40		2	87.8			299.0	TO BUMP PLUG
Bump Plug	11/05/2010 19:47		2	97.8			382.0	PLUG BUMPED
Check Floats	11/05/2010 19:58						900.0	THE FLOATS ARE HOLDING
Comment	11/05/2010 20:00						1600. 0	CASING TEST FOR 30 MINS
End Job	11/05/2010 20:30							
Pre-Rig Down Safety Meeting	11/05/2010 20:45							WITH ALL HES PERSONNEL
Rig-Down Completed	11/05/2010 21:30							
Pre-Convoy Safety Meeting	11/05/2010 21:45							WITH ALL HES PERSONNEL
Crew Leave Location	11/05/2010 22:00							
Comment	11/05/2010 22:00							THANKYOU FOR USING HALLIBURTON CEMENT, JAMES LEIST AND CREW

OXY 9 5/8 SURFACE



Local Event Log								
1	START JOB	18:35:46	2	FILL LINES	18:36:06	3	PRESSURE TEST	18:37:38
4	PUMP H2O SPACER	18:42:48	5	PUMP GEL SPACER	18:49:57	6	PUMP H2O SPACER	18:54:53
7	PUMP LEAD CMT	19:00:03	8	PUMP TAIL CMT	19:17:18	9	SHUTDOWN	19:21:53
10	DROP TOP PLUG	19:22:28	11	PUMP DISPLACEMENT	19:22:55	12	SLOW RATE	19:40:53
13	BUMP PLUG	19:47:20	14	CHECK FLOATS	19:58:01	15	CASING TEST	19:59:49
16	RELEASE PSI	20:31:57	17	END JOB	20:33:12			

Customer: OXY
Well Description: SHELL 797-03-23A
Company Rep: CODY LONG

Job Date: 05-Nov-2010
Job Type: SURFACE
Cement Supervisor: JAMES LEIST

Sales Order #: 7753436
ADC Used: YES
Elite #1: LOGAN HUGENTOBLER

HALLIBURTON
OptiCern v6.3.4
05-Nov-10 20:34