

---

**OXY GRAND JUNCTION EBUSINESS**

---

**SHELL 797-03-15A  
GRAND VALLEY  
Garfield County , Colorado**

**Cement Surface Casing  
05-Oct-2010**

**Post Job Report**

*The Road to Excellence Starts with Safety*

<b>Sold To #:</b> 344034	<b>Ship To #:</b> 2810934	<b>Quote #:</b>	<b>Sales Order #:</b> 7683295
<b>Customer:</b> OXY GRAND JUNCTION EBUSINESS		<b>Customer Rep:</b> Goddeyene, Andy	
<b>Well Name:</b> SHELL		<b>Well #:</b> 797-03-15A	<b>API/UWI #:</b> 05-045-17878
<b>Field:</b> GRAND VALLEY	<b>City (SAP):</b> PARACHUTE	<b>County/Parish:</b> Garfield	<b>State:</b> Colorado
<b>Legal Description:</b>			
<b>Lat:</b> N 39.478 deg. OR N 39 deg. 28 min. 42.24 secs.		<b>Long:</b> W 108.505 deg. OR W -109 deg. 29 min. 41.96 secs.	
<b>Contractor:</b> Nabors Drilling		<b>Rig/Platform Name/Num:</b> M-37	
<b>Job Purpose:</b> Cement Surface Casing			<b>Ticket Amount:</b>
<b>Well Type:</b> Development Well		<b>Job Type:</b> Cement Surface Casing	
<b>Sales Person:</b> DUNNING, DUSTIN		<b>Srvc Supervisor:</b> REEVES, BRANDON	<b>MBU ID Emp #:</b> 287883

Activity Description	Date/Time	Cht #	Rate bbl/min	Volume bbl		Pressure psig		Comments
				Stage	Total	Tubing	Casing	
Call Out	10/05/2010 07:30							
Pre-Convoy Safety Meeting	10/05/2010 09:45							
Arrive at Location from Service Center	10/05/2010 11:10							
Assessment Of Location Safety Meeting	10/05/2010 15:00							
Other	10/05/2010 15:10							SPOT EQUIPMENT
Pre-Rig Up Safety Meeting	10/05/2010 15:20							
Rig-Up Equipment	10/05/2010 15:30							
Pre-Job Safety Meeting	10/05/2010 16:00							
Start Job	10/05/2010 16:18							TD-1030' TP-1010' SJ-43.37' MW-8.8# HOLE-12 1/4" CASING-9 5/8" 36#
Test Lines	10/05/2010 16:20						2700.0	
Pump Spacer 1	10/05/2010 16:22		4	10			110.0	FRESH WATER SPACER
Pump Spacer 2	10/05/2010 16:25		4	20			90.0	GELLED WATER SPACER
Pump Spacer 1	10/05/2010 16:32		5.5	10			200.0	FRESH WATER SPACER
Pump Lead Cement	10/05/2010 16:34		5.5	66.1			270.0	156 SKS. @ 12.3# 2.38 YIELD 13.77 WRQ.
Pump Tail Cement	10/05/2010 16:46		5.5	23.9			290.0	94 SKS. @ 14.2# 1.43 YIELD 6.85 WRQ.
Drop Top Plug	10/05/2010 16:52							
Pump Displacement	10/05/2010 16:53		6				325.0	FRESH WATER DISPLACEMENT

Activity Description	Date/Time	Cht #	Rate bbl/min	Volume bbl		Pressure psig		Comments
				Stage	Total	Tubing	Casing	
Slow Rate	10/05/2010 17:06		2	64			280.0	
Bump Plug	10/05/2010 17:11		2	74			700.0	PLUG LANDED LANDED THE PLUG AT 280 PSI. PRESSURED UP TO 700 PSI.
Check Floats	10/05/2010 17:14							FLOATS HELD
Pressure Test	10/05/2010 17:16		1	0.5			900.0	PRESSURE TEST THE CASING AT 900 PSI.
Release Casing Pressure	10/05/2010 17:26							
End Job	10/05/2010 17:27							WELL CIRCULATED BEFORE STARTING THE JOB. GOOD CIRCULATION THROUGHOUT THE JOB. PIPE WAS NOT RECIPROCATED. CIRCULATED 20 BBLs. OF CEMENT TO SURFACE.
Rig-Down Equipment	10/05/2010 17:37							THANKS FOR USING HALLIBURTON. BRANDON REEVES AND CREW.

*The Road to Excellence Starts with Safety*

<b>Sold To #:</b> 344034	<b>Ship To #:</b> 2810934	<b>Quote #:</b>	<b>Sales Order #:</b> 7683295
<b>Customer:</b> OXY GRAND JUNCTION EBUSINESS		<b>Customer Rep:</b> Goddeyene, Andy	
<b>Well Name:</b> SHELL		<b>Well #:</b> 797-03-15A	<b>API/UWI #:</b> 05-045-17878
<b>Field:</b> GRAND VALLEY	<b>City (SAP):</b> PARACHUTE	<b>County/Parish:</b> Garfield	<b>State:</b> Colorado
<b>Lat:</b> N 39.478 deg. OR N 39 deg. 28 min. 42.24 secs.		<b>Long:</b> W 108.505 deg. OR W -109 deg. 29 min. 41.96 secs.	
<b>Contractor:</b> Nabors Drilling		<b>Rig/Platform Name/Num:</b> M-37	
<b>Job Purpose:</b> Cement Surface Casing			
<b>Well Type:</b> Development Well		<b>Job Type:</b> Cement Surface Casing	
<b>Sales Person:</b> DUNNING, DUSTIN		<b>Srvc Supervisor:</b> REEVES, BRANDON	<b>MBU ID Emp #:</b> 287883

**Job Personnel**

HES Emp Name	Exp Hrs	Emp #	HES Emp Name	Exp Hrs	Emp #	HES Emp Name	Exp Hrs	Emp #
CHASTAIN, DERICK Allan	7	455848	DUBON, TODD N	7	443351	REEVES, BRANDON W	7	287883
YUTZY, BRIAN Matthew	7	478510						

**Equipment**

HES Unit #	Distance-1 way	HES Unit #	Distance-1 way	HES Unit #	Distance-1 way	HES Unit #	Distance-1 way
10000394	80 mile	10744648C	80 mile	10867322	80 mile	10998508	80 mile
10998512	80 mile	11259883	80 mile				

**Job Hours**

Date	On Location Hours	Operating Hours	Date	On Location Hours	Operating Hours	Date	On Location Hours	Operating Hours
10/05/2010	7	2						

**TOTAL** Total is the sum of each column separately

**Job**

**Job Times**

Formation Name	Job			Date	Time	Time Zone	
Formation Depth (MD)	Top	Bottom	Called Out	05 - Oct - 2010	07:30	MST	
Form Type	BHST			On Location	05 - Oct - 2010	11:10	MST
Job depth MD	1010. ft	Job Depth TVD	1010. ft	Job Started	05 - Oct - 2010	16:18	MST
Water Depth		Wk Ht Above Floor	4. ft	Job Completed	05 - Oct - 2010	17:27	MST
Perforation Depth (MD)	From	To	Departed Loc				

**Well Data**

Description	New / Used	Max pressure psig	Size in	ID in	Weight lbm/ft	Thread	Grade	Top MD ft	Bottom MD ft	Top TVD ft	Bottom TVD ft
-------------	------------	-------------------	---------	-------	---------------	--------	-------	-----------	--------------	------------	---------------

**Sales/Rental/3<sup>rd</sup> Party (HES)**

Description	Qty	Qty uom	Depth	Supplier
PLUG,CMTG, TOP, 9 5/8, HWE, 8.16 MIN/9.06 MA	1	EA		
R/A DENSOMETER W/CHART RECORDER, /JOB, ZI	1	JOB		
PORT. DATA ACQUIS. W/OPTICEM RT W/HES	1	EA		
ADC (AUTO DENSITY CTRL) SYS, /JOB, ZI	1	JOB		

**Tools and Accessories**

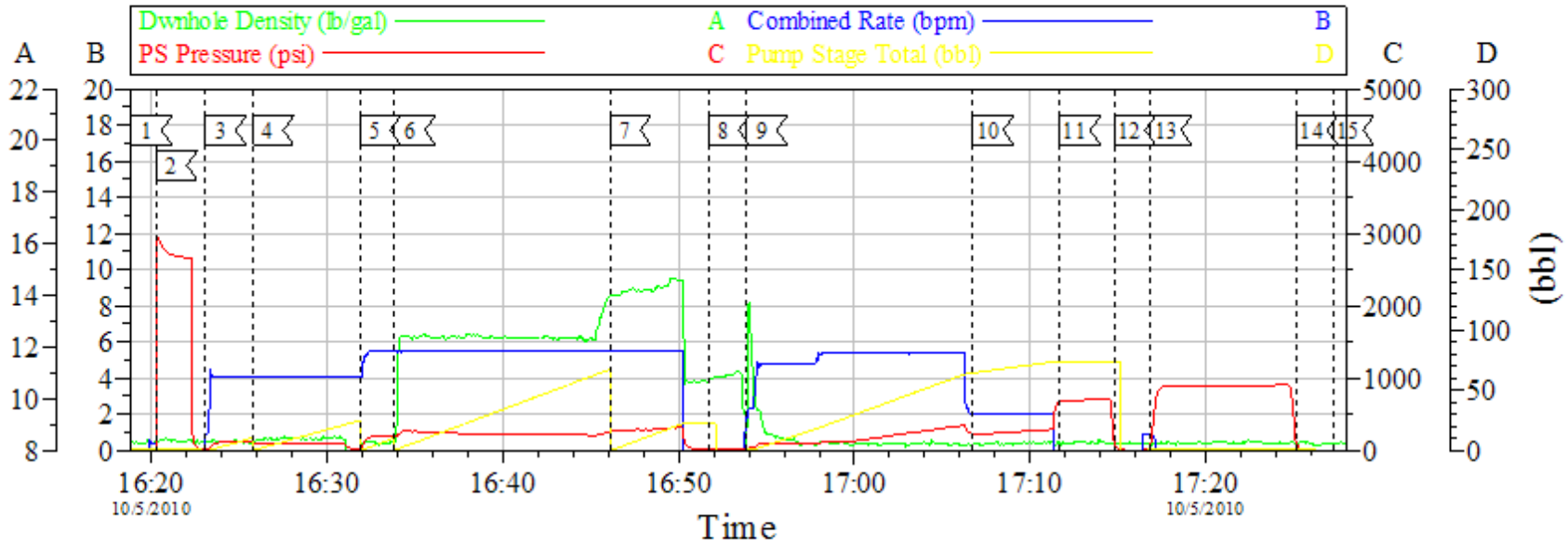
Type	Size	Qty	Make	Depth	Type	Size	Qty	Make	Depth	Type	Size	Qty	Make
Guide Shoe					Packer					Top Plug	9 5/8"	1	
Float Shoe					Bridge Plug					Bottom Plug			
Float Collar					Retainer					SSR plug set			
Insert Float										Plug Container	9 5/8"	1	
Stage Tool										Centralizers			

**Miscellaneous Materials**

Gelling Agt	Conc	Surfactant	Conc	Acid Type	Qty	Conc %
Treatment Fld	Conc	Inhibitor	Conc	Sand Type	Size	Qty

Fluid Data									
Stage/Plug #: 1									
Fluid #	Stage Type	Fluid Name	Qty	Qty uom	Mixing Density lbm/gal	Yield ft <sup>3</sup> /sk	Mix Fluid Gal/sk	Rate bbl/min	Total Mix Fluid Gal/sk
1	Water Spacer	FRESH WATER SPACER	10.00	bbl	8.33	.0	.0	.0	
2	Gelled Water Spacer	GELLED WATER SPACER	20.00	bbl	.	.0	.0	.0	
3	Water Spacer	FRESH WATER SPACER	10.00	bbl	.	.0	.0	.0	
4	VersaCem Lead Slurry	VERSACEM (TM) SYSTEM (452010)	156.0	sacks	12.3	2.38	13.77		13.77
	13.77 Gal	FRESH WATER							
5	SwiftCem Tail Slurry	SWIFTCEM (TM) SYSTEM (452990)	94.0	sacks	14.2	1.43	6.85		6.85
	6.85 Gal	FRESH WATER							
6	Displacement	FRESH WATER DISPLACEMENT	74.00	bbl	.	.0	.0	.0	
Calculated Values		Pressures			Volumes				
Displacement	74.4	Shut In: Instant		Lost Returns	NO	Cement Slurry	90	Pad	
Top Of Cement	SURFACE	5 Min		Cement Returns	20	Actual Displacement	74	Treatment	
Frac Gradient		15 Min		Spacers	40	Load and Breakdown		Total Job	
Rates									
Circulating		Mixing	5.5	Displacement	5.5	Avg. Job	5		
Cement Left In Pipe	Amount	43.37 ft	Reason	Shoe Joint					
Frac Ring # 1 @	ID	Frac ring # 2 @	ID	Frac Ring # 3 @	ID	Frac Ring # 4 @	ID		
The Information Stated Herein Is Correct				Customer Representative Signature					

# 9 5/8" Surface



Event Log					
Intersection		PP	Intersection		PP
1	START JOB	16:18:51 2.000	2	TEST LINES	16:20:18 2199
3	PUMP H2O SPACER	16:23:04 3.896	4	PUMP GELLED WATER SPACER	16:25:47 109.0
5	PUMP H2O SPACER	16:31:52 23.61	6	PUMP LEAD CEMENT	16:33:50 199.0
7	PUMP TAIL CEMENT	16:46:06 266.0	8	DROP TOP PLUG	16:51:41 18.00
9	PUMP DISPLACEMENT	16:53:51 19.96	10	SLOW RATE	17:06:45 227.0
11	LAND PLUG	17:11:42 675.9	12	CHECK FLOATS	17:14:49 93.21
13	PRESSURE TEST THE CASING	17:16:53 111.3	14	RELEASE PRESSURE	17:25:11 90.26
15	END JOB	17:27:15 1.000			

Customer:	Job Date:	Ticket #:
Well Number:	Job Type:	ADC Used: Yes
Supervisor:	Company Rep.:	