
OXY GRAND JUNCTION EBUSINESS

Shell 697-34-24
GRAND VALLEY
Garfield County , Colorado

Cement Surface Casing
23-Oct-2010

Post Job Report

The Road to Excellence Starts with Safety

Sold To #: 344034	Ship To #: 2815053	Quote #:	Sales Order #: 7711546
Customer: OXY GRAND JUNCTION EBUSINESS		Customer Rep:	
Well Name: Shell		Well #: 697-34-24	API/UWI #: 05-045-18386
Field: GRAND VALLEY	City (SAP): PARACHUTE	County/Parish: Garfield	State: Colorado
Lat: N 39.478 deg. OR N 39 deg. 28 min. 42.262 secs.		Long: W 108.202 deg. OR W -109 deg. 47 min. 52.958 secs.	
Contractor: Nabors		Rig/Platform Name/Num: M-37	
Job Purpose: Cement Surface Casing			
Well Type: Development Well		Job Type: Cement Surface Casing	
Sales Person: DUNNING, DUSTIN		Srvc Supervisor: NELSON, RYAN	MBU ID Emp #: 386514

Job Personnel

HES Emp Name	Exp Hrs	Emp #	HES Emp Name	Exp Hrs	Emp #	HES Emp Name	Exp Hrs	Emp #
COSTELDIA, BROCK James	9	476115	LYNCH, JACK William	9	483039	NELSON, RYAN Cody	9	386514
SMITH, DUSTIN Michael	9	418015	YUTZY, BRIAN Matthew	9	478510			

Equipment

HES Unit #	Distance-1 way	HES Unit #	Distance-1 way	HES Unit #	Distance-1 way	HES Unit #	Distance-1 way
10000394	120 mile	10297346	120 mile	10567589C	120 mile	10951245	120 mile
10995027	120 mile	11071559	120 mile				

Job Hours

Date	On Location Hours	Operating Hours	Date	On Location Hours	Operating Hours	Date	On Location Hours	Operating Hours
10/23/10	9	3.5						

TOTAL Total is the sum of each column separately

Job

Job Times

Formation Name	Top	Bottom	Called Out	Date	Time	Time Zone
Formation Depth (MD)			On Location	22 - Oct - 2010	23:30	MST
Form Type		BHST	Job Started	23 - Oct - 2010	03:30	MST
Job depth MD	1350. ft	Job Depth TVD	1350. ft	Job Completed	23 - Oct - 2010	12:45
Water Depth		Wk Ht Above Floor	4. ft	Departed Loc	23 - Oct - 2010	13:30
Perforation Depth (MD)	From	To				

Well Data

Description	New / Used	Max pressure psig	Size in	ID in	Weight lbm/ft	Thread	Grade	Top MD ft	Bottom MD ft	Top TVD ft	Bottom TVD ft
Open Hole				12.25				0	1350.		
Surface Casing	New		9.625	8.921	36.			0	1335.		

Sales/Rental/3rd Party (HES)

Description	Qty	Qty uom	Depth	Supplier
PLUG,CMTG, TOP, 9 5/8, HWE, 8.16 MIN/9.06 MA	1	EA		
R/A DENSOMETER W/CHART RECORDER, /JOB, ZI	1	JOB		
PORT. DATA ACQUIS. W/OPTICEM RT W/HES	1	EA		
ADC (AUTO DENSITY CTRL) SYS, /JOB, ZI	1	JOB		

Tools and Accessories

Type	Size	Qty	Make	Depth	Type	Size	Qty	Make	Depth	Type	Size	Qty	Make
Guide Shoe					Packer					Top Plug	9 5/8	1	HES
Float Shoe					Bridge Plug					Bottom Plug			
Float Collar					Retainer					SSR plug set			
Insert Float										Plug Container	9 5/8	1	HES
Stage Tool										Centralizers			

Miscellaneous Materials

Gelling Agt	Conc	Surfactant	Conc	Acid Type	Qty	Conc %
Treatment Fld	Conc	Inhibitor	Conc	Sand Type	Size	Qty

Fluid Data									
Stage/Plug #: 1									
Fluid #	Stage Type	Fluid Name	Qty	Qty uom	Mixing Density lbm/gal	Yield ft ³ /sk	Mix Fluid Gal/sk	Rate bbl/min	Total Mix Fluid Gal/sk
1	Water Spacer		20.00	bbl	8.33	.0	.0	.0	
2	Gelled Spacer		20.00	bbl	8.4	.0	.0	.0	
3	Water Spacer		20.00	bbl	8.33	.0	.0	.0	
4	Lead Cement	VERSACEM (TM) SYSTEM (452010)	215.0	sacks	12.3	2.38	13.75		13.75
5	Tail Cement	SWIFTCEM (TM) SYSTEM (452990)	93.0	sacks	14.2	1.43	6.88		6.72
6	Displacement		99.7	bbl	8.33	.0	.0	.0	
Calculated Values		Pressures			Volumes				
Displacement	99.7	Shut In: Instant		Lost Returns	No	Cement Slurry	114.8	Pad	
Top Of Cement	0	5 Min		Cement Returns	36	Actual Displacement	99.7	Treatment	
Frac Gradient		15 Min		Spacers		Load and Breakdown		Total Job	
Rates									
Circulating		Mixing		5	Displacement		5	Avg. Job	5
Cement Left In Pipe	Amount	45.1 ft	Reason	Shoe Joint					
Frac Ring # 1 @	ID	Frac ring # 2 @	ID	Frac Ring # 3 @	ID	Frac Ring # 4 @	ID		
The Information Stated Herein Is Correct				Customer Representative Signature					

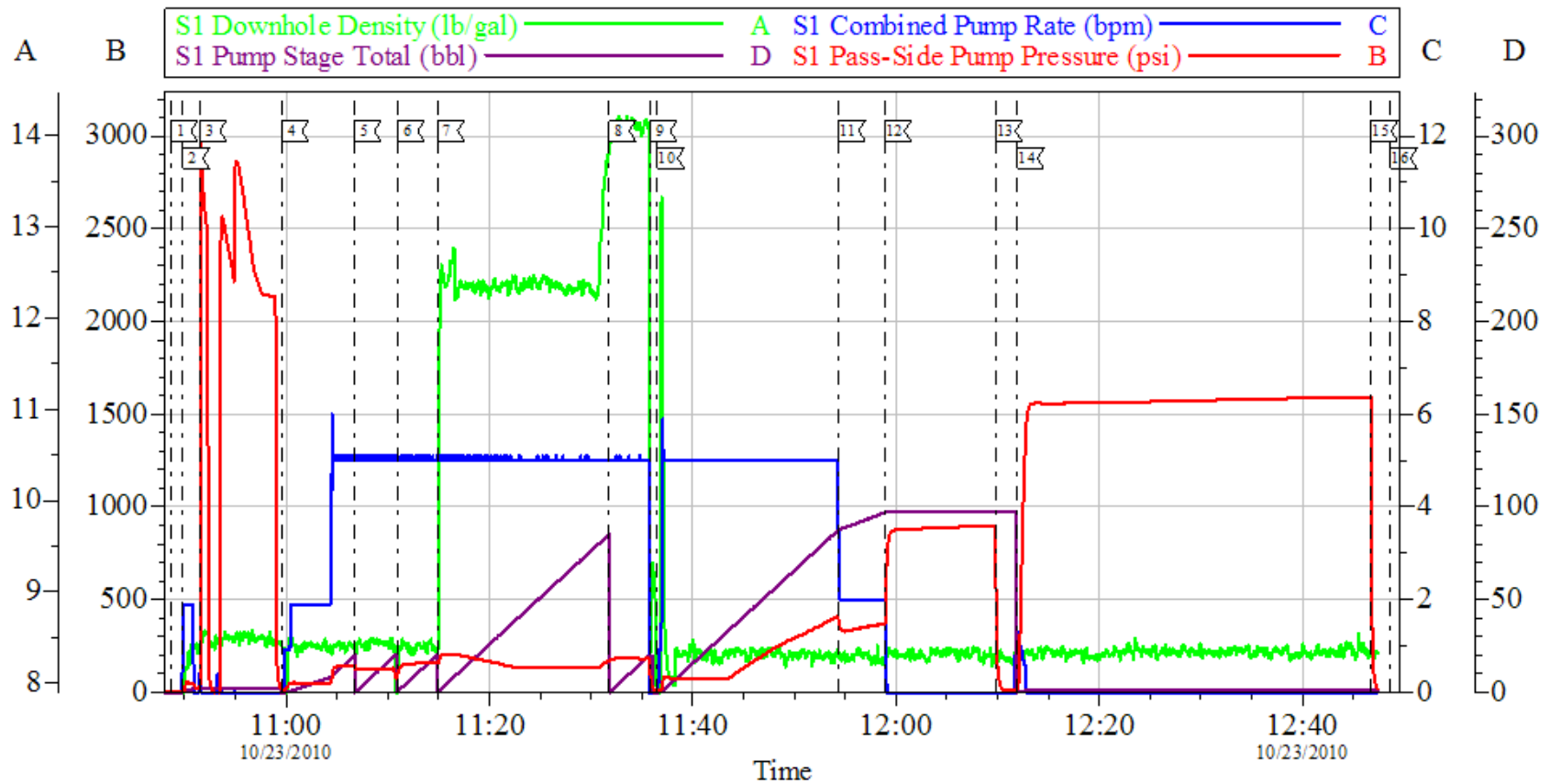
The Road to Excellence Starts with Safety

Sold To #: 344034	Ship To #: 2815053	Quote #:	Sales Order #: 7711546
Customer: OXY GRAND JUNCTION EBUSINESS		Customer Rep:	
Well Name: Shell	Well #: 697-34-24	API/UWI #: 05-045-18386	
Field: GRAND VALLEY	City (SAP): PARACHUTE	County/Parish: Garfield	State: Colorado
Legal Description:			
Lat: N 39.478 deg. OR N 39 deg. 28 min. 42.262 secs.		Long: W 108.202 deg. OR W -109 deg. 47 min. 52.958 secs.	
Contractor: Nabors		Rig/Platform Name/Num: M-37	
Job Purpose: Cement Surface Casing			Ticket Amount:
Well Type: Development Well		Job Type: Cement Surface Casing	
Sales Person: DUNNING, DUSTIN		Srvc Supervisor: NELSON, RYAN	MBU ID Emp #: 386514

Activity Description	Date/Time	Cht #	Rate bbl/min	Volume bbl		Pressure psig		Comments
				Stage	Total	Tubing	Casing	
Call Out	10/22/2010 23:30							
Arrive At Loc	10/23/2010 03:30							Rig running casing
Pre-Rig Up Safety Meeting	10/23/2010 09:00							
Rig-Up Equipment	10/23/2010 09:30							
Pre-Job Safety Meeting	10/23/2010 10:30							
Start Job	10/23/2010 10:49							TD-1350' TP-1335' SJ-45.08' CASING 9 5/8 36# HOLE 12.25" MUD 9.3
Other	10/23/2010 10:49			2				Fill Lines
Test Lines	10/23/2010 10:51						2500.0	
Pump Spacer 1	10/23/2010 10:59		5	20			120.0	Fresh Water
Pump Spacer 2	10/23/2010 11:06		5	20			120.0	Gelled Water Spacer
Pump Spacer 1	10/23/2010 11:10		5	20			120.0	Fresh water
Pump Lead Cement	10/23/2010 11:14		5	91.1			185.0	215 sks 12.3 ppg 2.38 yield 13.77 gal/sk
Pump Tail Cement	10/23/2010 11:31		5	23.7			180.0	93 sks 14.2 ppg 1.43 yield 6.85 gal/sk
Shutdown	10/23/2010 11:35							
Drop Top Plug	10/23/2010 11:35							
Pump Displacement	10/23/2010 11:36		5	99.7			360.0	Fresh water
Cement Returns to Surface	10/23/2010 11:48							Well circulated 36 bbl cement to surface.

Activity Description	Date/Time	Cht #	Rate bbl/min	Volume bbl		Pressure psig		Comments
				Stage	Total	Tubing	Casing	
Slow Rate	10/23/2010 11:53		2	89			335.0	
Bump Plug	10/23/2010 11:59		2	99.7			872.0	
Check Floats	10/23/2010 12:09							Floats held
Pressure Up Well	10/23/2010 12:11							Pressure up well to 1500 psi per company man request
Release Casing Pressure	10/23/2010 12:41							
End Job	10/23/2010 12:45							Well circulated prior to the job. Pipe static during job. Transport hours 9. Thank you for using Halliburton-Ryan Nelson & Crew

OXY 9 5/8" Surface



Local Event Log			
1 Start Job	10:48:40	2 Fill Lines	10:49:51
3 Pressure Test	10:51:31	4 Pump Spacer	10:59:36
5 Pump Gelled H2O Spacer	11:06:43	6 Pump Spacer	11:11:00
7 Pump Lead Cement	11:14:55	8 Pump Tail Cement	11:31:47
9 Shut Down Drop Plug	11:35:49	10 Pump Displacement	11:36:32
11 Slow Rate	11:54:21	12 Bump Plug	11:58:51
13 Check Floats	12:09:47	14 Pressure Test Casing	12:11:56
15 Release Pressure	12:46:44	16 End Job	12:48:37

Customer: OXY	Job Date: 23-Oct-2010	Sales Order #: 7711546
Well Description: Shell 697-34-24	Job Type: Surface	ADC Used: Yes
Company Rep: Cody	Cement Supervisor: Ryan Nelson	Elite #: 3/Dustin Smith