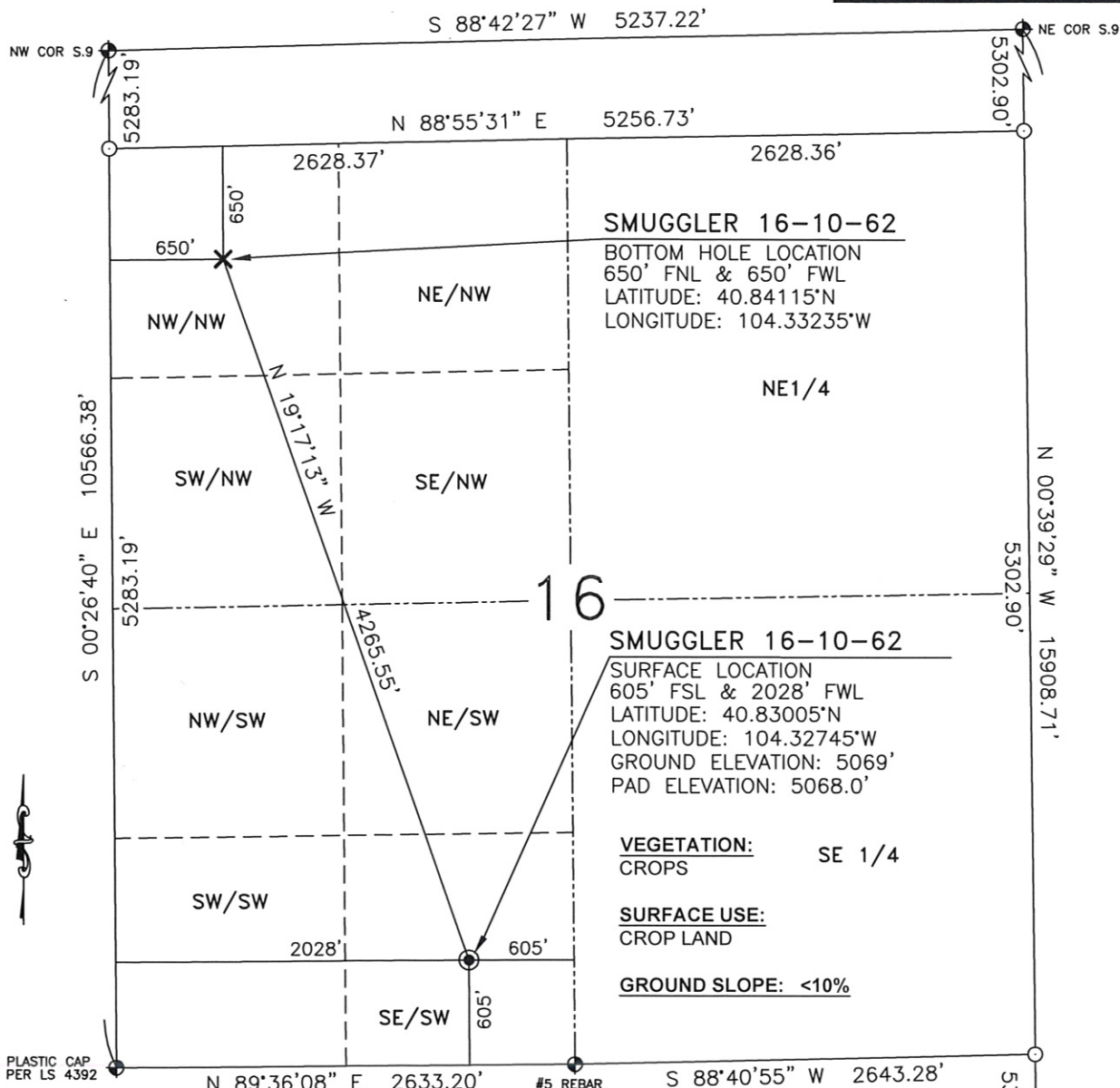


WELL LOCATION MAP

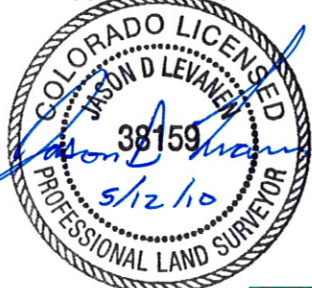
SMUGGLER 16-10-62



LEGEND:

- ⊙ - PROPOSED WELL SURFACE LOCATION
- ⊗ - PROPOSED BOTTOM HOLE LOCATION
- ⊕ - FOUND SPIKE OR AS NOTED
- - CALCULATED CORNER

I, JASON D. LEVANEN, A DULY REGISTERED LAND SURVEYOR IN THE STATE OF COLORADO, DO HEREBY CERTIFY THAT THIS PLAT WAS PREPARED FROM NOTES TAKEN DURING A SURVEY PERFORMED BY ME OR UNDER MY SUPERVISION ON MAY 06, 2010.

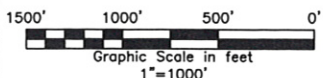


NOTES:

- 1) Horizontal and vertical coordinates based from NGS CORS station "COFC", with an elevation of 5285.90'.
 - 2) Basis of bearings are Colorado State Plane north zone. Distances are ground NAD 83, NAVD 88. PAF:1.000251
 - 3) All section line dimensions shown hereon are based on field measurements of existing monuments and/or physical evidence found in the field unless otherwise indicated. refer to land survey plats deposited in Weld County
 - 4) Physical features shown hereon are for graphical representation only.
 - 5) See form 2A for visible improvements within 400' of the wellhead
 - 6) Distances to nearest section lines are measured perpendicularly.
 - 7) This is not a land survey nor land survey plat.
 - 8) Date of survey 5/06/10; Date of Drawing 5/12/10. REV 0
- PDOP Reading 2.1 Instrument Operator: Clayton Rosenlund

SLAWSON EXPLORATION
 COMPANY, INC.
 SMUGGLER 16-10-62

SL: SE1/4SW1/4, S.16, T10N-R62W
 BL: NW1/4NW1/4, S.16, T10N-R62W
 6TH P.M., WELD COUNTY, COLORADO



WESTERN LAND SERVICES

Sheridan, WY 82801 (307)673-1817

DP: L:\Slawson\Well Plats\Well_Plats.dwg

Date: 5-12-10