
OXY GRAND JUNCTION EBUSINESS

**CC 697-15-03B
PICEANCE
Garfield County , Colorado**

**Cement Surface Casing
04-Oct-2010**

Post Job Report

The Road to Excellence Starts with Safety

Sold To #: 344034	Ship To #: 2810978	Quote #:	Sales Order #: 7676074
Customer: OXY GRAND JUNCTION EBUSINESS		Customer Rep: Dillion, Pat	
Well Name: CC		Well #: 697-15-03B	API/UWI #:
Field: PICEANCE	City (SAP): PARACHUTE	County/Parish: Garfield	State: Colorado
Contractor: H&P 353		Rig/Platform Name/Num: H&P 353	
Job Purpose: Cement Surface Casing			
Well Type: Development Well		Job Type: Cement Surface Casing	
Sales Person: DUNNING, DUSTIN		Srv Supervisor: REEVES, BRANDON	MBU ID Emp #: 287883

Job Personnel

HES Emp Name	Exp Hrs	Emp #	HES Emp Name	Exp Hrs	Emp #	HES Emp Name	Exp Hrs	Emp #
CHASTAIN, DERICK Allan	14	455848	COSTELDIA, BROCK James	14	476115	DUBON, TODD N	14	443351
REEVES, BRANDON W	14	287883						

Equipment

HES Unit #	Distance-1 way	HES Unit #	Distance-1 way	HES Unit #	Distance-1 way	HES Unit #	Distance-1 way
10000394	120 mile	10744648C	120 mile	10867304	120 mile	10998054	120 mile
10998508	120 mile	11259883	120 mile				

Job Hours

Date	On Location Hours	Operating Hours	Date	On Location Hours	Operating Hours	Date	On Location Hours	Operating Hours
10/03/2010	2	0	10/04/2010	12	7			

TOTAL Total is the sum of each column separately

Job

Formation Name	Top	Bottom	Called Out	Date	Time	Time Zone
Formation Depth (MD)			On Location	03 - Oct - 2010	13:00	MST
Form Type		BHST	Job Started	03 - Oct - 2010	19:45	MST
Job depth MD	2729. ft	Job Depth TVD	Job Started	04 - Oct - 2010	05:00	MST
Water Depth		Wk Ht Above Floor	Job Completed	04 - Oct - 2010	00:00	MST
Perforation Depth (MD)	From	To	Departed Loc			

Well Data

Description	New / Used	Max pressure psig	Size in	ID in	Weight lbm/ft	Thread	Grade	Top MD ft	Bottom MD ft	Top TVD ft	Bottom TVD ft
-------------	------------	-------------------	---------	-------	---------------	--------	-------	-----------	--------------	------------	---------------

Sales/Rental/3rd Party (HES)

Description	Qty	Qty uom	Depth	Supplier
PLUG,CMTG,TOP,9 5/8,HWE,8.16 MIN/9.06 MA	1	EA		
R/A DENSOMETER W/CHART RECORDER,/JOB,ZI	1	JOB		
ADC (AUTO DENSITY CTRL) SYS, /JOB,ZI	1	JOB		

Tools and Accessories

Type	Size	Qty	Make	Depth	Type	Size	Qty	Make	Depth	Type	Size	Qty	Make
Guide Shoe					Packer					Top Plug	9 5/8"	1	
Float Shoe					Bridge Plug					Bottom Plug			
Float Collar					Retainer					SSR plug set			
Insert Float										Plug Container	9 5/8"	1	
Stage Tool										Centralizers			

Miscellaneous Materials

Gelling Agt	Conc	Surfactant	Conc	Acid Type	Qty	Conc	%
Treatment Fld	Conc	Inhibitor	Conc	Sand Type	Size		Qty

Fluid Data									
Stage/Plug #: 1									
Fluid #	Stage Type	Fluid Name	Qty	Qty uom	Mixing Density lbm/gal	Yield ft ³ /sk	Mix Fluid Gal/sk	Rate bbl/min	Total Mix Fluid Gal/sk
1	Water Spacer	FRESH WATER SPACER	20.00	bbl	8.33	.0	.0	.0	
2	Super Flush 101	SUPER FLUSH 101 - SBM (12199)	20.00	bbl	10.	.0	.0	.0	
3	Water Spacer	FRESH WATER SPACER	20.00	bbl	.	.0	.0	.0	
4	Lead Cement	VERSACEM (TM) SYSTEM (452010)	892.0	sacks	12.3	2.33	12.62		12.62
		12.62 Gal	FRESH WATER						
5	Tail Cement	VERSACEM (TM) SYSTEM (452010)	135.0	sacks	12.8	2.07	10.67		10.67
		10.67 Gal	FRESH WATER						
6	Displacement	FRESH WATER DISPLACEMENT	207.00	bbl	.	.0	.0	.0	
7	Topout Cement	HALCEM (TM) SYSTEM (452986)	60	sacks	12.5	1.97	10.96		10.96
		10.96 Gal	FRESH WATER						
Calculated Values		Pressures		Volumes					
Displacement	207.1	Shut In: Instant		Lost Returns	NO	Cement Slurry	420	Pad	
Top Of Cement	SURFACE	5 Min		Cement Returns	130	Actual Displacement	207	Treatment	
Frac Gradient		15 Min		Spacers	60	Load and Breakdown		Total Job	
Rates									
Circulating		Mixing	6	Displacement	6	Avg. Job	4		
Cement Left In Pipe	Amount	49.80 ft	Reason	Shoe Joint					
Frac Ring # 1 @	ID	Frac ring # 2 @	ID	Frac Ring # 3 @	ID	Frac Ring # 4 @	ID		
The Information Stated Herein Is Correct				Customer Representative Signature					

The Road to Excellence Starts with Safety

Sold To #: 344034		Ship To #: 2810978		Quote #:		Sales Order #: 7676074	
Customer: OXY GRAND JUNCTION EBUSINESS				Customer Rep: Dillion, Pat			
Well Name: CC			Well #: 697-15-03B			API/UWI #:	
Field: PICEANCE		City (SAP): PARACHUTE		County/Parish: Garfield		State: Colorado	
Legal Description:							
Lat: N 0 deg. OR N 0 deg. 0 min. 0 secs.				Long: E 0 deg. OR E 0 deg. 0 min. 0 secs.			
Contractor: H&P 353			Rig/Platform Name/Num: H&P 353				
Job Purpose: Cement Surface Casing						Ticket Amount:	
Well Type: Development Well			Job Type: Cement Surface Casing				
Sales Person: DUNNING, DUSTIN			Srvc Supervisor: REEVES, BRANDON			MBU ID Emp #: 287883	

Activity Description	Date/Time	Cht #	Rate bbl/min	Volume bbl		Pressure psig		Comments
				Stage	Total	Tubing	Casing	
Call Out	10/03/2010 13:00							
Pre-Convoy Safety Meeting	10/03/2010 15:30							
Arrive at Location from Service Center	10/03/2010 19:45							
Assessment Of Location Safety Meeting	10/04/2010 03:00							
Other	10/04/2010 03:15							SPOT EQUIPMENT
Pre-Rig Up Safety Meeting	10/04/2010 03:30							
Rig-Up Equipment	10/04/2010 03:45							
Pre-Job Safety Meeting	10/04/2010 04:45							
Start Job	10/04/2010 05:00							TD-2760' TP-2729.02' SJ-49.80' MW-9.1# HOLE-14 3/4" CASING- 9 5/8" 36#
Test Lines	10/04/2010 05:03						2700.0	
Pump Spacer 1	10/04/2010 05:06		4	20			105.0	FRESH WATER SPACER
Pump Spacer 2	10/04/2010 05:11		4	20			140.0	SUPERFLUSH 101 SPACER
Pump Spacer 1	10/04/2010 05:16		6	20				FRESH WATER SPACER
Pump Lead Cement	10/04/2010 05:24		6	370.2			380.0	892 SKS. @ 12.3# 2.33 YIELD 12.62 WRQ.
Pump Tail Cement	10/04/2010 07:27		6	49.8			190.0	135 SKS. @ 12.8# 2.07 YIELD 10.67 WRQ.
Drop Top Plug	10/04/2010 07:42							
Pump Displacement	10/04/2010 07:43		6				885.0	FRESH WATER DISPLACEMENT

Sold To # : 344034

Ship To # :2810978

Quote # :

Sales Order # :

7676074

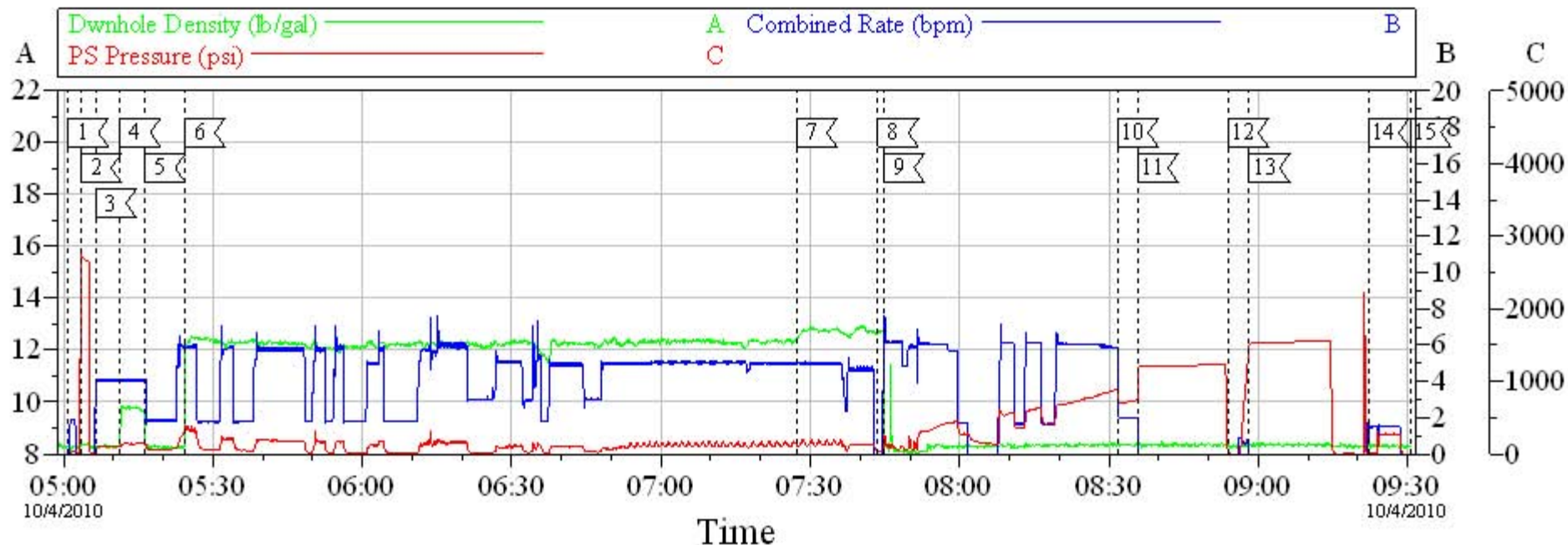
SUMMIT Version: 7.20.130

Monday, October 04, 2010 01:02:00

Activity Description	Date/Time	Cht #	Rate bbl/min	Volume bbl		Pressure psig		Comments
				Stage	Total	Tubing	Casing	
Slow Rate	10/04/2010 08:30		2	197			710.0	
Bump Plug	10/04/2010 08:35		2	207			1220.0	PLUG LANDED. LANDED THE PLUG AT 720 PSI. PRESSURED UP TO 1220 PSI.
Check Floats	10/04/2010 08:52							FLOATS HELD
Other	10/04/2010 08:55		2	1			1500.0	PRESSURE TEST THE CASING TO 1500 PSI. FOR 15 MINUTES
Other	10/04/2010 09:20		2	10			280.0	CIRCULATED THE PARASITE STRING WITH 10 BBLs. OF SUGAR WATER
End Job	10/04/2010 09:30							END OF PRIMARY CEMENT JOB. CIRCULATED 130 BBLs OF CEMENT TO SURFACE. HAD CIRCULATION ON AND OFF THROUGHOUT THE JOB. PIPE WAS NOT RECIPROCATED.
Start Job	10/04/2010 11:18							START TOPOUT WELL # 697-10-50B
Pump Cement	10/04/2010 11:20		1	6		10.0		17 SKS. @ 12.5# 1.97 YIELD 10.96 WRQ.
End Job	10/04/2010 11:32							CIRCULATED CEMENT TO SURFACE.
Start Job	10/04/2010 11:36							START TOPOUT WELL # 697-15-03B
Pump Cement	10/04/2010 11:37		2	7.2		15.0		21 SKS. @ 12.5# 1.97 YIELD 10.96 WRQ.
End Job	10/04/2010 11:48							CIRCULATED CEMENT TO SURFACE.
Start Job	10/04/2010 11:53							15 SKS. @ 12.5# 1.97 YIELD 10.96 WRQ.
Pump Cement	10/04/2010 11:54		1.5	5		15.0		
End Job	10/04/2010 12:00							CIRCULATED CEMENT TO SURFACE.
Rig-Down Equipment	10/04/2010 12:20							THANKS FOR USING HALLIBURTON. BRANDON REEVES AND CREW.

Activity Description	Date/Time	Cht #	Rate bbl/ min	Volume bbl		Pressure psig		Comments
				Stage	Total	Tubing	Casing	
Other	10/04/2010 12:30							USED APPROX. 60 SKS. OF TOPOUT CEMENT. 175 SKS.LEFT ON LOCATION.

9 5/8" Surface



Event Log

Intersection	PP	Intersection	PP
1 START JOB	05:00:46 -3.000	2 TEST LINES	05:03:24 27.67
3 PUMP H2O SPACER	05:06:22 40.55	4 PUMP SUPERFLUSH SPACER	05:11:15 100.2
5 PUMP H2O SPACER	05:16:15 138.8	6 PUMP LEAD CEMENT	05:24:14 282.1
7 PUMP TAIL CEMENT	07:27:12 128.7	8 DROP TOP PLUG	07:43:34 33.00
9 PUMP DISPLACEMENT	07:44:46 48.39	10 SLOW RATE	08:31:47 855.0
11 LAND PLUG	08:35:44 797.9	12 CHECK FLOATS	08:53:55 44.43
13 PRESSURE TEST CASING	08:58:10 1471	14 CIRCULATE PARASITE STRING	09:22:07 13.00
15 END JOB	09:30:36 0.000		

Customer:

Well Number:

Supervisor:

Job Date:

Job Type:

Company Rep.:

Ticket #:

ADC Used: Yes

CemWin v1.7.2
04-Oct-10 09:40