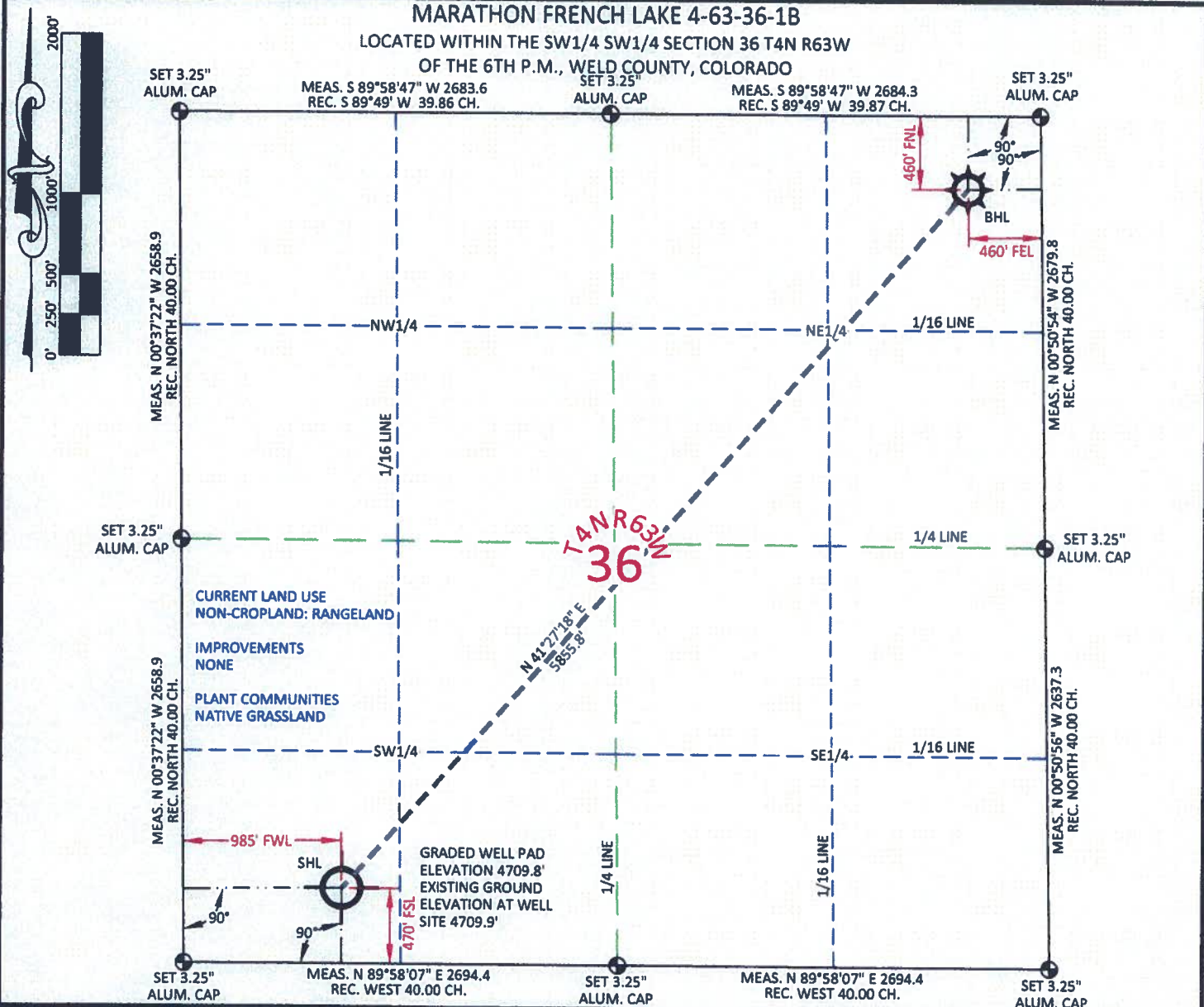


MARATHON FRENCH LAKE 4-63-36-1B

LOCATED WITHIN THE SW1/4 SW1/4 SECTION 36 T4N R63W
OF THE 6TH P.M., WELD COUNTY, COLORADO



SURFACE HOLE LOCATION

STATE PLANE CO. NORTH	GEODESIC	DEG. MIN. SEC.	DEC. DEG.
NAD 27	NAD 83	NAD 27	NAD 83
LAT.	40.262506°		
LONG.	104.392059°		
LAT.	40.262526°		
LONG.	104.391549°		
LAT.	40°15'45.02"		
LONG.	104°23'31.41"		
LAT.	40°15'45.09"		
LONG.	104°23'29.58"		
NORTH	1340404.21		
EAST	3309190.75		
NORTH	340406.90		
EAST	2309341.14		

BOTTOM HOLE LOCATION

STATE PLANE CO. NORTH	GEODESIC	DEG. MIN. SEC.	DEC. DEG.
NAD 27	NAD 83	NAD 27	NAD 83
LAT.	40.274419°		
LONG.	104.377970°		
LAT.	40.274438°		
LONG.	104.377461°		
LAT.	40°16'27.91"		
LONG.	104°22'40.69"		
LAT.	40°16'27.98"		
LONG.	104°22'38.85"		
NORTH	1344792.98		
EAST	3313067.46		
NORTH	344795.61		
EAST	2313217.80		

FOOTAGE: 985' FWL - 470' FSL

FOOTAGE: 460' FEL - 460' FNL

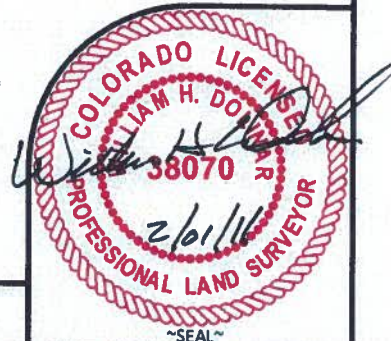
MEASURE DATE	INSTRUMENT OPERATOR	PDOP	SHL GRND ELEV.
01/26/2011	ADAM HARMON	1.445	4709.9'

CONFIDENTIALITY NOTES:

The information contained in this plat is legally privileged and confidential information intended only for the use of the recipients. If you are not the intended recipients, you are hereby notified that any use, dissemination, distribution or copying of this information is strictly prohibited.

I, William H. Dollnar, Professional Land Surveyor, CO. RLS # 38070 hereby certify that (in accordance with a request from Anna Walls with Marathon Oil Co, 5555 San Felipe, Houston, TX 77056) I and or personnel under my direction made a survey on the 26th day of January 2011, for the Surface Hole Location and Elevation of Marathon Oil Co. FRENCH LAKE 4-63-36-1B being located within the SW1/4 SW1/4 Section 36, T4N R63W and the Bottom Hole Location being located in the NE1/4 NE1/4 of Section 36, T4N, R63W, both being of the 6th P.M., Weld County, State of Colorado.

- All bearings and distances are GRID, based on the Colorado State Plane Coordinate System, North Zone, North American Datum 1983 from GPS observations occupying a WHS control point (5/8" rebar) and having the Location and Elevation derived from an Opus Solution.
- Vertical Datum used is of NAVD 88.
- Record Bearings and Distances as shown are based on the General Land Office Survey plat approved on the 24th day of November 1868.



WILLIAM H. SMITH & ASSOCIATES P.C.
SURVEYING CONSULTANTS
150 EAST SECOND NORTH GREEN RIVER, WY
PHONE: 307-875-3638
307-875-3639
www.wsmithpc.com

DRAWN BY: CED	CHECKED BY: WHD
PROJECT NO: 463361B	JOB NO: 2011001
REVISIONS:	

LEGEND

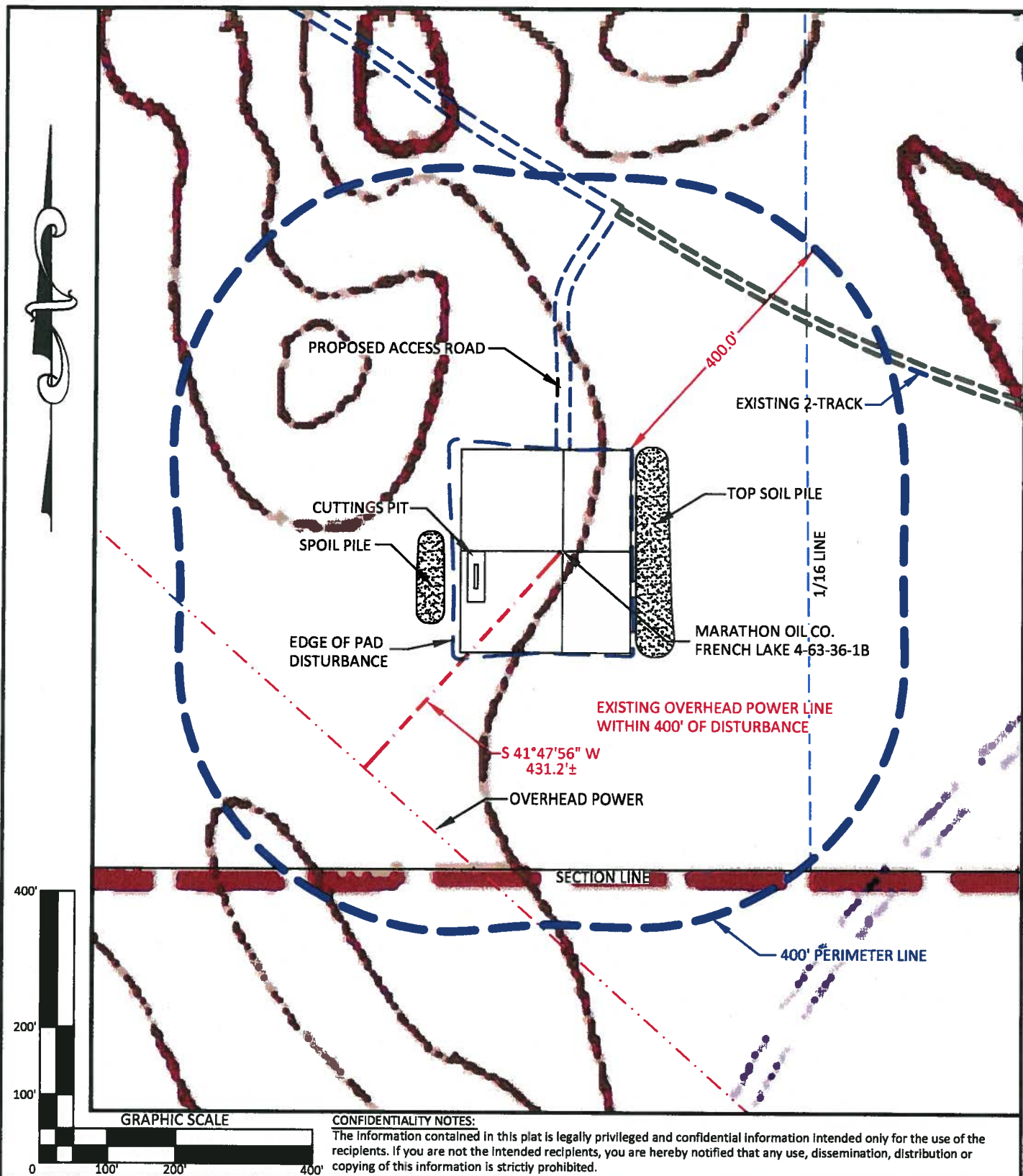
- FOUND CORNER
- ⊗ CALCULATED CORNER
- NOTHING FOUND

LOCATION:
FRENCH LAKE 4-63-36-1B
WITHIN THE SW1/4
SW1/4 SECTION 36,
T 4 N, R 63 W,
6TH PM.
WELD COUNTY,
COLORADO

MARATHON OIL COMPANY
PO BOX 3128, HOUSTON TX, 77253
5555 SAN FELIPE, HOUSTON TX, 77056

WELL LOCATION PLAT

SCALE: 1"=1000'	EXHIBIT "A"
DATE: 01/31/2011	SHEET 1 OF 1



**WILLIAM H. SMITH
& ASSOCIATES P.C.**

SURVEYING CONSULTANTS
50 EAST SECOND NORTH PHONE: 307-875-3638
GREEN RIVER, WY 307-875-3639
www.whsmithpc.com

DRAWN BY: CED

CHECKED BY: WHD

PROJECT NO: 463361B

JOB NO: 2011001

REVISIONS:

LEGEND

400' PERIMETER
PROPOSED ACCESS
EXISTING 2-TRACK
O.H.P.

LOCATION:

FRENCH LAKE
4-63-36-1B
WITHIN THE SW/4
SW/4 SECTION 36,
T 4 N, R 63 W,
6TH PM.
WELD COUNTY,
COLORADO

MARATHON OIL COMPANY
PO BOX 3128, HOUSTON TX, 77253
5555 SAN FELIPE, HOUSTON TX, 77056

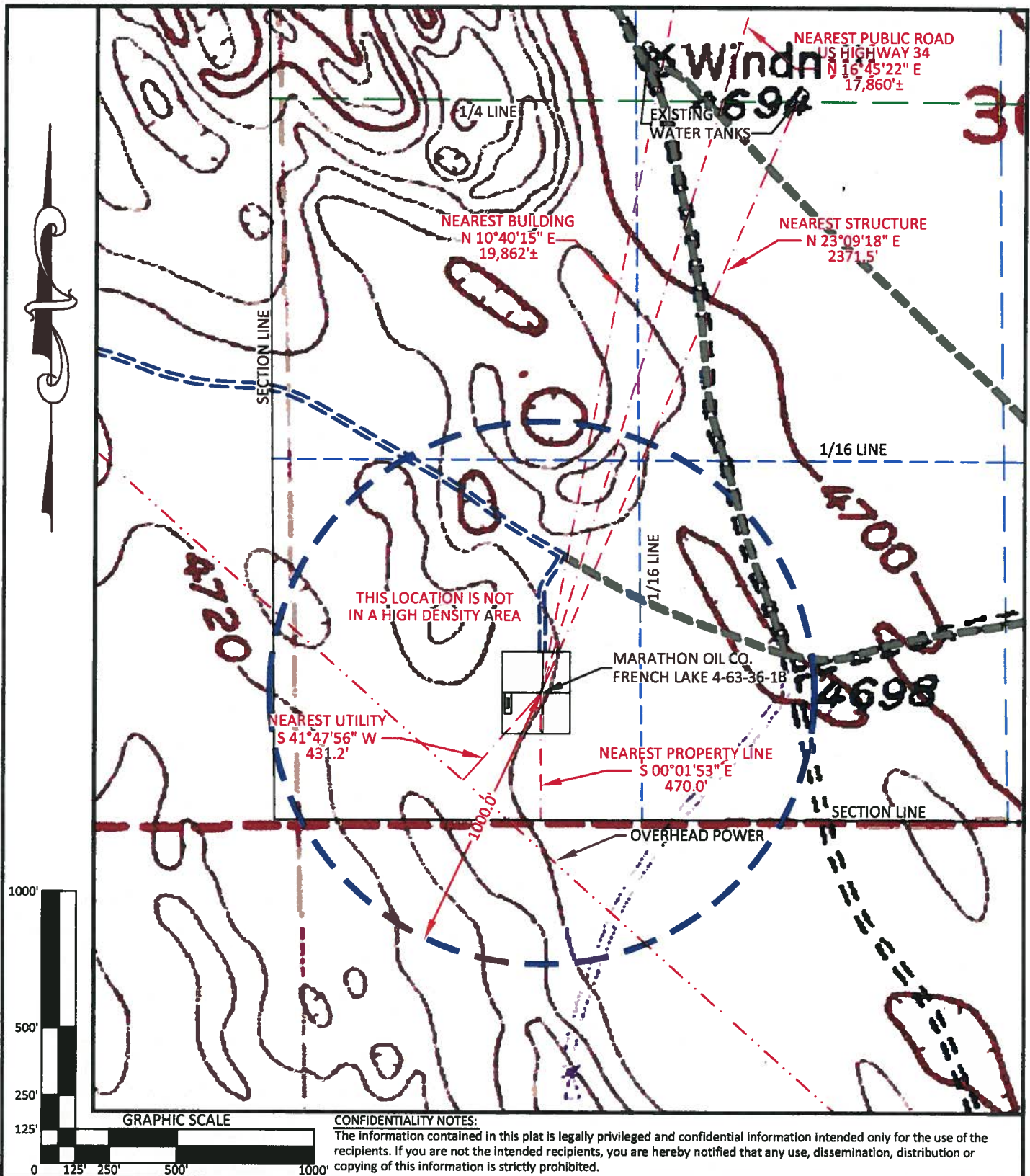
LOCATION DRAWING


SCALE: 1"=200'

DATE: 01/31/2011

EXHIBIT "C"

SHEET 2 OF 10



 <p>WILLIAM H. SMITH & ASSOCIATES P.C. SURVEYING CONSULTANTS 150 EAST SECOND NORTH GREEN RIVER, WY 80430 PHONE: 307-875-3638 307-875-3639 www.whsmithpc.com</p>	<p>LEGEND</p> <p>1000' RADIUS ———</p> <p>PROPOSED ACCESS ———</p> <p>EXISTING 2-TRACK ———</p> <p>O.H.P. - - - - -</p>		<p>LOCATION:</p> <p>FRENCH LAKE 4-63-36-1B WITHIN THE SW/4 SW/4 SECTION 36, T 4 N, R 63 W, 6TH PM. WELD COUNTY, COLORADO</p>	<p>MARATHON OIL COMPANY PO BOX 3128, HOUSTON TX, 77253 5555 SAN FELIPE, HOUSTON TX, 77056</p>
	<p>DRAWN BY: CED CHECKED BY: WHD</p> <p>PROJECT NO: 4633618 JOB NO: 2011001</p> <p>REVISIONS:</p>		<p>CULTURE MAP</p>	
			<p>SCALE: 1"=500'</p> <p>DATE: 01/31/2011</p>	<p>EXHIBIT "H"</p> <p>SHEET 7 OF 10</p>