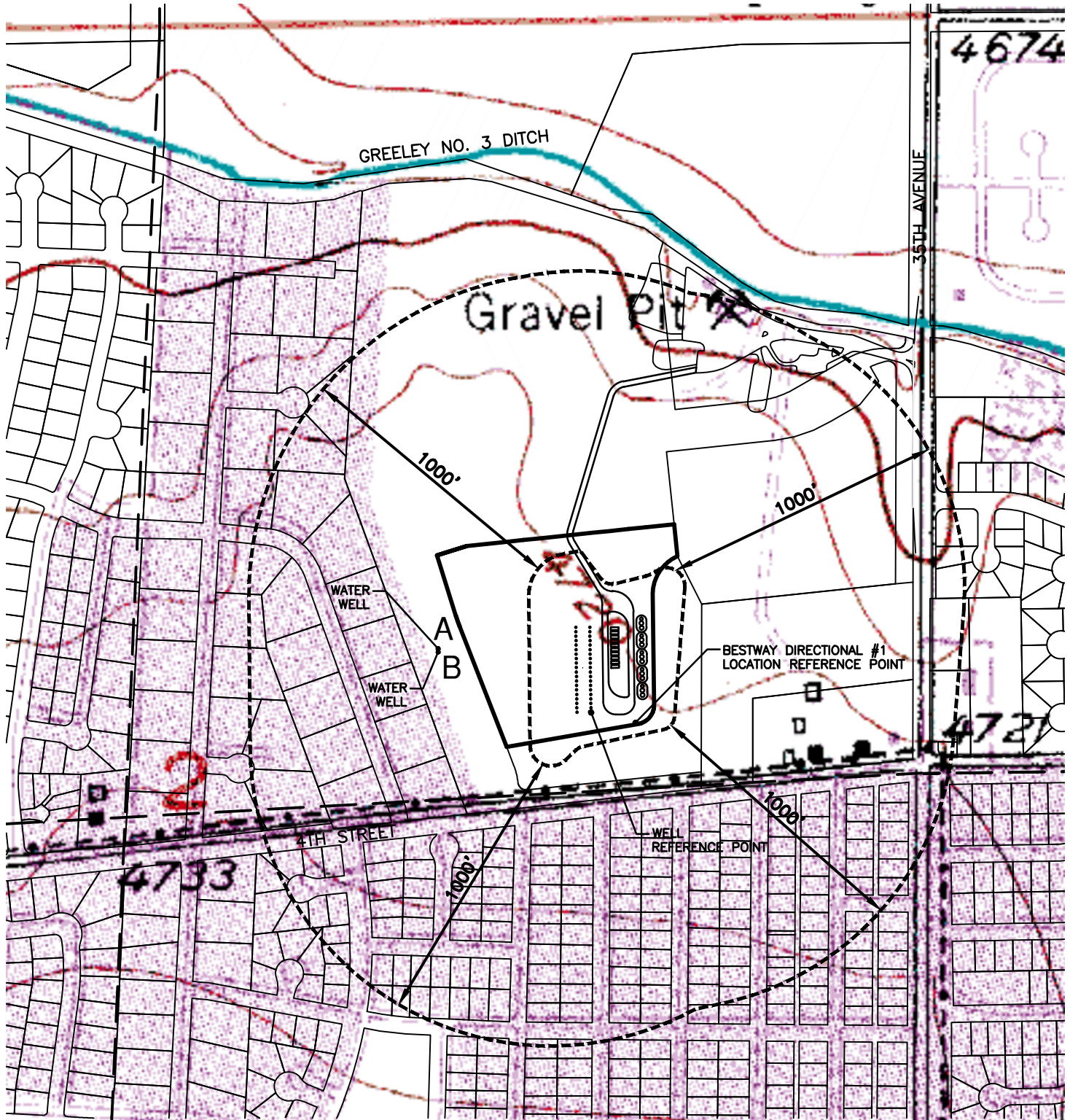


## SURFACE WATER

1. THE BESTWAY DIRECTIONAL #1 LOCATION REFERENCE POINT WAS PERMANENTLY SET WITH A 5/8" REBAR AND WILL BE MAINTAINED THROUGH THE CONSTRUCTION/DRILLING OF THE ENTIRE WELL PAD.
2. ALL DISTANCES AND BEARINGS REPORTED ARE MEASURED FROM THE WELL REFERENCE POINT.

- A. WATER WELL - 590' NW  
B. WATER WELL - 590' NW

LOCATION  
NE/4, SEC 2, T5N, R66W



**LAMP RYNEARSON**  
& ASSOCIATES

4715 Innovation Drive  
Fort Collins, CO 80525  
www.LRA-Inc.com  
970.226.0342 | P  
970.226.0879 | F

**BESTWAY  
HYDROLOGY  
MAP**

drawn by: EKM  
designer: EKM  
job number-tasks: 0210013.00  
date: 2/15/2011  
scale: 1" = 500'  
site name: