



CHEVRON USA, INC.

TYPICAL RIG LAYOUT FOR

MC HAGOOD B2

SECTION 22, T2N, R103W, 6th P.M.

814' FNL 2229' FWL

FIGURE #3

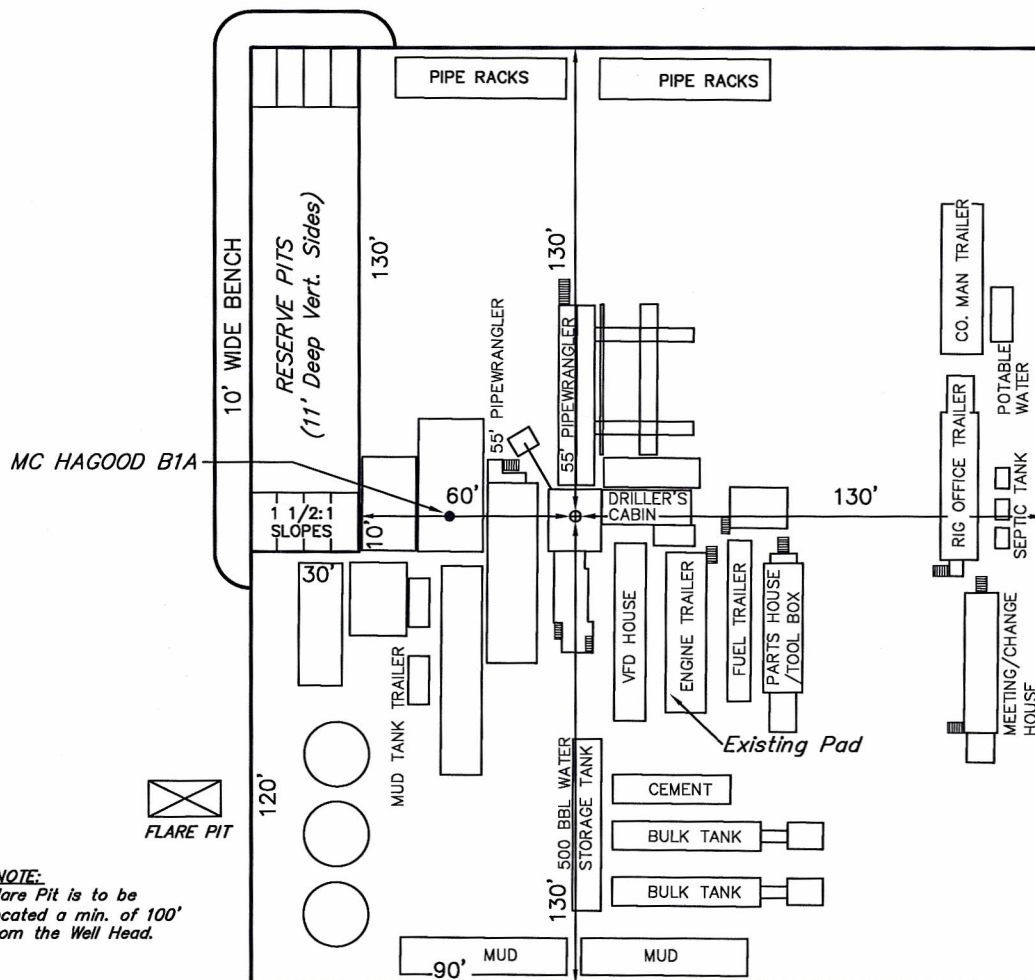
SCALE: 1" = 50'

DATE: 10-12-10

DRAWN BY: S.L.

REVISED: 10-19-10 S.L.

REVISED: 12-02-10 D.R.B.



**NOTE:**  
Flare Pit is to be located a min. of 100' from the Well Head.