
OXY GRAND JUNCTION EBUSINESS

**CC 697-15-03A
GRAND VALLEY
Garfield County , Colorado**

**Cement Surface Casing
16-Oct-2010**

Post Job Report

The Road to Excellence Starts with Safety

Sold To #: 344034	Ship To #: 2813366	Quote #:	Sales Order #: 7703111
Customer: OXY GRAND JUNCTION EBUSINESS		Customer Rep: DILLION, PAT	
Well Name: CC	Well #: 697-15-03A	API/UWI #: 05-045-18028	
Field: GRAND VALLEY	City (SAP):	County/Parish: Garfield	State: Colorado
Lat: N 39.53 deg. OR N 39 deg. 31 min. 46.355 secs.		Long: W 108.213 deg. OR W -109 deg. 47 min. 12.977 secs.	
Contractor: H&P Drilling		Rig/Platform Name/Num: H&P 353	
Job Purpose: Cement Surface Casing			
Well Type: Development Well		Job Type: Cement Surface Casing	
Sales Person: DUNNING, DUSTIN		Srvc Supervisor: MAGERS, MICHAEL	MBU ID Emp #: 339439

Job Personnel

HES Emp Name	Exp Hrs	Emp #	HES Emp Name	Exp Hrs	Emp #	HES Emp Name	Exp Hrs	Emp #
BORSZICH, STEPHEN A	13	412388	DUBON, TODD N	13	443351	MAGERS, MICHAEL Gerard	13	339439
SALAZAR, PAUL Omar	13	445614						

Equipment

HES Unit #	Distance-1 way	HES Unit #	Distance-1 way	HES Unit #	Distance-1 way	HES Unit #	Distance-1 way
10025041	120 mile	10741119	120 mile	10744648C	120 mile	10822535	120 mile
10998508	120 mile	11259886	120 mile				

Job Hours

Date	On Location Hours	Operating Hours	Date	On Location Hours	Operating Hours	Date	On Location Hours	Operating Hours
10/15/2010	4.5	0	10/16/2010	8.5	5			

TOTAL Total is the sum of each column separately

Job

Job Times

Formation Name				Date	Time	Time Zone
Formation Depth (MD)	Top	Bottom		Called Out	15 - Oct - 2010	13:00 MST
Form Type	BHST			On Location	15 - Oct - 2010	19:30 MST
Job depth MD	2730. ft	Job Depth TVD	2730. ft	Job Started	15 - Oct - 2010	23:34 MST
Water Depth		Wk Ht Above Floor	4. ft	Job Completed	16 - Oct - 2010	08:30 MST
Perforation Depth (MD)	From	To		Departed Loc	16 - Oct - 2010	09:30 MST

Well Data

Description	New / Used	Max pressure psig	Size in	ID in	Weight lbm/ft	Thread	Grade	Top MD ft	Bottom MD ft	Top TVD ft	Bottom TVD ft
Sales/Rental/3rd Party (HES)											

Description	Qty	Qty uom	Depth	Supplier
PLUG,CMTG, TOP, 9 5/8, HWE, 8.16 MIN/9.06 MA	1	EA		
R/A DENSOMETER W/CHART RECORDER, /JOB, ZI	1	JOB		
PORT. DATA ACQUIS. W/OPTICEM RT W/HES	1	EA		
ADC (AUTO DENSITY CTRL) SYS, /JOB, ZI	1	JOB		

Tools and Accessories

Type	Size	Qty	Make	Depth	Type	Size	Qty	Make	Depth	Type	Size	Qty	Make
Guide Shoe					Packer					Top Plug	9.625	1	HES
Float Shoe					Bridge Plug					Bottom Plug			
Float Collar					Retainer					SSR plug set			
Insert Float										Plug Container	9.625	1	HES
Stage Tool										Centralizers			

Miscellaneous Materials

Gelling Agt	Conc	Surfactant	Conc	Acid Type	Qty	Conc %
Treatment Fld	Conc	Inhibitor	Conc	Sand Type	Size	Qty

Fluid Data									
Stage/Plug #: 1									
Fluid #	Stage Type	Fluid Name	Qty	Qty uom	Mixing Density lbm/gal	Yield ft ³ /sk	Mix Fluid Gal/sk	Rate bbl/min	Total Mix Fluid Gal/sk
1	Water Spacer		20.00	bbl	8.33	.0	.0	.0	
2	SUPER FLUSH 101	SUPER FLUSH 101 - SBM (12199)	20.00	bbl	10.	.0	.0	.0	
3	Water Spacer		20.00	bbl	.	.0	.0	.0	
4	Lead Cement	VERSACEM (TM) SYSTEM (452010)	881.0	sacks	12.3	2.33	12.62		12.62
		12.62 Gal FRESH WATER							
5	Tail Cement	VERSACEM (TM) SYSTEM (452010)	135.0	sacks	12.8	2.07	10.67		10.67
		10.67 Gal FRESH WATER							
6	Displacement		205.00	bbl	.	.0	.0	.0	
7	Topout Cement	HALCEM (TM) SYSTEM (452986)		sacks	12.5	1.97	10.96		10.96
		10.96 Gal FRESH WATER							
Calculated Values		Pressures		Volumes					
Displacement	205	Shut In: Instant		Lost Returns	0	Cement Slurry	416	Pad	
Top Of Cement	SURFACE	5 Min		Cement Returns	175	Actual Displacement	205	Treatment	
Frac Gradient		15 Min		Spacers	60	Load and Breakdown		Total Job	681
Rates									
Circulating	RIG	Mixing	5	Displacement	5	Avg. Job	4		
Cement Left In Pipe	Amount	54.11 ft	Reason	Shoe Joint					
Frac Ring # 1 @	ID	Frac ring # 2 @	ID	Frac Ring # 3 @	ID	Frac Ring # 4 @	ID		
The Information Stated Herein Is Correct				Customer Representative Signature					

The Road to Excellence Starts with Safety

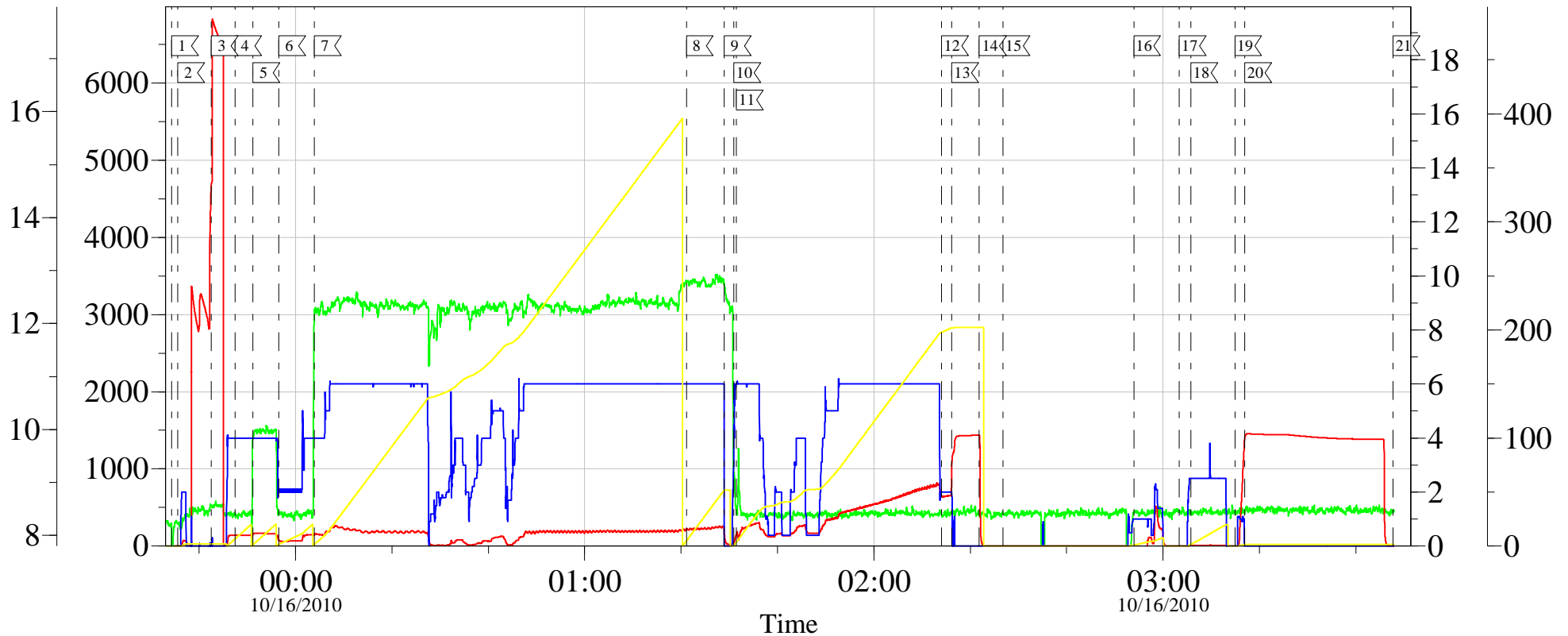
Sold To #: 344034	Ship To #: 2813366	Quote #:	Sales Order #: 7703111
Customer: OXY GRAND JUNCTION EBUSINESS		Customer Rep: DILLION, PAT	
Well Name: CC		Well #: 697-15-03A	API/UWI #: 05-045-18028
Field: GRAND VALLEY	City (SAP):	County/Parish: Garfield	State: Colorado
Legal Description:			
Lat: N 39.53 deg. OR N 39 deg. 31 min. 46.355 secs.		Long: W 108.213 deg. OR W -109 deg. 47 min. 12.977 secs.	
Contractor: H&P Drilling		Rig/Platform Name/Num: H&P 353	
Job Purpose: Cement Surface Casing			Ticket Amount:
Well Type: Development Well		Job Type: Cement Surface Casing	
Sales Person: DUNNING, DUSTIN		Srvc Supervisor: MAGERS, MICHAEL	MBU ID Emp #: 339439

Activity Description	Date/Time	Cht #	Rate bbl/min	Volume bbl		Pressure psig		Comments
				Stage	Total	Tubing	Casing	
Crew Leave Yard	10/15/2010 15:30							HES ALL PRESENT
Arrive At Loc	10/15/2010 19:30							RIG CREW RUNNING CASING/TRANSPORT ARRIVED ON LOCATION @ 1930
Assessment Of Location Safety Meeting	10/15/2010 19:45							LOCATION DRY
Pre-Rig Up Safety Meeting	10/15/2010 19:50							JSA ON RIGGING UP
Rig-Up Equipment	10/15/2010 20:00							TD 2730, TP 2709, SJ 54.11, MUD 9.4, CASING 9.635 36# J-55, OPEN HOLE 14.75" CONDUCTOR SET AT 95'
Safety Huddle	10/15/2010 23:20							RIG CREW AND HES ALL PRESENT
Start Job	10/15/2010 23:34							
Other	10/15/2010 23:35		2	2			74.0	FILL LINE
Pressure Test	10/15/2010 23:42		0.5	5			6800.0	PSI TEST OK
Pump Spacer 1	10/15/2010 23:47		4	20			137.0	FRESH WATER
Pump Spacer 2	10/15/2010 23:51		4	20			165.0	SUPER FLUSH
Pump Spacer 1	10/15/2010 23:56		4	20			140.0	FRESH WATER
Pump Lead Cement	10/16/2010 00:03		5	365.6			220.0	881 SKS 12.3 PPG 2.33 FT3/SKS 12.62 GAL/SKS
Pump Tail Cement	10/16/2010 01:21		5	49.8			248.0	135 SKS, 12.8 PPG, 2.07 FT3/SKS, 10.67 GAL/SKS

Activity Description	Date/Time	Cht #	Rate bbl/min	Volume bbl		Pressure psig		Comments
				Stage	Total	Tubing	Casing	
Shutdown	10/16/2010 01:28							
Drop Plug	10/16/2010 01:31							PLUG AWAY NO PROBLEMS
Pump Displacement	10/16/2010 01:32		6	205.2			790.0	FRESH WATER/GOT CEMENT TO SURFACE AT 30 BBL GONE/ GOT 175BBL TO SURFACE/RIG HAD TROUBLE KEEPING UP WITH THEIR PUMPS RATE FLUCTUATED THROUGHOUT DISPLACEMENT
Slow Rate	10/16/2010 02:14		2	195.2			670.0	
Bump Plug	10/16/2010 02:16		2	205.2			680.0	PLUG BUMPED
Check Floats	10/16/2010 02:21			205.2			1426.0	FLOATS HELD/GOT.75BBL BACK INTO DISPLACEMENT TANK
Shutdown	10/16/2010 02:26							RIG UP TO PARASITE LINE
Other	10/16/2010 02:53		2	10			500.0	PUMP SUGAR WATER INTO PARASITE STRING
Shutdown	10/16/2010 03:03							
Clean Lines	10/16/2010 03:05			20				CLEAN LINES IN CELLER
Shutdown	10/16/2010 03:14							RIG UP TO STAND PIPE
Pressure Test	10/16/2010 03:16						1440.0	PRESSURE TEST 9.625 CASING
End Job	10/16/2010 03:47							WAITING FOR TOP-OUT/TRANSPORT OFF LOCATION @ 0230
Start Job	10/16/2010 08:03							
Pump Spacer 1	10/16/2010 08:03		1.5	1			.0	FRESH WATER
Pump Cement	10/16/2010 08:04		1.5	9			30.0	TOPOUT CEMENT 25 SKS 12.5 PPG 1.97 FT3/SK 10.96 GAL/SK

Activity Description	Date/Time	Cht #	Rate bbl/min	Volume bbl		Pressure psig		Comments
				Stage	Total	Tubing	Casing	
Shutdown	10/16/2010 08:15							
Pump Cement	10/16/2010 08:27		1.5	2			.0	TOPOUT CEMENT 9 SKS 12.5 PPG 1.97 FT3/SK 10.96 GAL/SK
Pump Spacer 1	10/16/2010 08:29		1.5	1			.0	FRESH WATER
End Job	10/16/2010 08:30							THANKS FOR USING HES AND THE CREW OF MIKE MAGERS

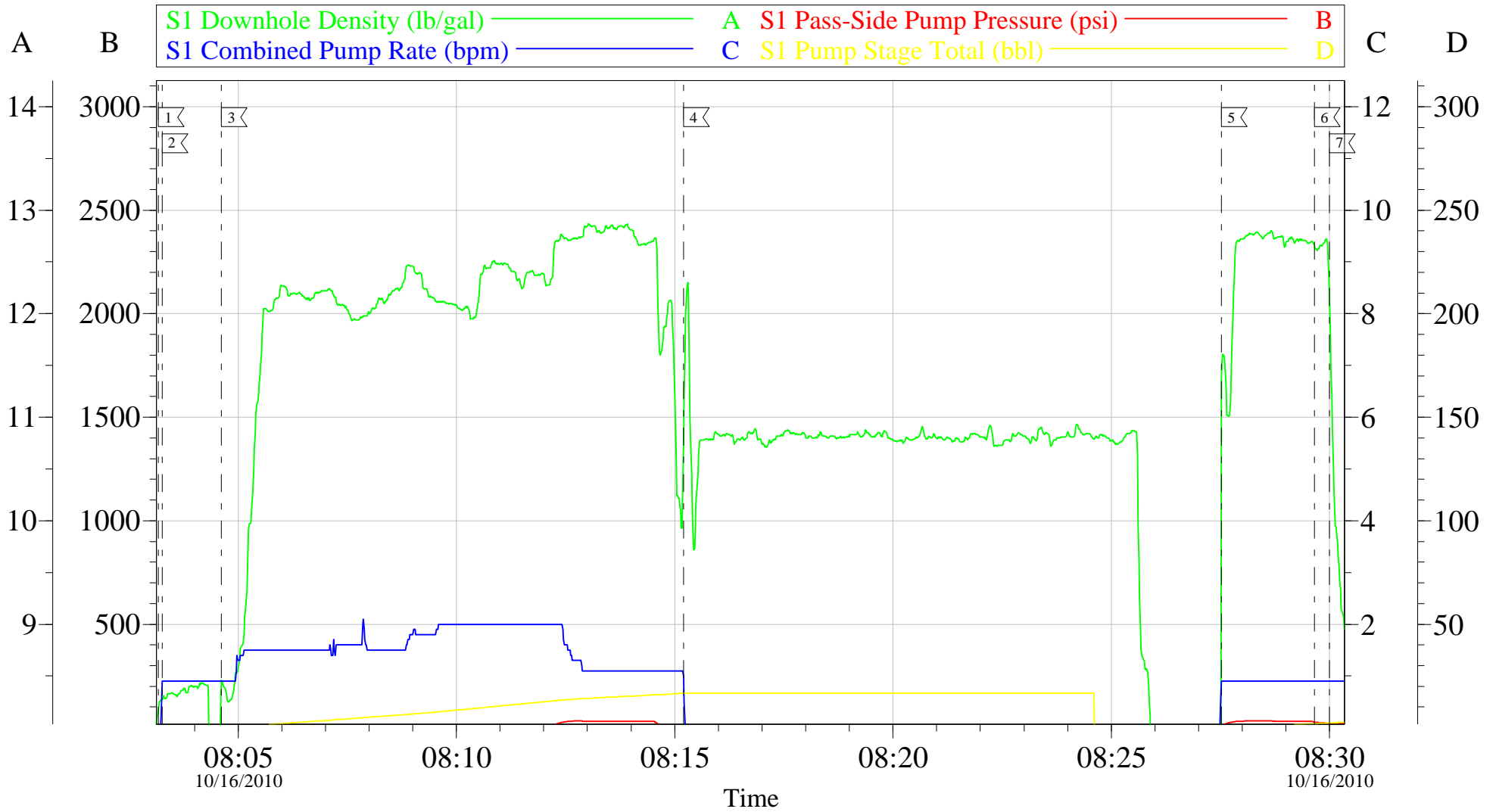
OXY H&P 353 SURFACE



Local Event Log					
1	START JOB	10/15/2010 23:34:17	2	FILL LINES	10/15/2010 23:35:33
3	PRESSURE TEST	10/15/2010 23:42:31	4	PUMP SPACER	10/15/2010 23:47:27
5	PUMP SUPERFLUSH	10/15/2010 23:51:10	6	PUMP SPACER	10/15/2010 23:56:31
7	PUMP LEAD CEMENT	10/16/2010 00:03:54	8	PUMP TAIL CEMENT	10/16/2010 01:21:06
9	SHUT DOWN	10/16/2010 01:28:58	10	DROP PLUG	10/16/2010 01:31:00
11	PUMP FRSH WTR DISPLACEMENT	10/16/2010 01:31:29	12	SLOW RATE	10/16/2010 02:14:05
13	BUMP PLUG	10/16/2010 02:16:08	14	CHECK FLOATS	10/16/2010 02:21:54
15	SHUT DOWN	10/16/2010 02:26:49	16	PUMP SUGAR WATER/PARASITE STRING	10/16/2010 02:53:55
17	SHUT DOWN	10/16/2010 03:03:21	18	CLEAN LINES IN CELLER	10/16/2010 03:05:49
19	SHUT DOWN	10/16/2010 03:14:53	20	PRESSURE TEST 9 5/8" CASING	10/16/2010 03:16:55
21	END JOB	10/16/2010 03:47:44			

Customer: OXY H&P 353	Job Date: 15-Oct-2010	Sales Order #: 7703111
Well Description: CC 697-15-03A	Job Type: SURFACE	ADC Used: YES
Company Rep: HENRY COMBS	Cement Supervisor: MIKE MAGERS	Elite #: 6 TODD DUBON

OXY H&P 353 TOPOUT



Local Event Log			
1 START JOB	08:03:10	2 PUMP 1 BBL WATER	08:03:15
		3 PUMP CEMENT	08:04:37
4 SHUT DOWN	08:15:12	5 PUMP CEMENT	08:27:32
6 PUMP 1 BBL WATER	08:29:39	7 END JOB	08:30:00

Customer: OXY H&P 353	Job Date: 16-Oct-2010	Sales Order #: 7703111
Well Description: CC 697-15-03A	Job Type: TOPOUT	ADC Used: NO
Company Rep: HENRY COMBS	Cement Supervisor: MIKE MAGERS	Elite #: 6 TODD DUBON